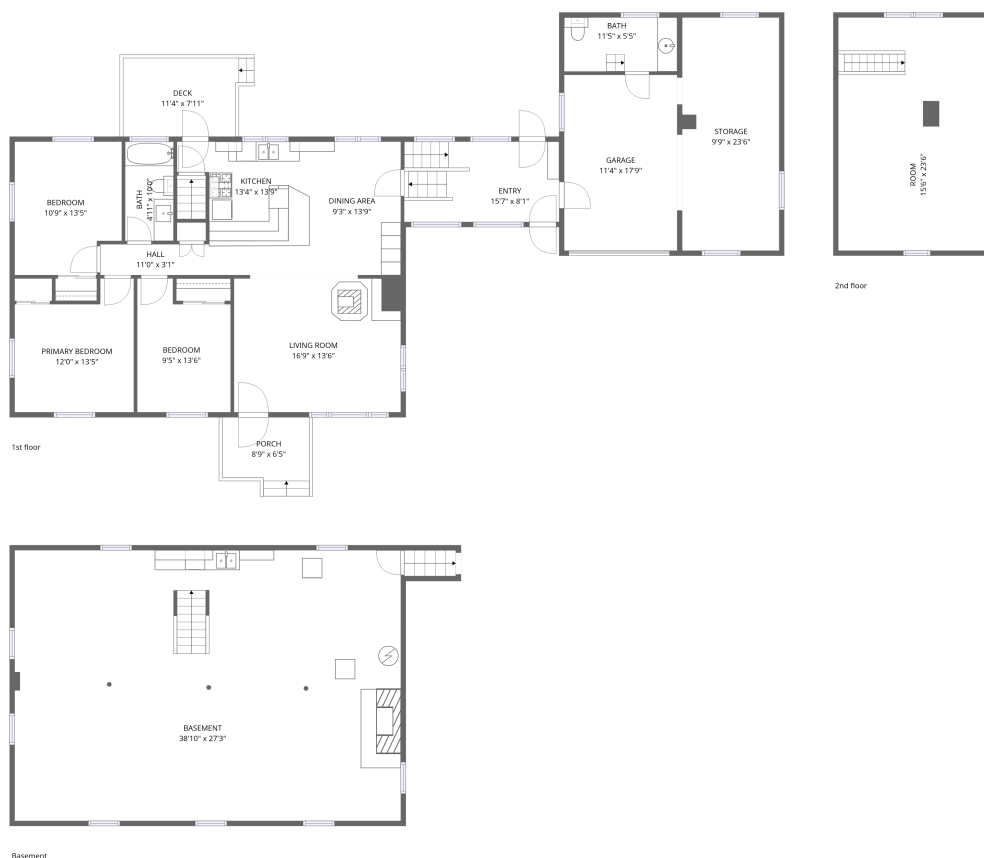


Home data report

64354 US-31, Lakeville, IN, US



Total Area: 1387 sq. ft

Basement: 14 sq. ft, 1st Floor: 1250 sq. ft, 2nd Floor: 123 sq. ft

Excluded: Basement 1059 sq. ft, Garage 201 sq. ft, Storage 229 sq. ft, Porch 62 sq. ft, Deck 94 sq. ft, Low ceiling 242 sq. ft, Walls: 254 sq. ft

Property summary


 **3** Floors

 **3** Bedrooms

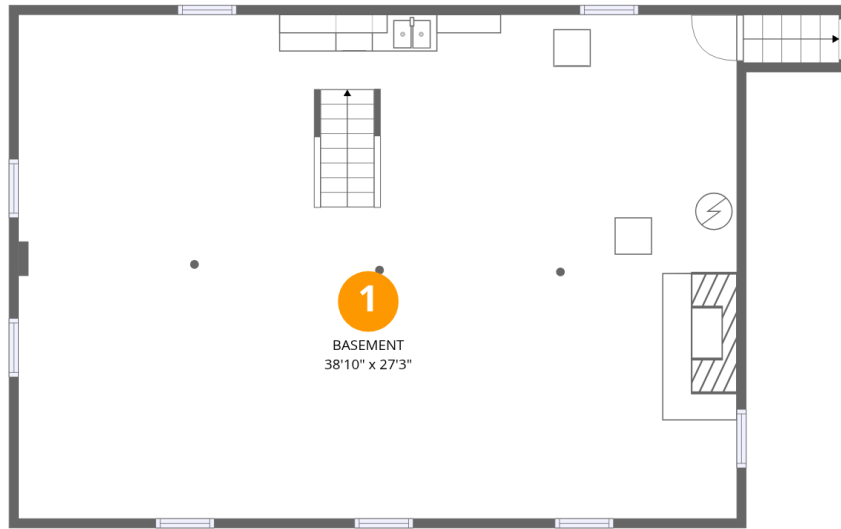
 **1** Bathrooms

Home data report

64354 US-31,Lakeville,IN,US

 **1**
Half baths

 **1**
Garages



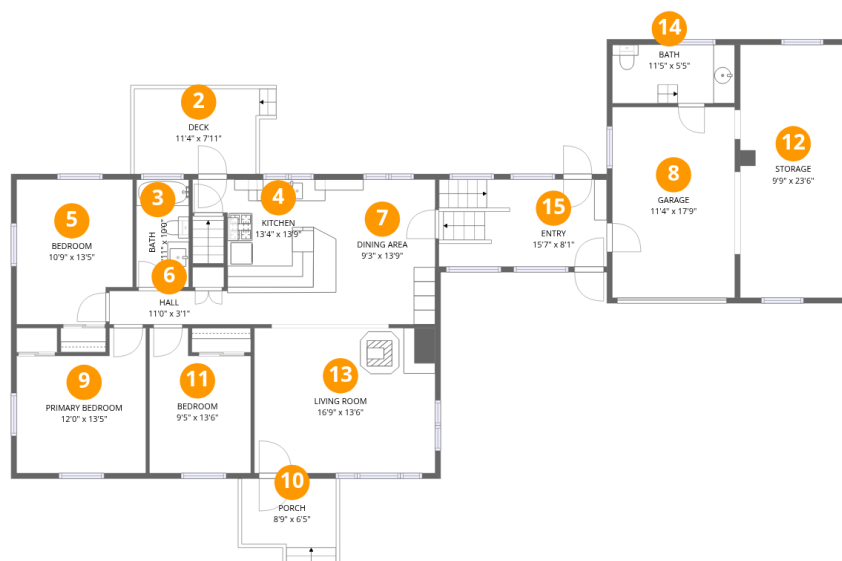
Room dimensions

Floor 1 Below grade

Total:14sqft

Excluded: 1059sqft

#		Dimensions	sqft	Counted as living area
1	Basement	38'10" x 27'3"	1059 sq. ft	No



Room dimensions

Floor 2

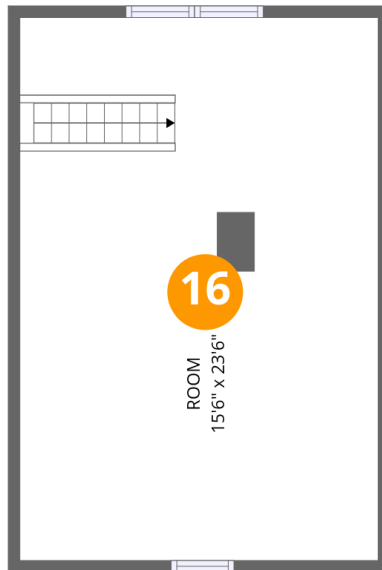
Total:1250sqft Excluded: 586sqft

#		Dimensions	sqft	Counted as living area
2	Deck	11'4" x 7'11"	89 sq. ft	No
3	Bath	4'11" x 10'0"	49 sq. ft	Yes
4	Kitchen	13'4" x 13'9"	184 sq. ft	Yes
5	Bedroom	10'9" x 13'5"	145 sq. ft	Yes
6	Hall	11'0" x 3'1"	34 sq. ft	Yes
7	Dining Area	9'3" x 13'9"	127 sq. ft	Yes
8	Garage	11'4" x 17'9"	201 sq. ft	No
9	Primary Bedroom	12'0" x 13'5"	161 sq. ft	Yes
10	Porch	8'9" x 6'5"	56 sq. ft	No
11	Bedroom	9'5" x 13'6"	127 sq. ft	Yes
12	Storage	9'9" x 23'6"	229 sq. ft	No

Home data report

64354 US-31,Lakeville,IN,US

#		Dimensions	sqft	Counted as living area
13	Living Room	16'9" x 13'6"	226 sq. ft	Yes
14	Bath	11'5" x 5'5"	62 sq. ft	Yes
15	Entry	15'7" x 8'1"	126 sq. ft	Yes



Room dimensions

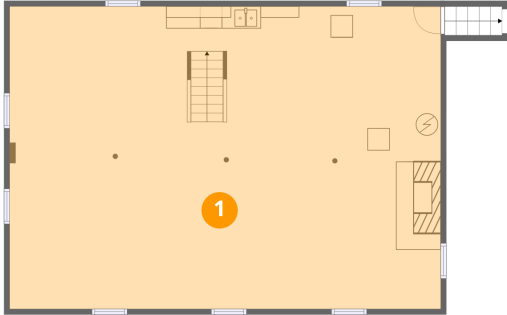
Floor 3

Total:123sqft

Excluded: 242sqft

#		Dimensions	sqft	Counted as living area
16	Room	15'6" x 23'6"	364 sq. ft	Yes

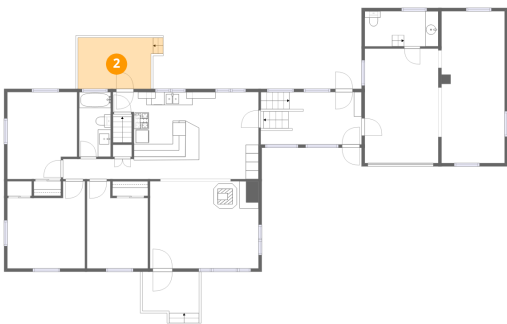
1 Floor 1 - Basement



Dimensions: 38'10" x 27'3"
Area: 1059 sq. ft
Counted as living area: No

Heated: Yes
Finished: No
Enclosed: Yes
Contiguous: Yes
Permitted: Yes
Wet space: No
Addition: No
Conversion: No

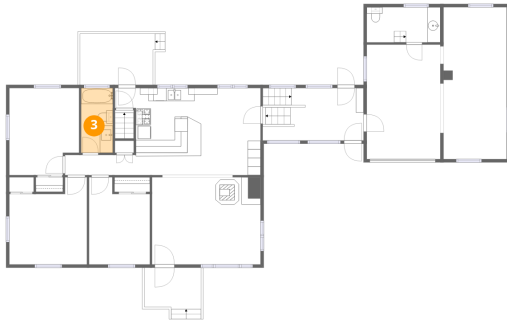
2 Floor 2 - Deck



Dimensions: 11'4" x 7'11"
Area: 89 sq. ft
Counted as living area: No

Heated: No
Finished: No
Enclosed: No
Contiguous: Yes
Permitted: Yes
Wet space: No
Addition: No
Conversion: No

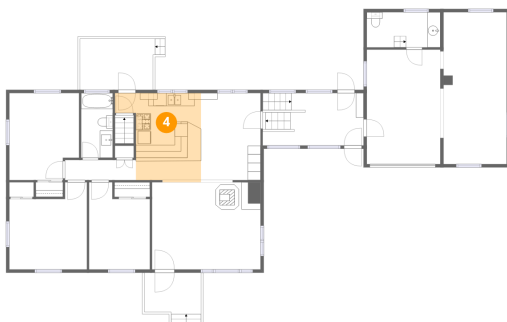
3 Floor 2 - Bath



Dimensions: 4'11" x 10'0"
Area: 49 sq. ft
Counted as living area: Yes

Heated: Yes
Finished: Yes
Enclosed: Yes
Contiguous: Yes
Permitted: Yes
Wet space: Yes
Addition: No
Conversion: No

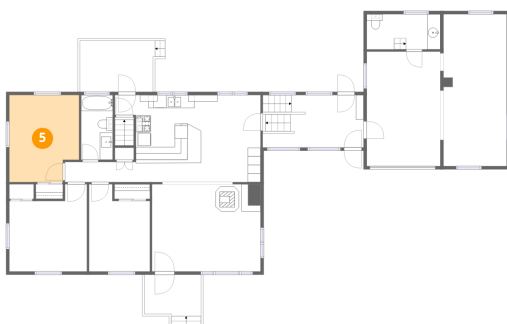
4 Floor 2 - Kitchen



Dimensions: 13'4" x 13'9"
Area: 184 sq. ft
Counted as living area: Yes

Heated: Yes
Finished: Yes
Enclosed: Yes
Contiguous: Yes
Permitted: Yes
Wet space: No
Addition: No
Conversion: No

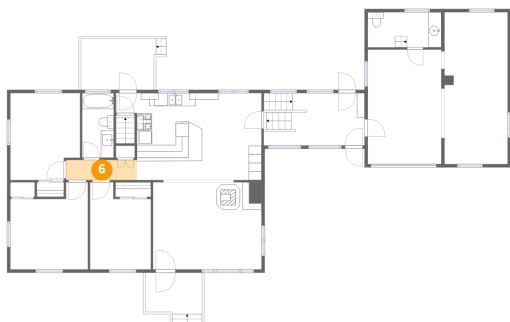
5 Floor 2 - Bedroom



Dimensions: 10'9" x 13'5"
Area: 145 sq. ft
Counted as living area: Yes

Heated: Yes
Finished: Yes
Enclosed: Yes
Contiguous: Yes
Permitted: Yes
Wet space: No
Addition: No
Conversion: No

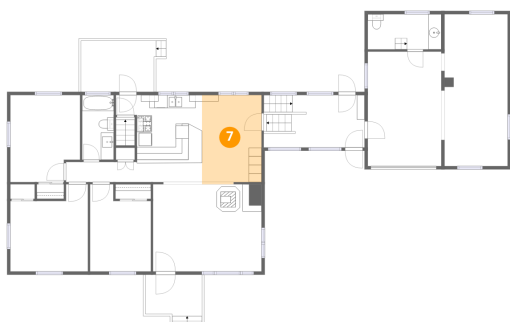
6 Floor 2 - Hall



Dimensions: 11'0" x 3'1"
Area: 34 sq. ft
Counted as living area: Yes

Heated: Yes
Finished: Yes
Enclosed: Yes
Contiguous: Yes
Permitted: Yes
Wet space: No
Addition: No
Conversion: No

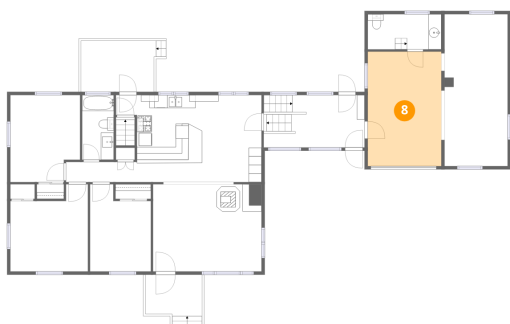
7 Floor 2 - Dining Area



Dimensions: 9'3" x 13'9"
Area: 127 sq. ft
Counted as living area: Yes

Heated: Yes
Finished: Yes
Enclosed: Yes
Contiguous: Yes
Permitted: Yes
Wet space: No
Addition: No
Conversion: No

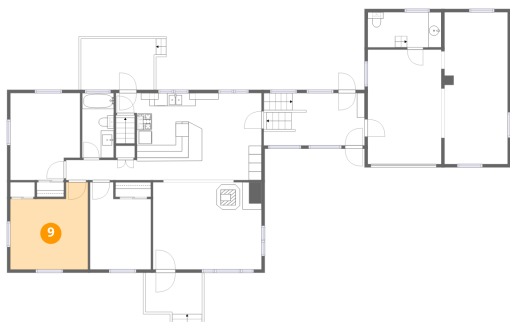
8 Floor 2 - Garage



Dimensions: 11'4" x 17'9"
Area: 201 sq. ft
Counted as living area: No

Heated: No
Finished: No
Enclosed: Yes
Contiguous: Yes
Permitted: Yes
Wet space: No
Addition: No
Conversion: No

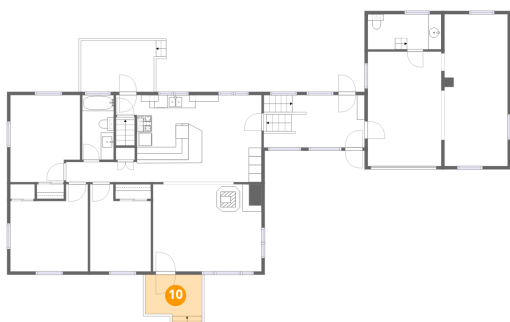
9 Floor 2 - Primary Bedroom



Dimensions: 12'0" x 13'5"
Area: 161 sq. ft
Counted as living area: Yes

Heated: Yes
Finished: Yes
Enclosed: Yes
Contiguous: Yes
Permitted: Yes
Wet space: No
Addition: No
Conversion: No

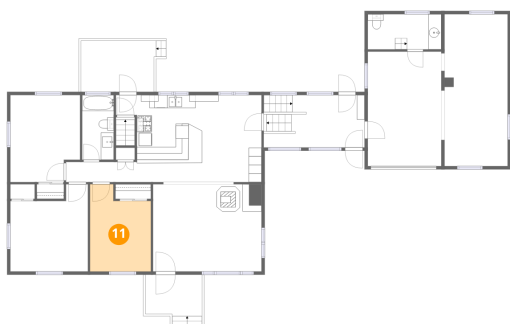
10 Floor 2 - Porch



Dimensions: 8'9" x 6'5"
Area: 56 sq. ft
Counted as living area: No

Heated: No
Finished: No
Enclosed: No
Contiguous: Yes
Permitted: Yes
Wet space: No
Addition: No
Conversion: No

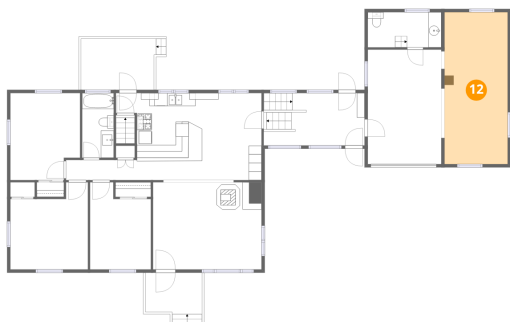
11 Floor 2 - Bedroom



Dimensions: 9'5" x 13'6"
Area: 127 sq. ft
Counted as living area: Yes

Heated: Yes
Finished: Yes
Enclosed: Yes
Contiguous: Yes
Permitted: Yes
Wet space: No
Addition: No
Conversion: No

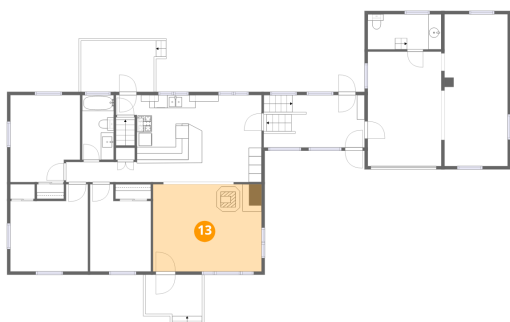
12 Floor 2 - Storage



Dimensions: 9'9" x 23'6"
Area: 229 sq. ft
Counted as living area: No

Heated: No
Finished: No
Enclosed: No
Contiguous: Yes
Permitted: Yes
Wet space: No
Addition: No
Conversion: No

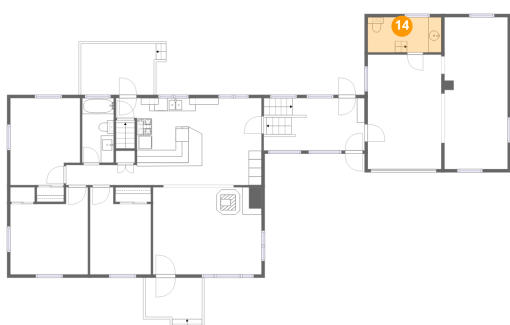
13 Floor 2 - Living Room



Dimensions: 16'9" x 13'6"
Area: 226 sq. ft
Counted as living area: Yes

Heated: Yes
Finished: Yes
Enclosed: Yes
Contiguous: Yes
Permitted: Yes
Wet space: No
Addition: No
Conversion: No

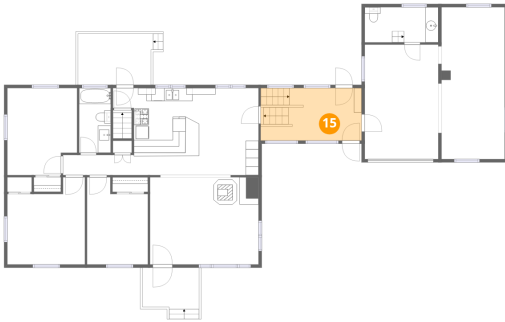
14 Floor 2 - Bath



Dimensions: 11'5" x 5'5"
Area: 62 sq. ft
Counted as living area: No

Heated: Yes
Finished: Yes
Enclosed: Yes
Contiguous: No
Permitted: Yes
Wet space: Yes
Addition: No
Conversion: No

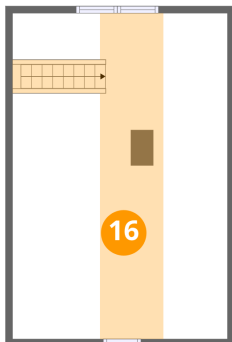
15 Floor 2 - Entry



Dimensions: 15'7" x 8'1"
Area: 126 sq. ft
Counted as living area: Yes

Heated: Yes
Finished: Yes
Enclosed: Yes
Contiguous: Yes
Permitted: Yes
Wet space: No
Addition: No
Conversion: No

16 Floor 3 - Room



Dimensions: 15'6" x 23'6"
Area: 364 sq. ft
Counted as living area: No

Heated: Yes
Finished: Yes
Enclosed: Yes
Contiguous: No
Permitted: Yes
Wet space: No
Addition: No
Conversion: No