

## Home data report

**169 Hillman Avenue, Glen Rock, Bergen County, New Jersey,  
United States, 07452**




**Total Area: 3218 sq. ft**

Basement: 362 sq. ft, 1st Floor: 605 sq. ft, 2nd Floor: 1246 sq. ft, 3rd Floor: 1005 sq. ft  
Excluded: Utility 52 sq. ft, Storage 396 sq. ft, Undefined 10 sq. ft, Garage 574 sq. ft, Patio  
742 sq. ft, Deck 62 sq. ft, Embedded window 12 sq. ft, Fireplace 14 sq. ft, Walls: 340 sq. ft

## Property summary

 **4** Floors

 **4** Bedrooms

 **2** Bathrooms

Home data report

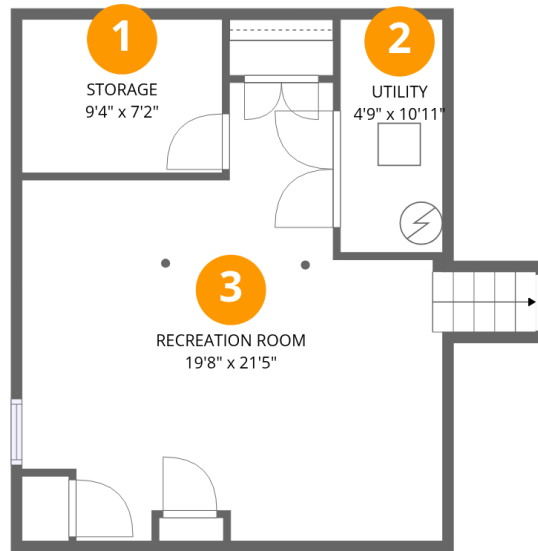
**169 Hillman Avenue, Glen Rock, Bergen County, New Jersey,  
United States, 07452**

 **1**  
Half baths

 **2**  
Garages

Home data report

169 Hillman Avenue, Glen Rock, Bergen County, New Jersey, United States, 07452



## Room dimensions

Floor 1 Below grade

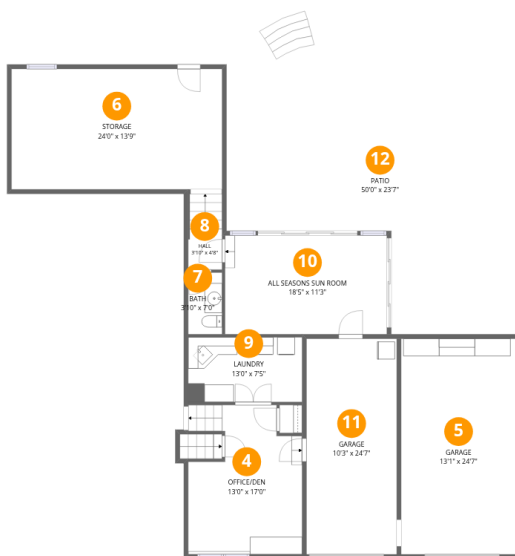
Total:362sqft

Excluded: 129sqft

#		Dimensions	sqft	Counted as living area
1	Storage	9'4" x 7'2"	67 sq. ft	No
2	Utility	4'9" x 10'11"	52 sq. ft	No
3	Recreation Room	19'8" x 21'5"	332 sq. ft	Yes

Home data report

169 Hillman Avenue, Glen Rock, Bergen County, New Jersey, United States, 07452



## Room dimensions

Floor 2

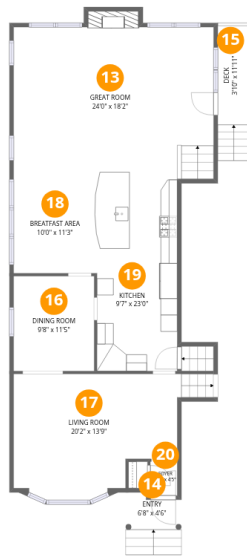
Total:605sqft

Excluded: 1645sqft

#		Dimensions	sqft	Counted as living area
4	Office/Den	13'0" x 17'0"	196 sq. ft	Yes
5	Garage	13'1" x 24'7"	321 sq. ft	No
6	Storage	24'0" x 13'9"	329 sq. ft	No
7	Bath	3'10" x 7'0"	27 sq. ft	Yes
8	Hall	3'10" x 4'8"	33 sq. ft	Yes
9	Laundry	13'0" x 7'5"	96 sq. ft	Yes
10	All Seasons Sun Room	18'5" x 11'3"	208 sq. ft	Yes
11	Garage	10'3" x 24'7"	253 sq. ft	No
12	Patio	50'0" x 23'7"	742 sq. ft	No

Home data report

169 Hillman Avenue, Glen Rock, Bergen County, New Jersey, United States, 07452



## Room dimensions

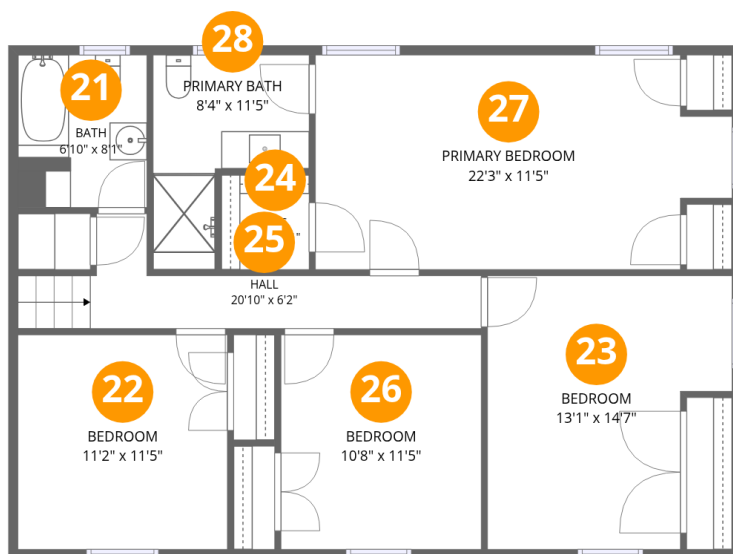
Floor 3

Total:1246sqft Excluded: 88sqft

#		Dimensions	sqft	Counted as living area
13	Great Room	24'0" x 18'2"	449 sq. ft	Yes
14	Entry	6'8" x 4'6"	46 sq. ft	Yes
15	Deck	3'10" x 11'11"	62 sq. ft	No
16	Dining Room	9'8" x 11'5"	110 sq. ft	Yes
17	Living Room	20'2" x 13'9"	260 sq. ft	Yes
18	Breatfast Area	10'0" x 11'3"	113 sq. ft	Yes
19	Kitchen	9'7" x 23'0"	222 sq. ft	Yes
20	Foyer	3'3" x 4'5"	14 sq. ft	Yes

## Home data report

169 Hillman Avenue, Glen Rock, Bergen County, New Jersey, United States, 07452



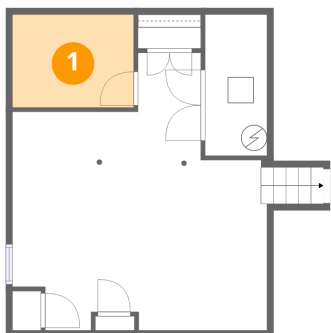
## Room dimensions

Floor 4

Total:1005sqft Excluded: 0sqft

#		Dimensions	sqft	Counted as living area
21	Bath	6'10" x 8'1"	54 sq. ft	Yes
22	Bedroom	11'2" x 11'5"	128 sq. ft	Yes
23	Bedroom	13'1" x 14'7"	167 sq. ft	Yes
24	W.I.C.	4'8" x 5'1"	24 sq. ft	Yes
25	Hall	20'10" x 6'2"	79 sq. ft	Yes
26	Bedroom	10'8" x 11'5"	122 sq. ft	Yes
27	Primary Bedroom	22'3" x 11'5"	235 sq. ft	Yes
28	Primary Bath	8'4" x 11'5"	68 sq. ft	Yes

## 1 Floor 1 - Storage



Dimensions: 9'4" x 7'2"  
Area: 67 sq. ft  
Counted as living area: No

Heated: No  
Finished: No  
Enclosed: No  
Contiguous: Yes  
Permitted: Yes  
Wet space: No  
Addition: No  
Conversion: No

## 2 Floor 1 - Utility



Dimensions: 4'9" x 10'11"  
Area: 52 sq. ft  
Counted as living area: No

Heated: Yes  
Finished: No  
Enclosed: Yes  
Contiguous: Yes  
Permitted: Yes  
Wet space: No  
Addition: No  
Conversion: No

169 Hillman Avenue, Glen Rock, Bergen County, New Jersey,  
United States, 07452

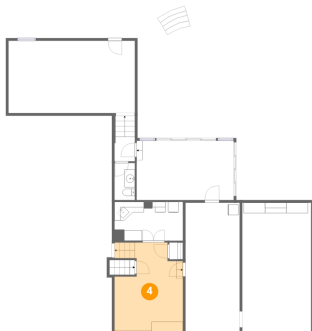
### 3 Floor 1 - Recreation Room



Dimensions: 19'8" x 21'5"  
Area: 332 sq. ft  
Counted as living area: Yes

Heated: Yes  
Finished: Yes  
Enclosed: Yes  
Contiguous: Yes  
Permitted: Yes  
Wet space: No  
Addition: No  
Conversion: No

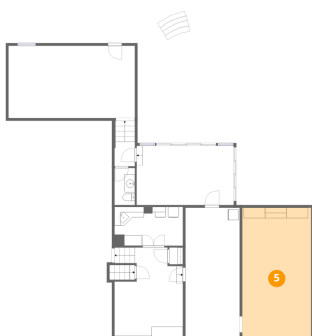
### 4 Floor 2 - Office/Den



Dimensions: 13'0" x 17'0"  
Area: 196 sq. ft  
Counted as living area: Yes

Heated: Yes  
Finished: Yes  
Enclosed: Yes  
Contiguous: Yes  
Permitted: Yes  
Wet space: No  
Addition: No  
Conversion: No

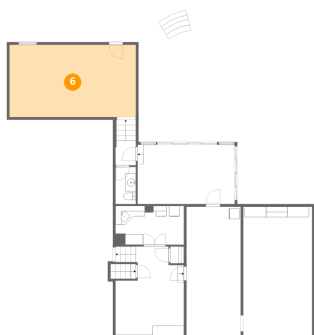
### 5 Floor 2 - Garage



Dimensions: 13'1" x 24'7"  
Area: 321 sq. ft  
Counted as living area: No

Heated: No  
Finished: No  
Enclosed: Yes  
Contiguous: Yes  
Permitted: Yes  
Wet space: No  
Addition: No  
Conversion: No

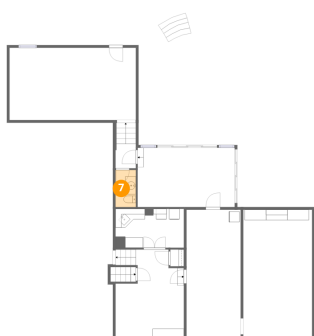
## 6 Floor 2 - Storage



Dimensions: 24'0" x 13'9"  
Area: 329 sq. ft  
Counted as living area: No

Heated: No  
Finished: No  
Enclosed: Yes  
Contiguous: Yes  
Permitted: Yes  
Wet space: No  
Addition: No  
Conversion: No

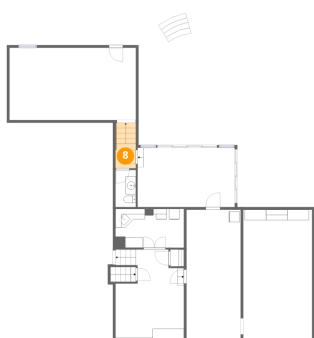
## 7 Floor 2 - Bath



Dimensions: 3'10" x 7'0"  
Area: 27 sq. ft  
Counted as living area: Yes

Heated: Yes  
Finished: Yes  
Enclosed: Yes  
Contiguous: Yes  
Permitted: Yes  
Wet space: Yes  
Addition: No  
Conversion: No

## 8 Floor 2 - Hall

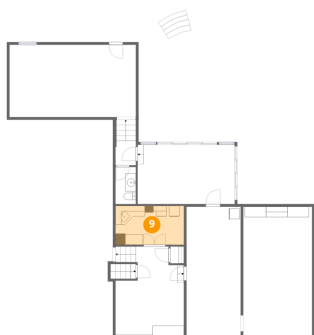


Dimensions: 3'10" x 4'8"  
Area: 33 sq. ft  
Counted as living area: Yes

Heated: Yes  
Finished: Yes  
Enclosed: Yes  
Contiguous: Yes  
Permitted: Yes  
Wet space: No  
Addition: No  
Conversion: No

169 Hillman Avenue, Glen Rock, Bergen County, New Jersey,  
United States, 07452

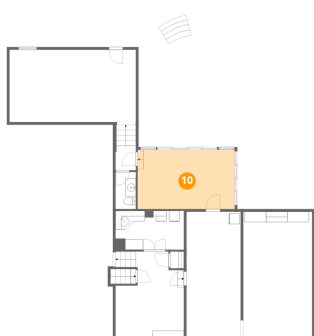
### 9 Floor 2 - Laundry



Dimensions: 13'0" x 7'5"  
Area: 96 sq. ft  
Counted as living area: Yes

Heated: Yes  
Finished: Yes  
Enclosed: Yes  
Contiguous: Yes  
Permitted: Yes  
Wet space: No  
Addition: No  
Conversion: No

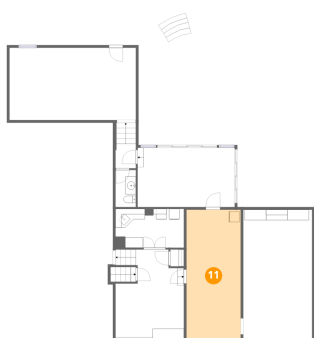
### 10 Floor 2 - All Seasons Sun Room



Dimensions: 18'5" x 11'3"  
Area: 208 sq. ft  
Counted as living area: Yes

Heated: Yes  
Finished: Yes  
Enclosed: Yes  
Contiguous: Yes  
Permitted: Yes  
Wet space: No  
Addition: No  
Conversion: No

### 11 Floor 2 - Garage

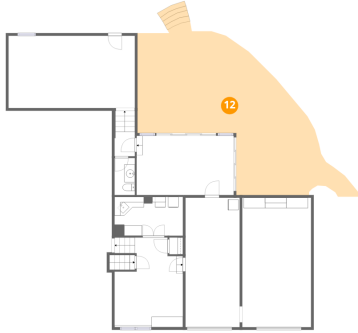


Dimensions: 10'3" x 24'7"  
Area: 253 sq. ft  
Counted as living area: No

Heated: No  
Finished: No  
Enclosed: Yes  
Contiguous: Yes  
Permitted: Yes  
Wet space: No  
Addition: No  
Conversion: No

169 Hillman Avenue, Glen Rock, Bergen County, New Jersey,  
United States, 07452

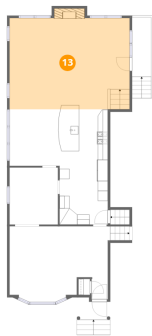
## 12 Floor 2 - Patio



Dimensions: 50'0" x 23'7"  
Area: 742 sq. ft  
Counted as living area: No

Heated: No  
Finished: No  
Enclosed: No  
Contiguous: Yes  
Permitted: Yes  
Wet space: No  
Addition: No  
Conversion: No

## 13 Floor 3 - Great Room



Dimensions: 24'0" x 18'2"  
Area: 449 sq. ft  
Counted as living area: Yes

Heated: Yes  
Finished: Yes  
Enclosed: Yes  
Contiguous: Yes  
Permitted: Yes  
Wet space: No  
Addition: No  
Conversion: No

## 14 Floor 3 - Entry



Dimensions: 6'8" x 4'6"  
Area: 46 sq. ft  
Counted as living area: Yes

Heated: Yes  
Finished: Yes  
Enclosed: Yes  
Contiguous: Yes  
Permitted: Yes  
Wet space: No  
Addition: No  
Conversion: No

**15** Floor 3 - Deck

---



Dimensions: 3'10" x 11'11"  
Area: 62 sq. ft  
Counted as living area: No

Heated: No  
Finished: No  
Enclosed: No  
Contiguous: Yes  
Permitted: Yes  
Wet space: No  
Addition: No  
Conversion: No

**16** Floor 3 - Dining Room

---

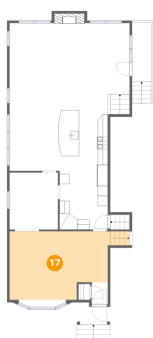


Dimensions: 9'8" x 11'5"  
Area: 110 sq. ft  
Counted as living area: Yes

Heated: Yes  
Finished: Yes  
Enclosed: Yes  
Contiguous: Yes  
Permitted: Yes  
Wet space: No  
Addition: No  
Conversion: No

**17** Floor 3 - Living Room

---



Dimensions: 20'2" x 13'9"  
Area: 260 sq. ft  
Counted as living area: Yes

Heated: Yes  
Finished: Yes  
Enclosed: Yes  
Contiguous: Yes  
Permitted: Yes  
Wet space: No  
Addition: No  
Conversion: No

**18** Floor 3 - Breakfast Area

---



Dimensions: 10'0" x 11'3"  
Area: 113 sq. ft  
Counted as living area: Yes

Heated: Yes  
Finished: Yes  
Enclosed: Yes  
Contiguous: Yes  
Permitted: Yes  
Wet space: No  
Addition: No  
Conversion: No

**19** Floor 3 - Kitchen

---



Dimensions: 9'7" x 23'0"  
Area: 222 sq. ft  
Counted as living area: Yes

Heated: Yes  
Finished: Yes  
Enclosed: Yes  
Contiguous: Yes  
Permitted: Yes  
Wet space: No  
Addition: No  
Conversion: No

**20** Floor 3 - Foyer

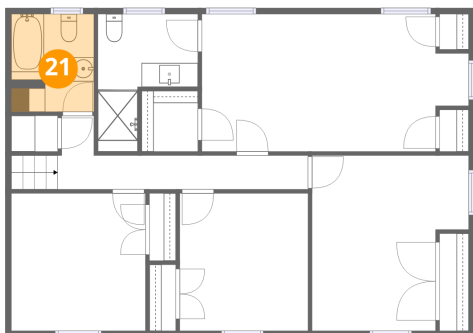
---



Dimensions: 3'3" x 4'5"  
Area: 14 sq. ft  
Counted as living area: Yes

Heated: Yes  
Finished: Yes  
Enclosed: Yes  
Contiguous: Yes  
Permitted: Yes  
Wet space: No  
Addition: No  
Conversion: No

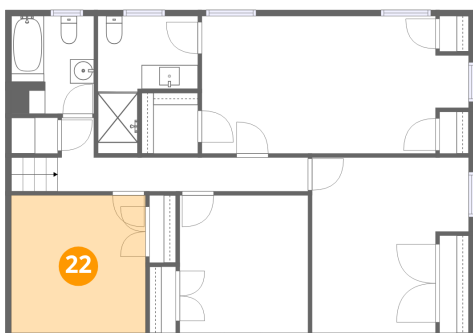
**21** Floor 4 - Bath



Dimensions: 6'10" x 8'1"  
Area: 54 sq. ft  
Counted as living area: Yes

Heated: Yes  
Finished: Yes  
Enclosed: Yes  
Contiguous: Yes  
Permitted: Yes  
Wet space: Yes  
Addition: No  
Conversion: No

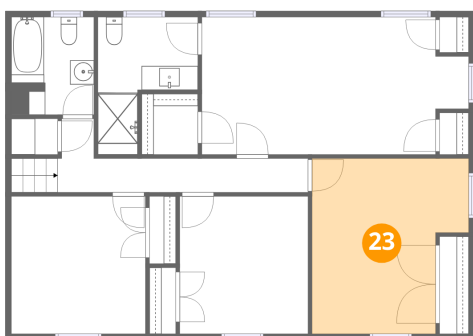
**22** Floor 4 - Bedroom



Dimensions: 11'2" x 11'5"  
Area: 128 sq. ft  
Counted as living area: Yes

Heated: Yes  
Finished: Yes  
Enclosed: Yes  
Contiguous: Yes  
Permitted: Yes  
Wet space: No  
Addition: No  
Conversion: No

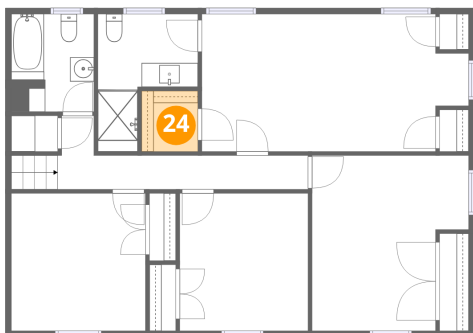
**23** Floor 4 - Bedroom



Dimensions: 13'1" x 14'7"  
Area: 167 sq. ft  
Counted as living area: Yes

Heated: Yes  
Finished: Yes  
Enclosed: Yes  
Contiguous: Yes  
Permitted: Yes  
Wet space: No  
Addition: No  
Conversion: No

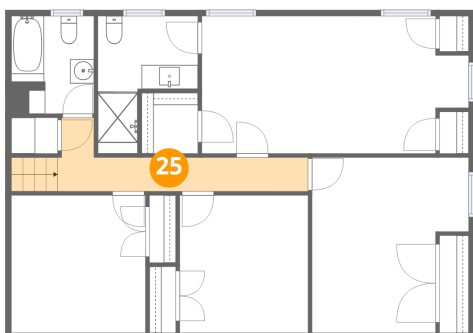
**24** Floor 4 - W.I.C.



Dimensions: 4'8" x 5'1"  
Area: 24 sq. ft  
Counted as living area: Yes

Heated: Yes  
Finished: Yes  
Enclosed: Yes  
Contiguous: Yes  
Permitted: Yes  
Wet space: No  
Addition: No  
Conversion: No

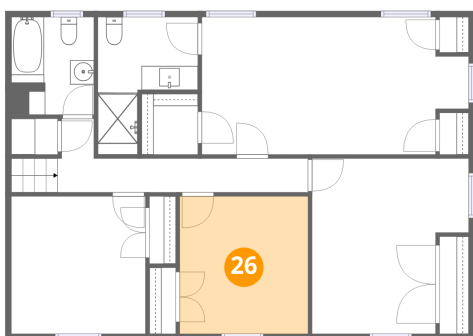
**25** Floor 4 - Hall



Dimensions: 20'10" x 6'2"  
Area: 79 sq. ft  
Counted as living area: Yes

Heated: Yes  
Finished: Yes  
Enclosed: Yes  
Contiguous: Yes  
Permitted: Yes  
Wet space: No  
Addition: No  
Conversion: No

**26** Floor 4 - Bedroom

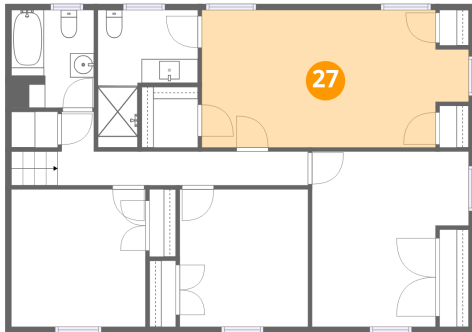


Dimensions: 10'8" x 11'5"  
Area: 122 sq. ft  
Counted as living area: Yes

Heated: Yes  
Finished: Yes  
Enclosed: Yes  
Contiguous: Yes  
Permitted: Yes  
Wet space: No  
Addition: No  
Conversion: No

169 Hillman Avenue, Glen Rock, Bergen County, New Jersey,  
United States, 07452

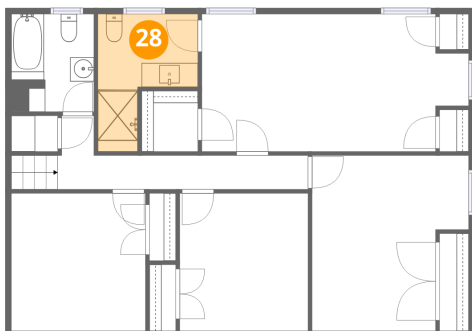
### 27 Floor 4 - Primary Bedroom



Dimensions: 22'3" x 11'5"  
Area: 235 sq. ft  
Counted as living area: Yes

Heated: Yes  
Finished: Yes  
Enclosed: Yes  
Contiguous: Yes  
Permitted: Yes  
Wet space: No  
Addition: No  
Conversion: No

### 28 Floor 4 - Primary Bath



Dimensions: 8'4" x 11'5"  
Area: 68 sq. ft  
Counted as living area: Yes

Heated: Yes  
Finished: Yes  
Enclosed: Yes  
Contiguous: Yes  
Permitted: Yes  
Wet space: Yes  
Addition: No  
Conversion: No