

Home report

1810 Windsor Avenue Southwest, Roanoke, Virginia 24015, United States



Total Area: 1689 sq. ft

Below Ground: 0 sq. ft, Floor 2: 1011 sq. ft, Floor 3: 678 sq. ft, Floor 4: 0 sq. ft  
Excluded: Basement 679 sq. ft, Porch 198 sq. ft, Patio 195 sq. ft, Fireplace 11 sq. ft, Low ceiling 327 sq. ft, Attic 333 sq. ft, Walls: 230 sq. ft

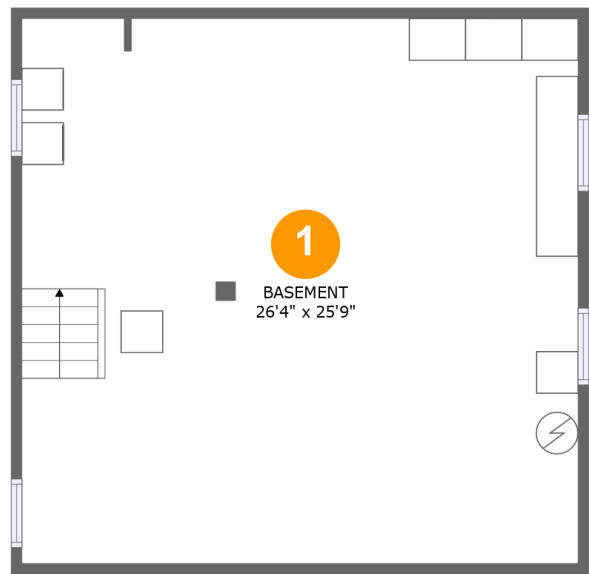
Property summary

 **4** Floors

 **4** Bedrooms

 **2** Bathrooms

1810 Windsor Avenue Southwest, Roanoke, Virginia 24015,  
United States



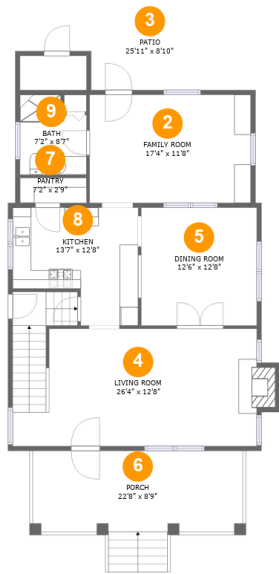
Room dimensions

Floor 1 Below ground Total:0sqft Excluded: 679sqft

#		Max Dimensions	sqft	Included
1	Basement	26'4" x 25'9"	679 sq. ft	No

Home report

1810 Windsor Avenue Southwest, Roanoke, Virginia 24015, United States



Room dimensions

Floor 2 Total:1011sqft   Excluded: 404sqft

#		Max Dimensions	sqft	Included
2	Family Room	17'4" x 11'8"	203 sq. ft	Yes
3	Patio	25'11" x 8'10"	195 sq. ft	No
4	Living Room	26'4" x 12'8"	368 sq. ft	Yes
5	Dining Room	12'6" x 12'8"	159 sq. ft	Yes
6	Porch	22'8" x 8'9"	198 sq. ft	No
7	Pantry	7'2" x 2'9"	20 sq. ft	Yes
8	Kitchen	13'7" x 12'8"	145 sq. ft	Yes
9	Bath	7'2" x 8'7"	56 sq. ft	Yes

1810 Windsor Avenue Southwest, Roanoke, Virginia 24015, United States

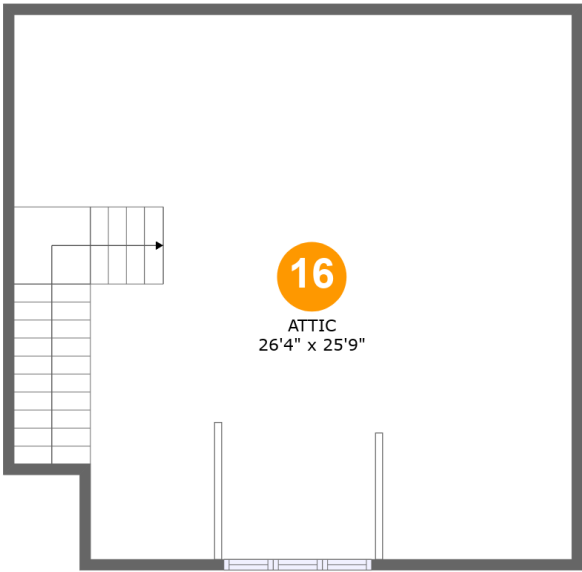


Room dimensions

Floor 3 Total:678sqft   Excluded: 0sqft

#		Max Dimensions	sqft	Included
10	Bedroom	12'3" x 12'8"	121 sq. ft	Yes
11	Bath	5'9" x 8'9"	50 sq. ft	Yes
12	Bedroom	9'7" x 8'9"	84 sq. ft	Yes
13	Primary Bedroom	13'9" x 12'8"	154 sq. ft	Yes
14	Hall	9'6" x 3'7"	87 sq. ft	Yes
15	Bedroom	10'4" x 12'9"	131 sq. ft	Yes

1810 Windsor Avenue Southwest, Roanoke, Virginia 24015,  
United States



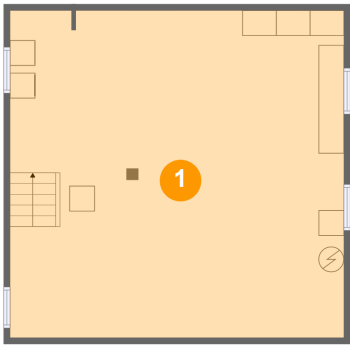
Room dimensions

Floor 4 Total:0sqft   Excluded: 660sqft

#		Max Dimensions	sqft	Included
16	Attic	26'4" x 25'9"	333 sq. ft	No

1810 Windsor Avenue Southwest, Roanoke, Virginia 24015,  
United States

1 Floor 1 - Basement



Max Dimensions: 26'4" x 25'9"  
Calculated Area: 679 sq. ft  
Included: No

Heated: Yes  
Finished: No  
Enclosed: Yes  
Contiguous: Yes  
Permitted: Yes  
Wet space: No  
Addition: No  
Conversion: No

2 Floor 2 - Family Room



Max Dimensions: 17'4" x 11'8"  
Calculated Area: 203 sq. ft  
Included: Yes

Heated: Yes  
Finished: Yes  
Enclosed: Yes  
Contiguous: Yes  
Permitted: Yes  
Wet space: No  
Addition: No  
Conversion: No

1810 Windsor Avenue Southwest, Roanoke, Virginia 24015,  
United States

3 Floor 2 - Patio



Max Dimensions: 25'11" x 8'10"  
Calculated Area: 195 sq. ft  
Included: No

Heated: No  
Finished: Yes  
Enclosed: No  
Contiguous: Yes  
Permitted: Yes  
Wet space: No  
Addition: No  
Conversion: No

4 Floor 2 - Living Room



Max Dimensions: 26'4" x 12'8"  
Calculated Area: 368 sq. ft  
Included: Yes

Heated: Yes  
Finished: Yes  
Enclosed: Yes  
Contiguous: Yes  
Permitted: Yes  
Wet space: No  
Addition: No  
Conversion: No

5 Floor 2 - Dining Room



Max Dimensions: 12'6" x 12'8"  
Calculated Area: 159 sq. ft  
Included: Yes

Heated: Yes  
Finished: Yes  
Enclosed: Yes  
Contiguous: Yes  
Permitted: Yes  
Wet space: No  
Addition: No  
Conversion: No

1810 Windsor Avenue Southwest, Roanoke, Virginia 24015,  
United States

6 Floor 2 - Porch



Max Dimensions: 22'8" x 8'9"  
Calculated Area: 198 sq. ft  
Included: No

Heated: No  
Finished: Yes  
Enclosed: No  
Contiguous: Yes  
Permitted: Yes  
Wet space: No  
Addition: No  
Conversion: No

7 Floor 2 - Pantry



Max Dimensions: 7'2" x 2'9"  
Calculated Area: 20 sq. ft  
Included: Yes

Heated: Yes  
Finished: Yes  
Enclosed: Yes  
Contiguous: Yes  
Permitted: Yes  
Wet space: No  
Addition: No  
Conversion: No

8 Floor 2 - Kitchen



Max Dimensions: 13'7" x 12'8"  
Calculated Area: 145 sq. ft  
Included: Yes

Heated: Yes  
Finished: Yes  
Enclosed: Yes  
Contiguous: Yes  
Permitted: Yes  
Wet space: No  
Addition: No  
Conversion: No



1810 Windsor Avenue Southwest, Roanoke, Virginia 24015,  
United States

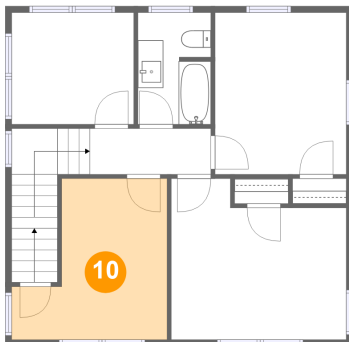
## 9 Floor 2 - Bath



Max Dimensions: 7'2" x 8'7"  
Calculated Area: 56 sq. ft  
Included: Yes

Heated: Yes  
Finished: Yes  
Enclosed: Yes  
Contiguous: Yes  
Permitted: Yes  
Wet space: Yes  
Addition: No  
Conversion: No

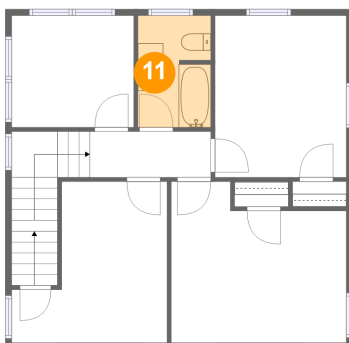
## 10 Floor 3 - Bedroom



Max Dimensions: 12'3" x 12'8"  
Calculated Area: 121 sq. ft  
Included: Yes

Heated: Yes  
Finished: Yes  
Enclosed: Yes  
Contiguous: Yes  
Permitted: Yes  
Wet space: No  
Addition: No  
Conversion: No

## 11 Floor 3 - Bath

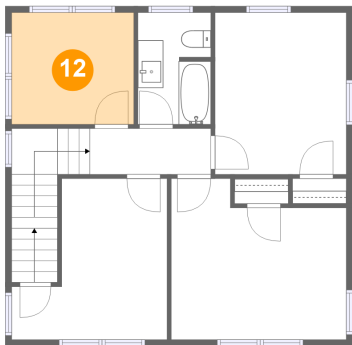


Max Dimensions: 5'9" x 8'9"  
Calculated Area: 50 sq. ft  
Included: Yes

Heated: Yes  
Finished: Yes  
Enclosed: Yes  
Contiguous: Yes  
Permitted: Yes  
Wet space: Yes  
Addition: No  
Conversion: No

1810 Windsor Avenue Southwest, Roanoke, Virginia 24015,  
United States

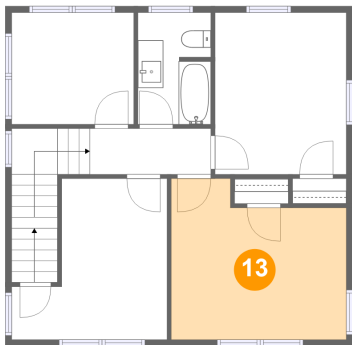
12 Floor 3 - Bedroom



Max Dimensions: 9'7" x 8'9"  
Calculated Area: 84 sq. ft  
Included: Yes

Heated: Yes  
Finished: Yes  
Enclosed: Yes  
Contiguous: Yes  
Permitted: Yes  
Wet space: No  
Addition: No  
Conversion: No

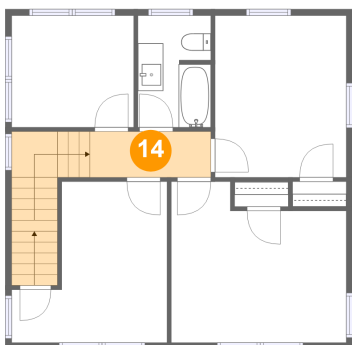
13 Floor 3 - Primary Bedroom



Max Dimensions: 13'9" x 12'8"  
Calculated Area: 154 sq. ft  
Included: Yes

Heated: Yes  
Finished: Yes  
Enclosed: Yes  
Contiguous: Yes  
Permitted: Yes  
Wet space: No  
Addition: No  
Conversion: No

14 Floor 3 - Hall

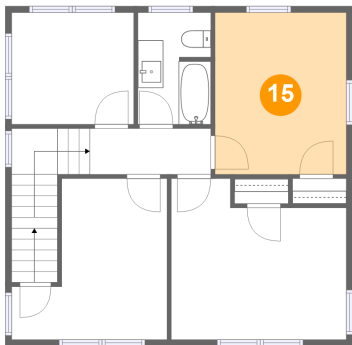


Max Dimensions: 9'6" x 3'7"  
Calculated Area: 87 sq. ft  
Included: Yes

Heated: Yes  
Finished: Yes  
Enclosed: Yes  
Contiguous: Yes  
Permitted: Yes  
Wet space: No  
Addition: No  
Conversion: No

1810 Windsor Avenue Southwest, Roanoke, Virginia 24015,  
United States

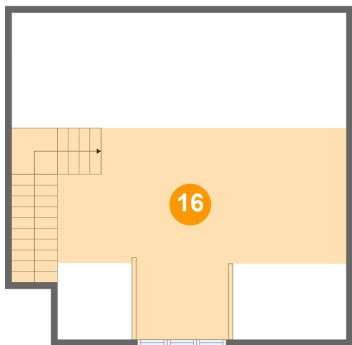
15 Floor 3 - Bedroom



Max Dimensions: 10'4" x 12'9"  
Calculated Area: 131 sq. ft  
Included: Yes

Heated: Yes  
Finished: Yes  
Enclosed: Yes  
Contiguous: Yes  
Permitted: Yes  
Wet space: No  
Addition: No  
Conversion: No

16 Floor 4 - Attic



Max Dimensions: 26'4" x 25'9"  
Calculated Area: 333 sq. ft  
Included: No

Heated: No  
Finished: No  
Enclosed: Yes  
Contiguous: Yes  
Permitted: Yes  
Wet space: No  
Addition: No  
Conversion: No