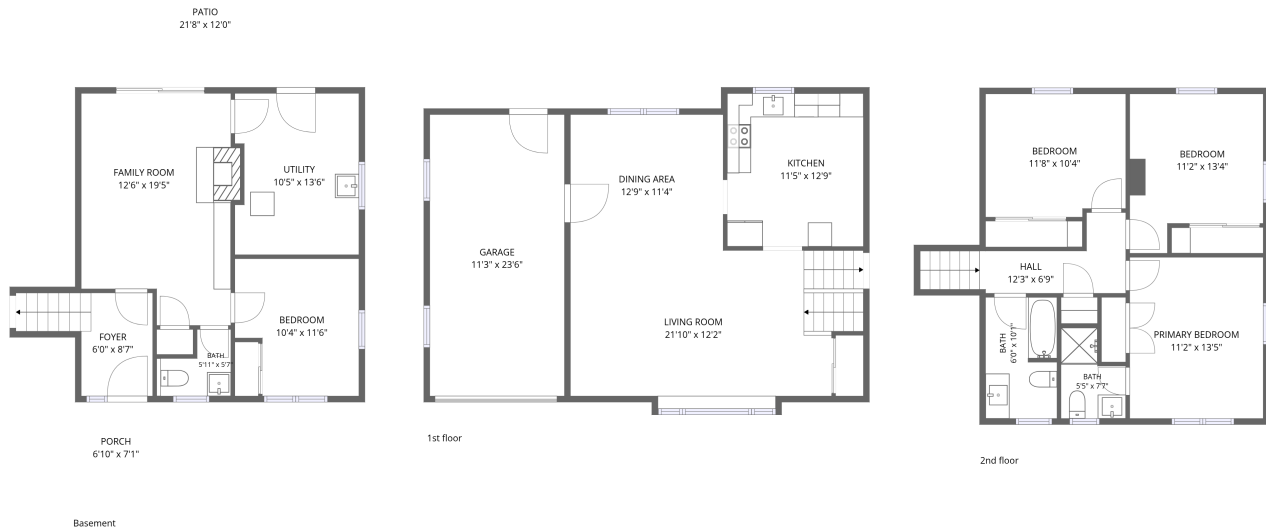


Home data report

1121 Welch Road Southwest, Raleigh Court, Roanoke, Roanoke city, Virginia, United States, 24015




Total Area: 1722 sq. ft

Basement: 468 sq. ft, 1st Floor: 607 sq. ft, 2nd Floor: 647 sq. ft

Excluded: Utility 136 sq. ft, Porch 48 sq. ft, Patio 261 sq. ft, Garage 264 sq. ft, Walls: 186 sq. ft

Property summary

 **3** Floors

 **4** Bedrooms

 **2** Bathrooms

Home data report

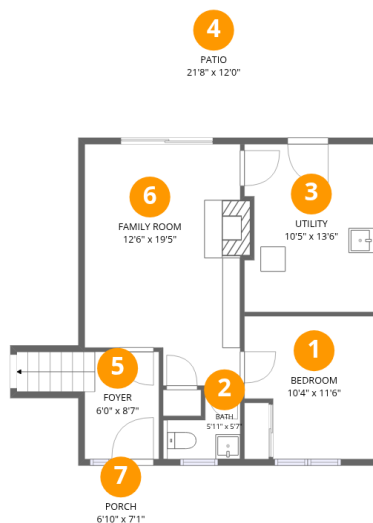
1121 Welch Road Southwest, Raleigh Court, Roanoke, Roanoke city, Virginia, United States, 24015

 **1**
Half baths

 **1**
Garages

Home data report

1121 Welch Road Southwest, Raleigh Court, Roanoke, Roanoke city, Virginia, United States, 24015



Room dimensions

Floor 1 Below grade

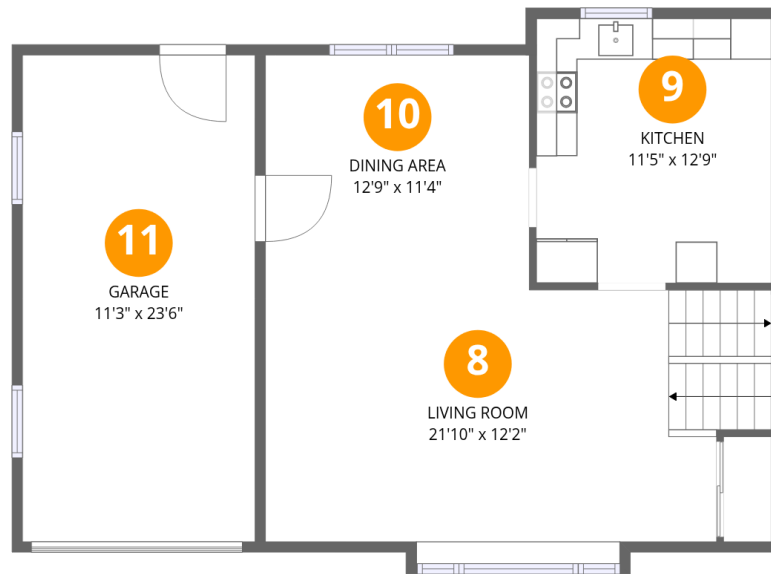
Total:468sqft

Excluded: 445sqft

#		Dimensions	sqft	Counted as living area
1	Bedroom	10'4" x 11'6"	108 sq. ft	Yes
2	Bath	5'11" x 5'7"	26 sq. ft	Yes
3	Utility	10'5" x 13'6"	136 sq. ft	No
4	Patio	21'8" x 12'0"	261 sq. ft	No
5	Foyer	6'0" x 8'7"	69 sq. ft	Yes
6	Family Room	12'6" x 19'5"	226 sq. ft	Yes
7	Porch	6'10" x 7'1"	48 sq. ft	No

Home data report

1121 Welch Road Southwest, Raleigh Court, Roanoke, Roanoke city, Virginia, United States, 24015



Room dimensions

Floor 2

Total:607sqft

Excluded: 264sqft

#		Dimensions	sqft	Counted as living area
8	Living Room	21'10" x 12'2"	294 sq. ft	Yes
9	Kitchen	11'5" x 12'9"	145 sq. ft	Yes
10	Dining Area	12'9" x 11'4"	145 sq. ft	Yes
11	Garage	11'3" x 23'6"	264 sq. ft	No

Home data report

1121 Welch Road Southwest, Raleigh Court, Roanoke, Roanoke city, Virginia, United States, 24015



Room dimensions

Floor 3

Total:647sqft

Excluded: 0sqft

#		Dimensions	sqft	Counted as living area
12	Bath	6'0" x 10'1"	60 sq. ft	Yes
13	Primary Bedroom	11'2" x 13'5"	150 sq. ft	Yes
14	Bedroom	11'2" x 13'4"	128 sq. ft	Yes
15	Hall	12'3" x 6'9"	70 sq. ft	Yes
16	Bedroom	11'8" x 10'4"	118 sq. ft	Yes
17	Bath	5'5" x 7'7"	33 sq. ft	Yes

1121 Welch Road Southwest, Raleigh Court, Roanoke, Roanoke city, Virginia, United States, 24015

1 Floor 1 - Bedroom



Dimensions: 10'4" x 11'6"
Area: 108 sq. ft
Counted as living area: Yes

Heated: Yes
Finished: Yes
Enclosed: Yes
Contiguous: Yes
Permitted: Yes
Wet space: No
Addition: No
Conversion: No

2 Floor 1 - Bath

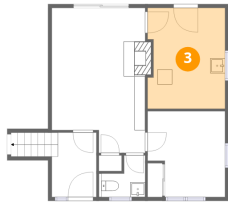


Dimensions: 5'11" x 5'7"
Area: 26 sq. ft
Counted as living area: Yes

Heated: Yes
Finished: Yes
Enclosed: Yes
Contiguous: Yes
Permitted: Yes
Wet space: Yes
Addition: No
Conversion: No

1121 Welch Road Southwest, Raleigh Court, Roanoke, Roanoke city, Virginia, United States, 24015

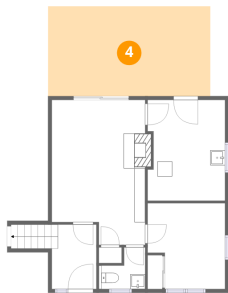
3 Floor 1 - Utility



Dimensions: 10'5" x 13'6"
Area: 136 sq. ft
Counted as living area: No

Heated: Yes
Finished: No
Enclosed: Yes
Contiguous: Yes
Permitted: Yes
Wet space: No
Addition: No
Conversion: No

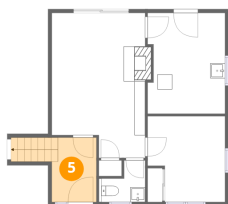
4 Floor 1 - Patio



Dimensions: 21'8" x 12'0"
Area: 261 sq. ft
Counted as living area: No

Heated: No
Finished: No
Enclosed: No
Contiguous: Yes
Permitted: Yes
Wet space: No
Addition: No
Conversion: No

5 Floor 1 - Foyer



Dimensions: 6'0" x 8'7"
Area: 69 sq. ft
Counted as living area: Yes

Heated: Yes
Finished: Yes
Enclosed: Yes
Contiguous: Yes
Permitted: Yes
Wet space: No
Addition: No
Conversion: No

1121 Welch Road Southwest, Raleigh Court, Roanoke, Roanoke city, Virginia, United States, 24015

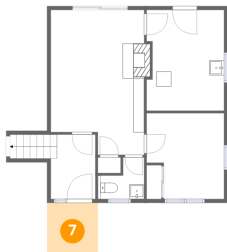
6 Floor 1 - Family Room



Dimensions: 12'6" x 19'5"
Area: 226 sq. ft
Counted as living area: Yes

Heated: Yes
Finished: Yes
Enclosed: Yes
Contiguous: Yes
Permitted: Yes
Wet space: No
Addition: No
Conversion: No

7 Floor 1 - Porch



Dimensions: 6'10" x 7'1"
Area: 48 sq. ft
Counted as living area: No

Heated: No
Finished: No
Enclosed: No
Contiguous: Yes
Permitted: Yes
Wet space: No
Addition: No
Conversion: No

8 Floor 2 - Living Room

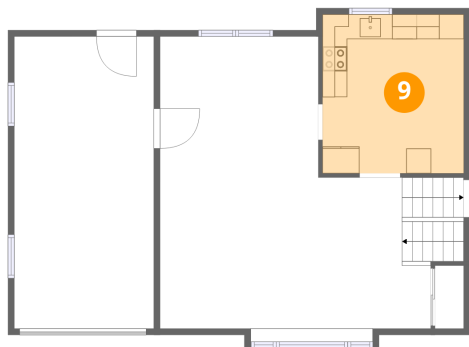


Dimensions: 21'10" x 12'2"
Area: 294 sq. ft
Counted as living area: Yes

Heated: Yes
Finished: Yes
Enclosed: Yes
Contiguous: Yes
Permitted: Yes
Wet space: No
Addition: No
Conversion: No

1121 Welch Road Southwest, Raleigh Court, Roanoke, Roanoke city, Virginia, United States, 24015

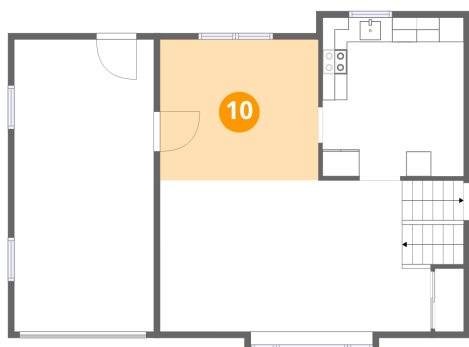
9 Floor 2 - Kitchen



Dimensions: 11'5" x 12'9"
Area: 145 sq. ft
Counted as living area: Yes

Heated: Yes
Finished: Yes
Enclosed: Yes
Contiguous: Yes
Permitted: Yes
Wet space: No
Addition: No
Conversion: No

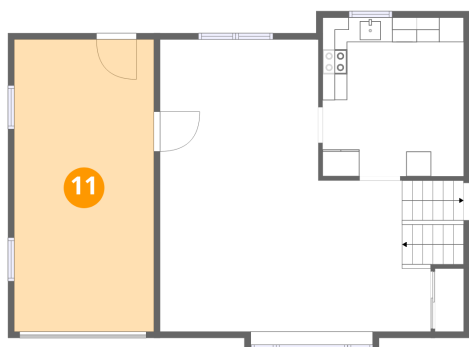
10 Floor 2 - Dining Area



Dimensions: 12'9" x 11'4"
Area: 145 sq. ft
Counted as living area: Yes

Heated: Yes
Finished: Yes
Enclosed: Yes
Contiguous: Yes
Permitted: Yes
Wet space: No
Addition: No
Conversion: No

11 Floor 2 - Garage

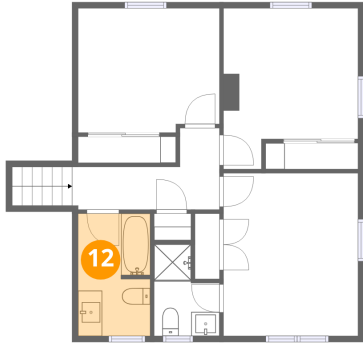


Dimensions: 11'3" x 23'6"
Area: 264 sq. ft
Counted as living area: No

Heated: No
Finished: No
Enclosed: Yes
Contiguous: Yes
Permitted: Yes
Wet space: No
Addition: No
Conversion: No

1121 Welch Road Southwest, Raleigh Court, Roanoke, Roanoke city, Virginia, United States, 24015

12 Floor 3 - Bath



Dimensions: 6'0" x 10'1"
Area: 60 sq. ft
Counted as living area: Yes

Heated: Yes
Finished: Yes
Enclosed: Yes
Contiguous: Yes
Permitted: Yes
Wet space: Yes
Addition: No
Conversion: No

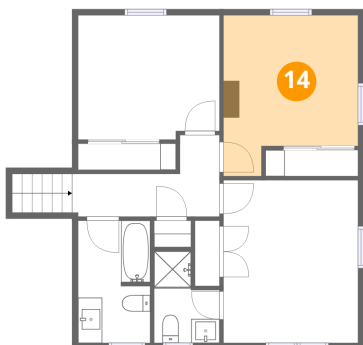
13 Floor 3 - Primary Bedroom



Dimensions: 11'2" x 13'5"
Area: 150 sq. ft
Counted as living area: Yes

Heated: Yes
Finished: Yes
Enclosed: Yes
Contiguous: Yes
Permitted: Yes
Wet space: No
Addition: No
Conversion: No

14 Floor 3 - Bedroom

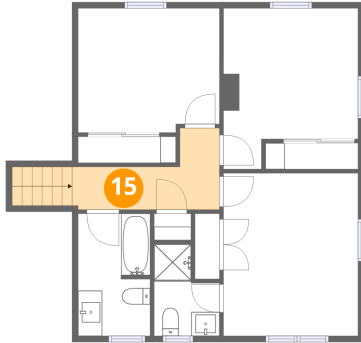


Dimensions: 11'2" x 13'4"
Area: 128 sq. ft
Counted as living area: Yes

Heated: Yes
Finished: Yes
Enclosed: Yes
Contiguous: Yes
Permitted: Yes
Wet space: No
Addition: No
Conversion: No

1121 Welch Road Southwest, Raleigh Court, Roanoke, Roanoke city, Virginia, United States, 24015

15 Floor 3 - Hall



Dimensions: 12'3" x 6'9"
Area: 70 sq. ft
Counted as living area: Yes

Heated: Yes
Finished: Yes
Enclosed: Yes
Contiguous: Yes
Permitted: Yes
Wet space: No
Addition: No
Conversion: No

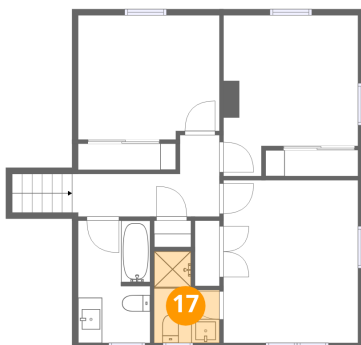
16 Floor 3 - Bedroom



Dimensions: 11'8" x 10'4"
Area: 118 sq. ft
Counted as living area: Yes

Heated: Yes
Finished: Yes
Enclosed: Yes
Contiguous: Yes
Permitted: Yes
Wet space: No
Addition: No
Conversion: No

17 Floor 3 - Bath



Dimensions: 5'5" x 7'7"
Area: 33 sq. ft
Counted as living area: Yes

Heated: Yes
Finished: Yes
Enclosed: Yes
Contiguous: Yes
Permitted: Yes
Wet space: Yes
Addition: No
Conversion: No