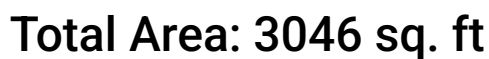


**2415 Bluestem Willow Drive, Loveland, Larimer County,
Colorado, United States, 80538**



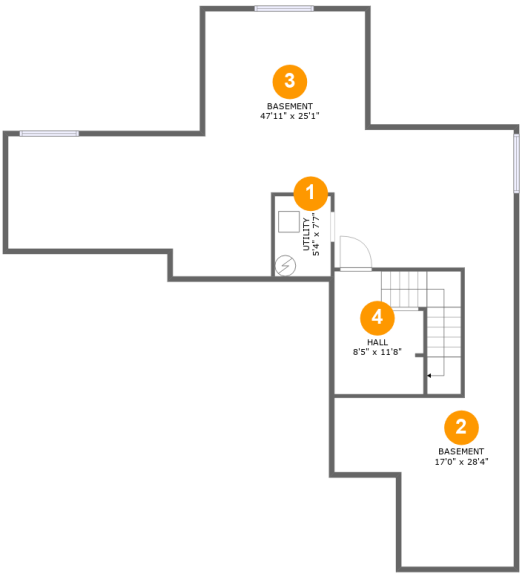
Excluded: Utility 47 sq. ft, Basement 994 sq. ft, Porch 163 sq. ft, Covered patio 177 sq. ft, Patio 197 sq. ft, Deck 142 sq. ft, Garage 782 sq. ft, Fireplace 12 sq. ft, Walls: 323 sq. ft

Property summary



Home report

2415 Bluestem Willow Drive, Loveland, Larimer County,
Colorado, United States, 80538



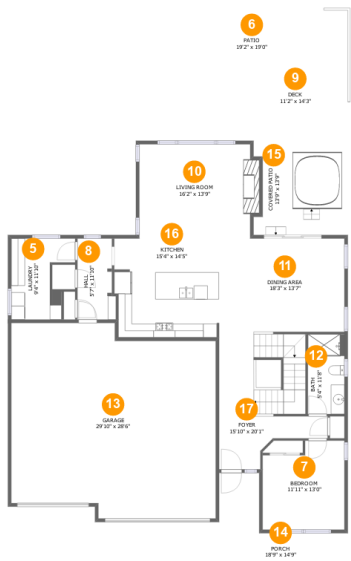
Room dimensions

Floor 1 Below ground Total:152sqft Excluded: 1041sqft

#		Max Dimensions	sqft	Included
1	Utility	5'4" x 7'7"	40 sq. ft	No
2	Basement	17'0" x 28'4"	273 sq. ft	No
3	Basement	47'11" x 25'1"	721 sq. ft	No
4	Hall	8'5" x 11'8"	137 sq. ft	Yes

Home report

2415 Bluestem Willow Drive, Loveland, Larimer County,
Colorado, United States, 80538



Room dimensions

Floor 2 Total:1342sqft Excluded: 1473sqft

#		Max Dimensions	sqft	Included
5	Laundry	9'4" x 11'10"	86 sq. ft	Yes
6	Patio	19'2" x 19'0"	197 sq. ft	No
7	Bedroom	11'11" x 13'0"	142 sq. ft	Yes
8	Hall	5'7" x 11'10"	61 sq. ft	Yes
9	Deck	11'2" x 14'3"	142 sq. ft	No
10	Living Room	16'2" x 13'9"	232 sq. ft	Yes
11	Dining Area	18'3" x 13'7"	249 sq. ft	Yes
12	Bath	5'4" x 11'8"	62 sq. ft	Yes
13	Garage	29'10" x 28'6"	782 sq. ft	No
14	Porch	18'9" x 14'9"	163 sq. ft	No
15	Covered Patio	13'9" x 13'9"	177 sq. ft	No

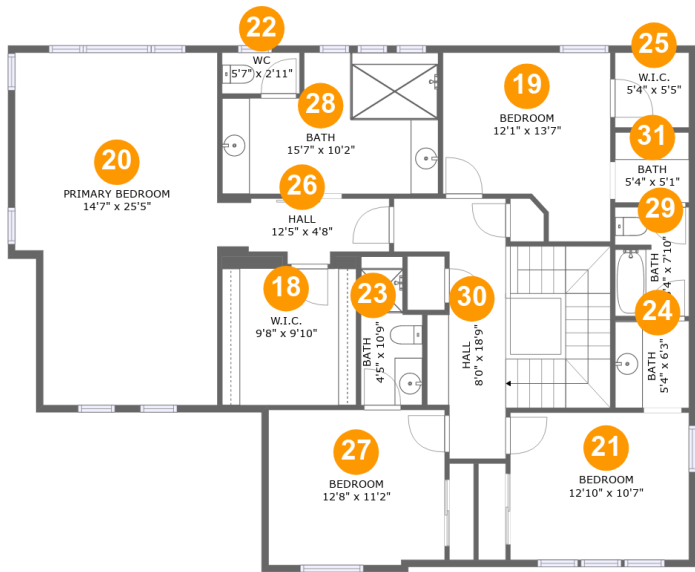
Home report

2415 Bluestem Willow Drive, Loveland, Larimer County,
Colorado, United States, 80538

#		Max Dimensions	sqft	Included
16	Kitchen	15'4" x 14'5"	216 sq. ft	Yes
17	Foyer	15'10" x 20'1"	232 sq. ft	Yes

Home report

2415 Bluestem Willow Drive, Loveland, Larimer County,
Colorado, United States, 80538



Room dimensions

Floor 3 Total:1552sqft Excluded: 0sqft

#		Max Dimensions	sqft	Included
18	W.I.C.	9'8" x 9'10"	100 sq. ft	Yes
19	Bedroom	12'1" x 13'7"	139 sq. ft	Yes
20	Primary Bedroom	14'7" x 25'5"	348 sq. ft	Yes
21	Bedroom	12'10" x 10'7"	137 sq. ft	Yes
22	WC	5'7" x 2'11"	16 sq. ft	Yes
23	Bath	4'5" x 10'9"	41 sq. ft	Yes
24	Bath	5'4" x 6'3"	33 sq. ft	Yes
25	W.I.C.	5'4" x 5'5"	29 sq. ft	Yes
26	Hall	12'5" x 4'8"	49 sq. ft	Yes
27	Bedroom	12'8" x 11'2"	141 sq. ft	Yes
28	Bath	15'7" x 10'2"	139 sq. ft	Yes

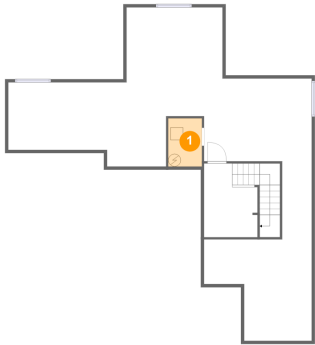
Home report

2415 Bluestem Willow Drive, Loveland, Larimer County,
Colorado, United States, 80538

#		Max Dimensions	sqft	Included
29	Bath	5'4" x 7'10"	41 sq. ft	Yes
30	Hall	8'0" x 18'9"	190 sq. ft	Yes
31	Bath	5'4" x 5'1"	27 sq. ft	Yes

2415 Bluestem Willow Drive, Loveland, Larimer County,
Colorado, United States, 80538

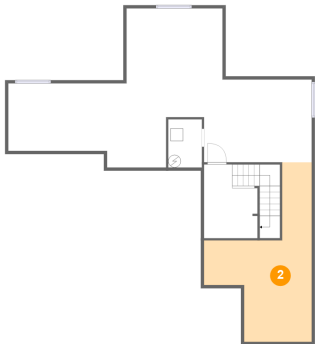
1 Floor 1 - Utility



Max Dimensions: 5'4" x 7'7"
Calculated Area: 40 sq. ft
Included: No

Heated: Yes
Finished: No
Enclosed: Yes
Contiguous: Yes
Permitted: Yes
Wet space: No
Addition: No
Conversion: No

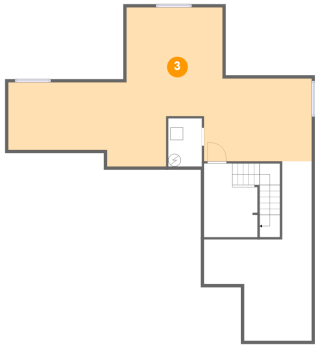
2 Floor 1 - Basement



Max Dimensions: 17'0" x 28'4"
Calculated Area: 273 sq. ft
Included: No

Heated: Yes
Finished: No
Enclosed: Yes
Contiguous: Yes
Permitted: Yes
Wet space: No
Addition: No
Conversion: No

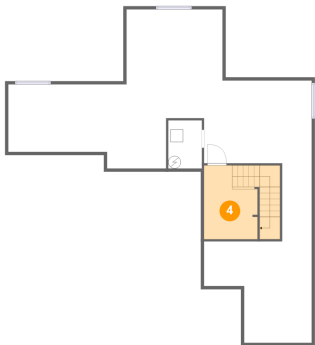
3 Floor 1 - Basement



Max Dimensions: 47'11" x 25'1"
Calculated Area: 721 sq. ft
Included: No

Heated: Yes
Finished: No
Enclosed: Yes
Contiguous: Yes
Permitted: Yes
Wet space: No
Addition: No
Conversion: No

4 Floor 1 - Hall



Max Dimensions: 8'5" x 11'8"
Calculated Area: 137 sq. ft
Included: Yes

Heated: Yes
Finished: Yes
Enclosed: Yes
Contiguous: Yes
Permitted: Yes
Wet space: No
Addition: No
Conversion: No

5 Floor 2 - Laundry



Max Dimensions: 9'4" x 11'10"
Calculated Area: 86 sq. ft
Included: Yes

Heated: Yes
Finished: Yes
Enclosed: Yes
Contiguous: Yes
Permitted: Yes
Wet space: No
Addition: No
Conversion: No

2415 Bluestem Willow Drive, Loveland, Larimer County,
Colorado, United States, 80538

6 Floor 2 - Patio



Max Dimensions: 19'2" x 19'0"
Calculated Area: 197 sq. ft
Included: No

Heated: No
Finished: Yes
Enclosed: No
Contiguous: Yes
Permitted: Yes
Wet space: No
Addition: No
Conversion: No

7 Floor 2 - Bedroom



Max Dimensions: 11'11" x 13'0"
Calculated Area: 142 sq. ft
Included: Yes

Heated: Yes
Finished: Yes
Enclosed: Yes
Contiguous: Yes
Permitted: Yes
Wet space: No
Addition: No
Conversion: No

8 Floor 2 - Hall



Max Dimensions: 5'7" x 11'10"
Calculated Area: 61 sq. ft
Included: Yes

Heated: Yes
Finished: Yes
Enclosed: Yes
Contiguous: Yes
Permitted: Yes
Wet space: No
Addition: No
Conversion: No

2415 Bluestem Willow Drive, Loveland, Larimer County,
Colorado, United States, 80538

9 Floor 2 - Deck



Max Dimensions: 11'2" x 14'3"
Calculated Area: 142 sq. ft
Included: No

Heated: No
Finished: Yes
Enclosed: No
Contiguous: Yes
Permitted: Yes
Wet space: No
Addition: No
Conversion: No

10 Floor 2 - Living Room



Max Dimensions: 16'2" x 13'9"
Calculated Area: 232 sq. ft
Included: Yes

Heated: Yes
Finished: Yes
Enclosed: Yes
Contiguous: Yes
Permitted: Yes
Wet space: No
Addition: No
Conversion: No

11 Floor 2 - Dining Area



Max Dimensions: 18'3" x 13'7"
Calculated Area: 249 sq. ft
Included: Yes

Heated: Yes
Finished: Yes
Enclosed: Yes
Contiguous: Yes
Permitted: Yes
Wet space: No
Addition: No
Conversion: No

12 Floor 2 - Bath



Max Dimensions: 5'4" x 11'8"
Calculated Area: 62 sq. ft
Included: Yes

Heated: Yes
Finished: Yes
Enclosed: Yes
Contiguous: Yes
Permitted: Yes
Wet space: Yes
Addition: No
Conversion: No

13 Floor 2 - Garage



Max Dimensions: 29'10" x 28'6"
Calculated Area: 782 sq. ft
Included: No

Heated: No
Finished: No
Enclosed: Yes
Contiguous: Yes
Permitted: Yes
Wet space: No
Addition: No
Conversion: No

14 Floor 2 - Porch



Max Dimensions: 18'9" x 14'9"
Calculated Area: 163 sq. ft
Included: No

Heated: No
Finished: Yes
Enclosed: No
Contiguous: Yes
Permitted: Yes
Wet space: No
Addition: No
Conversion: No

2415 Bluestem Willow Drive, Loveland, Larimer County,
Colorado, United States, 80538

15 Floor 2 - Covered Patio



Max Dimensions: 13'9" x 13'9"
Calculated Area: 177 sq. ft
Included: No

Heated: No
Finished: Yes
Enclosed: No
Contiguous: Yes
Permitted: Yes
Wet space: No
Addition: No
Conversion: No

16 Floor 2 - Kitchen



Max Dimensions: 15'4" x 14'5"
Calculated Area: 216 sq. ft
Included: Yes

Heated: Yes
Finished: Yes
Enclosed: Yes
Contiguous: Yes
Permitted: Yes
Wet space: No
Addition: No
Conversion: No

17 Floor 2 - Foyer

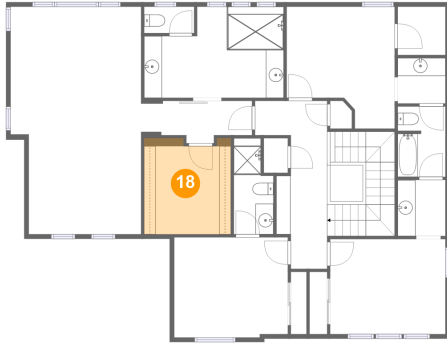


Max Dimensions: 15'10" x 20'1"
Calculated Area: 232 sq. ft
Included: Yes

Heated: Yes
Finished: Yes
Enclosed: Yes
Contiguous: Yes
Permitted: Yes
Wet space: No
Addition: No
Conversion: No

2415 Bluestem Willow Drive, Loveland, Larimer County,
Colorado, United States, 80538

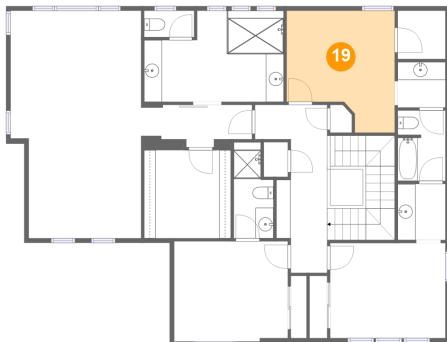
18 Floor 3 - W.I.C.



Max Dimensions: 9'8" x 9'10"
Calculated Area: 100 sq. ft
Included: Yes

Heated: Yes
Finished: Yes
Enclosed: Yes
Contiguous: Yes
Permitted: Yes
Wet space: No
Addition: No
Conversion: No

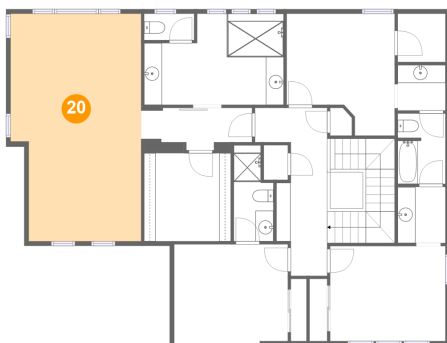
19 Floor 3 - Bedroom



Max Dimensions: 12'1" x 13'7"
Calculated Area: 139 sq. ft
Included: Yes

Heated: Yes
Finished: Yes
Enclosed: Yes
Contiguous: Yes
Permitted: Yes
Wet space: No
Addition: No
Conversion: No

20 Floor 3 - Primary Bedroom

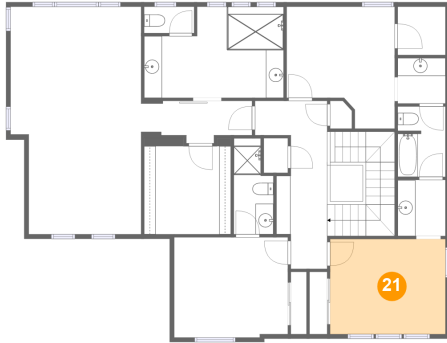


Max Dimensions: 14'7" x 25'5"
Calculated Area: 348 sq. ft
Included: Yes

Heated: Yes
Finished: Yes
Enclosed: Yes
Contiguous: Yes
Permitted: Yes
Wet space: No
Addition: No
Conversion: No

2415 Bluestem Willow Drive, Loveland, Larimer County,
Colorado, United States, 80538

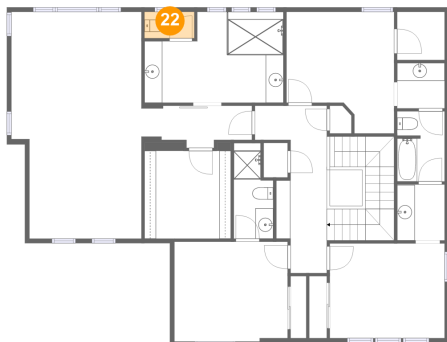
21 Floor 3 - Bedroom



Max Dimensions: 12'10" x 10'7"
Calculated Area: 137 sq. ft
Included: Yes

Heated: Yes
Finished: Yes
Enclosed: Yes
Contiguous: Yes
Permitted: Yes
Wet space: No
Addition: No
Conversion: No

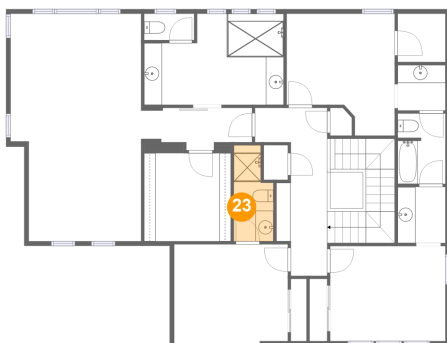
22 Floor 3 - WC



Max Dimensions: 5'7" x 2'11"
Calculated Area: 16 sq. ft
Included: Yes

Heated: Yes
Finished: Yes
Enclosed: Yes
Contiguous: Yes
Permitted: Yes
Wet space: Yes
Addition: No
Conversion: No

23 Floor 3 - Bath

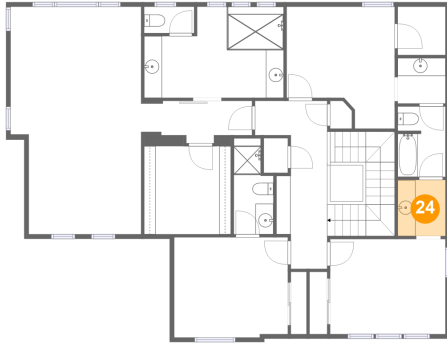


Max Dimensions: 4'5" x 10'9"
Calculated Area: 41 sq. ft
Included: Yes

Heated: Yes
Finished: Yes
Enclosed: Yes
Contiguous: Yes
Permitted: Yes
Wet space: Yes
Addition: No
Conversion: No

2415 Bluestem Willow Drive, Loveland, Larimer County,
Colorado, United States, 80538

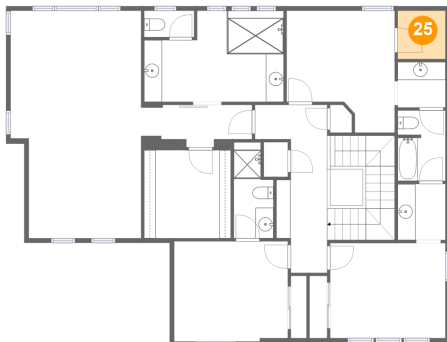
24 Floor 3 - Bath



Max Dimensions: 5'4" x 6'3"
Calculated Area: 33 sq. ft
Included: Yes

Heated: Yes
Finished: Yes
Enclosed: Yes
Contiguous: Yes
Permitted: Yes
Wet space: Yes
Addition: No
Conversion: No

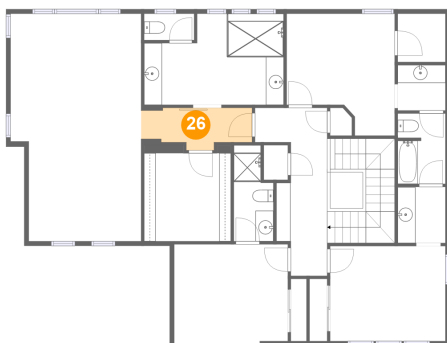
25 Floor 3 - W.I.C.



Max Dimensions: 5'4" x 5'5"
Calculated Area: 29 sq. ft
Included: Yes

Heated: Yes
Finished: Yes
Enclosed: Yes
Contiguous: Yes
Permitted: Yes
Wet space: No
Addition: No
Conversion: No

26 Floor 3 - Hall

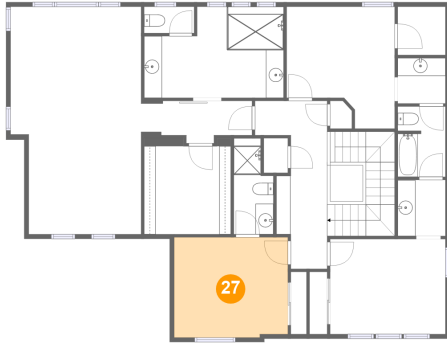


Max Dimensions: 12'5" x 4'8"
Calculated Area: 49 sq. ft
Included: Yes

Heated: Yes
Finished: Yes
Enclosed: Yes
Contiguous: Yes
Permitted: Yes
Wet space: No
Addition: No
Conversion: No

2415 Bluestem Willow Drive, Loveland, Larimer County,
Colorado, United States, 80538

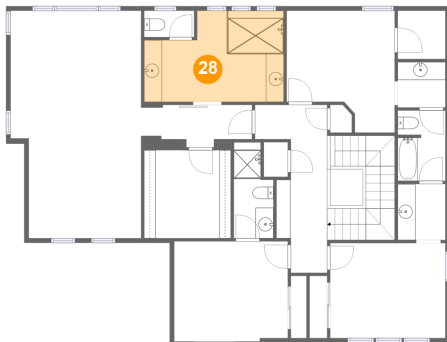
27 Floor 3 - Bedroom



Max Dimensions: 12'8" x 11'2"
Calculated Area: 141 sq. ft
Included: Yes

Heated: Yes
Finished: Yes
Enclosed: Yes
Contiguous: Yes
Permitted: Yes
Wet space: No
Addition: No
Conversion: No

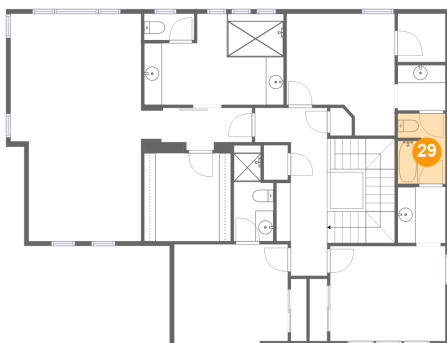
28 Floor 3 - Bath



Max Dimensions: 15'7" x 10'2"
Calculated Area: 139 sq. ft
Included: Yes

Heated: Yes
Finished: Yes
Enclosed: Yes
Contiguous: Yes
Permitted: Yes
Wet space: Yes
Addition: No
Conversion: No

29 Floor 3 - Bath

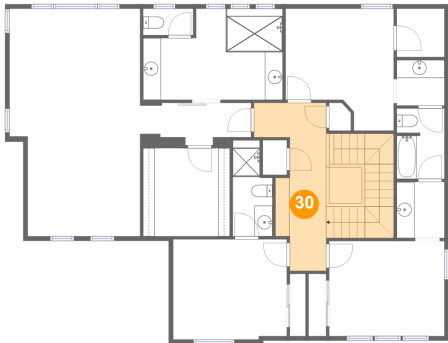


Max Dimensions: 5'4" x 7'10"
Calculated Area: 41 sq. ft
Included: Yes

Heated: Yes
Finished: Yes
Enclosed: Yes
Contiguous: Yes
Permitted: Yes
Wet space: Yes
Addition: No
Conversion: No

2415 Bluestem Willow Drive, Loveland, Larimer County,
Colorado, United States, 80538

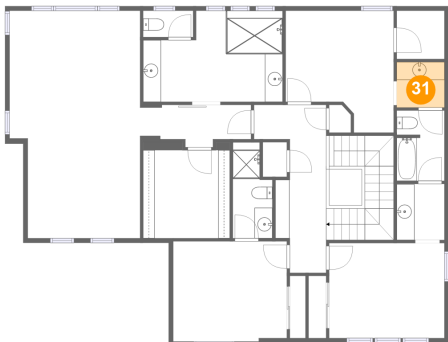
30 Floor 3 - Hall



Max Dimensions: 8'0" x 18'9"
Calculated Area: 190 sq. ft
Included: Yes

Heated: Yes
Finished: Yes
Enclosed: Yes
Contiguous: Yes
Permitted: Yes
Wet space: No
Addition: No
Conversion: No

31 Floor 3 - Bath



Max Dimensions: 5'4" x 5'1"
Calculated Area: 27 sq. ft
Included: Yes

Heated: Yes
Finished: Yes
Enclosed: Yes
Contiguous: Yes
Permitted: Yes
Wet space: Yes
Addition: No
Conversion: No