

Home data report

127 Pinecrest Rd,Pefferlaw,ON,CA




Total Area: 2658 sq. ft

Basement: 1312 sq. ft, 1st Floor: 1346 sq. ft

Excluded: Garage 360 sq. ft, Porch 96 sq. ft, Deck 741 sq. ft, Fireplace 12 sq. ft, Walls: 179 sq. ft

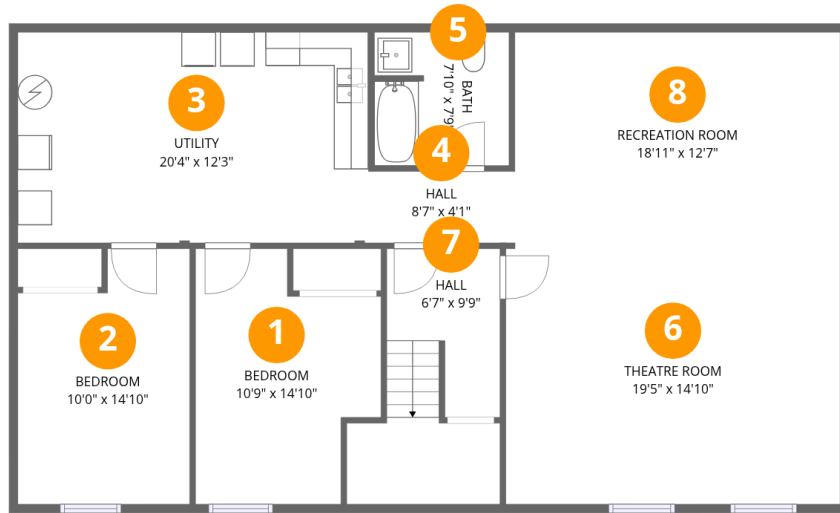
Property summary

 **2** Floors

 **5** Bedrooms

 **2** Bathrooms

 **1** Garages



Room dimensions

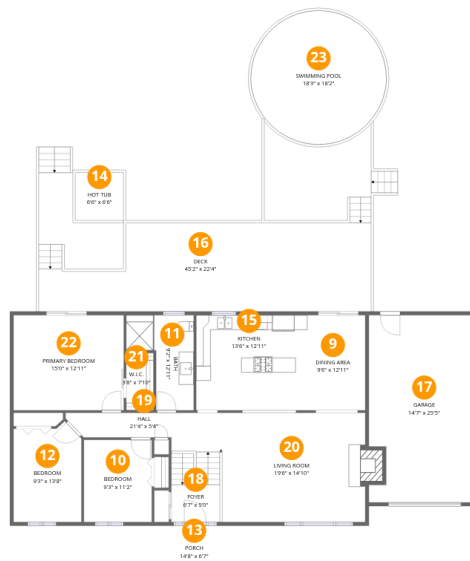
Floor 1 Below grade

Total:1312sqft

Excluded: 0sqft

#		Dimensions	sqft	Counted as living area
1	Bedroom	10'9" x 14'10"	133 sq. ft	Yes
2	Bedroom	10'0" x 14'10"	135 sq. ft	Yes
3	Utility	20'4" x 12'3"	249 sq. ft	Yes
4	Hall	8'7" x 4'1"	36 sq. ft	Yes
5	Bath	7'10" x 7'9"	60 sq. ft	Yes
6	Theatre Room	19'5" x 14'10"	289 sq. ft	Yes
7	Hall	6'7" x 9'9"	106 sq. ft	Yes
8	Recreation Room	18'11" x 12'7"	238 sq. ft	Yes

127 Pinecrest Rd,Pefferlaw,ON,CA



Room dimensions

Floor 2

Total:1346sqft

Excluded: 1209sqft

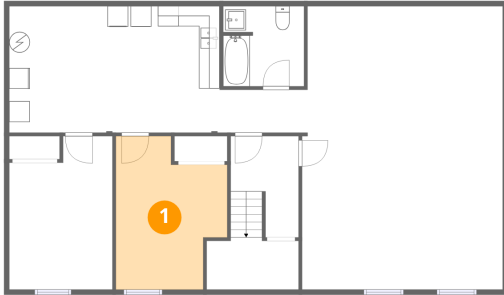
#		Dimensions	sqft	Counted as living area
9	Dining Area	9'6" x 12'11"	122 sq. ft	Yes
10	Bedroom	9'3" x 11'2"	103 sq. ft	Yes
11	Bath	9'2" x 12'11"	86 sq. ft	Yes
12	Bedroom	9'3" x 13'8"	117 sq. ft	Yes
13	Porch	14'8" x 6'7"	96 sq. ft	No
14	Hot Tub	6'6" x 6'6"	43 sq. ft	No
15	Kitchen	13'6" x 12'11"	177 sq. ft	Yes
16	Deck	45'2" x 22'4"	741 sq. ft	No
17	Garage	14'7" x 25'5"	360 sq. ft	No
18	Foyer	6'7" x 5'0"	66 sq. ft	Yes
19	Hall	21'4" x 5'4"	82 sq. ft	Yes

Home data report

127 Pinecrest Rd,Pefferlaw,ON,CA

#		Dimensions	sqft	Counted as living area
20	Living Room	19'6" x 14'10"	299 sq. ft	Yes
21	W.I.C.	3'8" x 7'10"	29 sq. ft	Yes
22	Primary Bedroom	15'0" x 12'11"	194 sq. ft	Yes
23	Swimming Pool	18'3" x 18'2"	263 sq. ft	No

1 Floor 1 - Bedroom



Dimensions: 10'9" x 14'10"
Area: 133 sq. ft
Counted as living area: Yes

Heated: Yes
Finished: Yes
Enclosed: Yes
Contiguous: Yes
Permitted: Yes
Wet space: No
Addition: No
Conversion: No

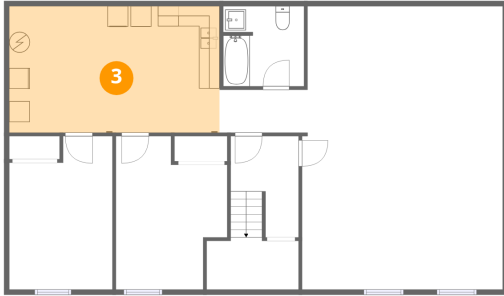
2 Floor 1 - Bedroom



Dimensions: 10'0" x 14'10"
Area: 135 sq. ft
Counted as living area: Yes

Heated: Yes
Finished: Yes
Enclosed: Yes
Contiguous: Yes
Permitted: Yes
Wet space: No
Addition: No
Conversion: No

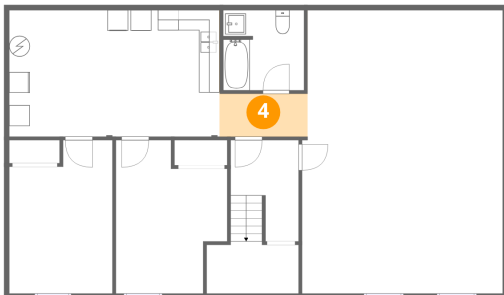
3 Floor 1 - Utility



Dimensions: 20'4" x 12'3"
Area: 249 sq. ft
Counted as living area: Yes

Heated: Yes
Finished: Yes
Enclosed: Yes
Contiguous: Yes
Permitted: Yes
Wet space: No
Addition: No
Conversion: No

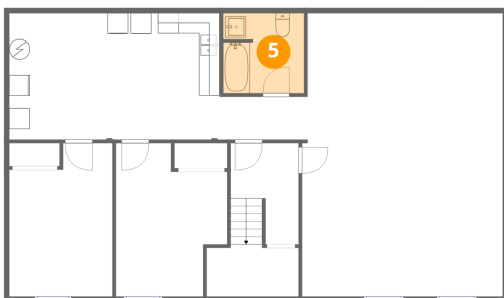
4 Floor 1 - Hall



Dimensions: 8'7" x 4'1"
Area: 36 sq. ft
Counted as living area: Yes

Heated: Yes
Finished: Yes
Enclosed: Yes
Contiguous: Yes
Permitted: Yes
Wet space: No
Addition: No
Conversion: No

5 Floor 1 - Bath



Dimensions: 7'10" x 7'9"
Area: 60 sq. ft
Counted as living area: Yes

Heated: Yes
Finished: Yes
Enclosed: Yes
Contiguous: Yes
Permitted: Yes
Wet space: Yes
Addition: No
Conversion: No

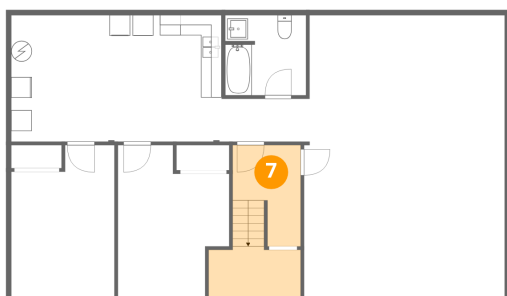
6 Floor 1 - Theatre Room



Dimensions: 19'5" x 14'10"
Area: 289 sq. ft
Counted as living area: Yes

Heated: Yes
Finished: Yes
Enclosed: Yes
Contiguous: Yes
Permitted: Yes
Wet space: No
Addition: No
Conversion: No

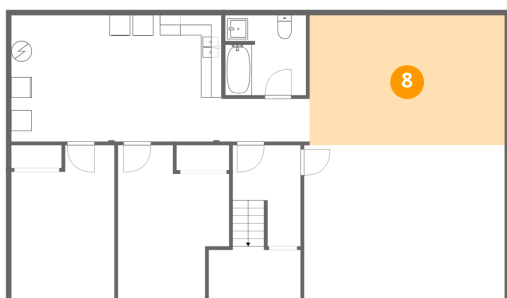
7 Floor 1 - Hall



Dimensions: 6'7" x 9'9"
Area: 106 sq. ft
Counted as living area: Yes

Heated: Yes
Finished: Yes
Enclosed: Yes
Contiguous: Yes
Permitted: Yes
Wet space: No
Addition: No
Conversion: No

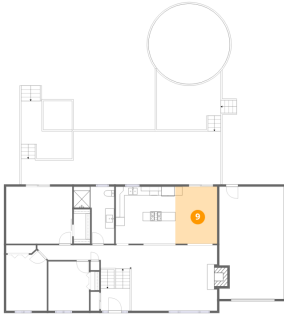
8 Floor 1 - Recreation Room



Dimensions: 18'11" x 12'7"
Area: 238 sq. ft
Counted as living area: Yes

Heated: Yes
Finished: Yes
Enclosed: Yes
Contiguous: Yes
Permitted: Yes
Wet space: No
Addition: No
Conversion: No

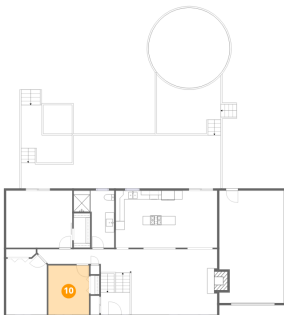
9 Floor 2 - Dining Area



Dimensions: 9'6" x 12'11"
Area: 122 sq. ft
Counted as living area: Yes

Heated: Yes
Finished: Yes
Enclosed: Yes
Contiguous: Yes
Permitted: Yes
Wet space: No
Addition: No
Conversion: No

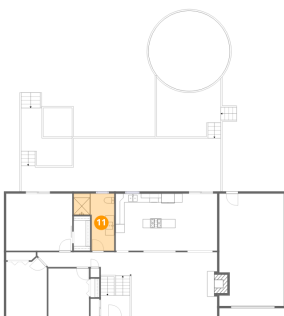
10 Floor 2 - Bedroom



Dimensions: 9'3" x 11'2"
Area: 103 sq. ft
Counted as living area: Yes

Heated: Yes
Finished: Yes
Enclosed: Yes
Contiguous: Yes
Permitted: Yes
Wet space: No
Addition: No
Conversion: No

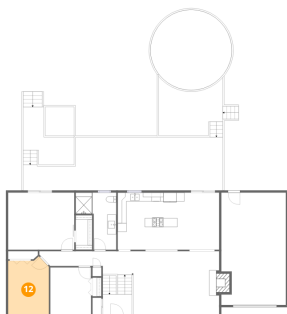
11 Floor 2 - Bath



Dimensions: 9'2" x 12'11"
Area: 86 sq. ft
Counted as living area: Yes

Heated: Yes
Finished: Yes
Enclosed: Yes
Contiguous: Yes
Permitted: Yes
Wet space: Yes
Addition: No
Conversion: No

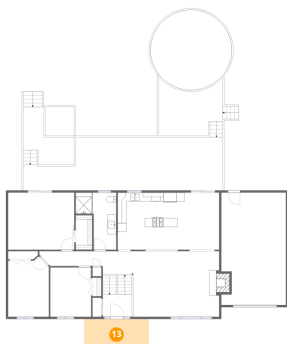
12 Floor 2 - Bedroom



Dimensions: 9'3" x 13'8"
Area: 117 sq. ft
Counted as living area: Yes

Heated: Yes
Finished: Yes
Enclosed: Yes
Contiguous: Yes
Permitted: Yes
Wet space: No
Addition: No
Conversion: No

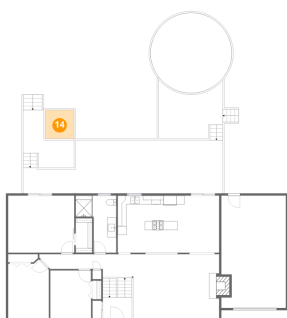
13 Floor 2 - Porch



Dimensions: 14'8" x 6'7"
Area: 96 sq. ft
Counted as living area: No

Heated: No
Finished: No
Enclosed: No
Contiguous: Yes
Permitted: Yes
Wet space: No
Addition: No
Conversion: No

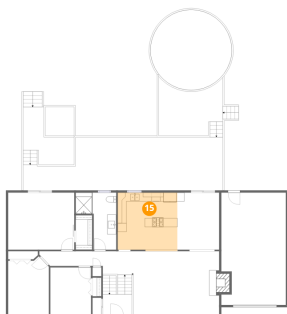
14 Floor 2 - Hot Tub



Dimensions: 6'6" x 6'6"
Area: 43 sq. ft
Counted as living area: No

Heated: No
Finished: No
Enclosed: No
Contiguous: Yes
Permitted: No
Wet space: No
Addition: No
Conversion: No

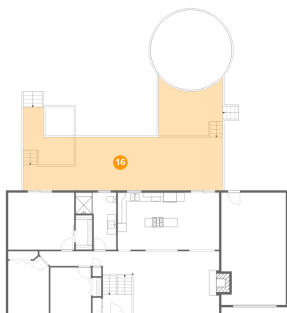
15 Floor 2 - Kitchen



Dimensions: 13'6" x 12'11"
Area: 177 sq. ft
Counted as living area: Yes

Heated: Yes
Finished: Yes
Enclosed: Yes
Contiguous: Yes
Permitted: Yes
Wet space: No
Addition: No
Conversion: No

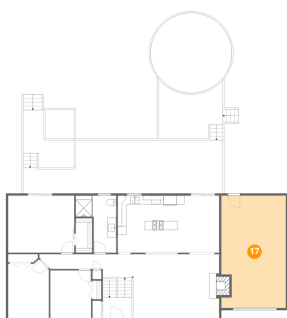
16 Floor 2 - Deck



Dimensions: 45'2" x 22'4"
Area: 741 sq. ft
Counted as living area: No

Heated: No
Finished: No
Enclosed: No
Contiguous: Yes
Permitted: Yes
Wet space: No
Addition: No
Conversion: No

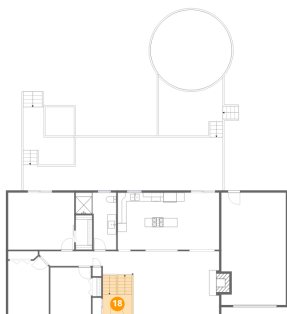
17 Floor 2 - Garage



Dimensions: 14'7" x 25'5"
Area: 360 sq. ft
Counted as living area: No

Heated: No
Finished: No
Enclosed: Yes
Contiguous: Yes
Permitted: Yes
Wet space: No
Addition: No
Conversion: No

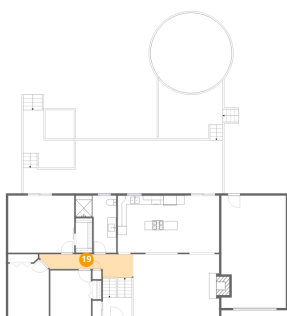
18 Floor 2 - Foyer



Dimensions: 6'7" x 5'0"
Area: 66 sq. ft
Counted as living area: Yes

Heated: Yes
Finished: Yes
Enclosed: Yes
Contiguous: Yes
Permitted: Yes
Wet space: No
Addition: No
Conversion: No

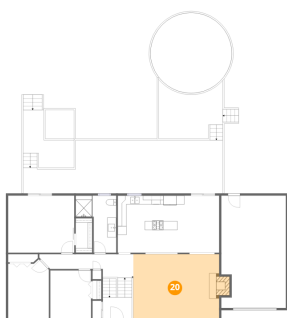
19 Floor 2 - Hall



Dimensions: 21'4" x 5'4"
Area: 82 sq. ft
Counted as living area: Yes

Heated: Yes
Finished: Yes
Enclosed: Yes
Contiguous: Yes
Permitted: Yes
Wet space: No
Addition: No
Conversion: No

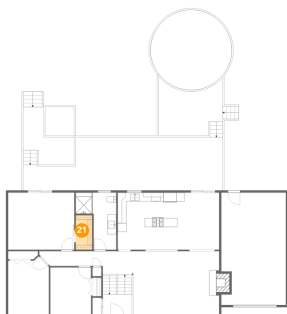
20 Floor 2 - Living Room



Dimensions: 19'6" x 14'10"
Area: 299 sq. ft
Counted as living area: Yes

Heated: Yes
Finished: Yes
Enclosed: Yes
Contiguous: Yes
Permitted: Yes
Wet space: No
Addition: No
Conversion: No

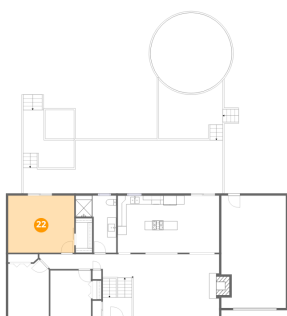
21 Floor 2 - W.I.C.



Dimensions: 3'8" x 7'10"
Area: 29 sq. ft
Counted as living area: Yes

Heated: Yes
Finished: Yes
Enclosed: Yes
Contiguous: Yes
Permitted: Yes
Wet space: No
Addition: No
Conversion: No

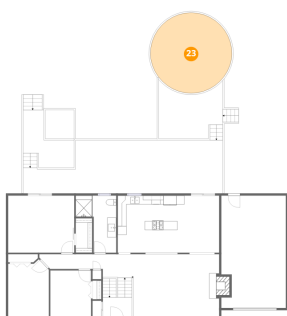
22 Floor 2 - Primary Bedroom



Dimensions: 15'0" x 12'11"
Area: 194 sq. ft
Counted as living area: Yes

Heated: Yes
Finished: Yes
Enclosed: Yes
Contiguous: Yes
Permitted: Yes
Wet space: No
Addition: No
Conversion: No

23 Floor 2 - Swimming Pool



Dimensions: 18'3" x 18'2"
Area: 263 sq. ft
Counted as living area: No

Heated: No
Finished: No
Enclosed: No
Contiguous: Yes
Permitted: No
Wet space: No
Addition: No
Conversion: No