

Home data report

202 Folly Road, Elgin, United Counties of Leeds and Grenville,  
Ontario, Canada, K0G 1E0



**Total Area: 2047 sq. ft**  
1st Floor: 770 sq. ft, 2nd Floor: 527 sq. ft, 3rd Floor: 750 sq. ft  
Excluded: Fireplace 9 sq. ft, Walls: 159 sq. ft

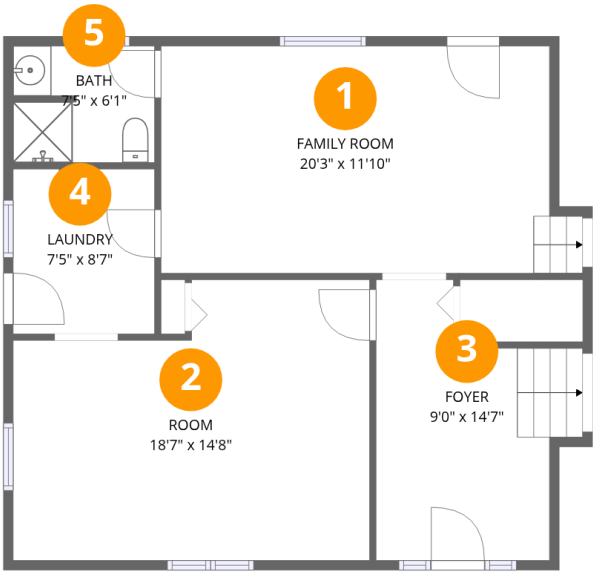
Property summary

 **3** Floors

 **4** Bedrooms

 **2** Bathrooms

202 Folly Road, Elgin, United Counties of Leeds and Grenville,  
Ontario, Canada, K0G 1E0

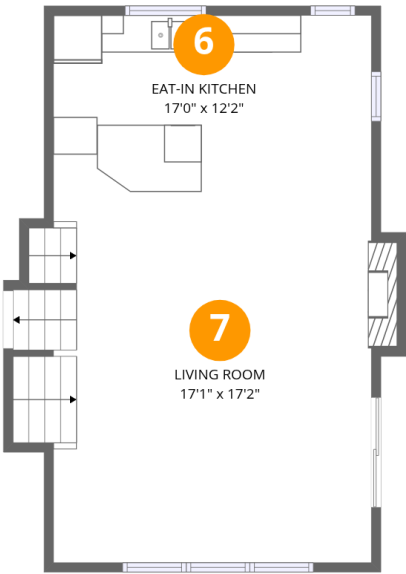


Room dimensions

Floor 1 Total:770sqft   Excluded: 0sqft

#		Dimensions	sqft	Counted as living area
1	Family Room	20'3" x 11'10"	245 sq. ft	Yes
2	Room	18'7" x 14'8"	243 sq. ft	Yes
3	Foyer	9'0" x 14'7"	123 sq. ft	Yes
4	Laundry	7'5" x 8'7"	63 sq. ft	Yes
5	Bath	7'5" x 6'1"	44 sq. ft	Yes

202 Folly Road, Elgin, United Counties of Leeds and Grenville,  
Ontario, Canada, K0G 1E0



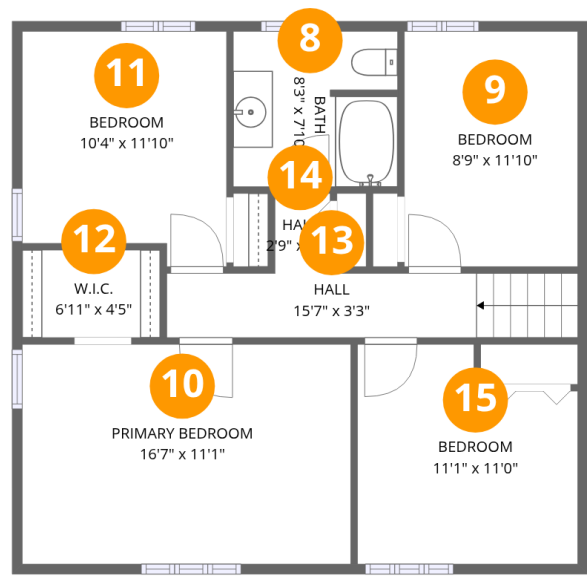
Room dimensions

Floor 2 Total:527sqft   Excluded: 9sqft

#		Dimensions	sqft	Counted as living area
6	Eat-in Kitchen	17'0" x 12'2"	206 sq. ft	Yes
7	Living Room	17'1" x 17'2"	323 sq. ft	Yes

Home data report

202 Folly Road, Elgin, United Counties of Leeds and Grenville,  
Ontario, Canada, K0G 1E0



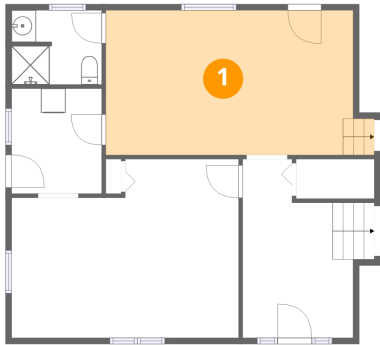
Room dimensions

Floor 3 Total:750sqft Excluded: 0sqft

#		Dimensions	sqft	Counted as living area
8	Bath	8'3" x 7'10"	64 sq. ft	Yes
9	Bedroom	8'9" x 11'10"	103 sq. ft	Yes
10	Primary Bedroom	16'7" x 11'1"	183 sq. ft	Yes
11	Bedroom	10'4" x 11'10"	113 sq. ft	Yes
12	W.I.C.	6'11" x 4'5"	31 sq. ft	Yes
13	Hall	15'7" x 3'3"	67 sq. ft	Yes
14	Hall	2'9" x 4'0"	11 sq. ft	Yes
15	Bedroom	11'1" x 11'0"	110 sq. ft	Yes

202 Folly Road, Elgin, United Counties of Leeds and Grenville,  
Ontario, Canada, K0G 1E0

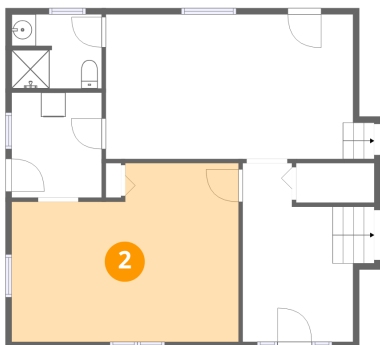
1 Floor 1 - Family Room



Dimensions: 20'3" x 11'10"  
Area: 245 sq. ft  
Counted as living area: Yes

Heated: Yes  
Finished: Yes  
Enclosed: Yes  
Contiguous: Yes  
Permitted: Yes  
Wet space: No  
Addition: No  
Conversion: No

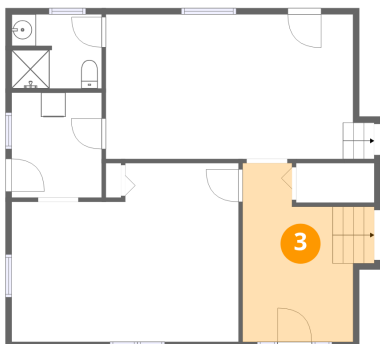
2 Floor 1 - Room



Dimensions: 18'7" x 14'8"  
Area: 243 sq. ft  
Counted as living area: Yes

Heated: Yes  
Finished: Yes  
Enclosed: Yes  
Contiguous: Yes  
Permitted: Yes  
Wet space: No  
Addition: No  
Conversion: No

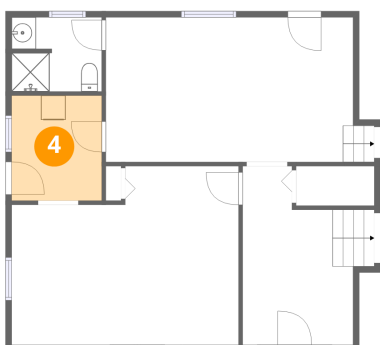
### 3 Floor 1 - Foyer



Dimensions: 9'0" x 14'7"  
Area: 123 sq. ft  
Counted as living area: Yes

Heated: Yes  
Finished: Yes  
Enclosed: Yes  
Contiguous: Yes  
Permitted: Yes  
Wet space: No  
Addition: No  
Conversion: No

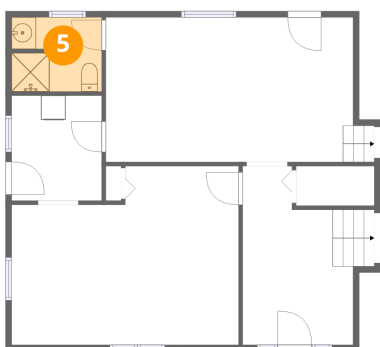
### 4 Floor 1 - Laundry



Dimensions: 7'5" x 8'7"  
Area: 63 sq. ft  
Counted as living area: Yes

Heated: Yes  
Finished: Yes  
Enclosed: Yes  
Contiguous: Yes  
Permitted: Yes  
Wet space: No  
Addition: No  
Conversion: No

### 5 Floor 1 - Bath

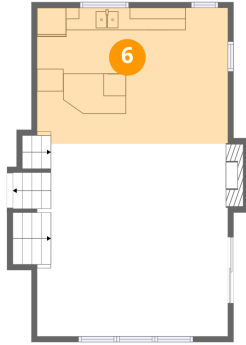


Dimensions: 7'5" x 6'1"  
Area: 44 sq. ft  
Counted as living area: Yes

Heated: Yes  
Finished: Yes  
Enclosed: Yes  
Contiguous: Yes  
Permitted: Yes  
Wet space: Yes  
Addition: No  
Conversion: No

202 Folly Road, Elgin, United Counties of Leeds and Grenville,  
Ontario, Canada, K0G 1E0

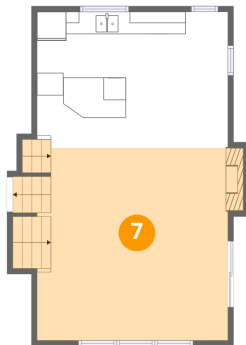
## 6 Floor 2 - Eat-in Kitchen



Dimensions: 17'0" x 12'2"  
Area: 206 sq. ft  
Counted as living area: Yes

Heated: Yes  
Finished: Yes  
Enclosed: Yes  
Contiguous: Yes  
Permitted: Yes  
Wet space: No  
Addition: No  
Conversion: No

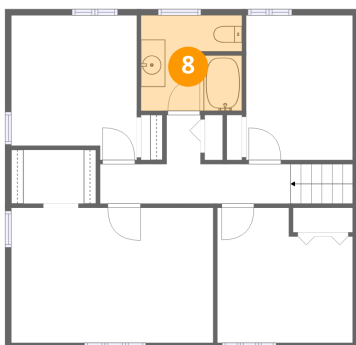
## 7 Floor 2 - Living Room



Dimensions: 17'1" x 17'2"  
Area: 323 sq. ft  
Counted as living area: Yes

Heated: Yes  
Finished: Yes  
Enclosed: Yes  
Contiguous: Yes  
Permitted: Yes  
Wet space: No  
Addition: No  
Conversion: No

## 8 Floor 3 - Bath

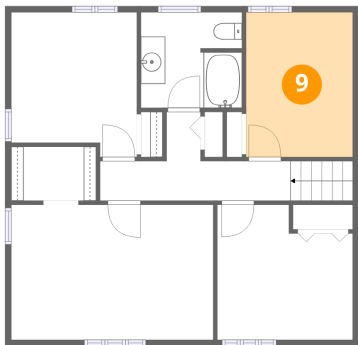


Dimensions: 8'3" x 7'10"  
Area: 64 sq. ft  
Counted as living area: Yes

Heated: Yes  
Finished: Yes  
Enclosed: Yes  
Contiguous: Yes  
Permitted: Yes  
Wet space: Yes  
Addition: No  
Conversion: No

202 Folly Road, Elgin, United Counties of Leeds and Grenville,  
Ontario, Canada, K0G 1E0

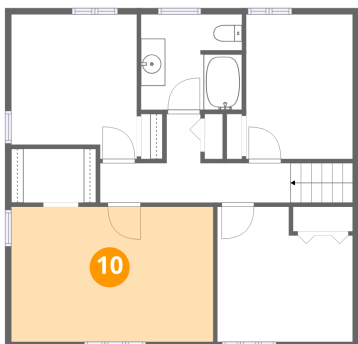
9 Floor 3 - Bedroom



Dimensions: 8'9" x 11'10"  
Area: 103 sq. ft  
Counted as living area: Yes

Heated: Yes  
Finished: Yes  
Enclosed: Yes  
Contiguous: Yes  
Permitted: Yes  
Wet space: No  
Addition: No  
Conversion: No

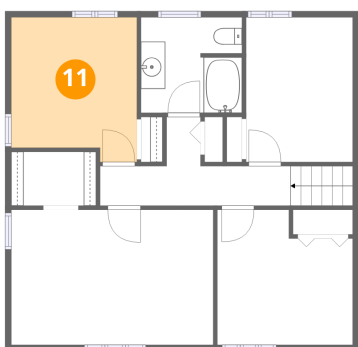
10 Floor 3 - Primary Bedroom



Dimensions: 16'7" x 11'1"  
Area: 183 sq. ft  
Counted as living area: Yes

Heated: Yes  
Finished: Yes  
Enclosed: Yes  
Contiguous: Yes  
Permitted: Yes  
Wet space: No  
Addition: No  
Conversion: No

11 Floor 3 - Bedroom

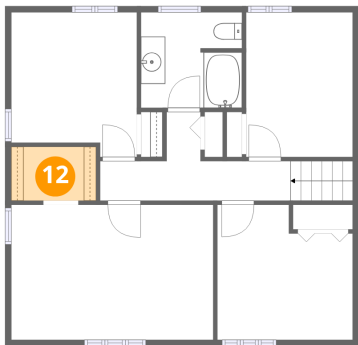


Dimensions: 10'4" x 11'10"  
Area: 113 sq. ft  
Counted as living area: Yes

Heated: Yes  
Finished: Yes  
Enclosed: Yes  
Contiguous: Yes  
Permitted: Yes  
Wet space: No  
Addition: No  
Conversion: No

202 Folly Road, Elgin, United Counties of Leeds and Grenville,  
Ontario, Canada, K0G 1E0

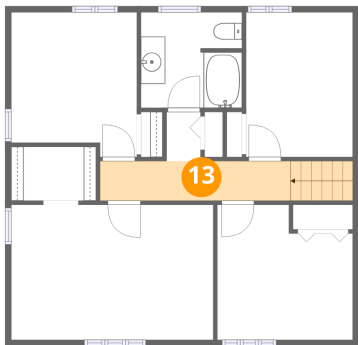
12 Floor 3 - W.I.C.



Dimensions: 6'11" x 4'5"  
Area: 31 sq. ft  
Counted as living area: Yes

Heated: Yes  
Finished: Yes  
Enclosed: Yes  
Contiguous: Yes  
Permitted: Yes  
Wet space: No  
Addition: No  
Conversion: No

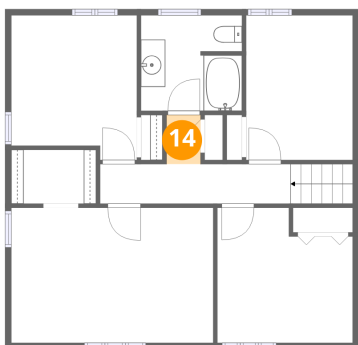
13 Floor 3 - Hall



Dimensions: 15'7" x 3'3"  
Area: 67 sq. ft  
Counted as living area: Yes

Heated: Yes  
Finished: Yes  
Enclosed: Yes  
Contiguous: Yes  
Permitted: Yes  
Wet space: No  
Addition: No  
Conversion: No

14 Floor 3 - Hall

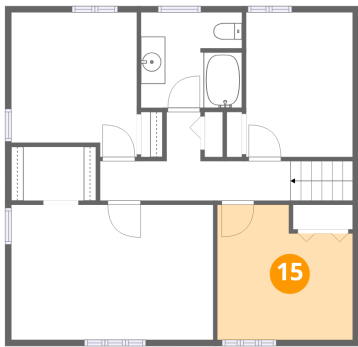


Dimensions: 2'9" x 4'0"  
Area: 11 sq. ft  
Counted as living area: Yes

Heated: Yes  
Finished: Yes  
Enclosed: Yes  
Contiguous: Yes  
Permitted: Yes  
Wet space: No  
Addition: No  
Conversion: No

202 Folly Road, Elgin, United Counties of Leeds and Grenville,  
Ontario, Canada, K0G 1E0

**15** Floor 3 - Bedroom



Dimensions: 11'1" x 11'0"  
Area: 110 sq. ft  
Counted as living area: Yes

Heated: Yes  
Finished: Yes  
Enclosed: Yes  
Contiguous: Yes  
Permitted: Yes  
Wet space: No  
Addition: No  
Conversion: No