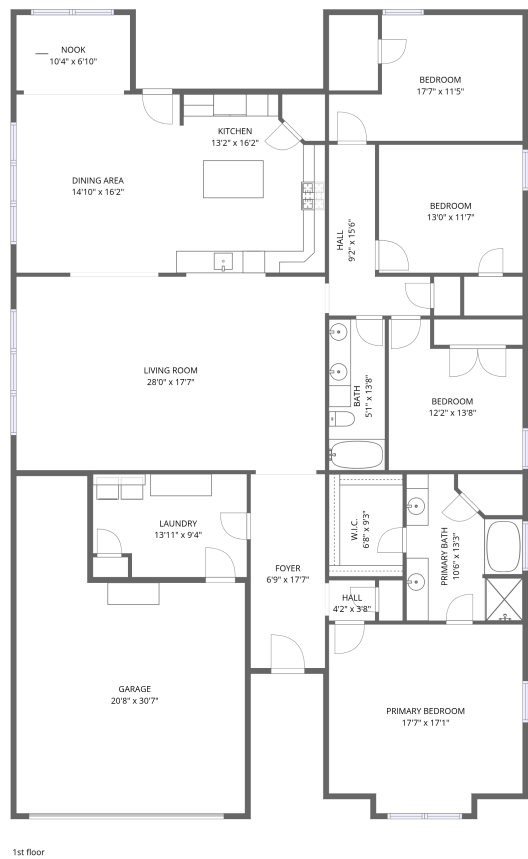


Home data report

17764 Cabernet Street,Athens,Alabama,United States



Total Area: 2756 sq. ft

1st Floor: 2756 sq. ft


Excluded: Garage 495 sq. ft

Property summary

 **1** Floors

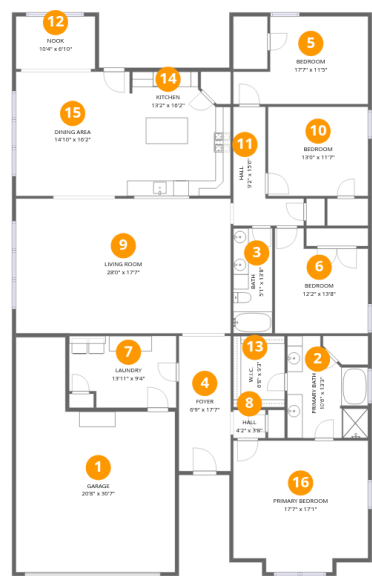
 **4** Bedrooms

 **2** Bathrooms

 **1** Garages

Home data report

17764 Cabernet Street,Athens,Alabama,United States



Room dimensions

Floor 1

Total:2756sqft Excluded: 495sqft

#		Dimensions	sqft	Counted as living area
1	Garage	20'8" x 30'7"	633 sq. ft	No
2	Primary Bath	10'6" x 13'3"	140 sq. ft	Yes
3	Bath	5'1" x 13'8"	69 sq. ft	Yes
4	Foyer	6'9" x 17'7"	119 sq. ft	Yes
5	Bedroom	17'7" x 11'5"	200 sq. ft	Yes
6	Bedroom	12'2" x 13'8"	166 sq. ft	Yes
7	Laundry	13'11" x 9'4"	130 sq. ft	Yes
8	Hall	4'2" x 3'8"	15 sq. ft	Yes
9	Living Room	28'0" x 17'7"	491 sq. ft	Yes
10	Bedroom	13'0" x 11'7"	151 sq. ft	Yes
11	Hall	9'2" x 15'6"	142 sq. ft	Yes

Home data report

17764 Cabernet Street,Athens,Alabama,United States

#		Dimensions	sqft	Counted as living area
12	Nook	10'4" x 6'10"	71 sq. ft	Yes
13	W.I.C.	6'8" x 9'3"	62 sq. ft	Yes
14	Kitchen	13'2" x 16'2"	213 sq. ft	Yes
15	Dining Area	14'10" x 16'2"	239 sq. ft	Yes
16	Primary Bedroom	17'7" x 17'1"	300 sq. ft	Yes

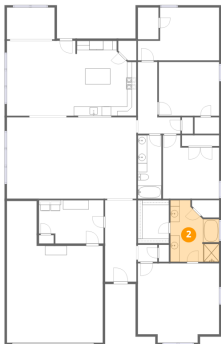
1 Floor 1 - Garage



Dimensions: 20'8" x 30'7"
Area: 633 sq. ft
Counted as living area: No

Heated: No
Finished: No
Enclosed: Yes
Contiguous: Yes
Permitted: Yes
Wet space: No
Addition: No
Conversion: No

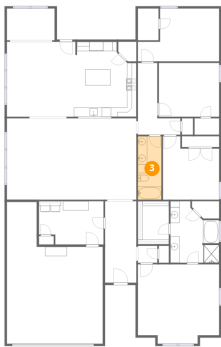
2 Floor 1 - Primary Bath



Dimensions: 10'6" x 13'3"
Area: 140 sq. ft
Counted as living area: Yes

Heated: Yes
Finished: Yes
Enclosed: Yes
Contiguous: Yes
Permitted: Yes
Wet space: Yes
Addition: No
Conversion: No

3 Floor 1 - Bath



Dimensions: 5'1" x 13'8"
Area: 69 sq. ft
Counted as living area: Yes

Heated: Yes
Finished: Yes
Enclosed: Yes
Contiguous: Yes
Permitted: Yes
Wet space: Yes
Addition: No
Conversion: No

4 Floor 1 - Foyer



Dimensions: 6'9" x 17'7"
Area: 119 sq. ft
Counted as living area: Yes

Heated: Yes
Finished: Yes
Enclosed: Yes
Contiguous: Yes
Permitted: Yes
Wet space: No
Addition: No
Conversion: No

5 Floor 1 - Bedroom



Dimensions: 17'7" x 11'5"
Area: 200 sq. ft
Counted as living area: Yes

Heated: Yes
Finished: Yes
Enclosed: Yes
Contiguous: Yes
Permitted: Yes
Wet space: No
Addition: No
Conversion: No

6 Floor 1 - Bedroom



Dimensions: 12'2" x 13'8"
Area: 166 sq. ft
Counted as living area: Yes

Heated: Yes
Finished: Yes
Enclosed: Yes
Contiguous: Yes
Permitted: Yes
Wet space: No
Addition: No
Conversion: No

7 Floor 1 - Laundry



Dimensions: 13'11" x 9'4"
Area: 130 sq. ft
Counted as living area: Yes

Heated: Yes
Finished: Yes
Enclosed: Yes
Contiguous: Yes
Permitted: Yes
Wet space: No
Addition: No
Conversion: No

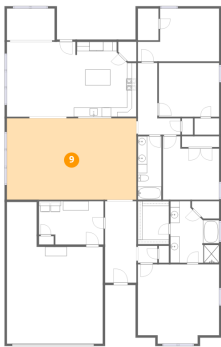
8 Floor 1 - Hall



Dimensions: 4'2" x 3'8"
Area: 15 sq. ft
Counted as living area: Yes

Heated: Yes
Finished: Yes
Enclosed: Yes
Contiguous: Yes
Permitted: Yes
Wet space: No
Addition: No
Conversion: No

9 Floor 1 - Living Room



Dimensions: 28'0" x 17'7"
Area: 491 sq. ft
Counted as living area: Yes

Heated: Yes
Finished: Yes
Enclosed: Yes
Contiguous: Yes
Permitted: Yes
Wet space: No
Addition: No
Conversion: No

10 Floor 1 - Bedroom



Dimensions: 13'0" x 11'7"
Area: 151 sq. ft
Counted as living area: Yes

Heated: Yes
Finished: Yes
Enclosed: Yes
Contiguous: Yes
Permitted: Yes
Wet space: No
Addition: No
Conversion: No

11 Floor 1 - Hall



Dimensions: 9'2" x 15'6"
Area: 142 sq. ft
Counted as living area: Yes

Heated: Yes
Finished: Yes
Enclosed: Yes
Contiguous: Yes
Permitted: Yes
Wet space: No
Addition: No
Conversion: No

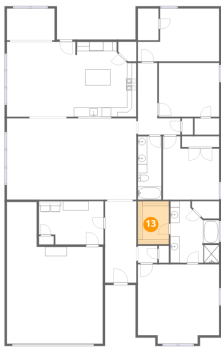
12 Floor 1 - Nook



Dimensions: 10'4" x 6'10"
Area: 71 sq. ft
Counted as living area: Yes

Heated: Yes
Finished: Yes
Enclosed: Yes
Contiguous: Yes
Permitted: Yes
Wet space: No
Addition: No
Conversion: No

13 Floor 1 - W.I.C.



Dimensions: 6'8" x 9'3"
Area: 62 sq. ft
Counted as living area: Yes

Heated: Yes
Finished: Yes
Enclosed: Yes
Contiguous: Yes
Permitted: Yes
Wet space: No
Addition: No
Conversion: No

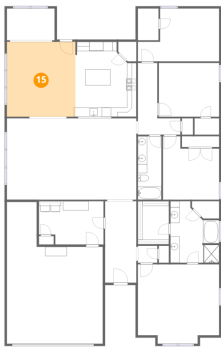
14 Floor 1 - Kitchen



Dimensions: 13'2" x 16'2"
Area: 213 sq. ft
Counted as living area: Yes

Heated: Yes
Finished: Yes
Enclosed: Yes
Contiguous: Yes
Permitted: Yes
Wet space: No
Addition: No
Conversion: No

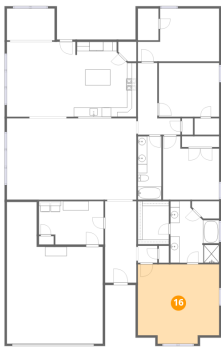
15 Floor 1 - Dining Area



Dimensions: 14'10" x 16'2"
Area: 239 sq. ft
Counted as living area: Yes

Heated: Yes
Finished: Yes
Enclosed: Yes
Contiguous: Yes
Permitted: Yes
Wet space: No
Addition: No
Conversion: No

16 Floor 1 - Primary Bedroom



Dimensions: 17'7" x 17'1"
Area: 300 sq. ft
Counted as living area: Yes

Heated: Yes
Finished: Yes
Enclosed: Yes
Contiguous: Yes
Permitted: Yes
Wet space: No
Addition: No
Conversion: No