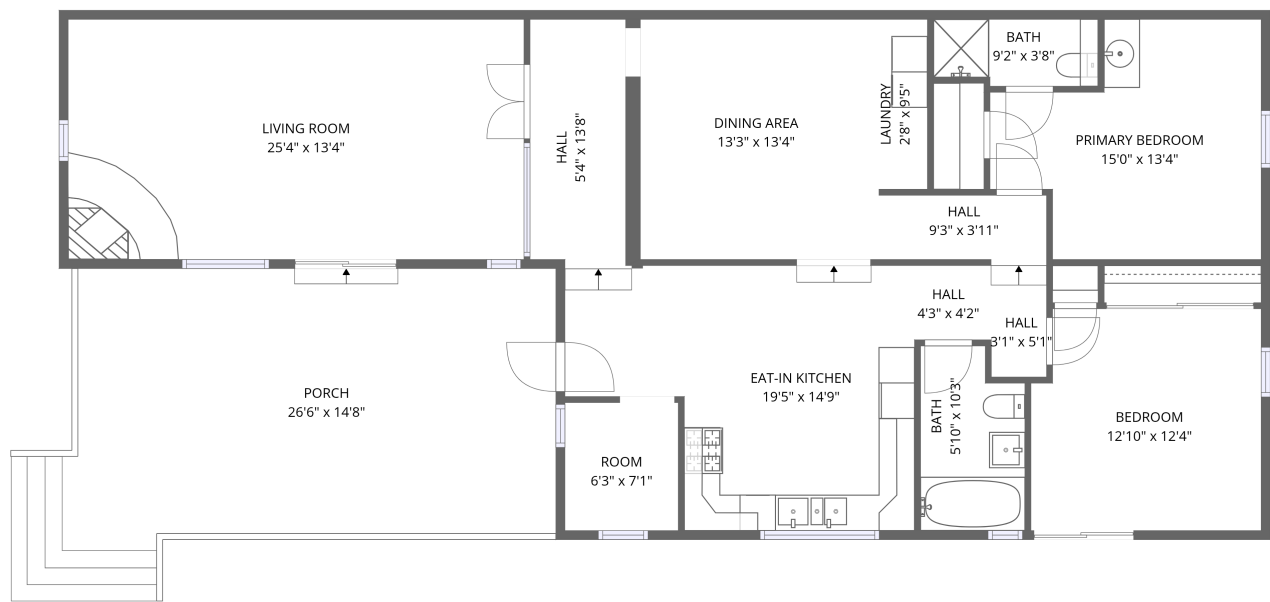


Home data report

104 Guthrie Ln,Taos,NM,US



1st floor

**Total Area: 1467 sq. ft**

1st Floor: 1467 sq. ft

Excluded: Porch 437 sq. ft, Walls: 95 sq. ft

Property summary

 **1** Floors

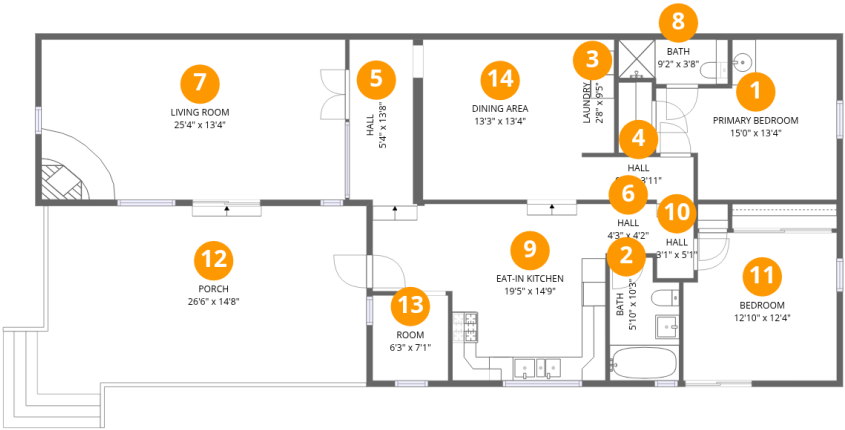
 **2** Bedrooms

 **1** Bathrooms

 **1** Half baths

Home data report

104 Guthrie Ln,Taos,NM,US



Room dimensions

Floor 1 Total:1467sqft    Excluded: 437sqft

#		Dimensions	sqft	Counted as living area
1	Primary Bedroom	15'0" x 13'4"	201 sq. ft	Yes
2	Bath	5'10" x 10'3"	59 sq. ft	Yes
3	Laundry	2'8" x 9'5"	25 sq. ft	Yes
4	Hall	9'3" x 3'11"	36 sq. ft	Yes
5	Hall	5'4" x 13'8"	73 sq. ft	Yes
6	Hall	4'3" x 4'2"	18 sq. ft	Yes
7	Living Room	25'4" x 13'4"	338 sq. ft	Yes
8	Bath	9'2" x 3'8"	34 sq. ft	Yes
9	Eat-in Kitchen	19'5" x 14'9"	286 sq. ft	Yes
10	Hall	3'1" x 5'1"	16 sq. ft	Yes
11	Bedroom	12'10" x 12'4"	158 sq. ft	Yes

Home data report

104 Guthrie Ln,Taos,NM,US

#		Dimensions	sqft	Counted as living area
12	Porch	26'6" x 14'8"	389 sq. ft	No
13	Room	6'3" x 7'1"	44 sq. ft	Yes
14	Dining Area	13'3" x 13'4"	177 sq. ft	Yes

1 Floor 1 - Primary Bedroom



Dimensions: 15'0" x 13'4"  
Area: 201 sq. ft  
Counted as living area: Yes

Heated: Yes  
Finished: Yes  
Enclosed: Yes  
Contiguous: Yes  
Permitted: Yes  
Wet space: No  
Addition: No  
Conversion: No

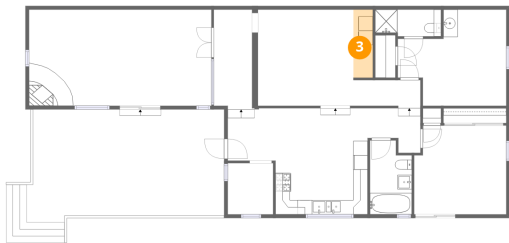
2 Floor 1 - Bath



Dimensions: 5'10" x 10'3"  
Area: 59 sq. ft  
Counted as living area: Yes

Heated: Yes  
Finished: Yes  
Enclosed: Yes  
Contiguous: Yes  
Permitted: Yes  
Wet space: Yes  
Addition: No  
Conversion: No

3 Floor 1 - Laundry



Dimensions: 2'8" x 9'5"  
Area: 25 sq. ft  
Counted as living area: Yes

Heated: Yes  
Finished: Yes  
Enclosed: Yes  
Contiguous: Yes  
Permitted: Yes  
Wet space: No  
Addition: No  
Conversion: No

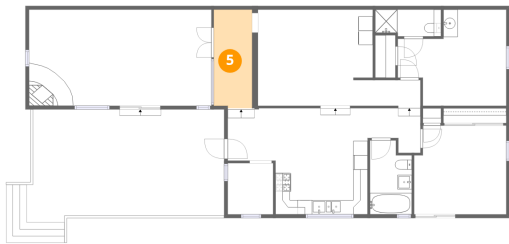
4 Floor 1 - Hall



Dimensions: 9'3" x 3'11"  
Area: 36 sq. ft  
Counted as living area: Yes

Heated: Yes  
Finished: Yes  
Enclosed: Yes  
Contiguous: Yes  
Permitted: Yes  
Wet space: No  
Addition: No  
Conversion: No

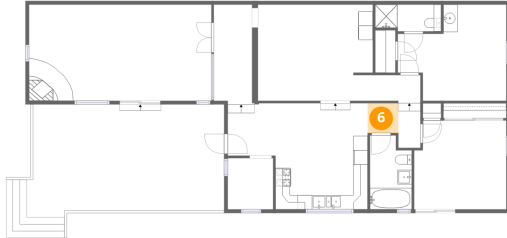
5 Floor 1 - Hall



Dimensions: 5'4" x 13'8"  
Area: 73 sq. ft  
Counted as living area: Yes

Heated: Yes  
Finished: Yes  
Enclosed: Yes  
Contiguous: Yes  
Permitted: Yes  
Wet space: No  
Addition: No  
Conversion: No

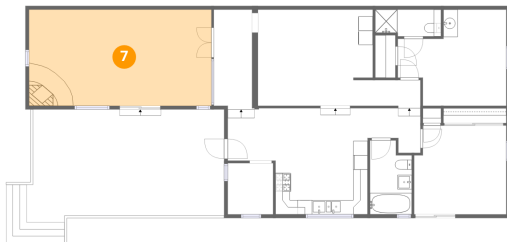
## 6 Floor 1 - Hall



Dimensions: 4'3" x 4'2"  
Area: 18 sq. ft  
Counted as living area: Yes

Heated: Yes  
Finished: Yes  
Enclosed: Yes  
Contiguous: Yes  
Permitted: Yes  
Wet space: No  
Addition: No  
Conversion: No

## 7 Floor 1 - Living Room



Dimensions: 25'4" x 13'4"  
Area: 338 sq. ft  
Counted as living area: Yes

Heated: Yes  
Finished: Yes  
Enclosed: Yes  
Contiguous: Yes  
Permitted: Yes  
Wet space: No  
Addition: No  
Conversion: No

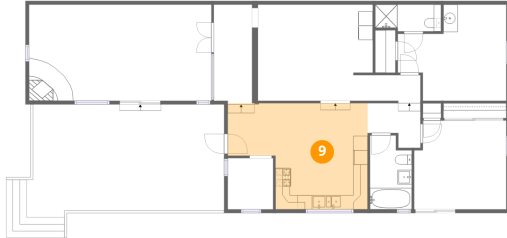
## 8 Floor 1 - Bath



Dimensions: 9'2" x 3'8"  
Area: 34 sq. ft  
Counted as living area: Yes

Heated: Yes  
Finished: Yes  
Enclosed: Yes  
Contiguous: Yes  
Permitted: Yes  
Wet space: Yes  
Addition: No  
Conversion: No

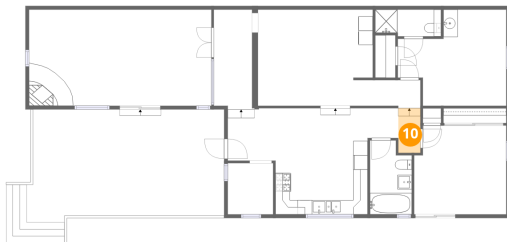
## 9 Floor 1 - Eat-in Kitchen



Dimensions: 19'5" x 14'9"  
Area: 286 sq. ft  
Counted as living area: Yes

Heated: Yes  
Finished: Yes  
Enclosed: Yes  
Contiguous: Yes  
Permitted: Yes  
Wet space: No  
Addition: No  
Conversion: No

## 10 Floor 1 - Hall



Dimensions: 3'1" x 5'1"  
Area: 16 sq. ft  
Counted as living area: Yes

Heated: Yes  
Finished: Yes  
Enclosed: Yes  
Contiguous: Yes  
Permitted: Yes  
Wet space: No  
Addition: No  
Conversion: No

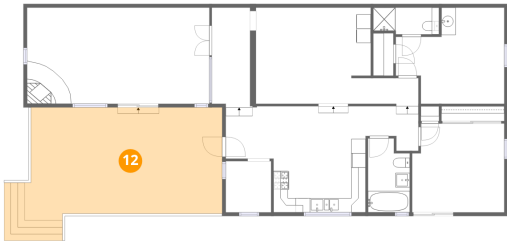
## 11 Floor 1 - Bedroom



Dimensions: 12'10" x 12'4"  
Area: 158 sq. ft  
Counted as living area: Yes

Heated: Yes  
Finished: Yes  
Enclosed: Yes  
Contiguous: Yes  
Permitted: Yes  
Wet space: No  
Addition: No  
Conversion: No

12 Floor 1 - Porch



Dimensions: 26'6" x 14'8"  
Area: 389 sq. ft  
Counted as living area: No

Heated: No  
Finished: No  
Enclosed: No  
Contiguous: Yes  
Permitted: Yes  
Wet space: No  
Addition: No  
Conversion: No

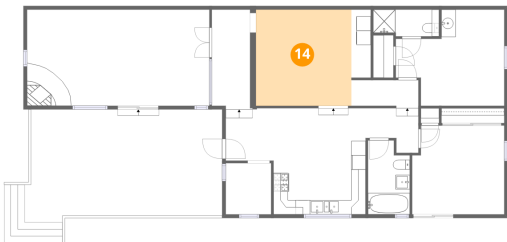
13 Floor 1 - Room



Dimensions: 6'3" x 7'1"  
Area: 44 sq. ft  
Counted as living area: Yes

Heated: Yes  
Finished: Yes  
Enclosed: Yes  
Contiguous: Yes  
Permitted: Yes  
Wet space: No  
Addition: No  
Conversion: No

14 Floor 1 - Dining Area



Dimensions: 13'3" x 13'4"  
Area: 177 sq. ft  
Counted as living area: Yes

Heated: Yes  
Finished: Yes  
Enclosed: Yes  
Contiguous: Yes  
Permitted: Yes  
Wet space: No  
Addition: No  
Conversion: No