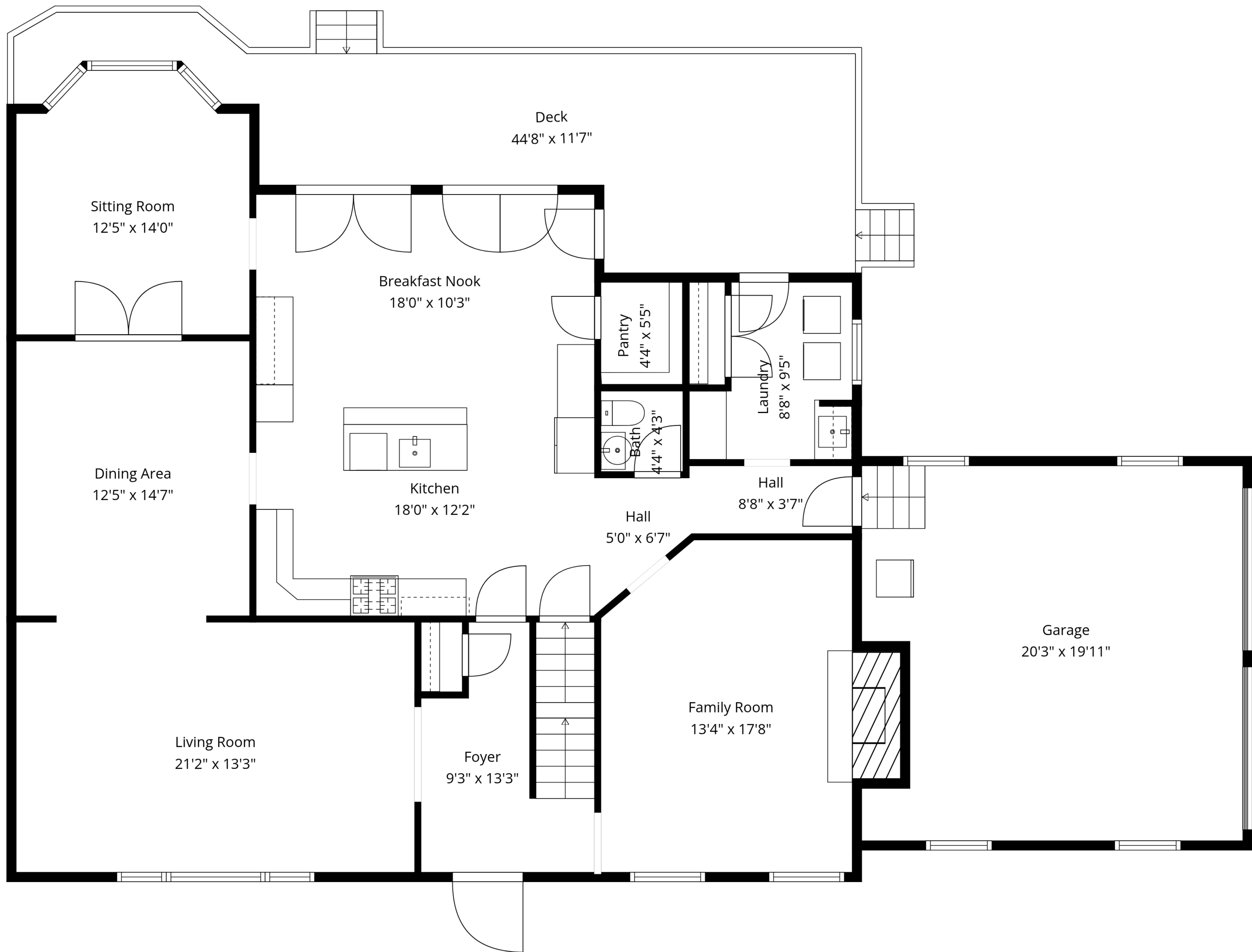


TOTAL: 3903 sq. ft

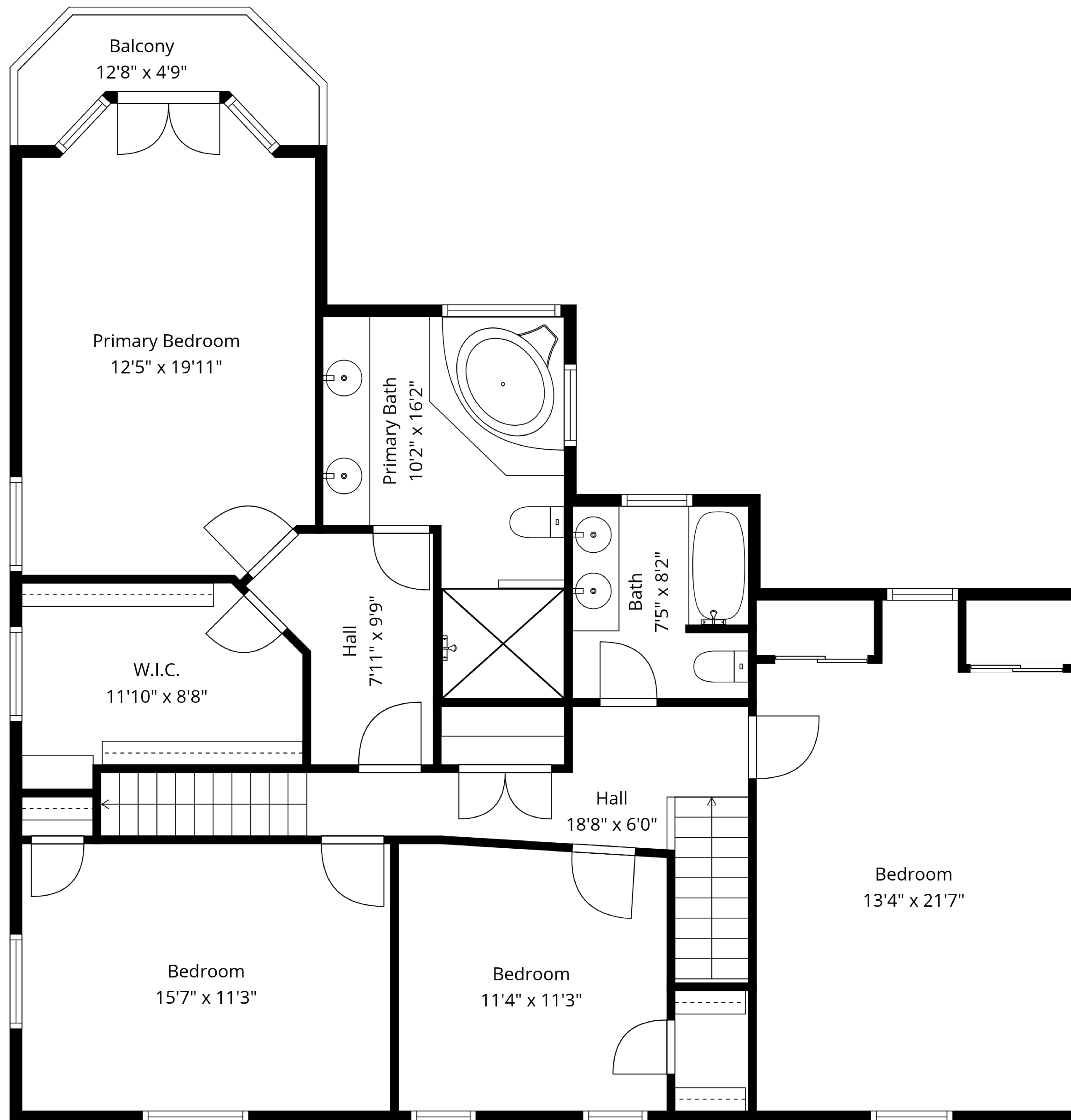
Basement: 422 sq. ft, 1st floor: 1606 sq. ft, 2nd floor: 1362 sq. ft, 3rd floor: 513 sq. ft
 EXCLUDED AREAS: BASEMENT: 722 sq. ft, STORAGE: 209 sq. ft, GARAGE: 383 sq. ft,
 DECK: 340 sq. ft, FIREPLACE: 20 sq. ft, BALCONY: 46 sq. ft,
 LOW CEILING: 118 sq. ft, WALLS: 344 sq. ft



TOTAL: 3903 sq. ft

Basement: 422 sq. ft, 1st floor: 1606 sq. ft, 2nd floor: 1362 sq. ft, 3rd floor: 513 sq. ft
 EXCLUDED AREAS: BASEMENT: 722 sq. ft, STORAGE: 209 sq. ft, GARAGE: 383 sq. ft,
 DECK: 340 sq. ft, FIREPLACE: 20 sq. ft, BALCONY: 46 sq. ft,
 LOW CEILING: 118 sq. ft, WALLS: 344 sq. ft

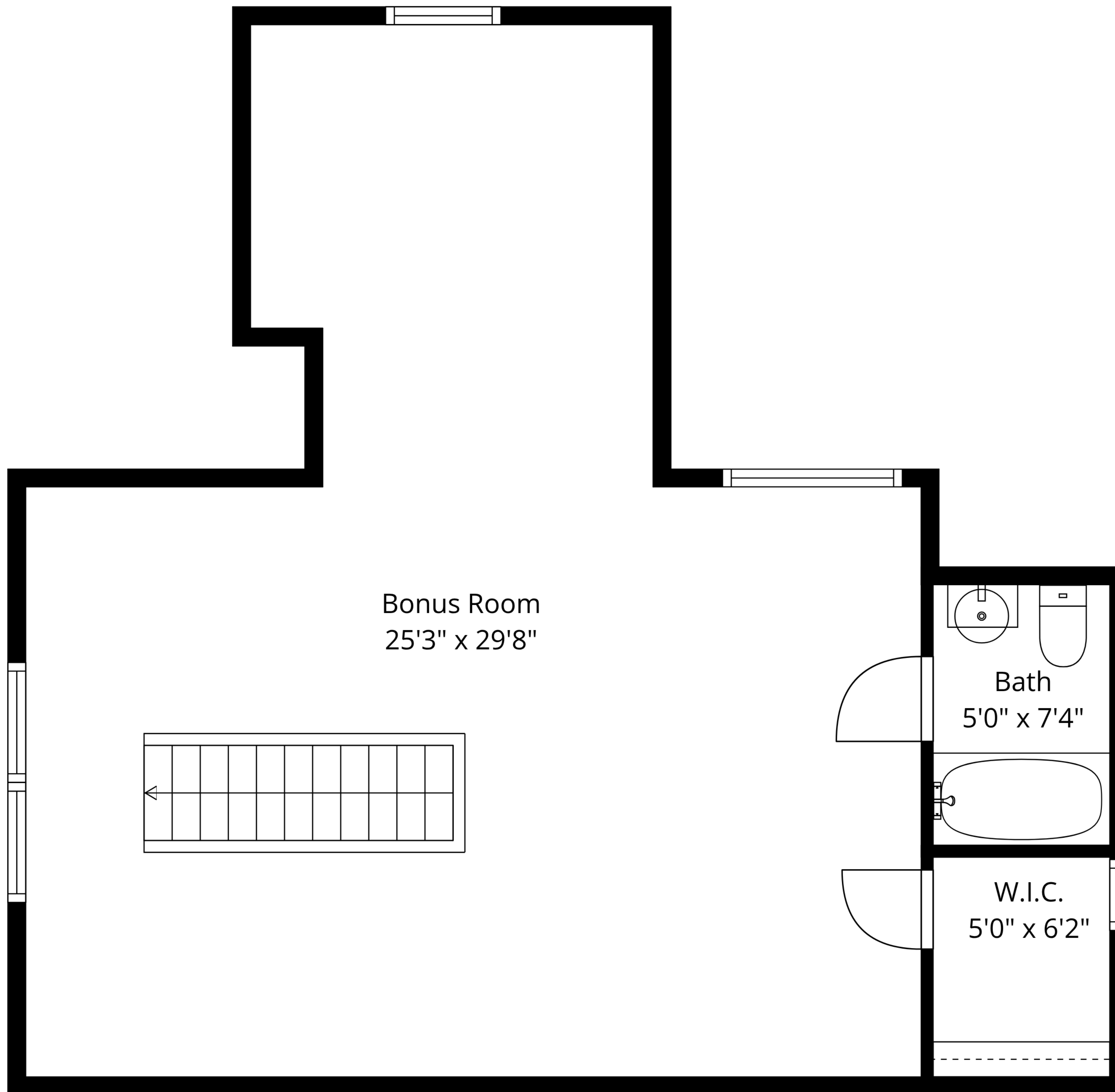
Measurements Are Approximate - Deemed Highly Reliable But Not Guaranteed



TOTAL: 3903 sq. ft

Basement: 422 sq. ft, 1st floor: 1606 sq. ft, 2nd floor: 1362 sq. ft, 3rd floor: 513 sq. ft
 EXCLUDED AREAS: BASEMENT: 722 sq. ft, STORAGE: 209 sq. ft, GARAGE: 383 sq. ft,
 DECK: 340 sq. ft, FIREPLACE: 20 sq. ft, BALCONY: 46 sq. ft,
 LOW CEILING: 118 sq. ft, WALLS: 344 sq. ft

Measurements Are Approximate - Deemed Highly Reliable But Not Guaranteed



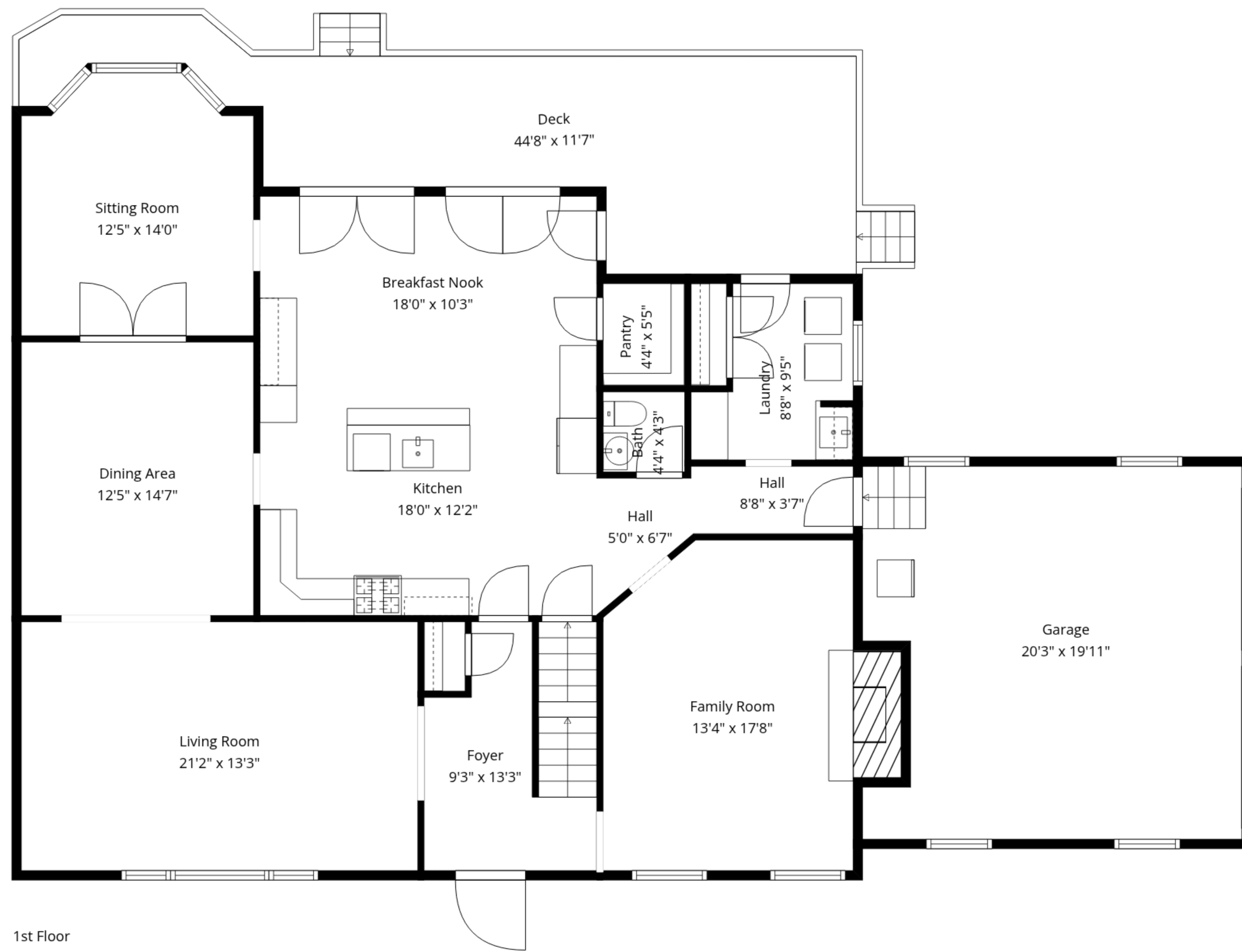
Bonus Room
25'3" x 29'8"

Bath
5'0" x 7'4"

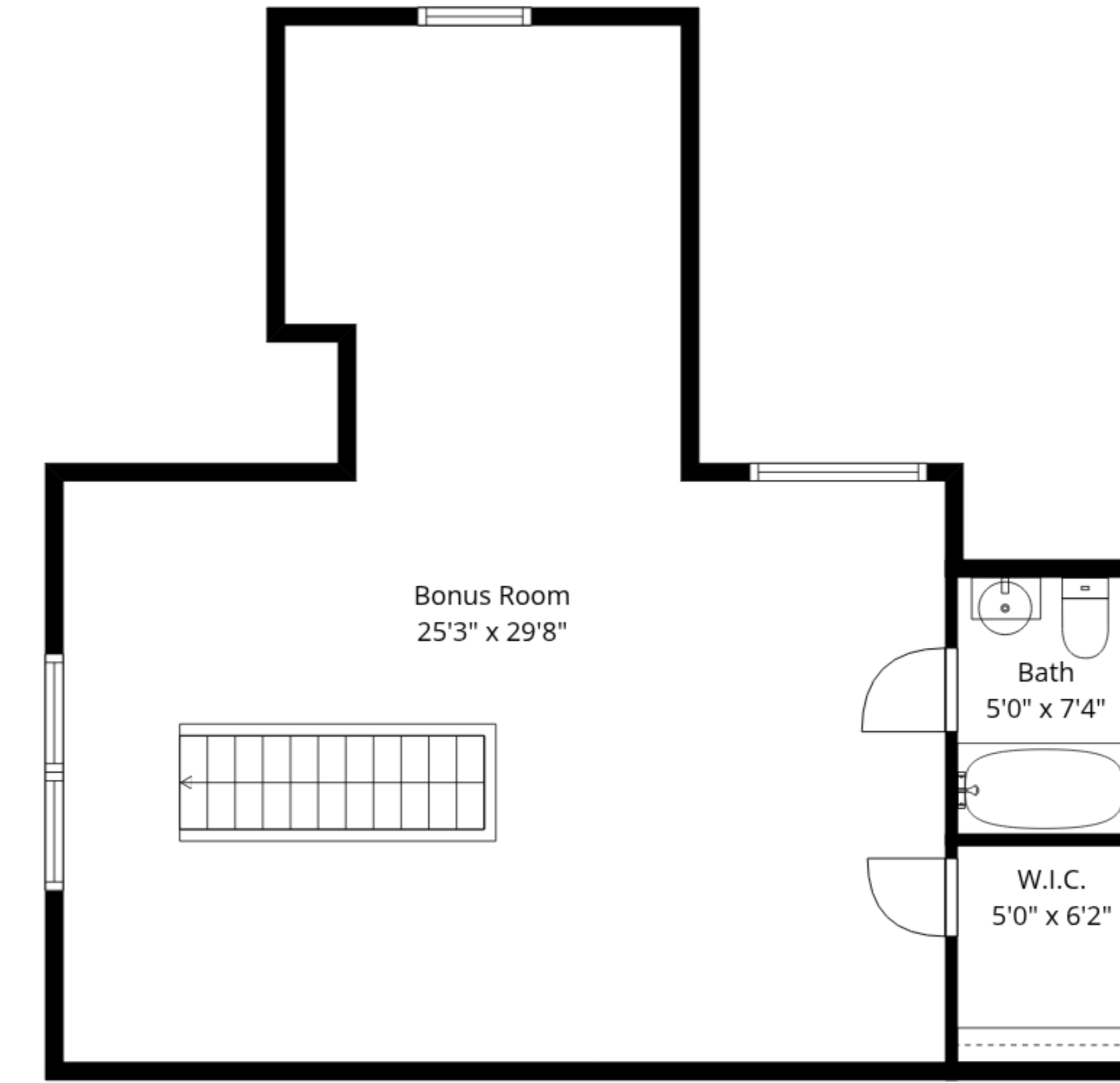
W.I.C.
5'0" x 6'2"

TOTAL: 3903 sq. ft

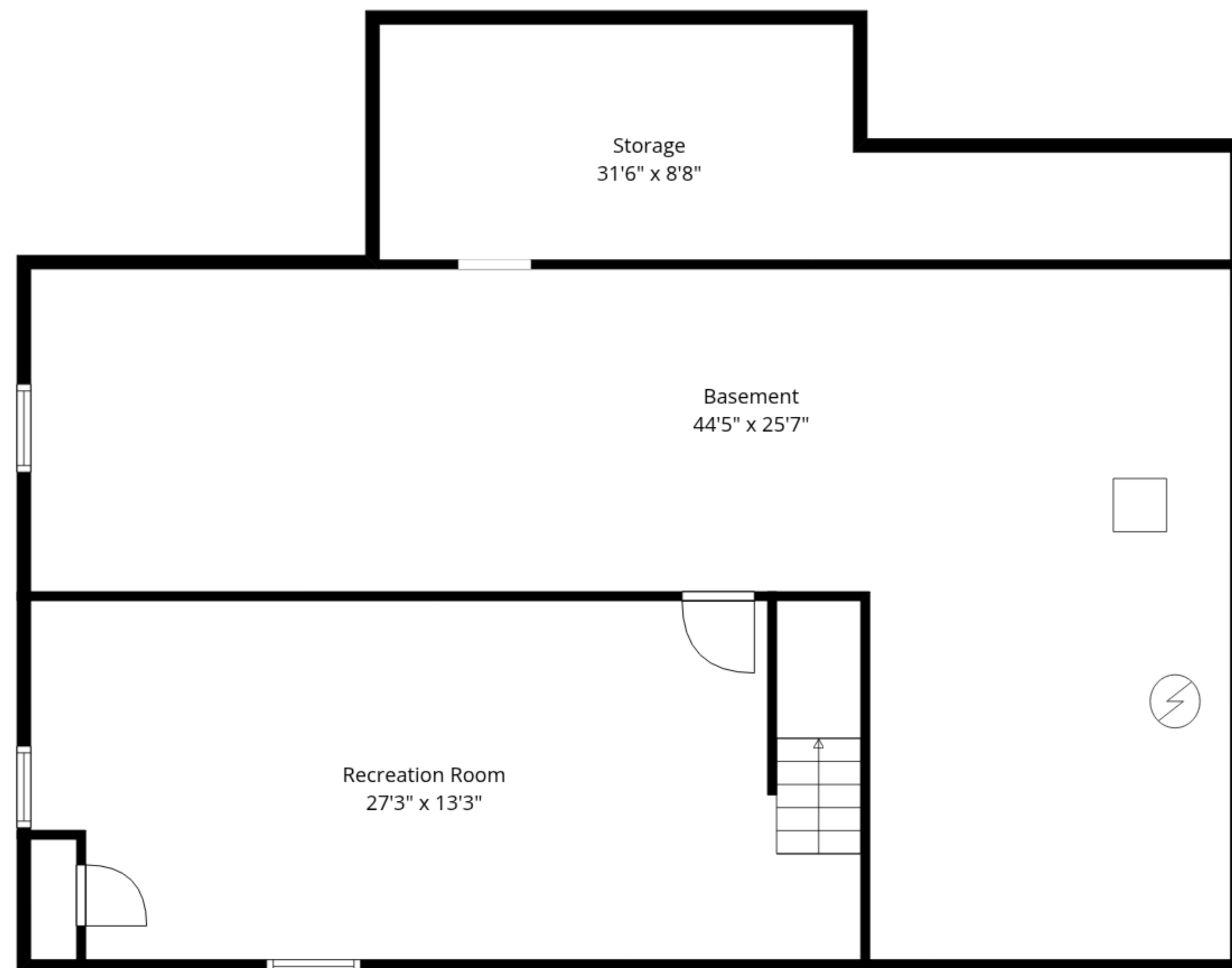
Basement: 422 sq. ft, 1st floor: 1606 sq. ft, 2nd floor: 1362 sq. ft, 3rd floor: 513 sq. ft
EXCLUDED AREAS: BASEMENT: 722 sq. ft, STORAGE: 209 sq. ft, GARAGE: 383 sq. ft,
DECK: 340 sq. ft, FIREPLACE: 20 sq. ft, BALCONY: 46 sq. ft,
LOW CEILING: 118 sq. ft, WALLS: 344 sq. ft



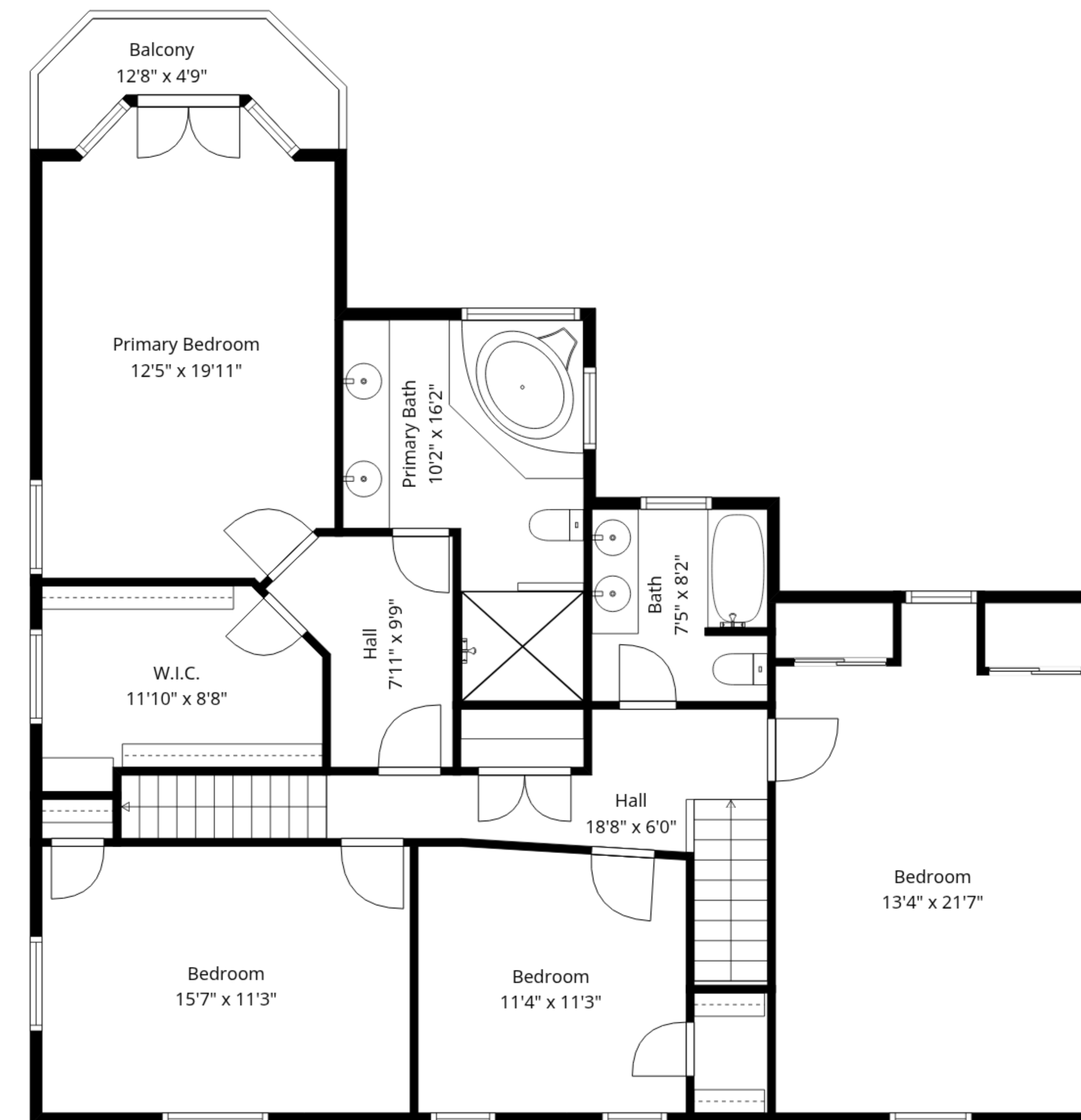
1st Floor



3rd Floor



Basement



2nd Floor

TOTAL: 3903 sq. ft

Basement: 422 sq. ft, 1st floor: 1606 sq. ft, 2nd floor: 1362 sq. ft, 3rd floor: 513 sq. ft
 EXCLUDED AREAS: BASEMENT: 722 sq. ft, STORAGE: 209 sq. ft, GARAGE: 383 sq. ft,
 DECK: 340 sq. ft, FIREPLACE: 20 sq. ft, BALCONY: 46 sq. ft,
 LOW CEILING: 118 sq. ft, WALLS: 344 sq. ft