

Home data report

1339 W Marquette Woods Rd, St Joseph, MI, US



Total Area: 1680 sq. ft

Basement: 503 sq. ft, 1st Floor: 1177 sq. ft

Excluded: Basement 577 sq. ft, Screened porch 111 sq. ft, Storage 77 sq. ft, Garage 511 sq. ft, Patio 104 sq. ft, Walls: 199 sq. ft

Property summary

 **2** Floors

 **2** Bedrooms

 **1** Bathrooms

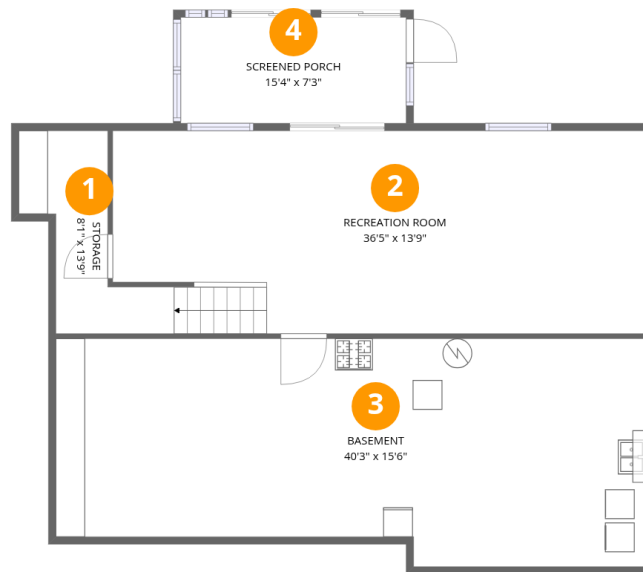
Home data report

1339 W Marquette Woods Rd, St Joseph, MI, US

 **1**
Half baths

 **1**
Garages

1339 W Marquette Woods Rd, St Joseph, MI, US



Room dimensions

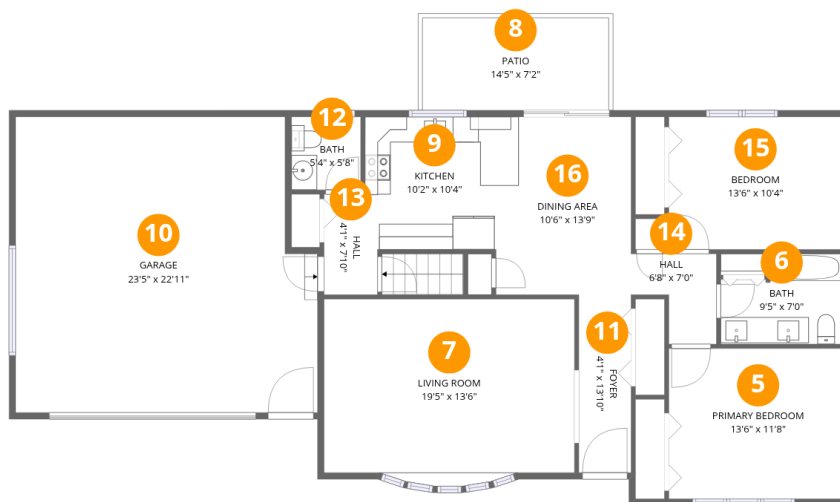
Floor 1 Below grade

Total: 503 sqft

Excluded: 765 sqft

#		Dimensions	sqft	Counted as living area
1	Storage	8'1" x 13'9"	77 sq. ft	No
2	Recreation Room	36'5" x 13'9"	487 sq. ft	Yes
3	Basement	40'3" x 15'6"	575 sq. ft	No
4	Screened Porch	15'4" x 7'3"	111 sq. ft	No

1339 W Marquette Woods Rd, St Joseph, MI, US



Room dimensions

Floor 2

Total: 1177sqft Excluded: 615sqft

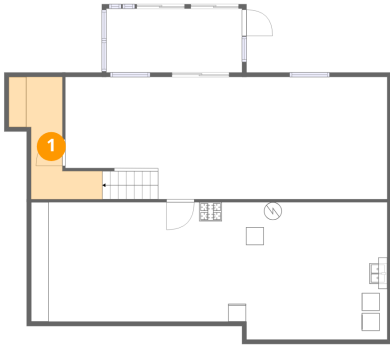
#		Dimensions	sqft	Counted as living area
5	Primary Bedroom	13'6" x 11'8"	157 sq. ft	Yes
6	Bath	9'5" x 7'0"	59 sq. ft	Yes
7	Living Room	19'5" x 13'6"	270 sq. ft	Yes
8	Patio	14'5" x 7'2"	104 sq. ft	No
9	Kitchen	10'2" x 10'4"	103 sq. ft	Yes
10	Garage	23'5" x 22'11"	511 sq. ft	No
11	Foyer	4'1" x 13'10"	56 sq. ft	Yes
12	Bath	5'4" x 5'8"	30 sq. ft	Yes
13	Hall	4'1" x 7'10"	30 sq. ft	Yes
14	Hall	6'8" x 7'0"	35 sq. ft	Yes
15	Bedroom	13'6" x 10'4"	139 sq. ft	Yes

Home data report

1339 W Marquette Woods Rd, St Joseph, MI, US

#		Dimensions	sqft	Counted as living area
16	Dining Area	10'6" x 13'9"	145 sq. ft	Yes

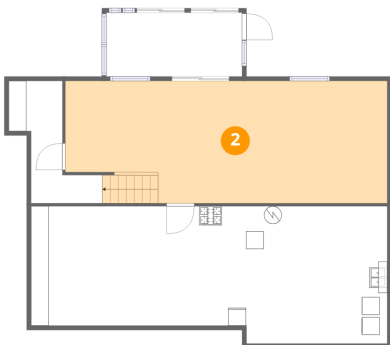
1 Floor 1 - Storage



Dimensions: 8'1" x 13'9"
Area: 77 sq. ft
Counted as living area: No

Heated: No
Finished: No
Enclosed: No
Contiguous: Yes
Permitted: Yes
Wet space: No
Addition: No
Conversion: No

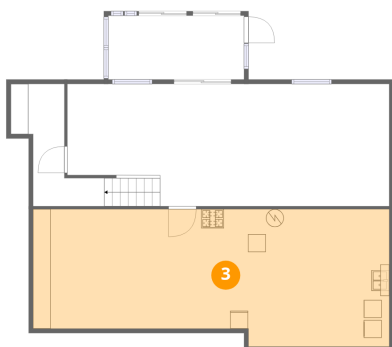
2 Floor 1 - Recreation Room



Dimensions: 36'5" x 13'9"
Area: 487 sq. ft
Counted as living area: No

Heated: Yes
Finished: Yes
Enclosed: Yes
Contiguous: No
Permitted: Yes
Wet space: No
Addition: No
Conversion: No

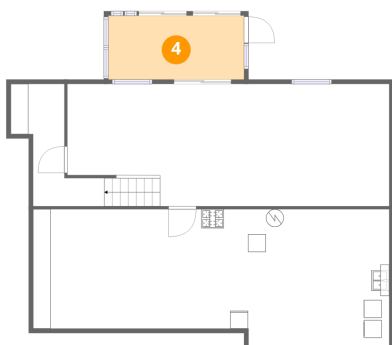
3 Floor 1 - Basement



Dimensions: 40'3" x 15'6"
Area: 575 sq. ft
Counted as living area: No

Heated: Yes
Finished: No
Enclosed: Yes
Contiguous: Yes
Permitted: Yes
Wet space: No
Addition: No
Conversion: No

4 Floor 1 - Screened Porch



Dimensions: 15'4" x 7'3"
Area: 111 sq. ft
Counted as living area: No

Heated: No
Finished: No
Enclosed: No
Contiguous: Yes
Permitted: Yes
Wet space: No
Addition: No
Conversion: No

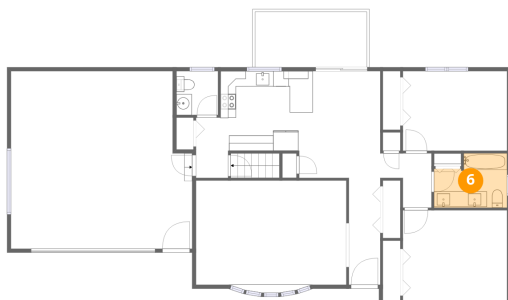
5 Floor 2 - Primary Bedroom



Dimensions: 13'6" x 11'8"
Area: 157 sq. ft
Counted as living area: Yes

Heated: Yes
Finished: Yes
Enclosed: Yes
Contiguous: Yes
Permitted: Yes
Wet space: No
Addition: No
Conversion: No

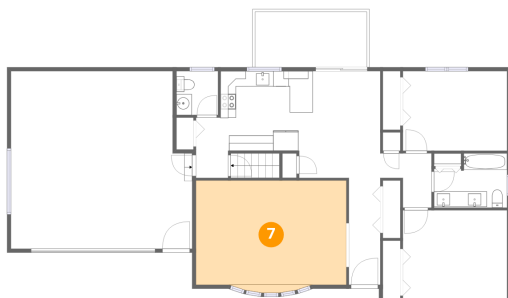
6 Floor 2 - Bath



Dimensions: 9'5" x 7'0"
Area: 59 sq. ft
Counted as living area: Yes

Heated: Yes
Finished: Yes
Enclosed: Yes
Contiguous: Yes
Permitted: Yes
Wet space: Yes
Addition: No
Conversion: No

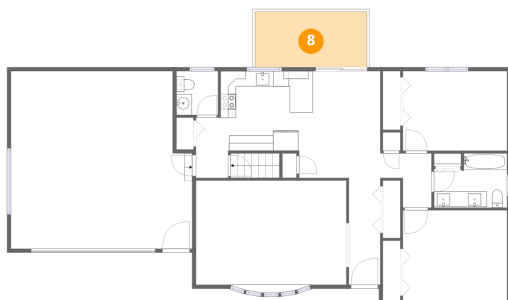
7 Floor 2 - Living Room



Dimensions: 19'5" x 13'6"
Area: 270 sq. ft
Counted as living area: Yes

Heated: Yes
Finished: Yes
Enclosed: Yes
Contiguous: Yes
Permitted: Yes
Wet space: No
Addition: No
Conversion: No

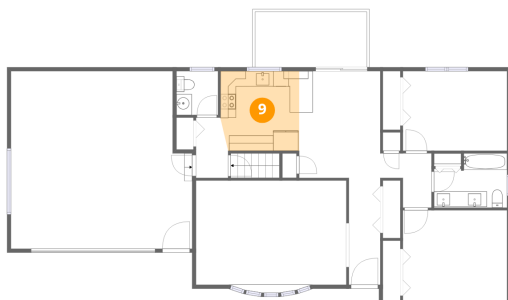
8 Floor 2 - Patio



Dimensions: 14'5" x 7'2"
Area: 104 sq. ft
Counted as living area: No

Heated: No
Finished: No
Enclosed: No
Contiguous: Yes
Permitted: Yes
Wet space: No
Addition: No
Conversion: No

9 Floor 2 - Kitchen



Dimensions: 10'2" x 10'4"
Area: 103 sq. ft
Counted as living area: Yes

Heated: Yes
Finished: Yes
Enclosed: Yes
Contiguous: Yes
Permitted: Yes
Wet space: No
Addition: No
Conversion: No

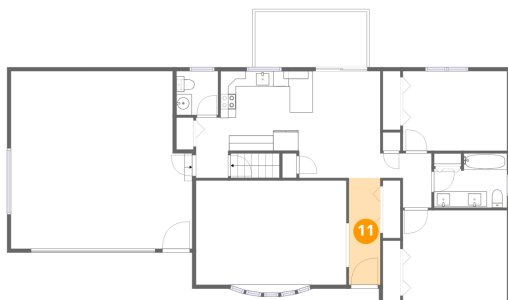
10 Floor 2 - Garage



Dimensions: 23'5" x 22'11"
Area: 511 sq. ft
Counted as living area: No

Heated: No
Finished: No
Enclosed: Yes
Contiguous: Yes
Permitted: Yes
Wet space: No
Addition: No
Conversion: No

11 Floor 2 - Foyer



Dimensions: 4'1" x 13'10"
Area: 56 sq. ft
Counted as living area: Yes

Heated: Yes
Finished: Yes
Enclosed: Yes
Contiguous: Yes
Permitted: Yes
Wet space: No
Addition: No
Conversion: No

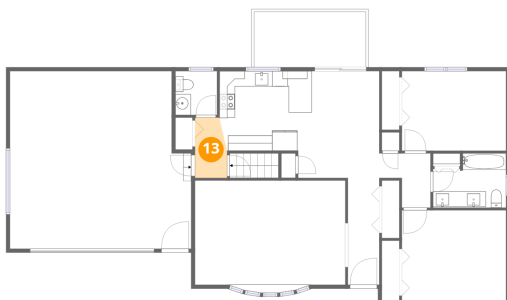
12 Floor 2 - Bath



Dimensions: 5'4" x 5'8"
Area: 30 sq. ft
Counted as living area: Yes

Heated: Yes
Finished: Yes
Enclosed: Yes
Contiguous: Yes
Permitted: Yes
Wet space: Yes
Addition: No
Conversion: No

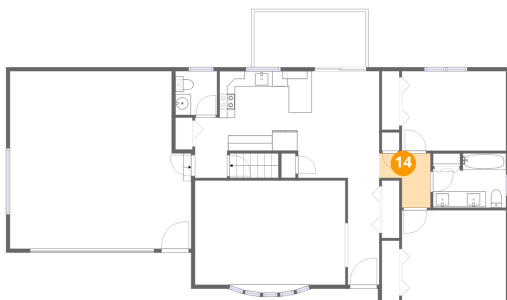
13 Floor 2 - Hall



Dimensions: 4'1" x 7'10"
Area: 30 sq. ft
Counted as living area: Yes

Heated: Yes
Finished: Yes
Enclosed: Yes
Contiguous: Yes
Permitted: Yes
Wet space: No
Addition: No
Conversion: No

14 Floor 2 - Hall



Dimensions: 6'8" x 7'0"
Area: 35 sq. ft
Counted as living area: Yes

Heated: Yes
Finished: Yes
Enclosed: Yes
Contiguous: Yes
Permitted: Yes
Wet space: No
Addition: No
Conversion: No

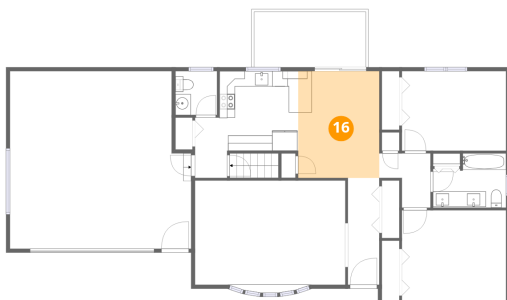
15 Floor 2 - Bedroom



Dimensions: 13'6" x 10'4"
Area: 139 sq. ft
Counted as living area: Yes

Heated: Yes
Finished: Yes
Enclosed: Yes
Contiguous: Yes
Permitted: Yes
Wet space: No
Addition: No
Conversion: No

16 Floor 2 - Dining Area



Dimensions: 10'6" x 13'9"
Area: 145 sq. ft
Counted as living area: Yes

Heated: Yes
Finished: Yes
Enclosed: Yes
Contiguous: Yes
Permitted: Yes
Wet space: No
Addition: No
Conversion: No