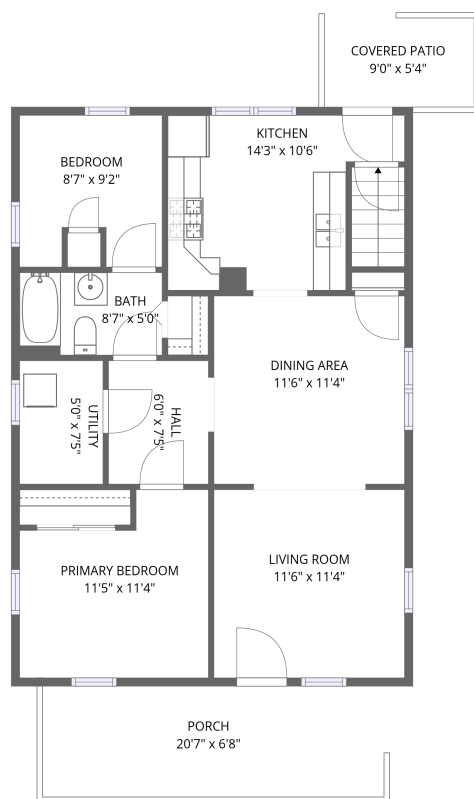


Home data report

1003 S Shelby St, Shelbyville, IN, US



Basement

Total Area: 750 sq. ft

Basement: 750 sq. ft

Excluded: Utility 37 sq. ft, Covered patio 48 sq. ft, Porch 138 sq. ft, Walls: 58 sq. ft

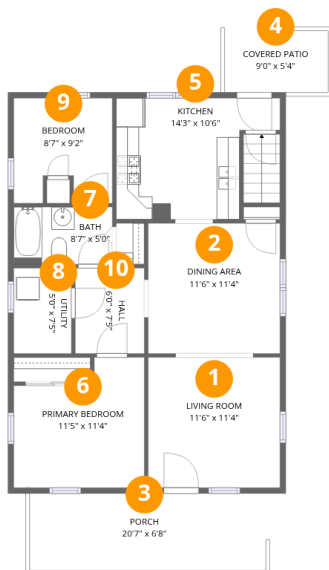
Property summary

 **1** Floors

 **2** Bedrooms

 **1** Bathrooms

1003 S Shelby St, Shelbyville, IN, US



Room dimensions

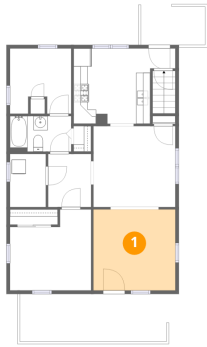
Floor 1 Below grade

Total:750sqft

Excluded: 223sqft

#		Dimensions	sqft	Counted as living area
1	Living Room	11'6" x 11'4"	130 sq. ft	Yes
2	Dining Area	11'6" x 11'4"	130 sq. ft	Yes
3	Porch	20'7" x 6'8"	138 sq. ft	No
4	Covered Patio	9'0" x 5'4"	48 sq. ft	No
5	Kitchen	14'3" x 10'6"	123 sq. ft	Yes
6	Primary Bedroom	11'5" x 11'4"	112 sq. ft	Yes
7	Bath	8'7" x 5'0"	43 sq. ft	Yes
8	Utility	5'0" x 7'5"	37 sq. ft	No
9	Bedroom	8'7" x 9'2"	72 sq. ft	Yes
10	Hall	6'0" x 7'5"	45 sq. ft	Yes

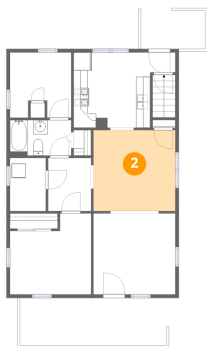
1 Floor 1 - Living Room



Dimensions: 11'6" x 11'4"
Area: 130 sq. ft
Counted as living area: Yes

Heated: Yes
Finished: Yes
Enclosed: Yes
Contiguous: Yes
Permitted: Yes
Wet space: No
Addition: No
Conversion: No

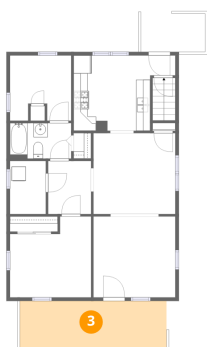
2 Floor 1 - Dining Area



Dimensions: 11'6" x 11'4"
Area: 130 sq. ft
Counted as living area: Yes

Heated: Yes
Finished: Yes
Enclosed: Yes
Contiguous: Yes
Permitted: Yes
Wet space: No
Addition: No
Conversion: No

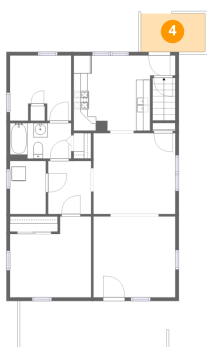
3 Floor 1 - Porch



Dimensions: 20'7" x 6'8"
Area: 138 sq. ft
Counted as living area: No

Heated: No
Finished: No
Enclosed: No
Contiguous: Yes
Permitted: Yes
Wet space: No
Addition: No
Conversion: No

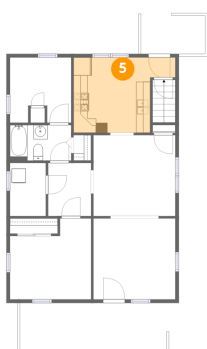
4 Floor 1 - Covered Patio



Dimensions: 9'0" x 5'4"
Area: 48 sq. ft
Counted as living area: No

Heated: No
Finished: No
Enclosed: No
Contiguous: Yes
Permitted: Yes
Wet space: No
Addition: No
Conversion: No

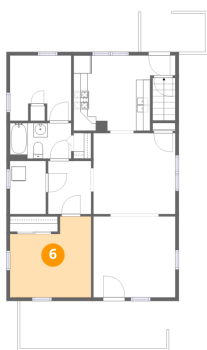
5 Floor 1 - Kitchen



Dimensions: 14'3" x 10'6"
Area: 123 sq. ft
Counted as living area: Yes

Heated: Yes
Finished: Yes
Enclosed: Yes
Contiguous: Yes
Permitted: Yes
Wet space: No
Addition: No
Conversion: No

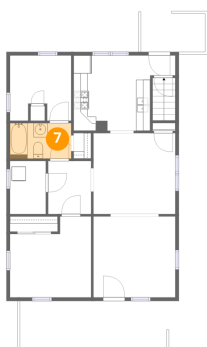
6 Floor 1 - Primary Bedroom



Dimensions: 11'5" x 11'4"
Area: 112 sq. ft
Counted as living area: Yes

Heated: Yes
Finished: Yes
Enclosed: Yes
Contiguous: Yes
Permitted: Yes
Wet space: No
Addition: No
Conversion: No

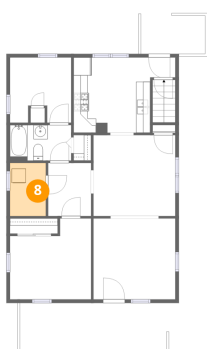
7 Floor 1 - Bath



Dimensions: 8'7" x 5'0"
Area: 43 sq. ft
Counted as living area: Yes

Heated: Yes
Finished: Yes
Enclosed: Yes
Contiguous: Yes
Permitted: Yes
Wet space: Yes
Addition: No
Conversion: No

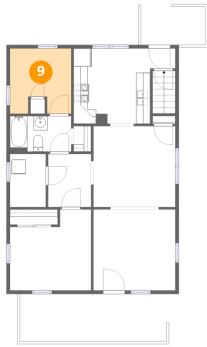
8 Floor 1 - Utility



Dimensions: 5'0" x 7'5"
Area: 37 sq. ft
Counted as living area: No

Heated: Yes
Finished: No
Enclosed: Yes
Contiguous: Yes
Permitted: Yes
Wet space: No
Addition: No
Conversion: No

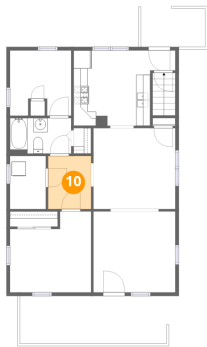
9 Floor 1 - Bedroom



Dimensions: 8'7" x 9'2"
Area: 72 sq. ft
Counted as living area: Yes

Heated: Yes
Finished: Yes
Enclosed: Yes
Contiguous: Yes
Permitted: Yes
Wet space: No
Addition: No
Conversion: No

10 Floor 1 - Hall



Dimensions: 6'0" x 7'5"
Area: 45 sq. ft
Counted as living area: Yes

Heated: Yes
Finished: Yes
Enclosed: Yes
Contiguous: Yes
Permitted: Yes
Wet space: No
Addition: No
Conversion: No