

Home data report

206 Brookledge Drive, Vinton, Bedford County, Virginia, United States, 24179



Total Area: 2845 sq. ft

Basement: 1183 sq. ft, 1st Floor: 1662 sq. ft

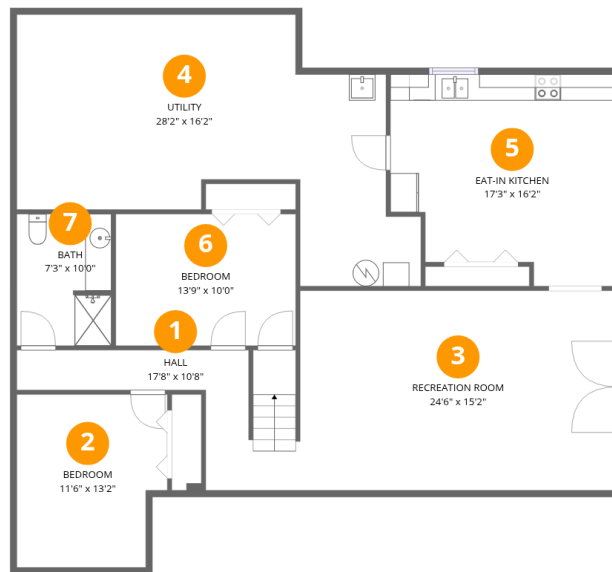
Excluded: Utility 422 sq. ft, Garage 546 sq. ft, Screened porch 225 sq. ft, Porch 63 sq. ft, Fireplace 9 sq. ft, Walls: 231 sq. ft

Property summary



Home data report

206 Brookledge Drive, Vinton, Bedford County, Virginia, United States, 24179



Room dimensions

Floor 1 Below grade

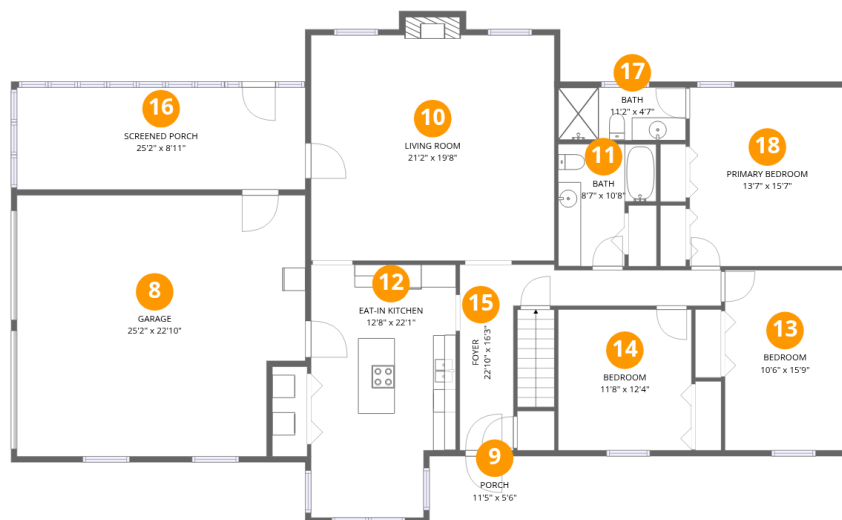
Total:1183sqft

Excluded: 422sqft

#		Dimensions	sqft	Counted as living area
1	Hall	17'8" x 10'8"	115 sq. ft	Yes
2	Bedroom	11'6" x 13'2"	142 sq. ft	Yes
3	Recreation Room	24'6" x 15'2"	369 sq. ft	Yes
4	Utility	28'2" x 16'2"	422 sq. ft	No
5	Eat-in Kitchen	17'3" x 16'2"	249 sq. ft	Yes
6	Bedroom	13'9" x 10'0"	138 sq. ft	Yes
7	Bath	7'3" x 10'0"	71 sq. ft	Yes

Home data report

206 Brookledge Drive, Vinton, Bedford County, Virginia, United States, 24179



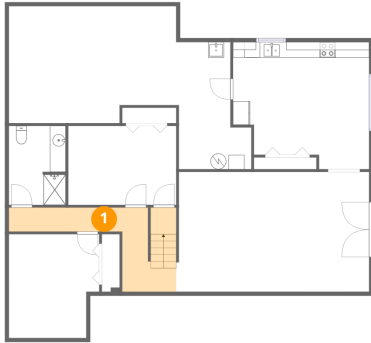
Room dimensions

Floor 2

Total:1662sqft Excluded: 843sqft

#		Dimensions	sqft	Counted as living area
8	Garage	25'2" x 22'10"	546 sq. ft	No
9	Porch	11'5" x 5'6"	63 sq. ft	No
10	Living Room	21'2" x 19'8"	426 sq. ft	Yes
11	Bath	8'7" x 10'8"	76 sq. ft	Yes
12	Eat-in Kitchen	12'8" x 22'1"	263 sq. ft	Yes
13	Bedroom	10'6" x 15'9"	165 sq. ft	Yes
14	Bedroom	11'8" x 12'4"	143 sq. ft	Yes
15	Foyer	22'10" x 16'3"	134 sq. ft	Yes
16	Screened Porch	25'2" x 8'11"	225 sq. ft	No
17	Bath	11'2" x 4'7"	52 sq. ft	Yes
18	Primary Bedroom	13'7" x 15'7"	212 sq. ft	Yes

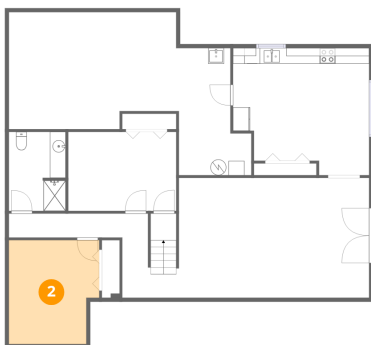
1 Floor 1 - Hall



Dimensions: 17'8" x 10'8"
Area: 115 sq. ft
Counted as living area: Yes

Heated: Yes
Finished: Yes
Enclosed: Yes
Contiguous: Yes
Permitted: Yes
Wet space: No
Addition: No
Conversion: No

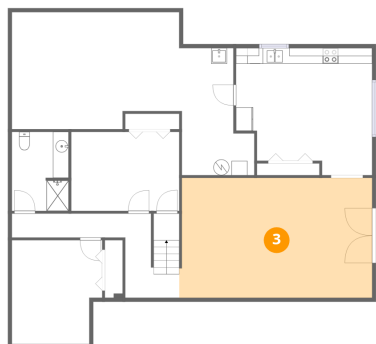
2 Floor 1 - Bedroom



Dimensions: 11'6" x 13'2"
Area: 142 sq. ft
Counted as living area: Yes

Heated: Yes
Finished: Yes
Enclosed: Yes
Contiguous: Yes
Permitted: Yes
Wet space: No
Addition: No
Conversion: No

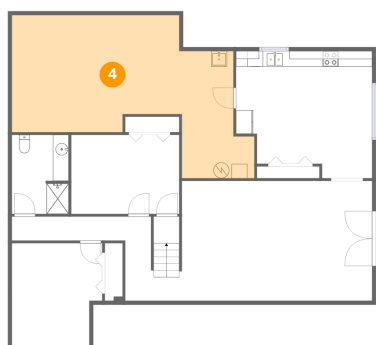
3 Floor 1 - Recreation Room



Dimensions: 24'6" x 15'2"
Area: 369 sq. ft
Counted as living area: Yes

Heated: Yes
Finished: Yes
Enclosed: Yes
Contiguous: Yes
Permitted: Yes
Wet space: No
Addition: No
Conversion: No

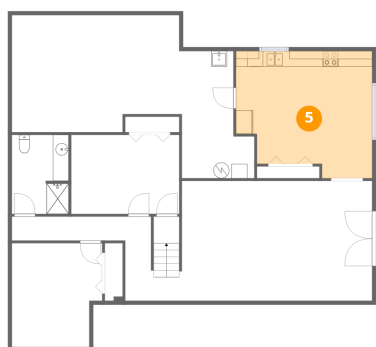
4 Floor 1 - Utility



Dimensions: 28'2" x 16'2"
Area: 422 sq. ft
Counted as living area: No

Heated: Yes
Finished: No
Enclosed: Yes
Contiguous: Yes
Permitted: Yes
Wet space: No
Addition: No
Conversion: No

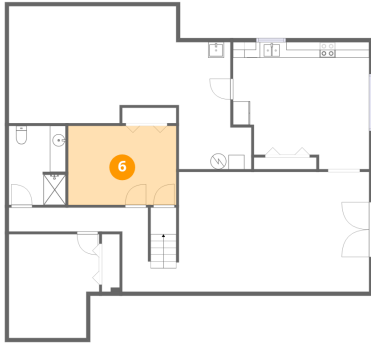
5 Floor 1 - Eat-in Kitchen



Dimensions: 17'3" x 16'2"
Area: 249 sq. ft
Counted as living area: Yes

Heated: Yes
Finished: Yes
Enclosed: Yes
Contiguous: Yes
Permitted: Yes
Wet space: No
Addition: No
Conversion: No

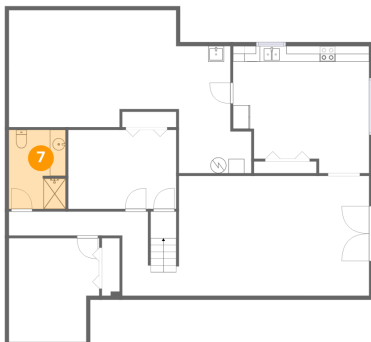
6 Floor 1 - Bedroom



Dimensions: 13'9" x 10'0"
Area: 138 sq. ft
Counted as living area: Yes

Heated: Yes
Finished: Yes
Enclosed: Yes
Contiguous: Yes
Permitted: Yes
Wet space: No
Addition: No
Conversion: No

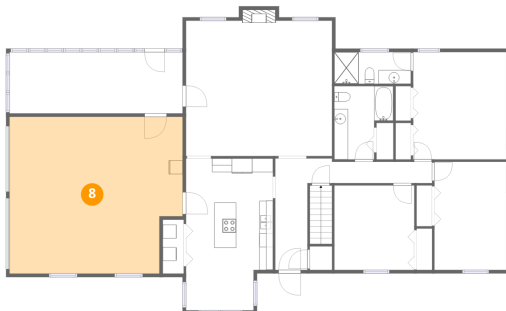
7 Floor 1 - Bath



Dimensions: 7'3" x 10'0"
Area: 71 sq. ft
Counted as living area: Yes

Heated: Yes
Finished: Yes
Enclosed: Yes
Contiguous: Yes
Permitted: Yes
Wet space: Yes
Addition: No
Conversion: No

8 Floor 2 - Garage



Dimensions: 25'2" x 22'10"
Area: 546 sq. ft
Counted as living area: No

Heated: No
Finished: No
Enclosed: Yes
Contiguous: Yes
Permitted: Yes
Wet space: No
Addition: No
Conversion: No

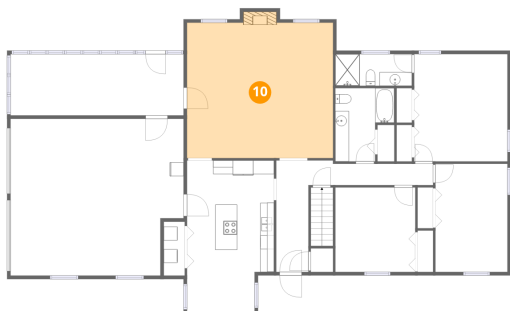
9 Floor 2 - Porch



Dimensions: 11'5" x 5'6"
Area: 63 sq. ft
Counted as living area: No

Heated: No
Finished: No
Enclosed: No
Contiguous: Yes
Permitted: Yes
Wet space: No
Addition: No
Conversion: No

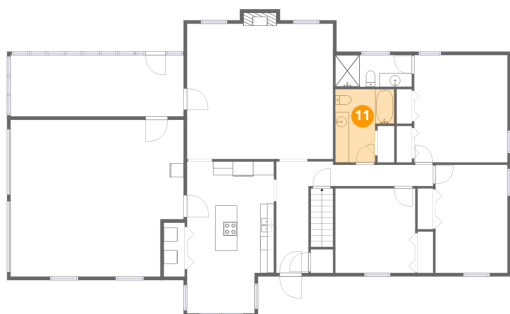
10 Floor 2 - Living Room



Dimensions: 21'2" x 19'8"
Area: 426 sq. ft
Counted as living area: Yes

Heated: Yes
Finished: Yes
Enclosed: Yes
Contiguous: Yes
Permitted: Yes
Wet space: No
Addition: No
Conversion: No

11 Floor 2 - Bath



Dimensions: 8'7" x 10'8"
Area: 76 sq. ft
Counted as living area: Yes

Heated: Yes
Finished: Yes
Enclosed: Yes
Contiguous: Yes
Permitted: Yes
Wet space: Yes
Addition: No
Conversion: No

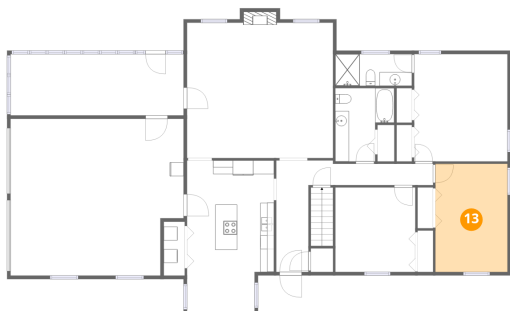
12 Floor 2 - Eat-in Kitchen



Dimensions: 12'8" x 22'1"
Area: 263 sq. ft
Counted as living area: Yes

Heated: Yes
Finished: Yes
Enclosed: Yes
Contiguous: Yes
Permitted: Yes
Wet space: No
Addition: No
Conversion: No

13 Floor 2 - Bedroom



Dimensions: 10'6" x 15'9"
Area: 165 sq. ft
Counted as living area: Yes

Heated: Yes
Finished: Yes
Enclosed: Yes
Contiguous: Yes
Permitted: Yes
Wet space: No
Addition: No
Conversion: No

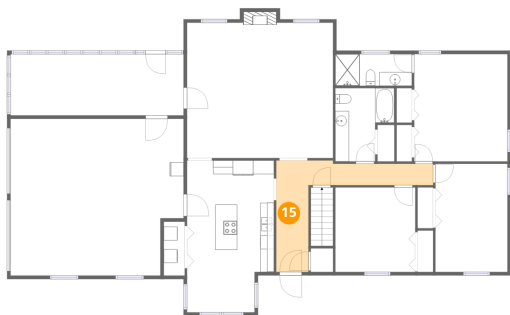
14 Floor 2 - Bedroom



Dimensions: 11'8" x 12'4"
Area: 143 sq. ft
Counted as living area: Yes

Heated: Yes
Finished: Yes
Enclosed: Yes
Contiguous: Yes
Permitted: Yes
Wet space: No
Addition: No
Conversion: No

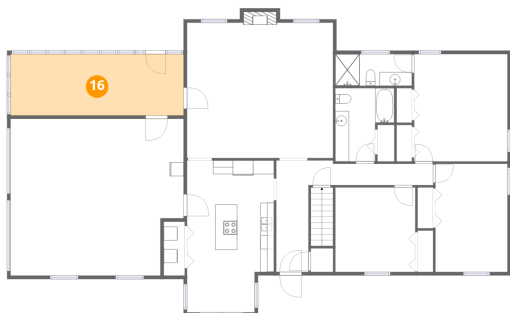
15 Floor 2 - Foyer



Dimensions: 22'10" x 16'3"
Area: 134 sq. ft
Counted as living area: Yes

Heated: Yes
Finished: Yes
Enclosed: Yes
Contiguous: Yes
Permitted: Yes
Wet space: No
Addition: No
Conversion: No

16 Floor 2 - Screened Porch



Dimensions: 25'2" x 8'11"
Area: 225 sq. ft
Counted as living area: No

Heated: No
Finished: No
Enclosed: No
Contiguous: Yes
Permitted: Yes
Wet space: No
Addition: No
Conversion: No

17 Floor 2 - Bath



Dimensions: 11'2" x 4'7"
Area: 52 sq. ft
Counted as living area: Yes

Heated: Yes
Finished: Yes
Enclosed: Yes
Contiguous: Yes
Permitted: Yes
Wet space: Yes
Addition: No
Conversion: No

Home data report

206 Brookledge Drive, Vinton, Bedford County, Virginia, United States, 24179

18 Floor 2 - Primary Bedroom



Dimensions: 13'7" x 15'7"
Area: 212 sq. ft
Counted as living area: Yes

Heated: Yes
Finished: Yes
Enclosed: Yes
Contiguous: Yes
Permitted: Yes
Wet space: No
Addition: No
Conversion: No