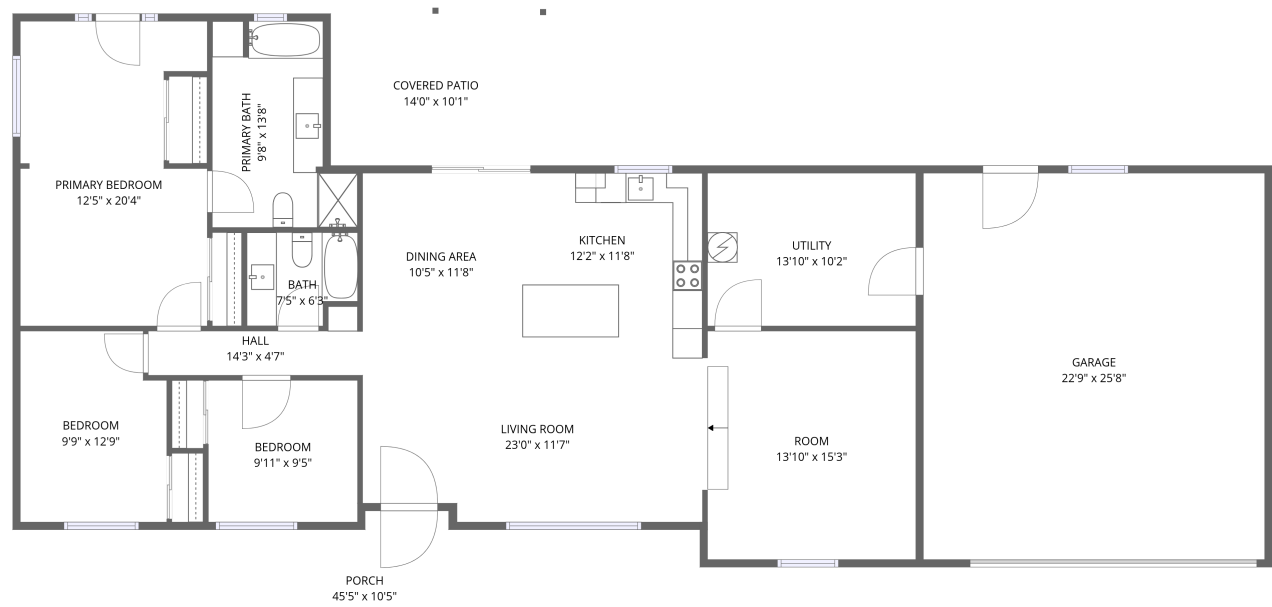


Home data report

1271 Horn Road, Pahrump, Nye County, Nevada, United States, 89048



1st floor

**Total Area: 1618 sq. ft**


1st Floor: 1618 sq. ft


Excluded: Porch 343 sq. ft, Covered patio 142 sq. ft, Garage 585 sq. ft, Walls: 131 sq. ft

Property summary

 **1** Floors

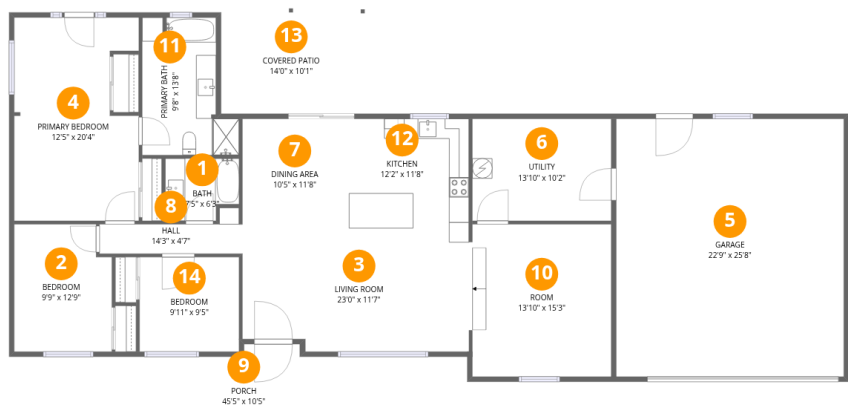
 **3** Bedrooms

 **2** Bathrooms

 **1** Garages

Home data report

1271 Horn Road, Pahrump, Nye County, Nevada, United States, 89048



Room dimensions

Floor 1

Total:1618sqft

Excluded: 1070sqft

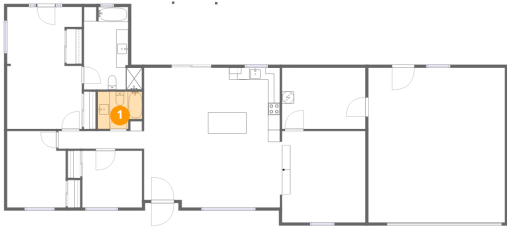
#		Dimensions	sqft	Counted as living area
1	Bath	7'5" x 6'3"	42 sq. ft	Yes
2	Bedroom	9'9" x 12'9"	119 sq. ft	Yes
3	Living Room	23'0" x 11'7"	257 sq. ft	Yes
4	Primary Bedroom	12'5" x 20'4"	234 sq. ft	Yes
5	Garage	22'9" x 25'8"	585 sq. ft	No
6	Utility	13'10" x 10'2"	141 sq. ft	Yes
7	Dining Area	10'5" x 11'8"	122 sq. ft	Yes
8	Hall	14'3" x 4'7"	45 sq. ft	Yes
9	Porch	45'5" x 10'5"	343 sq. ft	No
10	Room	13'10" x 15'3"	211 sq. ft	Yes
11	Primary Bath	9'8" x 13'8"	109 sq. ft	Yes

## Home data report

**1271 Horn Road, Pahrump, Nye County, Nevada, United States,  
89048**

#		Dimensions	sqft	Counted as living area
12	Kitchen	12'2" x 11'8"	142 sq. ft	Yes
13	Covered Patio	14'0" x 10'1"	142 sq. ft	No
14	Bedroom	9'11" x 9'5"	94 sq. ft	Yes

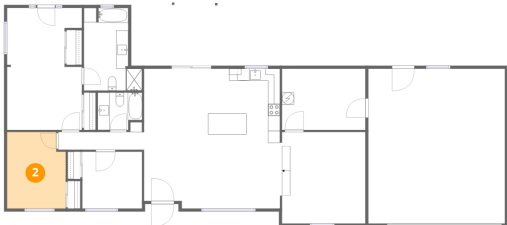
1 Floor 1 - Bath



Dimensions: 7'5" x 6'3"  
Area: 42 sq. ft  
Counted as living area: Yes

Heated: Yes  
Finished: Yes  
Enclosed: Yes  
Contiguous: Yes  
Permitted: Yes  
Wet space: Yes  
Addition: No  
Conversion: No

2 Floor 1 - Bedroom



Dimensions: 9'9" x 12'9"  
Area: 119 sq. ft  
Counted as living area: Yes

Heated: Yes  
Finished: Yes  
Enclosed: Yes  
Contiguous: Yes  
Permitted: Yes  
Wet space: No  
Addition: No  
Conversion: No

1271 Horn Road, Pahrump, Nye County, Nevada, United States,  
89048

### 3 Floor 1 - Living Room

---

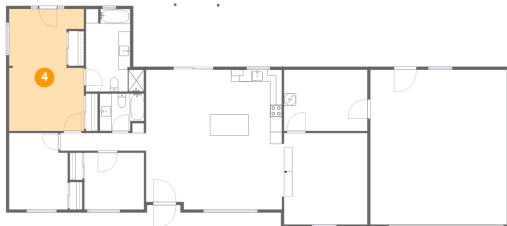


Dimensions: 23'0" x 11'7"  
Area: 257 sq. ft  
Counted as living area: Yes

Heated: Yes  
Finished: Yes  
Enclosed: Yes  
Contiguous: Yes  
Permitted: Yes  
Wet space: No  
Addition: No  
Conversion: No

### 4 Floor 1 - Primary Bedroom

---

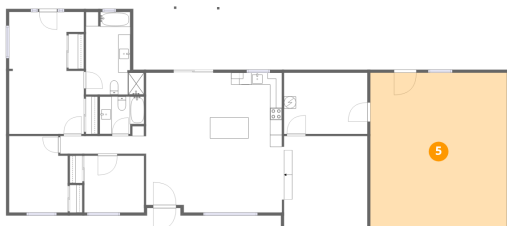


Dimensions: 12'5" x 20'4"  
Area: 234 sq. ft  
Counted as living area: Yes

Heated: Yes  
Finished: Yes  
Enclosed: Yes  
Contiguous: Yes  
Permitted: Yes  
Wet space: No  
Addition: No  
Conversion: No

### 5 Floor 1 - Garage

---



Dimensions: 22'9" x 25'8"  
Area: 585 sq. ft  
Counted as living area: No

Heated: No  
Finished: No  
Enclosed: Yes  
Contiguous: Yes  
Permitted: Yes  
Wet space: No  
Addition: No  
Conversion: No

## Home data report

1271 Horn Road, Pahrump, Nye County, Nevada, United States, 89048

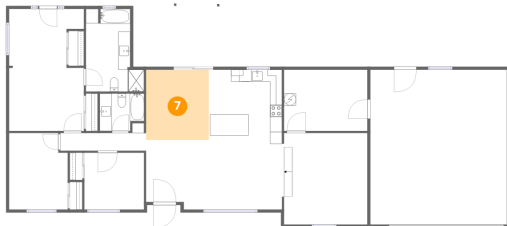
### 6 Floor 1 - Utility



Dimensions: 13'10" x 10'2"  
Area: 141 sq. ft  
Counted as living area: Yes

Heated: Yes  
Finished: Yes  
Enclosed: Yes  
Contiguous: Yes  
Permitted: Yes  
Wet space: No  
Addition: No  
Conversion: No

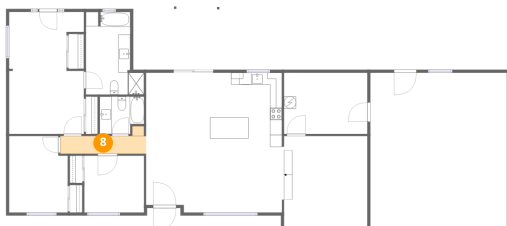
### 7 Floor 1 - Dining Area



Dimensions: 10'5" x 11'8"  
Area: 122 sq. ft  
Counted as living area: Yes

Heated: Yes  
Finished: Yes  
Enclosed: Yes  
Contiguous: Yes  
Permitted: Yes  
Wet space: No  
Addition: No  
Conversion: No

### 8 Floor 1 - Hall



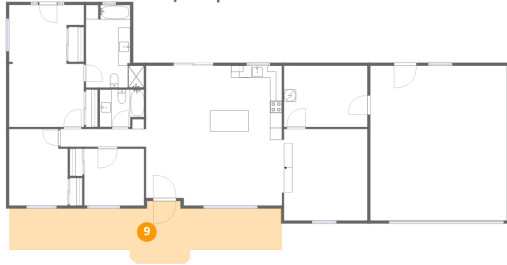
Dimensions: 14'3" x 4'7"  
Area: 45 sq. ft  
Counted as living area: Yes

Heated: Yes  
Finished: Yes  
Enclosed: Yes  
Contiguous: Yes  
Permitted: Yes  
Wet space: No  
Addition: No  
Conversion: No

## Home data report

1271 Horn Road, Pahrump, Nye County, Nevada, United States, 89048

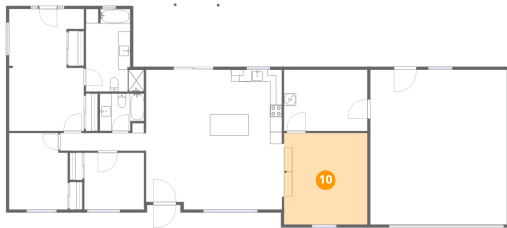
### 9 Floor 1 - Porch



Dimensions: 45'5" x 10'5"  
Area: 343 sq. ft  
Counted as living area: No

Heated: No  
Finished: No  
Enclosed: No  
Contiguous: Yes  
Permitted: Yes  
Wet space: No  
Addition: No  
Conversion: No

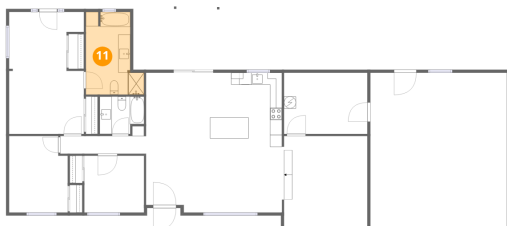
### 10 Floor 1 - Room



Dimensions: 13'10" x 15'3"  
Area: 211 sq. ft  
Counted as living area: Yes

Heated: Yes  
Finished: Yes  
Enclosed: Yes  
Contiguous: Yes  
Permitted: Yes  
Wet space: No  
Addition: No  
Conversion: No

### 11 Floor 1 - Primary Bath



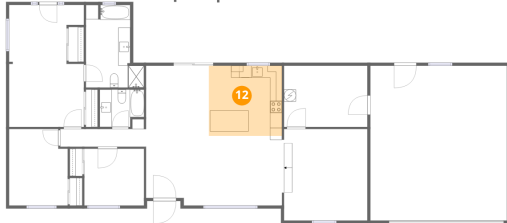
Dimensions: 9'8" x 13'8"  
Area: 109 sq. ft  
Counted as living area: Yes

Heated: Yes  
Finished: Yes  
Enclosed: Yes  
Contiguous: Yes  
Permitted: Yes  
Wet space: Yes  
Addition: No  
Conversion: No

## Home data report

1271 Horn Road, Pahrump, Nye County, Nevada, United States, 89048

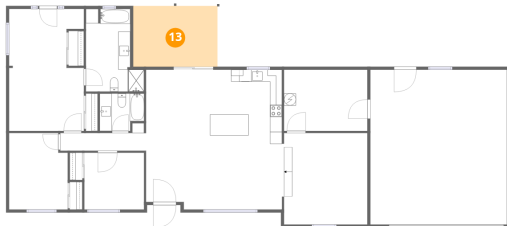
### 12 Floor 1 - Kitchen



Dimensions: 12'2" x 11'8"  
Area: 142 sq. ft  
Counted as living area: Yes

Heated: Yes  
Finished: Yes  
Enclosed: Yes  
Contiguous: Yes  
Permitted: Yes  
Wet space: No  
Addition: No  
Conversion: No

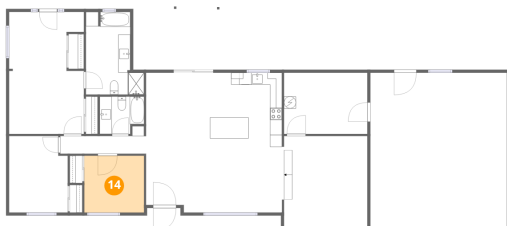
### 13 Floor 1 - Covered Patio



Dimensions: 14'0" x 10'1"  
Area: 142 sq. ft  
Counted as living area: No

Heated: No  
Finished: No  
Enclosed: No  
Contiguous: Yes  
Permitted: Yes  
Wet space: No  
Addition: No  
Conversion: No

### 14 Floor 1 - Bedroom



Dimensions: 9'11" x 9'5"  
Area: 94 sq. ft  
Counted as living area: Yes

Heated: Yes  
Finished: Yes  
Enclosed: Yes  
Contiguous: Yes  
Permitted: Yes  
Wet space: No  
Addition: No  
Conversion: No