

1617 W Gold Bar Rd, Wasilla, AK, US

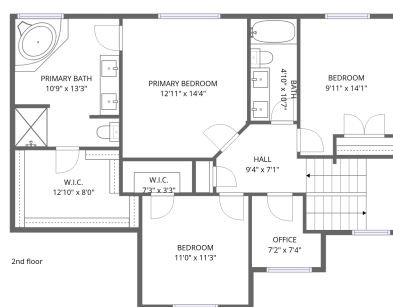


PATIO
42'1" x 17'2"

DECK
15'8" x 12'0"



1st floor



2nd floor

Total Area: 1921 sq. ft

1st Floor: 951 sq. ft, 2nd Floor: 970 sq. ft

Excluded: Porch 89 sq. ft, Patio 526 sq. ft, Deck 189 sq. ft, Garage 1312 sq. ft, Walls: 227 sq. ft

Property summary



Home data report

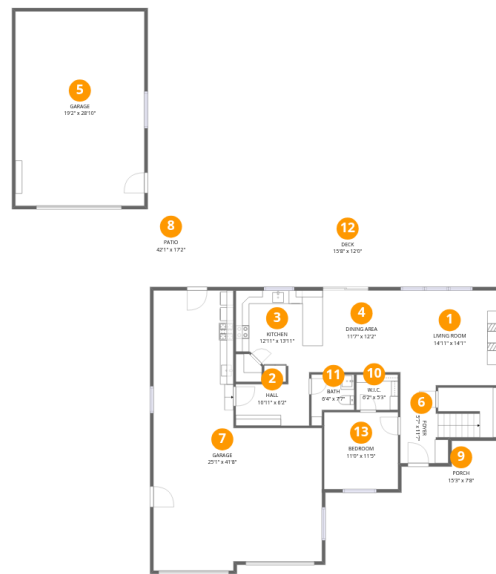
1617 W Gold Bar Rd, Wasilla, AK, US

 **1**
Half baths

 **2**
Garages

Home data report

1617 W Gold Bar Rd, Wasilla, AK, US



Room dimensions

Floor 1

Total:951sqft

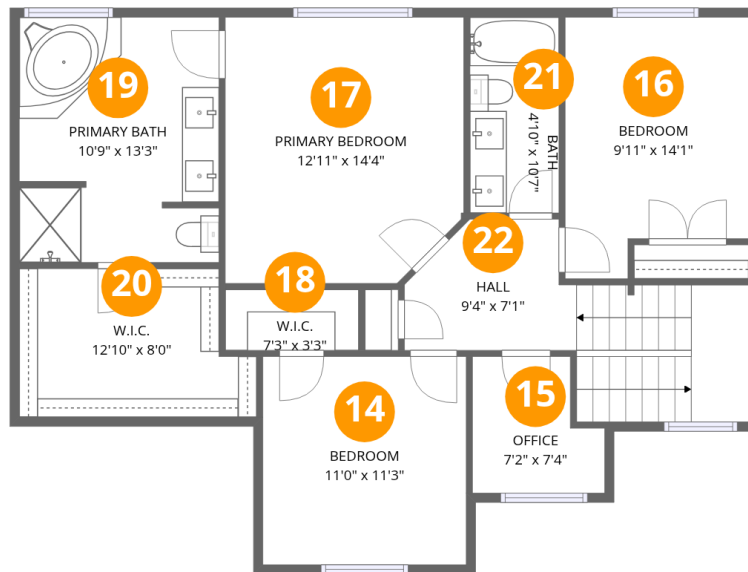
Excluded: 2116sqft

#		Dimensions	sqft	Counted as living area
1	Living Room	14'11" x 14'1"	211 sq. ft	Yes
2	Hall	10'11" x 6'2"	67 sq. ft	Yes
3	Kitchen	12'11" x 13'11"	157 sq. ft	Yes
4	Dining Area	11'7" x 12'2"	140 sq. ft	Yes
5	Garage	19'2" x 28'10"	554 sq. ft	No
6	Foyer	5'7" x 11'7"	136 sq. ft	Yes
7	Garage	25'1" x 41'8"	757 sq. ft	No
8	Patio	42'1" x 17'2"	526 sq. ft	No
9	Porch	15'3" x 7'8"	89 sq. ft	No
10	W.I.C.	6'2" x 5'3"	33 sq. ft	Yes
11	Bath	6'4" x 7'7"	37 sq. ft	Yes

Home data report

1617 W Gold Bar Rd, Wasilla, AK, US

#		Dimensions	sqft	Counted as living area
12	Deck	15'8" x 12'0"	189 sq. ft	No
13	Bedroom	11'0" x 11'5"	126 sq. ft	Yes



Room dimensions

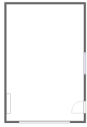
Floor 2

Total:970sqft

Excluded: 0sqft

#		Dimensions	sqft	Counted as living area
14	Bedroom	11'0" x 11'3"	123 sq. ft	Yes
15	Office	7'2" x 7'4"	45 sq. ft	Yes
16	Bedroom	9'11" x 14'1"	126 sq. ft	Yes
17	Primary Bedroom	12'11" x 14'4"	178 sq. ft	Yes
18	W.I.C.	7'3" x 3'3"	24 sq. ft	Yes
19	Primary Bath	10'9" x 13'3"	141 sq. ft	Yes
20	W.I.C.	12'10" x 8'0"	93 sq. ft	Yes
21	Bath	4'10" x 10'7"	51 sq. ft	Yes
22	Hall	9'4" x 7'1"	125 sq. ft	Yes

1 Floor 1 - Living Room



Dimensions: 14'11" x 14'1"
Area: 211 sq. ft
Counted as living area: Yes

Heated: Yes
Finished: Yes
Enclosed: Yes
Contiguous: Yes
Permitted: Yes
Wet space: No
Addition: No
Conversion: No



2 Floor 1 - Hall

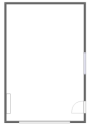


Dimensions: 10'11" x 6'2"
Area: 67 sq. ft
Counted as living area: Yes

Heated: Yes
Finished: Yes
Enclosed: Yes
Contiguous: Yes
Permitted: Yes
Wet space: No
Addition: No
Conversion: No



3 Floor 1 - Kitchen



Dimensions: 12'11" x 13'11"
Area: 157 sq. ft
Counted as living area: Yes

Heated: Yes
Finished: Yes
Enclosed: Yes
Contiguous: Yes
Permitted: Yes
Wet space: No
Addition: No
Conversion: No

4 Floor 1 - Dining Area



Dimensions: 11'7" x 12'2"
Area: 140 sq. ft
Counted as living area: Yes

Heated: Yes
Finished: Yes
Enclosed: Yes
Contiguous: Yes
Permitted: Yes
Wet space: No
Addition: No
Conversion: No

5 Floor 1 - Garage



Dimensions: 19'2" x 28'10"
Area: 554 sq. ft
Counted as living area: No

Heated: No
Finished: No
Enclosed: Yes
Contiguous: Yes
Permitted: Yes
Wet space: No
Addition: No
Conversion: No

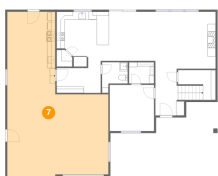
6 Floor 1 - Foyer



Dimensions: 5'7" x 11'7"
Area: 136 sq. ft
Counted as living area: Yes

Heated: Yes
Finished: Yes
Enclosed: Yes
Contiguous: Yes
Permitted: Yes
Wet space: No
Addition: No
Conversion: No

7 Floor 1 - Garage



Dimensions: 25'1" x 41'8"
Area: 757 sq. ft
Counted as living area: No

Heated: No
Finished: No
Enclosed: Yes
Contiguous: Yes
Permitted: Yes
Wet space: No
Addition: No
Conversion: No

8 Floor 1 - Patio



Dimensions: 42'1" x 17'2"
Area: 526 sq. ft
Counted as living area: No

Heated: No
Finished: No
Enclosed: No
Contiguous: Yes
Permitted: Yes
Wet space: No
Addition: No
Conversion: No

9 Floor 1 - Porch



Dimensions: 15'3" x 7'8"
Area: 89 sq. ft
Counted as living area: No

Heated: No
Finished: No
Enclosed: No
Contiguous: Yes
Permitted: Yes
Wet space: No
Addition: No
Conversion: No

10 Floor 1 - W.I.C.



Dimensions: 6'2" x 5'3"
Area: 33 sq. ft
Counted as living area: Yes

Heated: Yes
Finished: Yes
Enclosed: Yes
Contiguous: Yes
Permitted: Yes
Wet space: No
Addition: No
Conversion: No

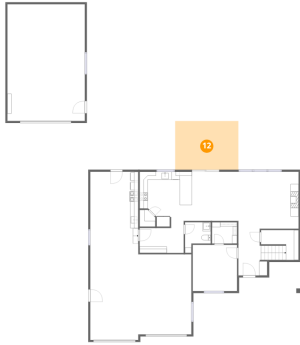
11 Floor 1 - Bath



Dimensions: 6'4" x 7'7"
Area: 37 sq. ft
Counted as living area: Yes

Heated: Yes
Finished: Yes
Enclosed: Yes
Contiguous: Yes
Permitted: Yes
Wet space: Yes
Addition: No
Conversion: No

12 Floor 1 - Deck



Dimensions: 15'8" x 12'0"
Area: 189 sq. ft
Counted as living area: No

Heated: No
Finished: No
Enclosed: No
Contiguous: Yes
Permitted: Yes
Wet space: No
Addition: No
Conversion: No

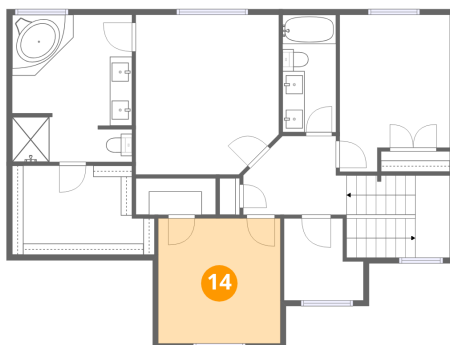
13 Floor 1 - Bedroom



Dimensions: 11'0" x 11'5"
Area: 126 sq. ft
Counted as living area: Yes

Heated: Yes
Finished: Yes
Enclosed: Yes
Contiguous: Yes
Permitted: Yes
Wet space: No
Addition: No
Conversion: No

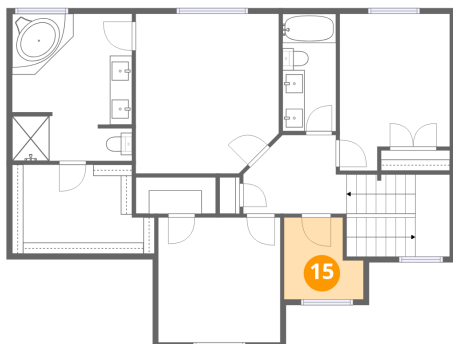
14 Floor 2 - Bedroom



Dimensions: 11'0" x 11'3"
Area: 123 sq. ft
Counted as living area: Yes

Heated: Yes
Finished: Yes
Enclosed: Yes
Contiguous: Yes
Permitted: Yes
Wet space: No
Addition: No
Conversion: No

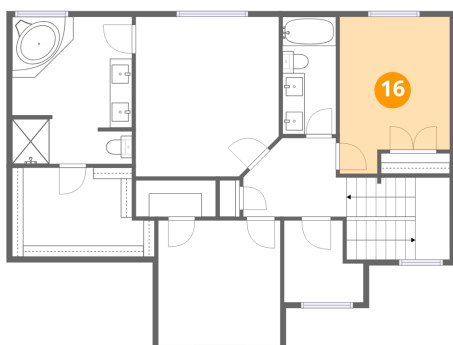
15 Floor 2 - Office



Dimensions: 7'2" x 7'4"
Area: 45 sq. ft
Counted as living area: Yes

Heated: Yes
Finished: Yes
Enclosed: Yes
Contiguous: Yes
Permitted: Yes
Wet space: No
Addition: No
Conversion: No

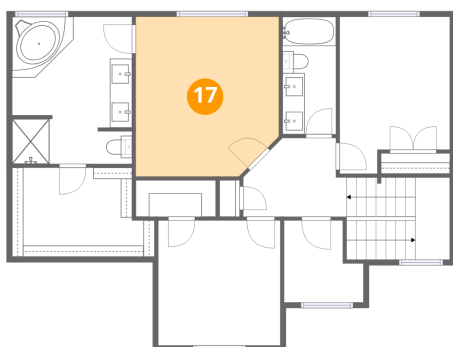
16 Floor 2 - Bedroom



Dimensions: 9'11" x 14'1"
Area: 126 sq. ft
Counted as living area: Yes

Heated: Yes
Finished: Yes
Enclosed: Yes
Contiguous: Yes
Permitted: Yes
Wet space: No
Addition: No
Conversion: No

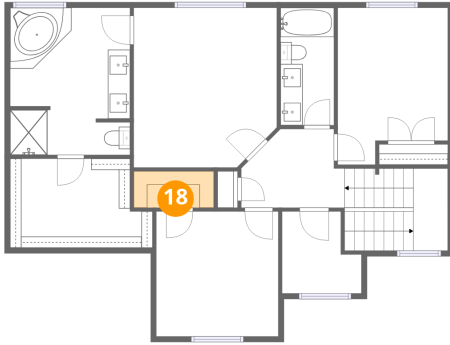
17 Floor 2 - Primary Bedroom



Dimensions: 12'11" x 14'4"
Area: 178 sq. ft
Counted as living area: Yes

Heated: Yes
Finished: Yes
Enclosed: Yes
Contiguous: Yes
Permitted: Yes
Wet space: No
Addition: No
Conversion: No

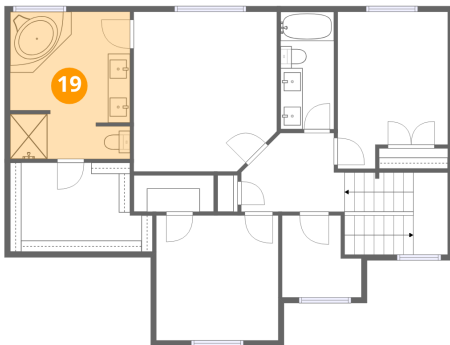
18 Floor 2 - W.I.C.



Dimensions: 7'3" x 3'3"
Area: 24 sq. ft
Counted as living area: Yes

Heated: Yes
Finished: Yes
Enclosed: Yes
Contiguous: Yes
Permitted: Yes
Wet space: No
Addition: No
Conversion: No

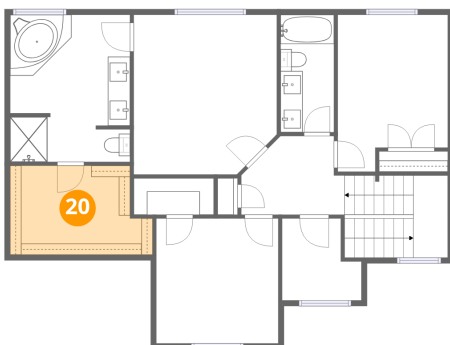
19 Floor 2 - Primary Bath



Dimensions: 10'9" x 13'3"
Area: 141 sq. ft
Counted as living area: Yes

Heated: Yes
Finished: Yes
Enclosed: Yes
Contiguous: Yes
Permitted: Yes
Wet space: Yes
Addition: No
Conversion: No

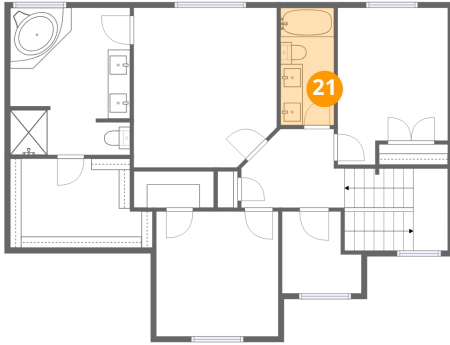
20 Floor 2 - W.I.C.



Dimensions: 12'10" x 8'0"
Area: 93 sq. ft
Counted as living area: Yes

Heated: Yes
Finished: Yes
Enclosed: Yes
Contiguous: Yes
Permitted: Yes
Wet space: No
Addition: No
Conversion: No

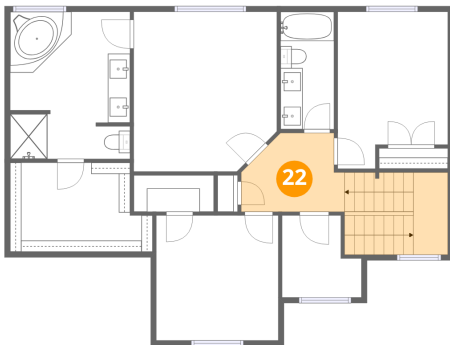
21 Floor 2 - Bath



Dimensions: 4'10" x 10'7"
Area: 51 sq. ft
Counted as living area: Yes

Heated: Yes
Finished: Yes
Enclosed: Yes
Contiguous: Yes
Permitted: Yes
Wet space: Yes
Addition: No
Conversion: No

22 Floor 2 - Hall



Dimensions: 9'4" x 7'1"
Area: 125 sq. ft
Counted as living area: Yes

Heated: Yes
Finished: Yes
Enclosed: Yes
Contiguous: Yes
Permitted: Yes
Wet space: No
Addition: No
Conversion: No