

Home report

1244 Dogwood Court, Bartlesville, Washington County,
Oklahoma, United States, 74006



Total Area: 5070 sq. ft
Floor 1: 2899 sq. ft, Floor 2: 2171 sq. ft
Excluded: Room 155 sq. ft, Garage 573 sq. ft, Fireplace 11 sq. ft, Open to below 50 sq. ft,
Walls: 299 sq. ft

Property summary

 **2** Floors

 **4** Bedrooms

 **4** Bathrooms

Home report

**1244 Dogwood Court, Bartlesville, Washington County,
Oklahoma, United States, 74006**



1
Half baths



1
Garages

Home report

1244 Dogwood Court, Bartlesville, Washington County,
Oklahoma, United States, 74006



Room dimensions

Floor 1 Total:2899sqft Excluded: 739sqft

#		Max Dimensions	sqft	Included
1	Hall	3'8" x 11'7"	43 sq. ft	Yes
2	Kitchen	19'1" x 15'5"	295 sq. ft	Yes
3	Breakfast Nook	14'3" x 12'1"	159 sq. ft	Yes
4	Living Room	18'10" x 26'8"	547 sq. ft	Yes
5	Pantry	4'11" x 6'6"	32 sq. ft	Yes
6	Living Room	18'9" x 12'5"	237 sq. ft	Yes
7	WC	6'5" x 5'4"	34 sq. ft	Yes
8	Hall	9'9" x 14'4"	96 sq. ft	Yes
9	Foyer	14'3" x 21'0"	268 sq. ft	Yes
10	Bath	6'1" x 8'2"	39 sq. ft	Yes
11	Dining Area	19'0" x 16'5"	303 sq. ft	Yes

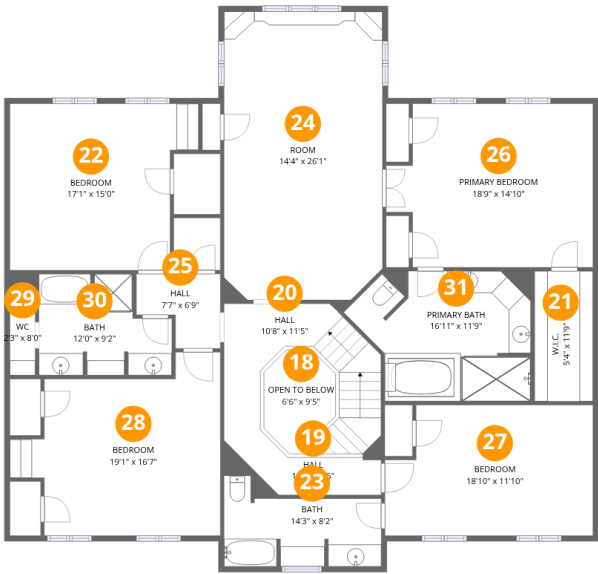
Home report

**1244 Dogwood Court, Bartlesville, Washington County,
Oklahoma, United States, 74006**

#		Max Dimensions	sqft	Included
12	Room	20'7" x 7'6"	155 sq. ft	No
13	W.I.C.	7'3" x 6'7"	48 sq. ft	Yes
14	Hall	3'10" x 8'7"	33 sq. ft	Yes
15	Family Room	23'9" x 24'8"	549 sq. ft	Yes
16	Laundry	9'10" x 12'6"	100 sq. ft	Yes
17	Garage	22'8" x 25'7"	573 sq. ft	No

Home report

1244 Dogwood Court, Bartlesville, Washington County,
Oklahoma, United States, 74006



Room dimensions

Floor 2 Total:2171sqft Excluded: 50sqft

#		Max Dimensions	sqft	Included
18	Open To Below	6'6" x 9'5"	50 sq. ft	No
19	Hall	11'3" x 3'5"	50 sq. ft	No
20	Hall	10'8" x 11'5"	123 sq. ft	No
21	W.I.C.	5'4" x 11'9"	62 sq. ft	Yes
22	Bedroom	17'1" x 15'0"	229 sq. ft	Yes
23	Bath	14'3" x 8'2"	96 sq. ft	Yes
24	Room	14'4" x 26'1"	370 sq. ft	Yes
25	Hall	7'7" x 6'9"	40 sq. ft	Yes
26	Primary Bedroom	18'9" x 14'10"	252 sq. ft	Yes
27	Bedroom	18'10" x 11'10"	209 sq. ft	Yes
28	Bedroom	19'1" x 16'7"	247 sq. ft	Yes

Home report

1244 Dogwood Court, Bartlesville, Washington County,
Oklahoma, United States, 74006

#		Max Dimensions	sqft	Included
29	WC	2'3" x 8'0"	21 sq. ft	Yes
30	Bath	12'0" x 9'2"	93 sq. ft	Yes
31	Primary Bath	16'11" x 11'9"	167 sq. ft	Yes

1244 Dogwood Court, Bartlesville, Washington County,
Oklahoma, United States, 74006

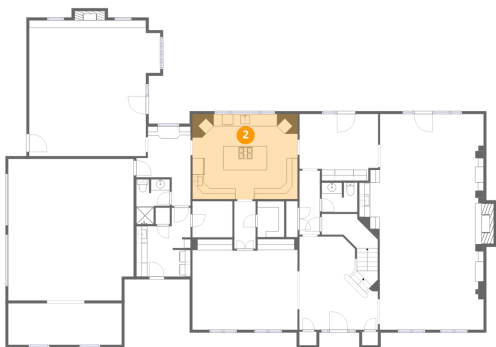
1 Floor 1 - Hall



Max Dimensions: 3'8" x 11'7"
Calculated Area: 43 sq. ft
Included: Yes

Heated: Yes
Finished: Yes
Enclosed: Yes
Contiguous: Yes
Permitted: Yes
Wet space: No
Addition: No
Conversion: No

2 Floor 1 - Kitchen

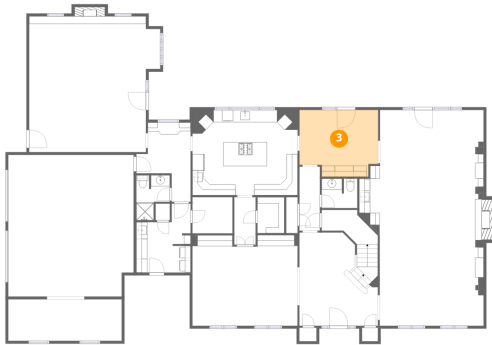


Max Dimensions: 19'1" x 15'5"
Calculated Area: 295 sq. ft
Included: Yes

Heated: Yes
Finished: Yes
Enclosed: Yes
Contiguous: Yes
Permitted: Yes
Wet space: No
Addition: No
Conversion: No

1244 Dogwood Court, Bartlesville, Washington County,
Oklahoma, United States, 74006

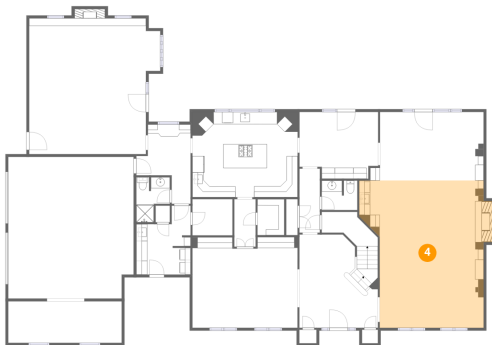
3 Floor 1 - Breakfast Nook



Max Dimensions: 14'3" x 12'1"
Calculated Area: 159 sq. ft
Included: Yes

Heated: Yes
Finished: Yes
Enclosed: Yes
Contiguous: Yes
Permitted: Yes
Wet space: No
Addition: No
Conversion: No

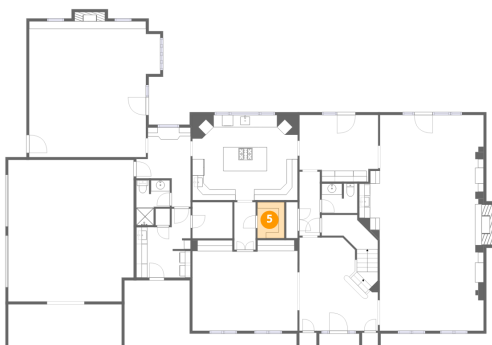
4 Floor 1 - Living Room



Max Dimensions: 18'10" x 26'8"
Calculated Area: 547 sq. ft
Included: Yes

Heated: Yes
Finished: Yes
Enclosed: Yes
Contiguous: Yes
Permitted: Yes
Wet space: No
Addition: No
Conversion: No

5 Floor 1 - Pantry

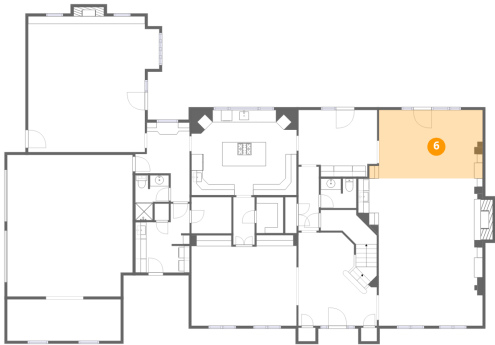


Max Dimensions: 4'11" x 6'6"
Calculated Area: 32 sq. ft
Included: Yes

Heated: Yes
Finished: Yes
Enclosed: Yes
Contiguous: Yes
Permitted: Yes
Wet space: No
Addition: No
Conversion: No

1244 Dogwood Court, Bartlesville, Washington County,
Oklahoma, United States, 74006

6 Floor 1 - Living Room



Max Dimensions: 18'9" x 12'5"
Calculated Area: 237 sq. ft
Included: Yes

Heated: Yes
Finished: Yes
Enclosed: Yes
Contiguous: Yes
Permitted: Yes
Wet space: No
Addition: No
Conversion: No

7 Floor 1 - WC



Max Dimensions: 6'5" x 5'4"
Calculated Area: 34 sq. ft
Included: Yes

Heated: Yes
Finished: Yes
Enclosed: Yes
Contiguous: Yes
Permitted: Yes
Wet space: Yes
Addition: No
Conversion: No

8 Floor 1 - Hall



Max Dimensions: 9'9" x 14'4"
Calculated Area: 96 sq. ft
Included: Yes

Heated: Yes
Finished: Yes
Enclosed: Yes
Contiguous: Yes
Permitted: Yes
Wet space: No
Addition: No
Conversion: No

1244 Dogwood Court, Bartlesville, Washington County,
Oklahoma, United States, 74006

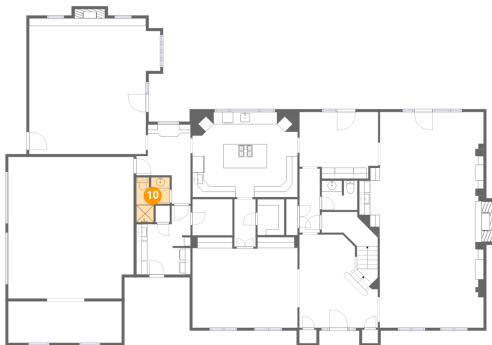
9 Floor 1 - Foyer



Max Dimensions: 14'3" x 21'0"
Calculated Area: 268 sq. ft
Included: Yes

Heated: Yes
Finished: Yes
Enclosed: Yes
Contiguous: Yes
Permitted: Yes
Wet space: No
Addition: No
Conversion: No

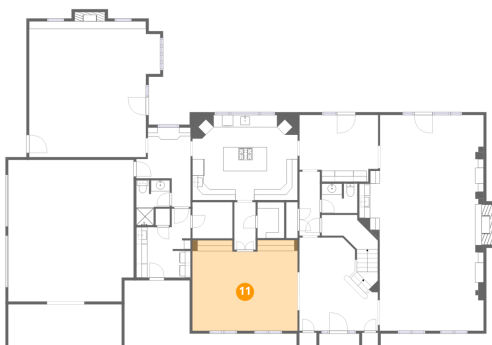
10 Floor 1 - Bath



Max Dimensions: 6'1" x 8'2"
Calculated Area: 39 sq. ft
Included: Yes

Heated: Yes
Finished: Yes
Enclosed: Yes
Contiguous: Yes
Permitted: Yes
Wet space: Yes
Addition: No
Conversion: No

11 Floor 1 - Dining Area

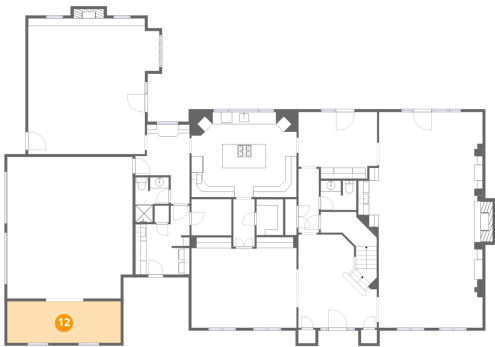


Max Dimensions: 19'0" x 16'5"
Calculated Area: 303 sq. ft
Included: Yes

Heated: Yes
Finished: Yes
Enclosed: Yes
Contiguous: Yes
Permitted: Yes
Wet space: No
Addition: No
Conversion: No

1244 Dogwood Court, Bartlesville, Washington County,
Oklahoma, United States, 74006

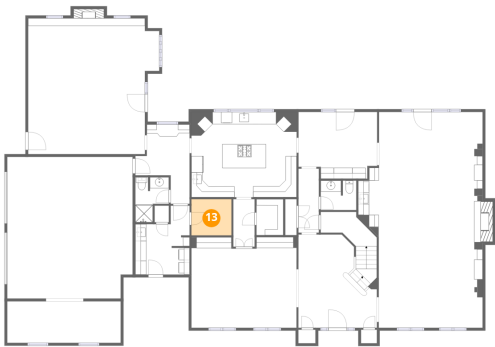
12 Floor 1 - Room



Max Dimensions: 20'7" x 7'6"
Calculated Area: 155 sq. ft
Included: No

Heated: Yes
Finished: No
Enclosed: Yes
Contiguous: Yes
Permitted: Yes
Wet space: No
Addition: No
Conversion: No

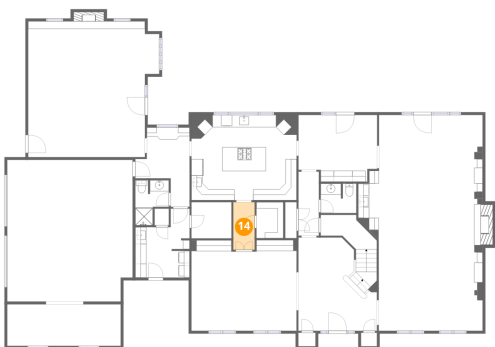
13 Floor 1 - W.I.C.



Max Dimensions: 7'3" x 6'7"
Calculated Area: 48 sq. ft
Included: Yes

Heated: Yes
Finished: Yes
Enclosed: Yes
Contiguous: Yes
Permitted: Yes
Wet space: No
Addition: No
Conversion: No

14 Floor 1 - Hall



Max Dimensions: 3'10" x 8'7"
Calculated Area: 33 sq. ft
Included: Yes

Heated: Yes
Finished: Yes
Enclosed: Yes
Contiguous: Yes
Permitted: Yes
Wet space: No
Addition: No
Conversion: No

1244 Dogwood Court, Bartlesville, Washington County,
Oklahoma, United States, 74006

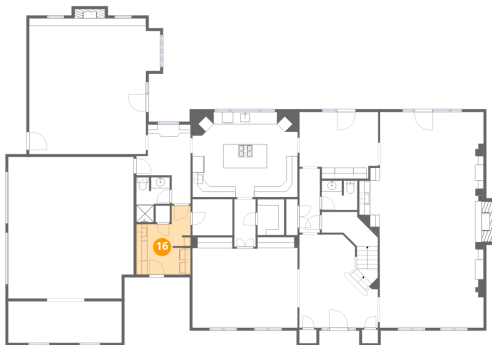
15 Floor 1 - Family Room



Max Dimensions: 23'9" x 24'8"
Calculated Area: 549 sq. ft
Included: Yes

Heated: Yes
Finished: Yes
Enclosed: Yes
Contiguous: Yes
Permitted: Yes
Wet space: No
Addition: No
Conversion: No

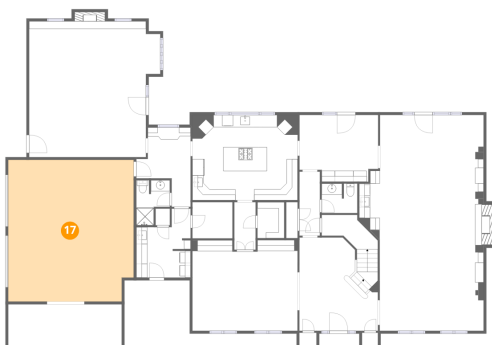
16 Floor 1 - Laundry



Max Dimensions: 9'10" x 12'6"
Calculated Area: 100 sq. ft
Included: Yes

Heated: Yes
Finished: Yes
Enclosed: Yes
Contiguous: Yes
Permitted: Yes
Wet space: No
Addition: No
Conversion: No

17 Floor 1 - Garage

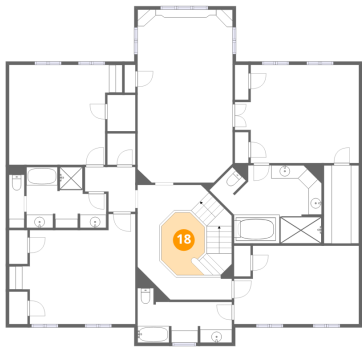


Max Dimensions: 22'8" x 25'7"
Calculated Area: 573 sq. ft
Included: No

Heated: No
Finished: No
Enclosed: Yes
Contiguous: Yes
Permitted: Yes
Wet space: No
Addition: No
Conversion: No

1244 Dogwood Court, Bartlesville, Washington County,
Oklahoma, United States, 74006

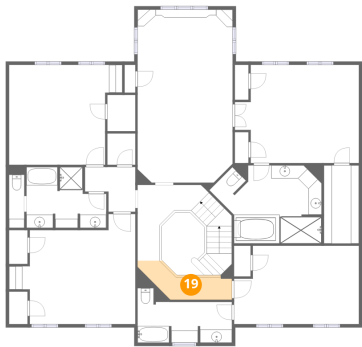
18 Floor 2 - Open To Below



Max Dimensions: 6'6" x 9'5"
Calculated Area: 50 sq. ft
Included: No

Heated: No
Finished: No
Enclosed: No
Contiguous: Yes
Permitted: No
Wet space: No
Addition: No
Conversion: No

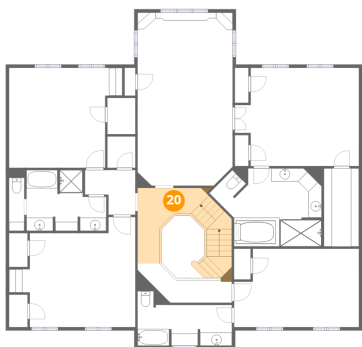
19 Floor 2 - Hall



Max Dimensions: 11'3" x 3'5"
Calculated Area: 50 sq. ft
Included: No

Heated: Yes
Finished: Yes
Enclosed: Yes
Contiguous: Yes
Permitted: Yes
Wet space: No
Addition: No
Conversion: No

20 Floor 2 - Hall

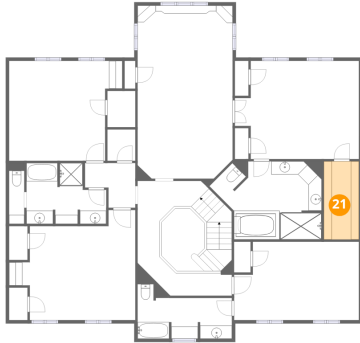


Max Dimensions: 10'8" x 11'5"
Calculated Area: 123 sq. ft
Included: No

Heated: Yes
Finished: Yes
Enclosed: Yes
Contiguous: Yes
Permitted: Yes
Wet space: No
Addition: No
Conversion: No

1244 Dogwood Court, Bartlesville, Washington County,
Oklahoma, United States, 74006

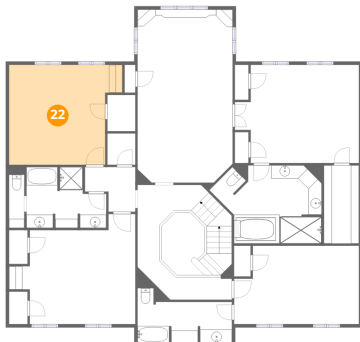
21 Floor 2 - W.I.C.



Max Dimensions: 5'4" x
11'9"
Calculated Area: 62 sq. ft
Included: Yes

Heated: Yes
Finished: Yes
Enclosed: Yes
Contiguous:
Yes
Permitted: Yes
Wet space: No
Addition: No
Conversion: No

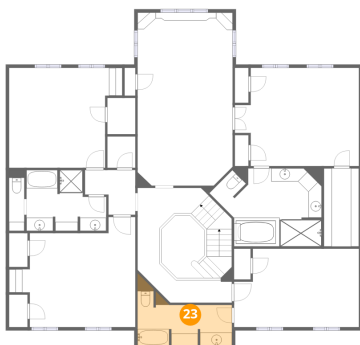
22 Floor 2 - Bedroom



Max Dimensions: 17'1" x
15'0"
Calculated Area: 229 sq. ft
Included: Yes

Heated: Yes
Finished: Yes
Enclosed: Yes
Contiguous:
Yes
Permitted: Yes
Wet space: No
Addition: No
Conversion: No

23 Floor 2 - Bath

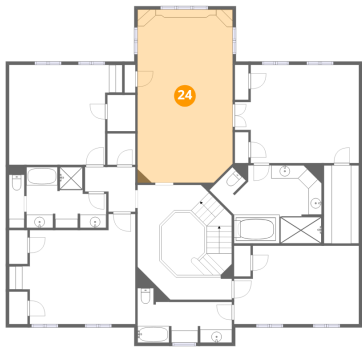


Max Dimensions: 14'3" x
8'2"
Calculated Area: 96 sq. ft
Included: Yes

Heated: Yes
Finished: Yes
Enclosed: Yes
Contiguous:
Yes
Permitted: Yes
Wet space: Yes
Addition: No
Conversion: No

1244 Dogwood Court, Bartlesville, Washington County,
Oklahoma, United States, 74006

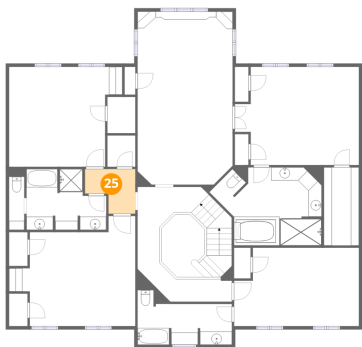
24 Floor 2 - Room



Max Dimensions: 14'4" x 26'1"
Calculated Area: 370 sq. ft
Included: Yes

Heated: Yes
Finished: Yes
Enclosed: Yes
Contiguous: Yes
Permitted: Yes
Wet space: No
Addition: No
Conversion: No

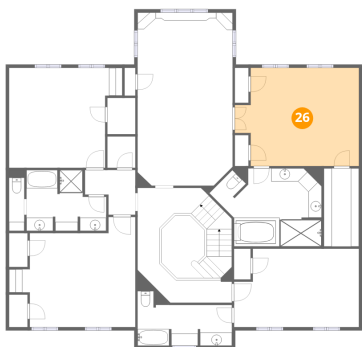
25 Floor 2 - Hall



Max Dimensions: 7'7" x 6'9"
Calculated Area: 40 sq. ft
Included: Yes

Heated: Yes
Finished: Yes
Enclosed: Yes
Contiguous: Yes
Permitted: Yes
Wet space: No
Addition: No
Conversion: No

26 Floor 2 - Primary Bedroom

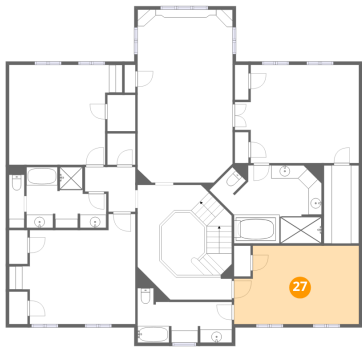


Max Dimensions: 18'9" x 14'10"
Calculated Area: 252 sq. ft
Included: Yes

Heated: Yes
Finished: Yes
Enclosed: Yes
Contiguous: Yes
Permitted: Yes
Wet space: No
Addition: No
Conversion: No

1244 Dogwood Court, Bartlesville, Washington County,
Oklahoma, United States, 74006

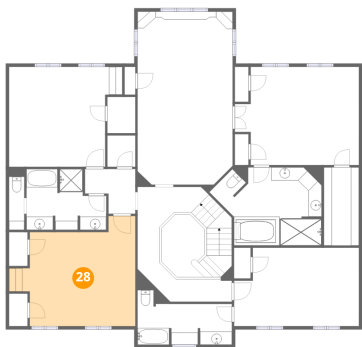
27 Floor 2 - Bedroom



Max Dimensions: 18'10" x 11'10"
Calculated Area: 209 sq. ft
Included: Yes

Heated: Yes
Finished: Yes
Enclosed: Yes
Contiguous: Yes
Permitted: Yes
Wet space: No
Addition: No
Conversion: No

28 Floor 2 - Bedroom



Max Dimensions: 19'1" x 16'7"
Calculated Area: 247 sq. ft
Included: Yes

Heated: Yes
Finished: Yes
Enclosed: Yes
Contiguous: Yes
Permitted: Yes
Wet space: No
Addition: No
Conversion: No

29 Floor 2 - WC



Max Dimensions: 2'3" x 8'0"
Calculated Area: 21 sq. ft
Included: Yes

Heated: Yes
Finished: Yes
Enclosed: Yes
Contiguous: Yes
Permitted: Yes
Wet space: Yes
Addition: No
Conversion: No

1244 Dogwood Court, Bartlesville, Washington County,
Oklahoma, United States, 74006

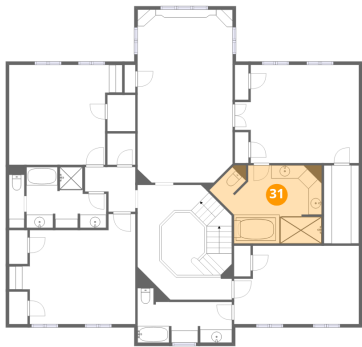
30 Floor 2 - Bath



Max Dimensions: 12'0" x 9'2"
Calculated Area: 93 sq. ft
Included: Yes

Heated: Yes
Finished: Yes
Enclosed: Yes
Contiguous: Yes
Permitted: Yes
Wet space: Yes
Addition: No
Conversion: No

31 Floor 2 - Primary Bath



Max Dimensions: 16'11" x 11'9"
Calculated Area: 167 sq. ft
Included: Yes

Heated: Yes
Finished: Yes
Enclosed: Yes
Contiguous: Yes
Permitted: Yes
Wet space: Yes
Addition: No
Conversion: No