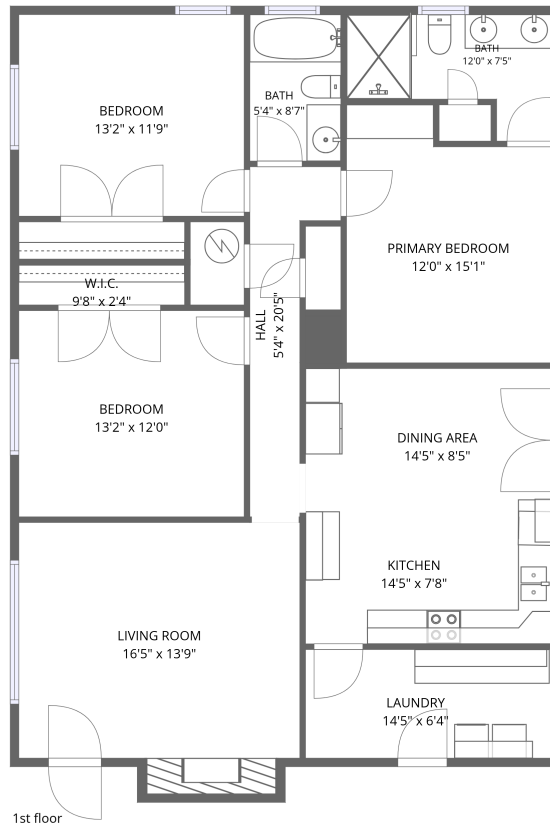


Home data report

# 4500 Drummonds Rd, Drummonds, TN, US




**Total Area: 1355 sq. ft**

1st Floor: 1355 sq. ft

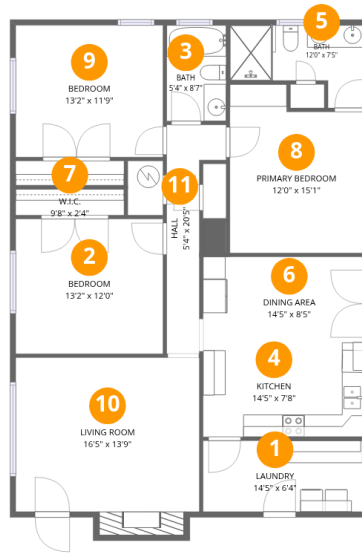
Excluded: Fireplace 18 sq. ft, Walls: 72 sq. ft

## Property summary

 **1** Floors

 **3** Bedrooms

 **2** Bathrooms



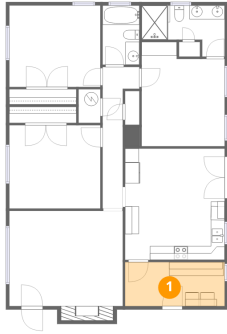
## Room dimensions

Floor 1

Total:1355sqft Excluded: 18sqft

#		Dimensions	sqft	Counted as living area
1	Laundry	14'5" x 6'4"	91 sq. ft	Yes
2	Bedroom	13'2" x 12'0"	158 sq. ft	Yes
3	Bath	5'4" x 8'7"	45 sq. ft	Yes
4	Kitchen	14'5" x 7'8"	110 sq. ft	Yes
5	Bath	12'0" x 7'5"	67 sq. ft	Yes
6	Dining Area	14'5" x 8'5"	122 sq. ft	Yes
7	W.I.C.	9'8" x 2'4"	22 sq. ft	Yes
8	Primary Bedroom	12'0" x 15'1"	164 sq. ft	Yes
9	Bedroom	13'2" x 11'9"	155 sq. ft	Yes
10	Living Room	16'5" x 13'9"	241 sq. ft	Yes
11	Hall	5'4" x 20'5"	67 sq. ft	Yes

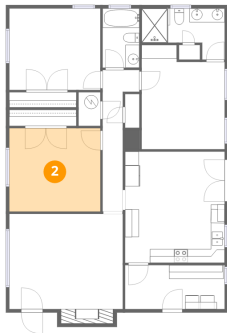
## 1 Floor 1 - Laundry



Dimensions: 14'5" x 6'4"  
Area: 91 sq. ft  
Counted as living area: Yes

Heated: Yes  
Finished: Yes  
Enclosed: Yes  
Contiguous: Yes  
Permitted: Yes  
Wet space: No  
Addition: No  
Conversion: No

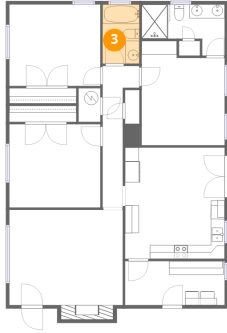
## 2 Floor 1 - Bedroom



Dimensions: 13'2" x 12'0"  
Area: 158 sq. ft  
Counted as living area: Yes

Heated: Yes  
Finished: Yes  
Enclosed: Yes  
Contiguous: Yes  
Permitted: Yes  
Wet space: No  
Addition: No  
Conversion: No

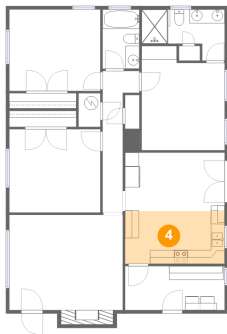
**3** Floor 1 - Bath



Dimensions: 5'4" x 8'7"  
Area: 45 sq. ft  
Counted as living area: Yes

Heated: Yes  
Finished: Yes  
Enclosed: Yes  
Contiguous: Yes  
Permitted: Yes  
Wet space: Yes  
Addition: No  
Conversion: No

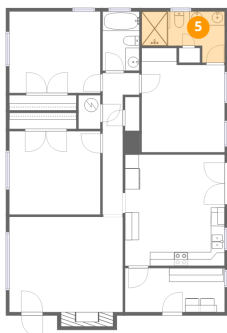
**4** Floor 1 - Kitchen



Dimensions: 14'5" x 7'8"  
Area: 110 sq. ft  
Counted as living area: Yes

Heated: Yes  
Finished: Yes  
Enclosed: Yes  
Contiguous: Yes  
Permitted: Yes  
Wet space: No  
Addition: No  
Conversion: No

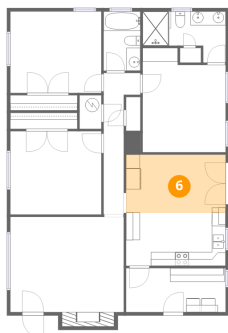
**5** Floor 1 - Bath



Dimensions: 12'0" x 7'5"  
Area: 67 sq. ft  
Counted as living area: Yes

Heated: Yes  
Finished: Yes  
Enclosed: Yes  
Contiguous: Yes  
Permitted: Yes  
Wet space: Yes  
Addition: No  
Conversion: No

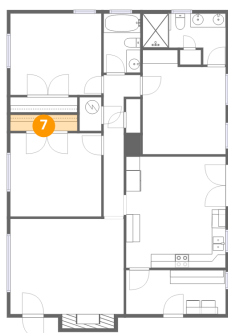
## 6 Floor 1 - Dining Area



Dimensions: 14'5" x 8'5"  
Area: 122 sq. ft  
Counted as living area: Yes

Heated: Yes  
Finished: Yes  
Enclosed: Yes  
Contiguous: Yes  
Permitted: Yes  
Wet space: No  
Addition: No  
Conversion: No

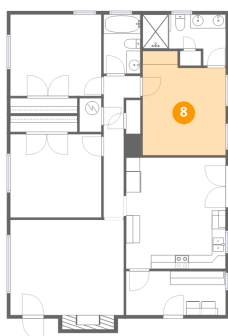
## 7 Floor 1 - W.I.C.



Dimensions: 9'8" x 2'4"  
Area: 22 sq. ft  
Counted as living area: Yes

Heated: Yes  
Finished: Yes  
Enclosed: Yes  
Contiguous: Yes  
Permitted: Yes  
Wet space: No  
Addition: No  
Conversion: No

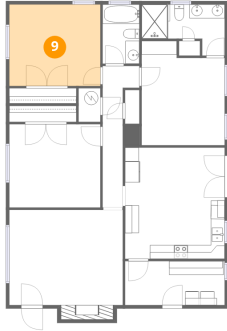
## 8 Floor 1 - Primary Bedroom



Dimensions: 12'0" x 15'1"  
Area: 164 sq. ft  
Counted as living area: Yes

Heated: Yes  
Finished: Yes  
Enclosed: Yes  
Contiguous: Yes  
Permitted: Yes  
Wet space: No  
Addition: No  
Conversion: No

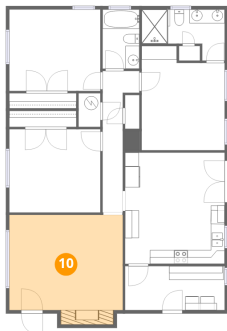
### 9 Floor 1 - Bedroom



Dimensions: 13'2" x 11'9"  
Area: 155 sq. ft  
Counted as living area: Yes

Heated: Yes  
Finished: Yes  
Enclosed: Yes  
Contiguous: Yes  
Permitted: Yes  
Wet space: No  
Addition: No  
Conversion: No

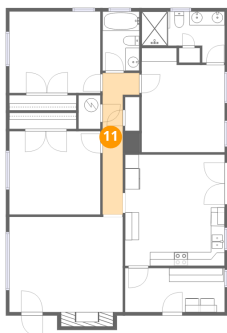
### 10 Floor 1 - Living Room



Dimensions: 16'5" x 13'9"  
Area: 241 sq. ft  
Counted as living area: Yes

Heated: Yes  
Finished: Yes  
Enclosed: Yes  
Contiguous: Yes  
Permitted: Yes  
Wet space: No  
Addition: No  
Conversion: No

### 11 Floor 1 - Hall



Dimensions: 5'4" x 20'5"  
Area: 67 sq. ft  
Counted as living area: Yes

Heated: Yes  
Finished: Yes  
Enclosed: Yes  
Contiguous: Yes  
Permitted: Yes  
Wet space: No  
Addition: No  
Conversion: No