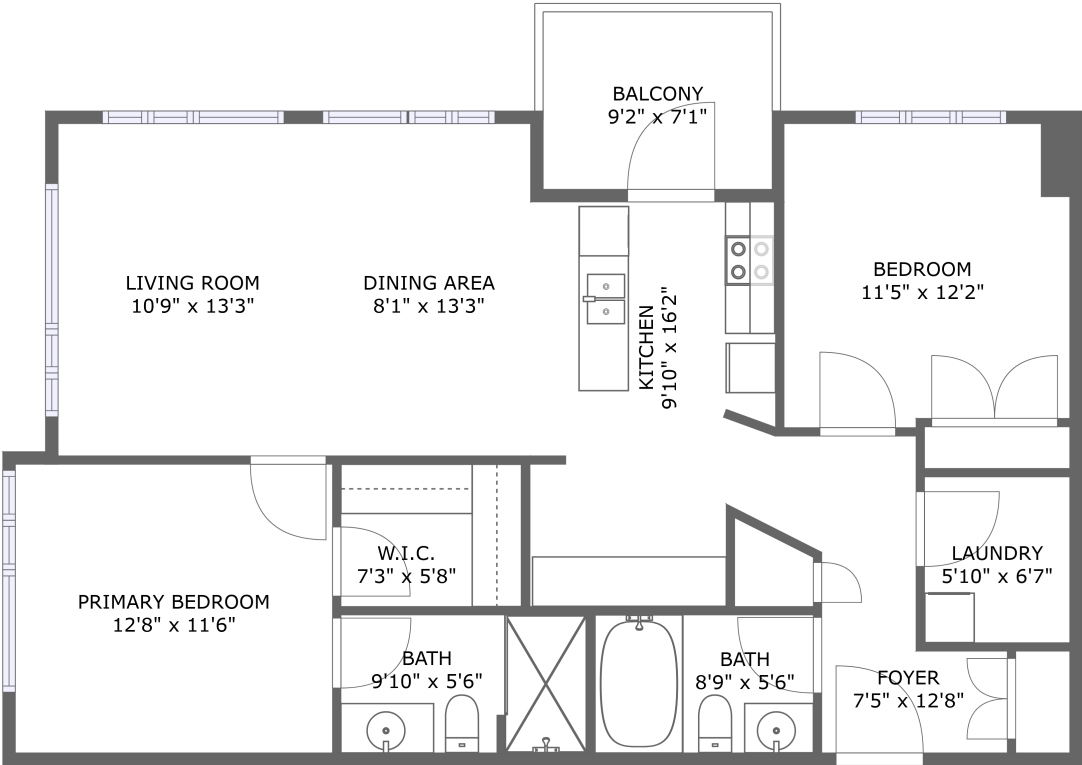


Home report

75 Cleary Avenue, Woodroffe - Lincoln Heights, Ottawa, Ontario,  
Canada, K2A 1R8



FLOOR 1

**Total Area: 1003 sq. ft**  
Floor 1: 1003 sq. ft  
Excluded: Balcony 65 sq. ft, Walls: 0 sq. ft

Property summary

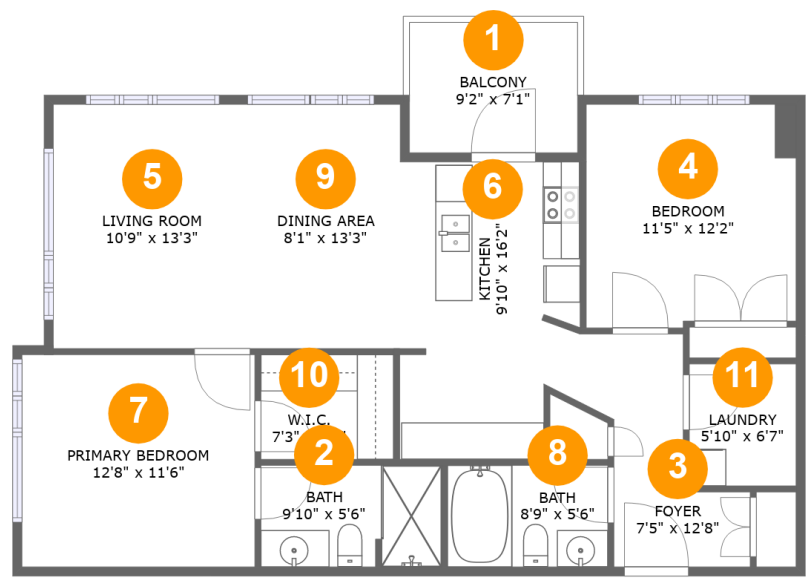
 **1** Floors

 **2** Bedrooms

 **2** Bathrooms

Home report

75 Cleary Avenue, Woodroffe - Lincoln Heights, Ottawa, Ontario, Canada, K2A 1R8



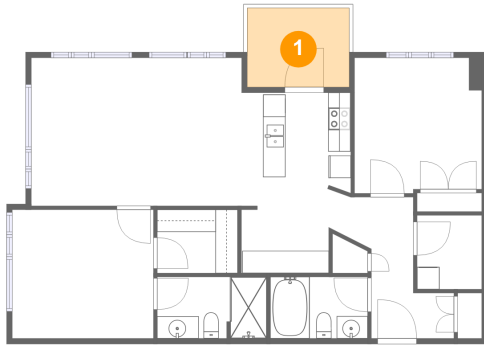
Room dimensions

Floor 1 Total:1003sqft   Excluded: 65sqft

#		Max Dimensions	sqft	Included
1	Balcony	9'2" x 7'1"	65 sq. ft	No
2	Bath	9'10" x 5'6"	54 sq. ft	Yes
3	Foyer	7'5" x 12'8"	70 sq. ft	Yes
4	Bedroom	11'5" x 12'2"	136 sq. ft	Yes
5	Living Room	10'9" x 13'3"	143 sq. ft	Yes
6	Kitchen	9'10" x 16'2"	150 sq. ft	Yes
7	Primary Bedroom	12'8" x 11'6"	146 sq. ft	Yes
8	Bath	8'9" x 5'6"	48 sq. ft	Yes
9	Dining Area	8'1" x 13'3"	108 sq. ft	Yes
10	W.I.C.	7'3" x 5'8"	41 sq. ft	Yes
11	Laundry	5'10" x 6'7"	38 sq. ft	Yes

75 Cleary Avenue, Woodroffe - Lincoln Heights, Ottawa, Ontario,  
Canada, K2A 1R8

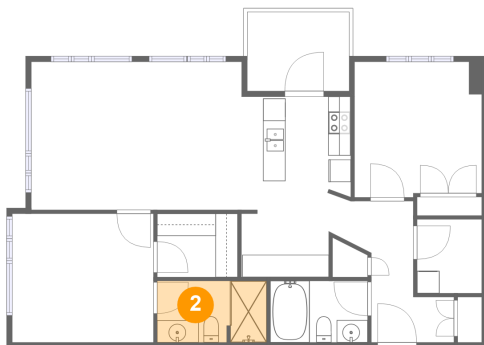
## 1 Floor 1 - Balcony



Max Dimensions: 9'2" x 7'1"  
Calculated Area: 65 sq. ft  
Included: No

Heated: No  
Finished: Yes  
Enclosed: No  
Contiguous: Yes  
Permitted: Yes  
Wet space: No  
Addition: No  
Conversion: No

## 2 Floor 1 - Bath

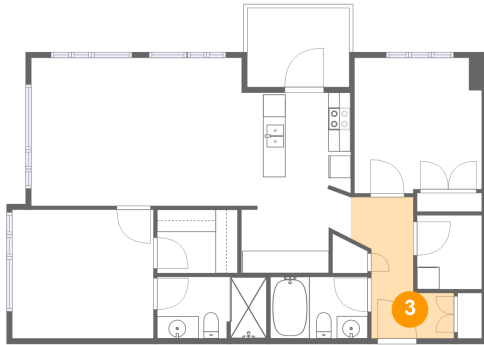


Max Dimensions: 9'10" x 5'6"  
Calculated Area: 54 sq. ft  
Included: Yes

Heated: Yes  
Finished: Yes  
Enclosed: Yes  
Contiguous: Yes  
Permitted: Yes  
Wet space: Yes  
Addition: No  
Conversion: No

75 Cleary Avenue, Woodroffe - Lincoln Heights, Ottawa, Ontario,  
Canada, K2A 1R8

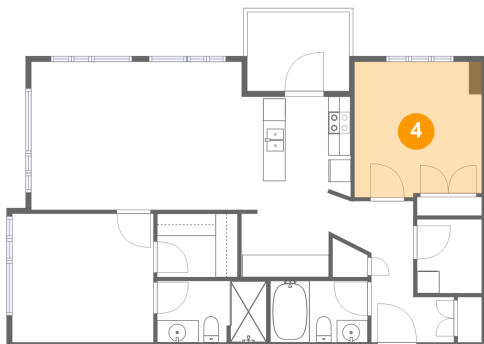
### 3 Floor 1 - Foyer



Max Dimensions: 7'5" x 12'8"  
Calculated Area: 70 sq. ft  
Included: Yes

Heated: Yes  
Finished: Yes  
Enclosed: Yes  
Contiguous: Yes  
Permitted: Yes  
Wet space: No  
Addition: No  
Conversion: No

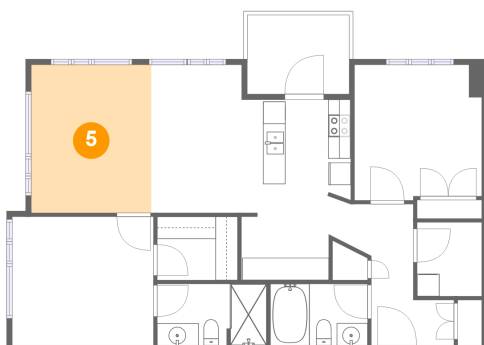
### 4 Floor 1 - Bedroom



Max Dimensions: 11'5" x 12'2"  
Calculated Area: 136 sq. ft  
Included: Yes

Heated: Yes  
Finished: Yes  
Enclosed: Yes  
Contiguous: Yes  
Permitted: Yes  
Wet space: No  
Addition: No  
Conversion: No

### 5 Floor 1 - Living Room



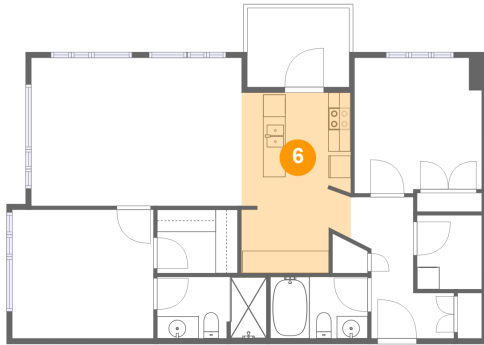
Max Dimensions: 10'9" x 13'3"  
Calculated Area: 143 sq. ft  
Included: Yes

Heated: Yes  
Finished: Yes  
Enclosed: Yes  
Contiguous: Yes  
Permitted: Yes  
Wet space: No  
Addition: No  
Conversion: No

## Home report

75 Cleary Avenue, Woodroffe - Lincoln Heights, Ottawa, Ontario, Canada, K2A 1R8

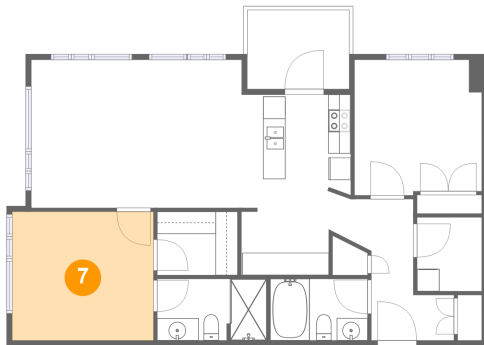
### 6 Floor 1 - Kitchen



Max Dimensions: 9'10" x 16'2"  
Calculated Area: 150 sq. ft  
Included: Yes

Heated: Yes  
Finished: Yes  
Enclosed: Yes  
Contiguous: Yes  
Permitted: Yes  
Wet space: No  
Addition: No  
Conversion: No

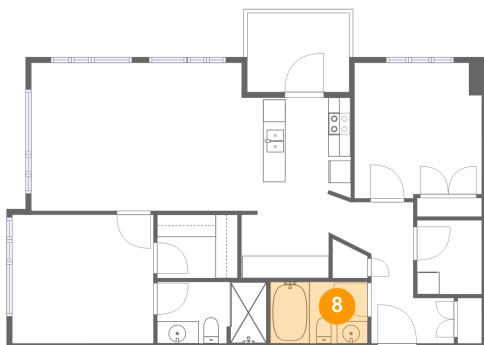
### 7 Floor 1 - Primary Bedroom



Max Dimensions: 12'8" x 11'6"  
Calculated Area: 146 sq. ft  
Included: Yes

Heated: Yes  
Finished: Yes  
Enclosed: Yes  
Contiguous: Yes  
Permitted: Yes  
Wet space: No  
Addition: No  
Conversion: No

### 8 Floor 1 - Bath

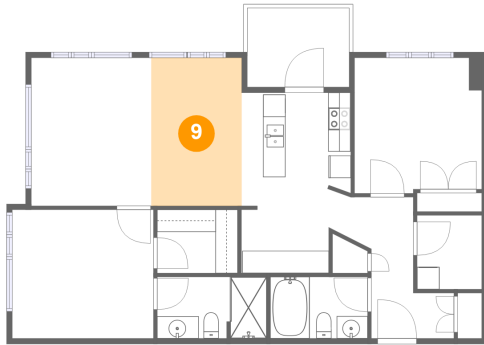


Max Dimensions: 8'9" x 5'6"  
Calculated Area: 48 sq. ft  
Included: Yes

Heated: Yes  
Finished: Yes  
Enclosed: Yes  
Contiguous: Yes  
Permitted: Yes  
Wet space: Yes  
Addition: No  
Conversion: No

75 Cleary Avenue, Woodroffe - Lincoln Heights, Ottawa, Ontario,  
Canada, K2A 1R8

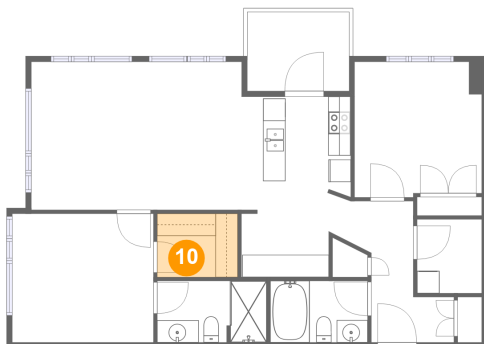
## 9 Floor 1 - Dining Area



Max Dimensions: 8'1" x 13'3"  
Calculated Area: 108 sq. ft  
Included: Yes

Heated: Yes  
Finished: Yes  
Enclosed: Yes  
Contiguous: Yes  
Permitted: Yes  
Wet space: No  
Addition: No  
Conversion: No

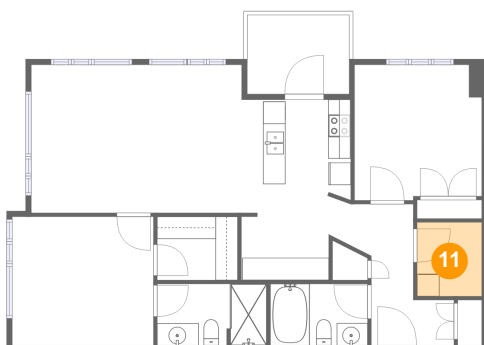
## 10 Floor 1 - W.I.C.



Max Dimensions: 7'3" x 5'8"  
Calculated Area: 41 sq. ft  
Included: Yes

Heated: Yes  
Finished: Yes  
Enclosed: Yes  
Contiguous: Yes  
Permitted: Yes  
Wet space: No  
Addition: No  
Conversion: No

## 11 Floor 1 - Laundry



Max Dimensions: 5'10" x 6'7"  
Calculated Area: 38 sq. ft  
Included: Yes

Heated: Yes  
Finished: Yes  
Enclosed: Yes  
Contiguous: Yes  
Permitted: Yes  
Wet space: No  
Addition: No  
Conversion: No