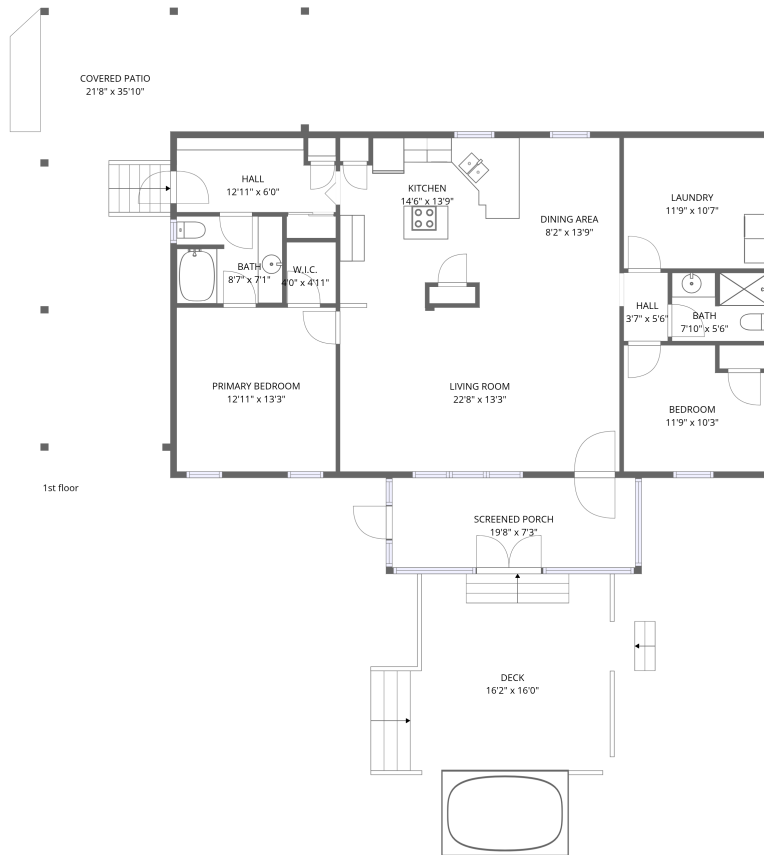


## Home data report

2674 Pico Road, Buchanan, Botetourt County, Virginia, United States, 24066



**Total Area: 1295 sq. ft**

1st Floor: 1295 sq. ft

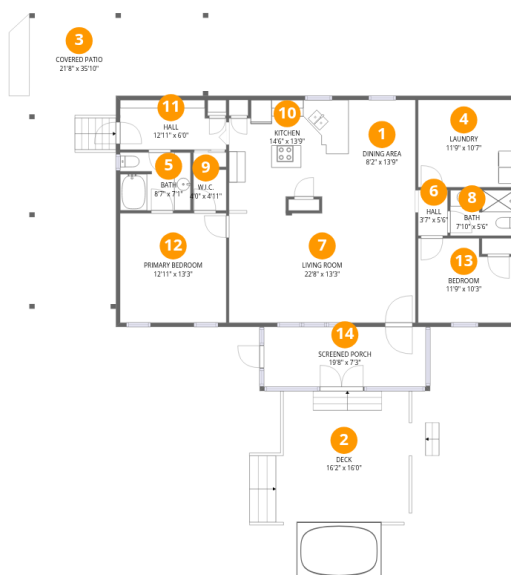
Excluded: Screened porch 143 sq. ft, Covered patio 490 sq. ft, Deck 251 sq. ft, Walls: 94 sq. ft

## Property summary



# Home data report

2674 Pico Road, Buchanan, Botetourt County, Virginia, United States, 24066



## Room dimensions

Floor 1

Total: 1295sqft Excluded: 884sqft

#		Dimensions	sqft	Counted as living area
1	Dining Area	8'2" x 13'9"	112 sq. ft	Yes
2	Deck	16'2" x 16'0"	258 sq. ft	No
3	Covered Patio	21'8" x 35'10"	779 sq. ft	No
4	Laundry	11'9" x 10'7"	124 sq. ft	Yes
5	Bath	8'7" x 7'1"	60 sq. ft	Yes
6	Hall	3'7" x 5'6"	20 sq. ft	Yes
7	Living Room	22'8" x 13'3"	301 sq. ft	Yes
8	Bath	7'10" x 5'6"	43 sq. ft	Yes
9	W.I.C.	4'0" x 4'11"	20 sq. ft	Yes
10	Kitchen	14'6" x 13'9"	199 sq. ft	Yes
11	Hall	12'11" x 6'0"	78 sq. ft	Yes

Home data report

**2674 Pico Road, Buchanan, Botetourt County, Virginia, United States, 24066**

#		Dimensions	sqft	Counted as living area
12	Primary Bedroom	12'11" x 13'3"	171 sq. ft	Yes
13	Bedroom	11'9" x 10'3"	120 sq. ft	Yes
14	Screened Porch	19'8" x 7'3"	143 sq. ft	No

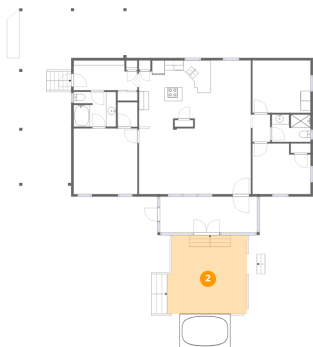
## 1 Floor 1 - Dining Area



Dimensions: 8'2" x 13'9"  
Area: 112 sq. ft  
Counted as living area: Yes

Heated: Yes  
Finished: Yes  
Enclosed: Yes  
Contiguous: Yes  
Permitted: Yes  
Wet space: No  
Addition: No  
Conversion: No

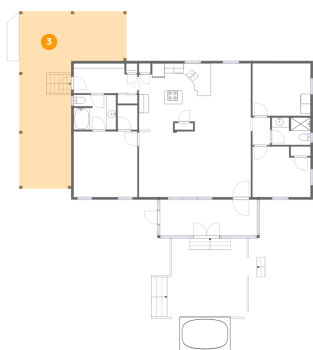
## 2 Floor 1 - Deck



Dimensions: 16'2" x 16'0"  
Area: 258 sq. ft  
Counted as living area: No

Heated: No  
Finished: No  
Enclosed: No  
Contiguous: Yes  
Permitted: Yes  
Wet space: No  
Addition: No  
Conversion: No

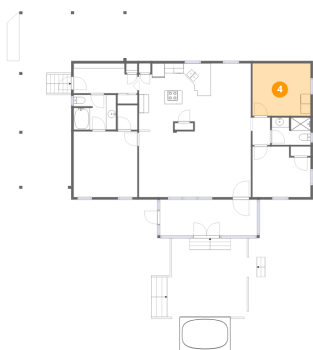
### 3 Floor 1 - Covered Patio



Dimensions: 21'8" x 35'10"  
Area: 779 sq. ft  
Counted as living area: No

Heated: No  
Finished: No  
Enclosed: No  
Contiguous: Yes  
Permitted: Yes  
Wet space: No  
Addition: No  
Conversion: No

### 4 Floor 1 - Laundry



Dimensions: 11'9" x 10'7"  
Area: 124 sq. ft  
Counted as living area: Yes

Heated: Yes  
Finished: Yes  
Enclosed: Yes  
Contiguous: Yes  
Permitted: Yes  
Wet space: No  
Addition: No  
Conversion: No

### 5 Floor 1 - Bath



Dimensions: 8'7" x 7'1"  
Area: 60 sq. ft  
Counted as living area: Yes

Heated: Yes  
Finished: Yes  
Enclosed: Yes  
Contiguous: Yes  
Permitted: Yes  
Wet space: Yes  
Addition: No  
Conversion: No

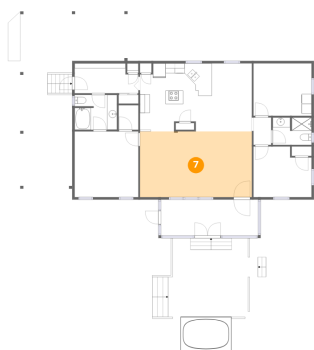
### 6 Floor 1 - Hall



Dimensions: 3'7" x 5'6"  
Area: 20 sq. ft  
Counted as living area: Yes

Heated: Yes  
Finished: Yes  
Enclosed: Yes  
Contiguous: Yes  
Permitted: Yes  
Wet space: No  
Addition: No  
Conversion: No

### 7 Floor 1 - Living Room



Dimensions: 22'8" x 13'3"  
Area: 301 sq. ft  
Counted as living area: Yes

Heated: Yes  
Finished: Yes  
Enclosed: Yes  
Contiguous: Yes  
Permitted: Yes  
Wet space: No  
Addition: No  
Conversion: No

### 8 Floor 1 - Bath



Dimensions: 7'10" x 5'6"  
Area: 43 sq. ft  
Counted as living area: Yes

Heated: Yes  
Finished: Yes  
Enclosed: Yes  
Contiguous: Yes  
Permitted: Yes  
Wet space: Yes  
Addition: No  
Conversion: No

**9** Floor 1 - W.I.C.



Dimensions: 4'0" x 4'11"  
Area: 20 sq. ft  
Counted as living area: Yes

Heated: Yes  
Finished: Yes  
Enclosed: Yes  
Contiguous: Yes  
Permitted: Yes  
Wet space: No  
Addition: No  
Conversion: No

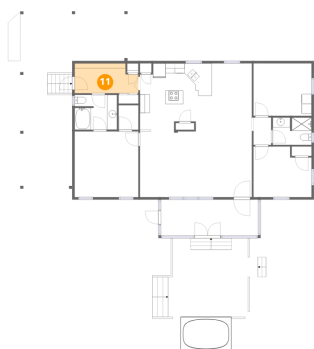
**10** Floor 1 - Kitchen



Dimensions: 14'6" x 13'9"  
Area: 199 sq. ft  
Counted as living area: Yes

Heated: Yes  
Finished: Yes  
Enclosed: Yes  
Contiguous: Yes  
Permitted: Yes  
Wet space: No  
Addition: No  
Conversion: No

**11** Floor 1 - Hall



Dimensions: 12'11" x 6'0"  
Area: 78 sq. ft  
Counted as living area: Yes

Heated: Yes  
Finished: Yes  
Enclosed: Yes  
Contiguous: Yes  
Permitted: Yes  
Wet space: No  
Addition: No  
Conversion: No

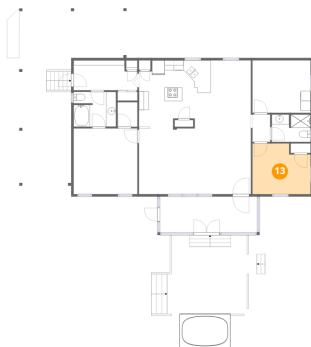
### 12 Floor 1 - Primary Bedroom



Dimensions: 12'11" x 13'3"  
Area: 171 sq. ft  
Counted as living area: Yes

Heated: Yes  
Finished: Yes  
Enclosed: Yes  
Contiguous: Yes  
Permitted: Yes  
Wet space: No  
Addition: No  
Conversion: No

### 13 Floor 1 - Bedroom



Dimensions: 11'9" x 10'3"  
Area: 120 sq. ft  
Counted as living area: Yes

Heated: Yes  
Finished: Yes  
Enclosed: Yes  
Contiguous: Yes  
Permitted: Yes  
Wet space: No  
Addition: No  
Conversion: No

### 14 Floor 1 - Screened Porch



Dimensions: 19'8" x 7'3"  
Area: 143 sq. ft  
Counted as living area: No

Heated: No  
Finished: No  
Enclosed: No  
Contiguous: Yes  
Permitted: Yes  
Wet space: No  
Addition: No  
Conversion: No