

Home data report

1405 Maple St, McKeesport, PA, US



## Total Area: 2104 sq. ft

Basement: 628 sq. ft, 1st Floor: 709 sq. ft, 2nd Floor: 627 sq. ft, 3rd Floor: 140 sq. ft

Excluded: Storage 145 sq. ft, Garage 407 sq. ft, Covered patio 50 sq. ft, Porch 151 sq. ft, Low ceiling 88 sq. ft, Attic 203 sq. ft, Walls: 263 sq. ft

## Property summary



4 Floors



2 Bedrooms



2 Bathrooms



1 Garages



## Room dimensions

Floor 1 Below grade

Total:628sqft

Excluded: 145sqft

#		Dimensions	sqft	Counted as living area
1	Bath	8'11" x 10'10"	96 sq. ft	Yes
2	Storage	19'0" x 7'8"	145 sq. ft	No
3	Basement	20'8" x 27'8"	570 sq. ft	Yes

# Home data report

## 1405 Maple St, McKeesport, PA, US



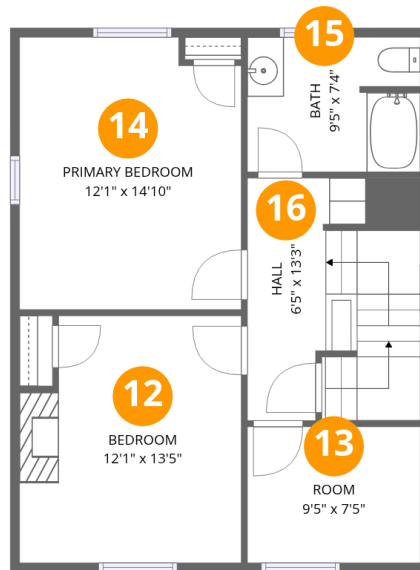
### Room dimensions

Floor 2

Total: 709sqft

Excluded: 608sqft

#		Dimensions	sqft	Counted as living area
4	Living Room	12'8" x 13'6"	170 sq. ft	Yes
5	Covered Patio	9'3" x 5'5"	50 sq. ft	No
6	Kitchen	8'11" x 10'0"	89 sq. ft	Yes
7	Garage	19'11" x 20'5"	407 sq. ft	No
8	Living Room	12'8" x 16'3"	205 sq. ft	Yes
9	Porch	18'10" x 7'5"	140 sq. ft	No
10	Breakfast Nook	8'11" x 11'5"	102 sq. ft	Yes
11	Foyer	8'11" x 14'5"	128 sq. ft	Yes



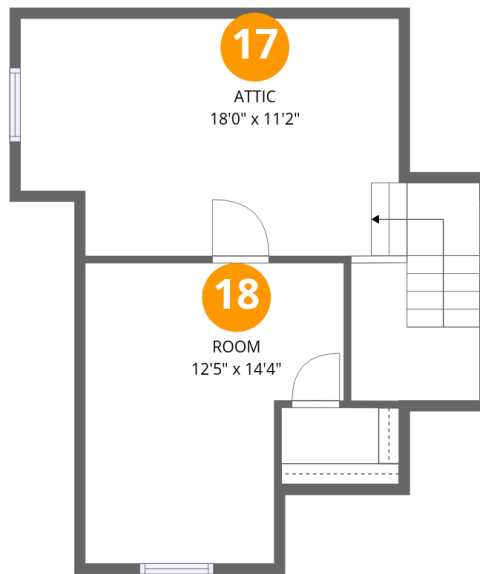
## Room dimensions

Floor 3

Total: 627 sqft

Excluded: 0 sqft

#		Dimensions	sqft	Counted as living area
12	Bedroom	12'1" x 13'5"	163 sq. ft	Yes
13	Room	9'5" x 7'5"	70 sq. ft	Yes
14	Primary Bedroom	12'1" x 14'10"	180 sq. ft	Yes
15	Bath	9'5" x 7'4"	69 sq. ft	Yes
16	Hall	6'5" x 13'3"	85 sq. ft	Yes



## Room dimensions

Floor 4

Total:140sqft

Excluded: 291sqft

#		Dimensions	sqft	Counted as living area
17	Attic	18'0" x 11'2"	201 sq. ft	No
18	Room	12'5" x 14'4"	177 sq. ft	Yes

## 1 Floor 1 - Bath



Dimensions: 8'11" x 10'10"  
Area: 96 sq. ft  
Counted as living area: No

Heated: Yes  
Finished: Yes  
Enclosed: Yes  
Contiguous: No  
Permitted: Yes  
Wet space: Yes  
Addition: No  
Conversion: No

## 2 Floor 1 - Storage



Dimensions: 19'0" x 7'8"  
Area: 145 sq. ft  
Counted as living area: No

Heated: No  
Finished: No  
Enclosed: No  
Contiguous: Yes  
Permitted: Yes  
Wet space: No  
Addition: No  
Conversion: No

### 3 Floor 1 - Basement



Dimensions: 20'8" x 27'8"  
Area: 570 sq. ft  
Counted as living area: No

Heated: Yes  
Finished: Yes  
Enclosed: Yes  
Contiguous: No  
Permitted: Yes  
Wet space: No  
Addition: No  
Conversion: No

### 4 Floor 2 - Living Room



Dimensions: 12'8" x 13'6"  
Area: 170 sq. ft  
Counted as living area: Yes

Heated: Yes  
Finished: Yes  
Enclosed: Yes  
Contiguous: Yes  
Permitted: Yes  
Wet space: No  
Addition: No  
Conversion: No

### 5 Floor 2 - Covered Patio



Dimensions: 9'3" x 5'5"  
Area: 50 sq. ft  
Counted as living area: No

Heated: No  
Finished: No  
Enclosed: No  
Contiguous: Yes  
Permitted: Yes  
Wet space: No  
Addition: No  
Conversion: No

## 6 Floor 2 - Kitchen



Dimensions: 8'11" x 10'0"  
Area: 89 sq. ft  
Counted as living area: Yes

Heated: Yes  
Finished: Yes  
Enclosed: Yes  
Contiguous: Yes  
Permitted: Yes  
Wet space: No  
Addition: No  
Conversion: No



## 7 Floor 2 - Garage



Dimensions: 19'11" x 20'5"  
Area: 407 sq. ft  
Counted as living area: No

Heated: No  
Finished: No  
Enclosed: Yes  
Contiguous: Yes  
Permitted: Yes  
Wet space: No  
Addition: No  
Conversion: No



## 8 Floor 2 - Living Room



Dimensions: 12'8" x 16'3"  
Area: 205 sq. ft  
Counted as living area: Yes

Heated: Yes  
Finished: Yes  
Enclosed: Yes  
Contiguous: Yes  
Permitted: Yes  
Wet space: No  
Addition: No  
Conversion: No



## 9 Floor 2 - Porch



Dimensions: 18'10" x 7'5"  
Area: 140 sq. ft  
Counted as living area: No

Heated: No  
Finished: No  
Enclosed: No  
Contiguous: Yes  
Permitted: Yes  
Wet space: No  
Addition: No  
Conversion: No



## 10 Floor 2 - Breakfast Nook



Dimensions: 8'11" x 11'5"  
Area: 102 sq. ft  
Counted as living area: Yes

Heated: Yes  
Finished: Yes  
Enclosed: Yes  
Contiguous: Yes  
Permitted: Yes  
Wet space: No  
Addition: No  
Conversion: No



## 11 Floor 2 - Foyer

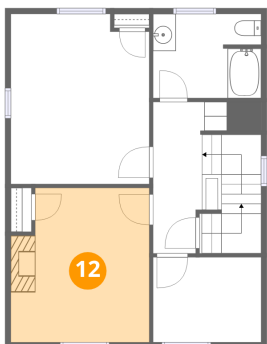


Dimensions: 8'11" x 14'5"  
Area: 128 sq. ft  
Counted as living area: Yes

Heated: Yes  
Finished: Yes  
Enclosed: Yes  
Contiguous: Yes  
Permitted: Yes  
Wet space: No  
Addition: No  
Conversion: No



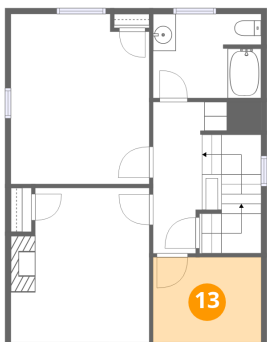
### 12 Floor 3 - Bedroom



Dimensions: 12'1" x 13'5"  
Area: 163 sq. ft  
Counted as living area: Yes

Heated: Yes  
Finished: Yes  
Enclosed: Yes  
Contiguous: Yes  
Permitted: Yes  
Wet space: No  
Addition: No  
Conversion: No

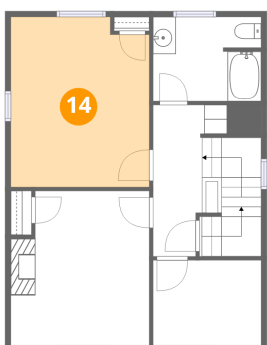
### 13 Floor 3 - Room



Dimensions: 9'5" x 7'5"  
Area: 70 sq. ft  
Counted as living area: Yes

Heated: Yes  
Finished: Yes  
Enclosed: Yes  
Contiguous: Yes  
Permitted: Yes  
Wet space: No  
Addition: No  
Conversion: No

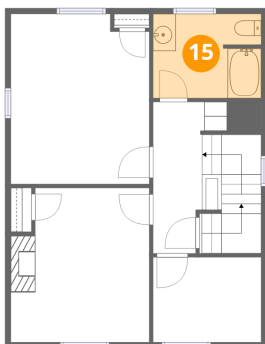
### 14 Floor 3 - Primary Bedroom



Dimensions: 12'1" x 14'10"  
Area: 180 sq. ft  
Counted as living area: Yes

Heated: Yes  
Finished: Yes  
Enclosed: Yes  
Contiguous: Yes  
Permitted: Yes  
Wet space: No  
Addition: No  
Conversion: No

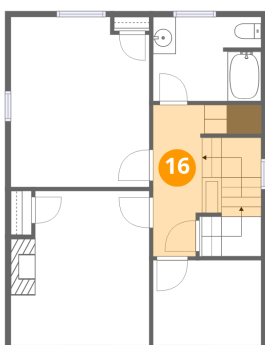
**15** Floor 3 - Bath



Dimensions: 9'5" x 7'4"  
Area: 69 sq. ft  
Counted as living area: Yes

Heated: Yes  
Finished: Yes  
Enclosed: Yes  
Contiguous: Yes  
Permitted: Yes  
Wet space: Yes  
Addition: No  
Conversion: No

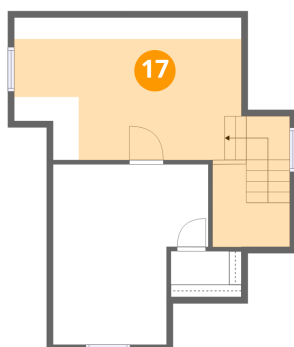
**16** Floor 3 - Hall



Dimensions: 6'5" x 13'3"  
Area: 85 sq. ft  
Counted as living area: Yes

Heated: Yes  
Finished: Yes  
Enclosed: Yes  
Contiguous: Yes  
Permitted: Yes  
Wet space: No  
Addition: No  
Conversion: No

**17** Floor 4 - Attic

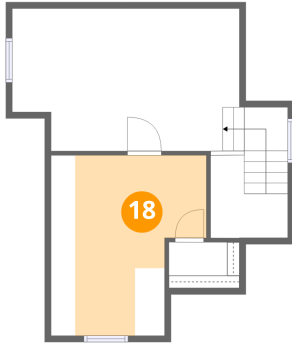


Dimensions: 18'0" x 11'2"  
Area: 201 sq. ft  
Counted as living area: No

Heated: No  
Finished: No  
Enclosed: Yes  
Contiguous: Yes  
Permitted: Yes  
Wet space: No  
Addition: No  
Conversion: No

**18** Floor 4 - Room

---



**Dimensions:** 12'5" x 14'4"  
**Area:** 177 sq. ft  
**Counted as living area:** Yes

**Heated:** Yes  
**Finished:** Yes  
**Enclosed:** Yes  
**Contiguous:** Yes  
**Permitted:** Yes  
**Wet space:** No  
**Addition:** No  
**Conversion:** No