

Home data report

8 Emmons Drive, Clifton Park, Saratoga County, New York,
United States, 12065



Total Area: 4090 sq. ft

1st Floor: 1010 sq. ft, 2nd Floor: 1507 sq. ft, 3rd Floor: 1573 sq. ft


Excluded: Room 215 sq. ft, Hall 29 sq. ft, Garage 425 sq. ft, Fireplace 8 sq. ft, Open to below 374 sq. ft, Walls: 309 sq. ft

Property summary



Home data report

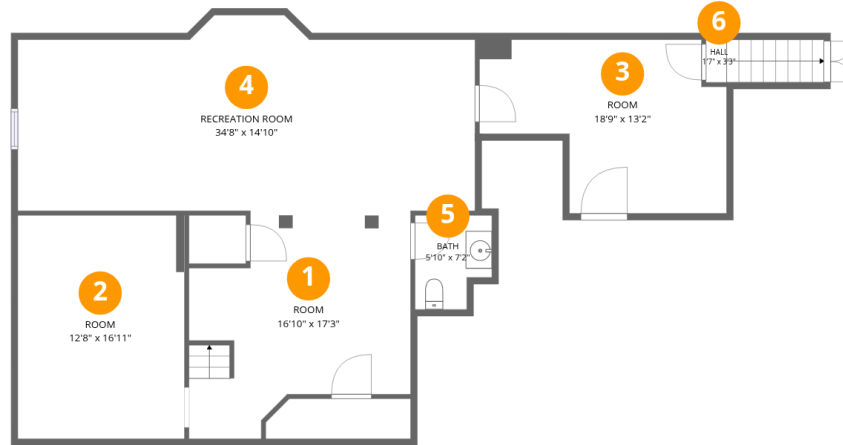
**8 Emmons Drive, Clifton Park, Saratoga County, New York,
United States, 12065**

 **2**
Half baths

 **1**
Garages

Home data report

8 Emmons Drive, Clifton Park, Saratoga County, New York, United States, 12065



Room dimensions

Floor 1

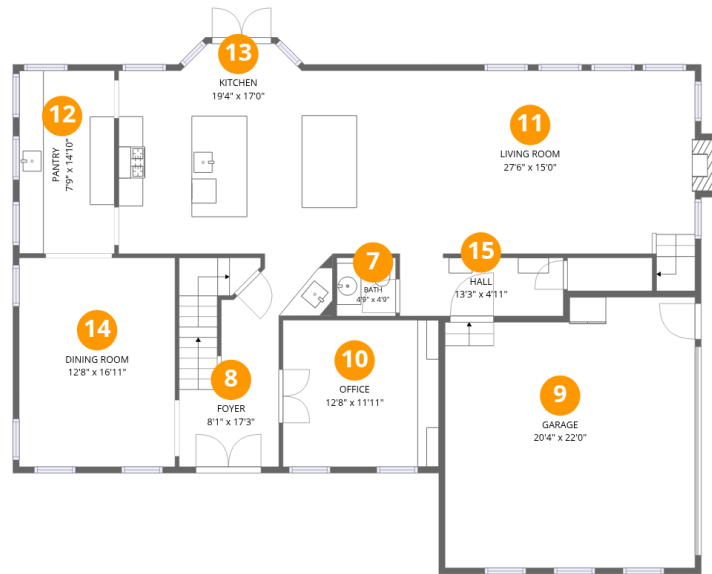
Total:1010sqft

Excluded: 244sqft

#		Dimensions	sqft	Counted as living area
1	Room	16'10" x 17'3"	232 sq. ft	Yes
2	Room	12'8" x 16'11"	215 sq. ft	No
3	Room	18'9" x 13'2"	199 sq. ft	Yes
4	Recreation Room	34'8" x 14'10"	464 sq. ft	Yes
5	Bath	5'10" x 7'2"	37 sq. ft	Yes
6	Hall	1'7" x 3'3"	29 sq. ft	No

Home data report

8 Emmons Drive, Clifton Park, Saratoga County, New York,
United States, 12065



Room dimensions

Floor 2

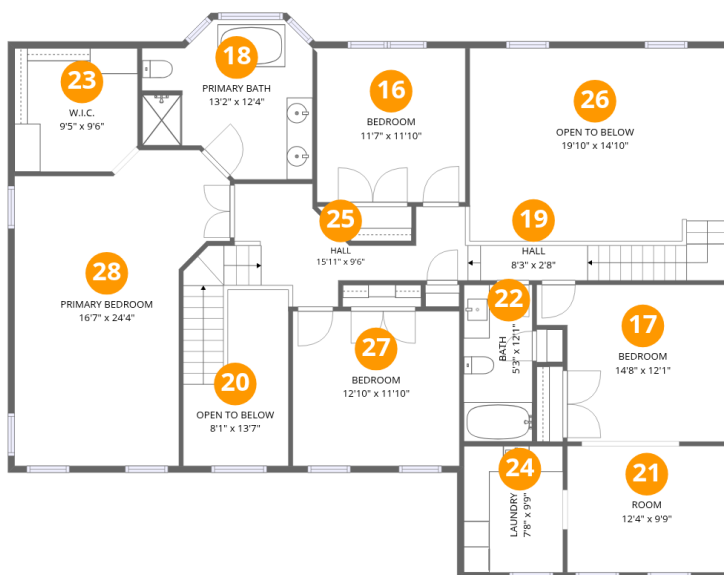
Total:1507sqft

Excluded: 433sqft

#		Dimensions	sqft	Counted as living area
7	Bath	4'9" x 4'9"	23 sq. ft	Yes
8	Foyer	8'1" x 17'3"	156 sq. ft	Yes
9	Garage	20'4" x 22'0"	425 sq. ft	No
10	Office	12'8" x 11'11"	151 sq. ft	Yes
11	Living Room	27'6" x 15'0"	425 sq. ft	Yes
12	Pantry	7'9" x 14'10"	115 sq. ft	Yes
13	Kitchen	19'4" x 17'0"	304 sq. ft	Yes
14	Dining Room	12'8" x 16'11"	215 sq. ft	Yes
15	Hall	13'3" x 4'11"	63 sq. ft	Yes

Home data report

8 Emmons Drive, Clifton Park, Saratoga County, New York, United States, 12065



Room dimensions

Floor 3

Total:1573sqft

Excluded: 374sqft

#		Dimensions	sqft	Counted as living area
16	Bedroom	11'7" x 11'10"	136 sq. ft	Yes
17	Bedroom	14'8" x 12'1"	156 sq. ft	Yes
18	Primary Bath	13'2" x 12'4"	133 sq. ft	Yes
19	Hall	8'3" x 2'8"	65 sq. ft	Yes
20	Open To Below	8'1" x 13'7"	85 sq. ft	No
21	Room	12'4" x 9'9"	120 sq. ft	Yes
22	Bath	5'3" x 12'1"	64 sq. ft	Yes
23	W.I.C.	9'5" x 9'6"	88 sq. ft	Yes
24	Laundry	7'8" x 9'9"	74 sq. ft	Yes
25	Hall	15'11" x 9'6"	141 sq. ft	Yes
26	Open To Below	19'10" x 14'10"	289 sq. ft	No

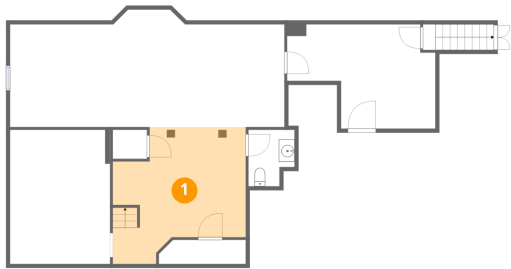
Home data report

**8 Emmons Drive, Clifton Park, Saratoga County, New York,
United States, 12065**

#		Dimensions	sqft	Counted as living area
27	Bedroom	12'10" x 11'10"	153 sq. ft	Yes
28	Primary Bedroom	16'7" x 24'4"	317 sq. ft	Yes

8 Emmons Drive, Clifton Park, Saratoga County, New York,
United States, 12065

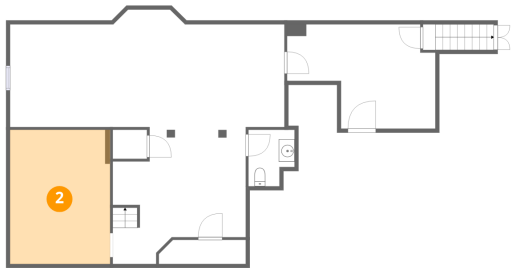
1 Floor 1 - Room



Dimensions: 16'10" x 17'3"
Area: 232 sq. ft
Counted as living area: Yes

Heated: Yes
Finished: Yes
Enclosed: Yes
Contiguous: Yes
Permitted: Yes
Wet space: No
Addition: No
Conversion: No

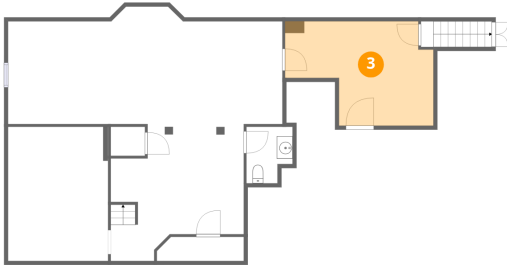
2 Floor 1 - Room



Dimensions: 12'8" x 16'11"
Area: 215 sq. ft
Counted as living area: No

Heated: Yes
Finished: No
Enclosed: Yes
Contiguous: Yes
Permitted: Yes
Wet space: No
Addition: No
Conversion: No

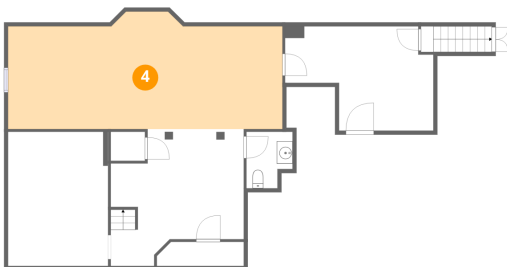
3 Floor 1 - Room



Dimensions: 18'9" x 13'2"
Area: 199 sq. ft
Counted as living area: Yes

Heated: Yes
Finished: Yes
Enclosed: Yes
Contiguous: Yes
Permitted: Yes
Wet space: No
Addition: No
Conversion: No

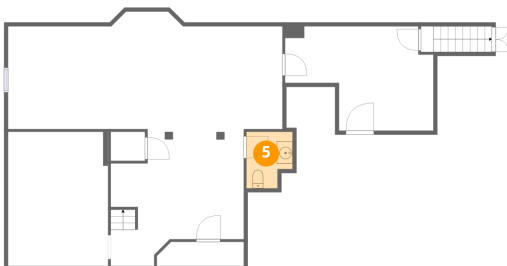
4 Floor 1 - Recreation Room



Dimensions: 34'8" x 14'10"
Area: 464 sq. ft
Counted as living area: Yes

Heated: Yes
Finished: Yes
Enclosed: Yes
Contiguous: Yes
Permitted: Yes
Wet space: No
Addition: No
Conversion: No

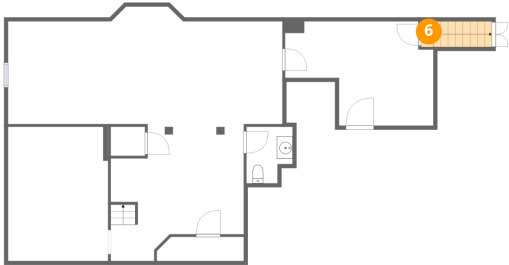
5 Floor 1 - Bath



Dimensions: 5'10" x 7'2"
Area: 37 sq. ft
Counted as living area: Yes

Heated: Yes
Finished: Yes
Enclosed: Yes
Contiguous: Yes
Permitted: Yes
Wet space: Yes
Addition: No
Conversion: No

6 Floor 1 - Hall



Dimensions: 1'7" x 3'3"
Area: 29 sq. ft
Counted as living area: No

Heated: Yes
Finished: No
Enclosed: Yes
Contiguous: Yes
Permitted: Yes
Wet space: No
Addition: No
Conversion: No

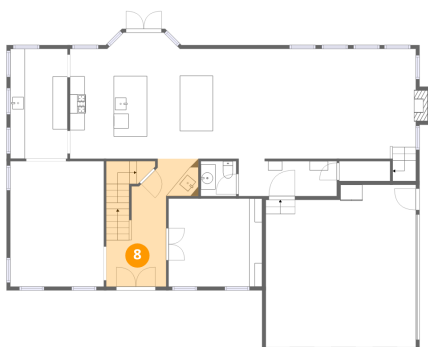
7 Floor 2 - Bath



Dimensions: 4'9" x 4'9"
Area: 23 sq. ft
Counted as living area: Yes

Heated: Yes
Finished: Yes
Enclosed: Yes
Contiguous: Yes
Permitted: Yes
Wet space: Yes
Addition: No
Conversion: No

8 Floor 2 - Foyer



Dimensions: 8'1" x 17'3"
Area: 156 sq. ft
Counted as living area: Yes

Heated: Yes
Finished: Yes
Enclosed: Yes
Contiguous: Yes
Permitted: Yes
Wet space: No
Addition: No
Conversion: No

9 Floor 2 - Garage



Dimensions: 20'4" x 22'0"
Area: 425 sq. ft
Counted as living area: No

Heated: No
Finished: No
Enclosed: Yes
Contiguous: Yes
Permitted: Yes
Wet space: No
Addition: No
Conversion: No

10 Floor 2 - Office



Dimensions: 12'8" x 11'11"
Area: 151 sq. ft
Counted as living area: Yes

Heated: Yes
Finished: Yes
Enclosed: Yes
Contiguous: Yes
Permitted: Yes
Wet space: No
Addition: No
Conversion: No

11 Floor 2 - Living Room



Dimensions: 27'6" x 15'0"
Area: 425 sq. ft
Counted as living area: Yes

Heated: Yes
Finished: Yes
Enclosed: Yes
Contiguous: Yes
Permitted: Yes
Wet space: No
Addition: No
Conversion: No

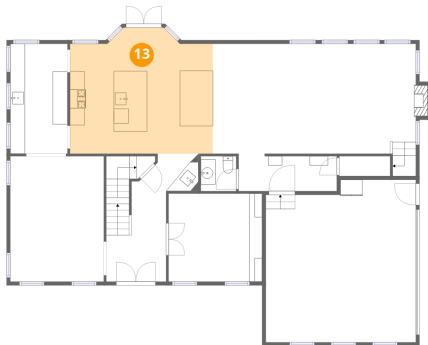
12 Floor 2 - Pantry



Dimensions: 7'9" x 14'10"
Area: 115 sq. ft
Counted as living area: Yes

Heated: Yes
Finished: Yes
Enclosed: Yes
Contiguous: Yes
Permitted: Yes
Wet space: No
Addition: No
Conversion: No

13 Floor 2 - Kitchen



Dimensions: 19'4" x 17'0"
Area: 304 sq. ft
Counted as living area: Yes

Heated: Yes
Finished: Yes
Enclosed: Yes
Contiguous: Yes
Permitted: Yes
Wet space: No
Addition: No
Conversion: No

14 Floor 2 - Dining Room

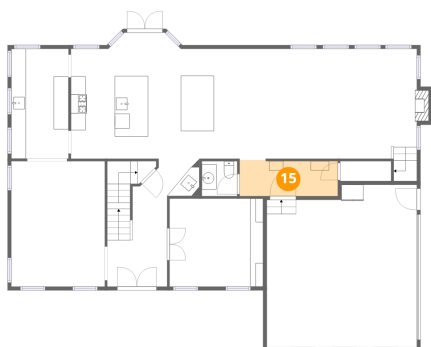


Dimensions: 12'8" x 16'11"
Area: 215 sq. ft
Counted as living area: Yes

Heated: Yes
Finished: Yes
Enclosed: Yes
Contiguous: Yes
Permitted: Yes
Wet space: No
Addition: No
Conversion: No

8 Emmons Drive, Clifton Park, Saratoga County, New York,
United States, 12065

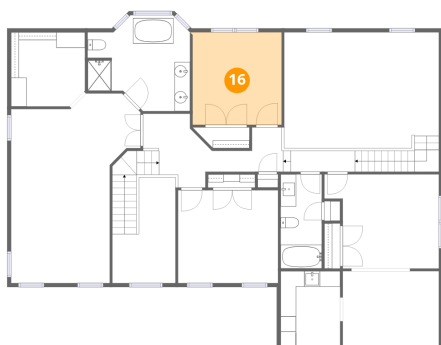
15 Floor 2 - Hall



Dimensions: 13'3" x 4'11"
Area: 63 sq. ft
Counted as living area: Yes

Heated: Yes
Finished: Yes
Enclosed: Yes
Contiguous: Yes
Permitted: Yes
Wet space: No
Addition: No
Conversion: No

16 Floor 3 - Bedroom



Dimensions: 11'7" x 11'10"
Area: 136 sq. ft
Counted as living area: Yes

Heated: Yes
Finished: Yes
Enclosed: Yes
Contiguous: Yes
Permitted: Yes
Wet space: No
Addition: No
Conversion: No

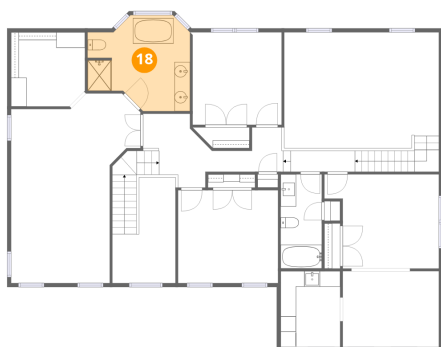
17 Floor 3 - Bedroom



Dimensions: 14'8" x 12'1"
Area: 156 sq. ft
Counted as living area: Yes

Heated: Yes
Finished: Yes
Enclosed: Yes
Contiguous: Yes
Permitted: Yes
Wet space: No
Addition: No
Conversion: No

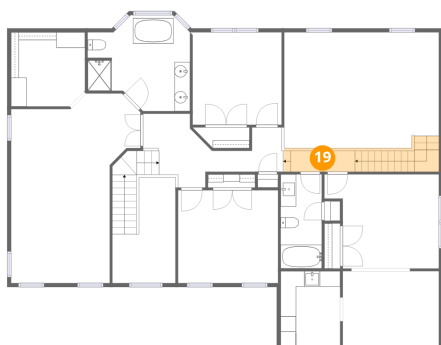
18 Floor 3 - Primary Bath



Dimensions: 13'2" x 12'4"
Area: 133 sq. ft
Counted as living area: Yes

Heated: Yes
Finished: Yes
Enclosed: Yes
Contiguous: Yes
Permitted: Yes
Wet space: Yes
Addition: No
Conversion: No

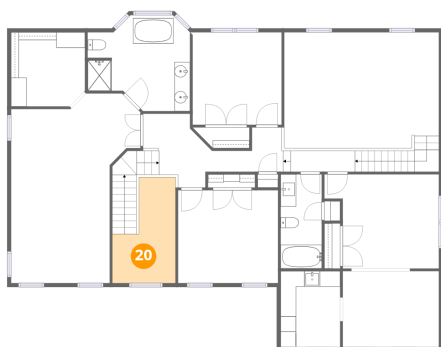
19 Floor 3 - Hall



Dimensions: 8'3" x 2'8"
Area: 65 sq. ft
Counted as living area: Yes

Heated: Yes
Finished: Yes
Enclosed: Yes
Contiguous: Yes
Permitted: Yes
Wet space: No
Addition: No
Conversion: No

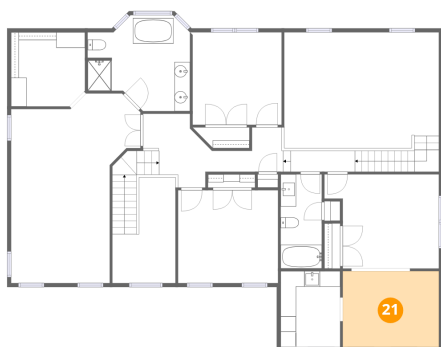
20 Floor 3 - Open To Below



Dimensions: 8'1" x 13'7"
Area: 85 sq. ft
Counted as living area: No

Heated: No
Finished: No
Enclosed: No
Contiguous: Yes
Permitted: No
Wet space: No
Addition: No
Conversion: No

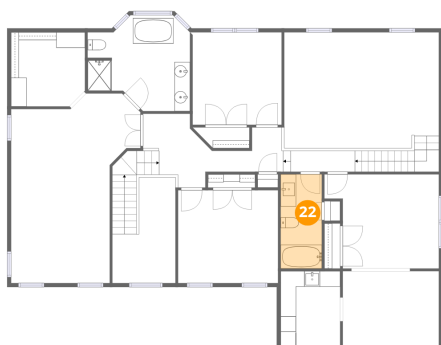
21 Floor 3 - Room



Dimensions: 12'4" x 9'9"
Area: 120 sq. ft
Counted as living area: Yes

Heated: Yes
Finished: Yes
Enclosed: Yes
Contiguous: Yes
Permitted: Yes
Wet space: No
Addition: No
Conversion: No

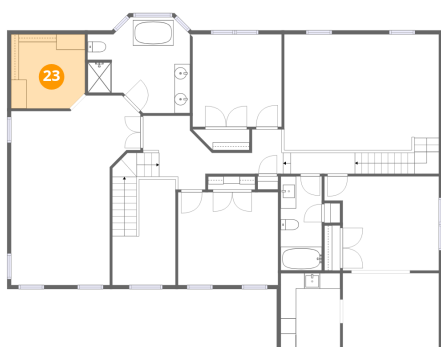
22 Floor 3 - Bath



Dimensions: 5'3" x 12'1"
Area: 64 sq. ft
Counted as living area: Yes

Heated: Yes
Finished: Yes
Enclosed: Yes
Contiguous: Yes
Permitted: Yes
Wet space: Yes
Addition: No
Conversion: No

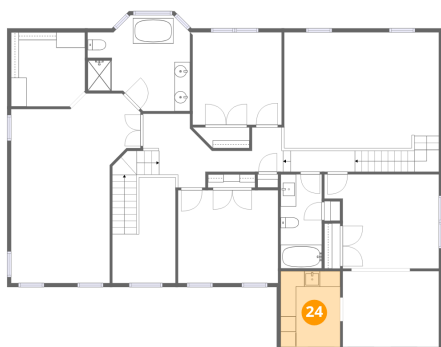
23 Floor 3 - W.I.C.



Dimensions: 9'5" x 9'6"
Area: 88 sq. ft
Counted as living area: Yes

Heated: Yes
Finished: Yes
Enclosed: Yes
Contiguous: Yes
Permitted: Yes
Wet space: No
Addition: No
Conversion: No

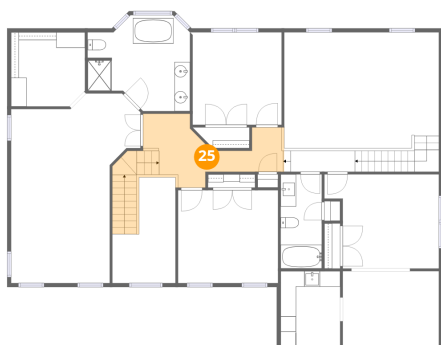
24 Floor 3 - Laundry



Dimensions: 7'8" x 9'9"
Area: 74 sq. ft
Counted as living area: Yes

Heated: Yes
Finished: Yes
Enclosed: Yes
Contiguous: Yes
Permitted: Yes
Wet space: No
Addition: No
Conversion: No

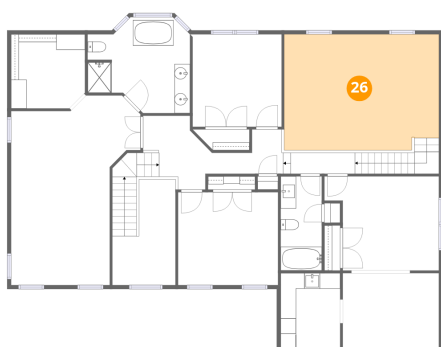
25 Floor 3 - Hall



Dimensions: 15'11" x 9'6"
Area: 141 sq. ft
Counted as living area: Yes

Heated: Yes
Finished: Yes
Enclosed: Yes
Contiguous: Yes
Permitted: Yes
Wet space: No
Addition: No
Conversion: No

26 Floor 3 - Open To Below



Dimensions: 19'10" x 14'10"
Area: 289 sq. ft
Counted as living area: No

Heated: No
Finished: No
Enclosed: No
Contiguous: Yes
Permitted: No
Wet space: No
Addition: No
Conversion: No

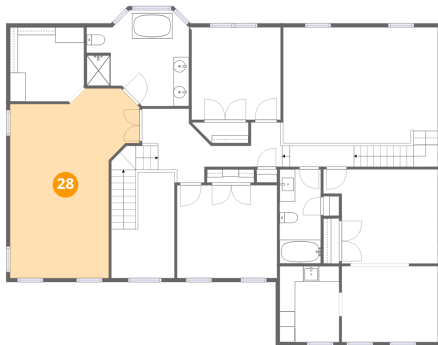
27 Floor 3 - Bedroom



Dimensions: 12'10" x 11'10"
Area: 153 sq. ft
Counted as living area: Yes

Heated: Yes
Finished: Yes
Enclosed: Yes
Contiguous: Yes
Permitted: Yes
Wet space: No
Addition: No
Conversion: No

28 Floor 3 - Primary Bedroom



Dimensions: 16'7" x 24'4"
Area: 317 sq. ft
Counted as living area: Yes

Heated: Yes
Finished: Yes
Enclosed: Yes
Contiguous: Yes
Permitted: Yes
Wet space: No
Addition: No
Conversion: No