

Room dimensions

Floor 1

Total: 2102 sqft

Excluded: 400 sqft

#		Dimensions	sqft	Counted as living area
1	Bath	3'3" x 5'9"	19 sq. ft	Yes
2	Bath	5'2" x 8'5"	43 sq. ft	Yes
3	Primary Bedroom	15'3" x 21'5"	256 sq. ft	Yes
4	Foyer	16'9" x 12'4"	130 sq. ft	Yes
5	Hall	6'4" x 11'5"	72 sq. ft	Yes
6	Living Room	23'5" x 21'0"	491 sq. ft	Yes
7	Bedroom	9'10" x 14'3"	140 sq. ft	Yes
8	Hall	4'2" x 12'0"	50 sq. ft	Yes
9	W.I.C.	10'10" x 5'8"	62 sq. ft	Yes
10	Bedroom	10'4" x 14'3"	132 sq. ft	Yes
11	Primary Bath	10'10" x 12'6"	113 sq. ft	Yes

Home data report

5812 Lady Bells Dr,Santa Maria,CA,US

#		Dimensions	sqft	Counted as living area
12	W.I.C.	5'2" x 5'6"	28 sq. ft	Yes
13	Laundry	6'4" x 8'6"	54 sq. ft	Yes
14	Bedroom	10'0" x 14'3"	127 sq. ft	Yes
15	Garage	19'11" x 20'1"	400 sq. ft	No
16	Bath	10'4" x 5'8"	59 sq. ft	Yes
17	Eat-in Kitchen	10'4" x 20'11"	216 sq. ft	Yes

1 Floor 1 - Bath



Dimensions: 3'3" x 5'9"
Area: 19 sq. ft
Counted as living area: Yes

Heated: Yes
Finished: Yes
Enclosed: Yes
Contiguous: Yes
Permitted: Yes
Wet space: Yes
Addition: No
Conversion: No

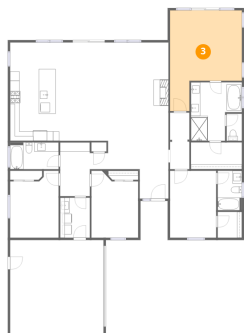
2 Floor 1 - Bath



Dimensions: 5'2" x 8'5"
Area: 43 sq. ft
Counted as living area: Yes

Heated: Yes
Finished: Yes
Enclosed: Yes
Contiguous: Yes
Permitted: Yes
Wet space: Yes
Addition: No
Conversion: No

3 Floor 1 - Primary Bedroom



Dimensions: 15'3" x 21'5"
Area: 256 sq. ft
Counted as living area: Yes

Heated: Yes
Finished: Yes
Enclosed: Yes
Contiguous: Yes
Permitted: Yes
Wet space: No
Addition: No
Conversion: No

4 Floor 1 - Foyer



Dimensions: 16'9" x 12'4"
Area: 130 sq. ft
Counted as living area: Yes

Heated: Yes
Finished: Yes
Enclosed: Yes
Contiguous: Yes
Permitted: Yes
Wet space: No
Addition: No
Conversion: No

5 Floor 1 - Hall



Dimensions: 6'4" x 11'5"
Area: 72 sq. ft
Counted as living area: Yes

Heated: Yes
Finished: Yes
Enclosed: Yes
Contiguous: Yes
Permitted: Yes
Wet space: No
Addition: No
Conversion: No

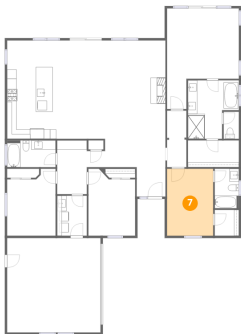
6 Floor 1 - Living Room



Dimensions: 23'5" x 21'0"
Area: 491 sq. ft
Counted as living area: Yes

Heated: Yes
Finished: Yes
Enclosed: Yes
Contiguous: Yes
Permitted: Yes
Wet space: No
Addition: No
Conversion: No

7 Floor 1 - Bedroom



Dimensions: 9'10" x 14'3"
Area: 140 sq. ft
Counted as living area: Yes

Heated: Yes
Finished: Yes
Enclosed: Yes
Contiguous: Yes
Permitted: Yes
Wet space: No
Addition: No
Conversion: No

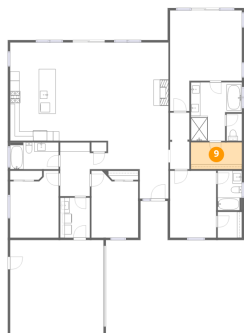
8 Floor 1 - Hall



Dimensions: 4'2" x 12'0"
Area: 50 sq. ft
Counted as living area: Yes

Heated: Yes
Finished: Yes
Enclosed: Yes
Contiguous: Yes
Permitted: Yes
Wet space: No
Addition: No
Conversion: No

9 Floor 1 - W.I.C.



Dimensions: 10'10" x 5'8"
Area: 62 sq. ft
Counted as living area: Yes

Heated: Yes
Finished: Yes
Enclosed: Yes
Contiguous: Yes
Permitted: Yes
Wet space: No
Addition: No
Conversion: No

10 Floor 1 - Bedroom



Dimensions: 10'4" x 14'3"
Area: 132 sq. ft
Counted as living area: Yes

Heated: Yes
Finished: Yes
Enclosed: Yes
Contiguous: Yes
Permitted: Yes
Wet space: No
Addition: No
Conversion: No

11 Floor 1 - Primary Bath



Dimensions: 10'10" x 12'6"
Area: 113 sq. ft
Counted as living area: Yes

Heated: Yes
Finished: Yes
Enclosed: Yes
Contiguous: Yes
Permitted: Yes
Wet space: Yes
Addition: No
Conversion: No

12 Floor 1 - W.I.C.



Dimensions: 5'2" x 5'6"
Area: 28 sq. ft
Counted as living area: Yes

Heated: Yes
Finished: Yes
Enclosed: Yes
Contiguous: Yes
Permitted: Yes
Wet space: No
Addition: No
Conversion: No

13 Floor 1 - Laundry



Dimensions: 6'4" x 8'6"
Area: 54 sq. ft
Counted as living area: Yes

Heated: Yes
Finished: Yes
Enclosed: Yes
Contiguous: Yes
Permitted: Yes
Wet space: No
Addition: No
Conversion: No

14 Floor 1 - Bedroom



Dimensions: 10'0" x 14'3"
Area: 127 sq. ft
Counted as living area: Yes

Heated: Yes
Finished: Yes
Enclosed: Yes
Contiguous: Yes
Permitted: Yes
Wet space: No
Addition: No
Conversion: No

15 Floor 1 - Garage



Dimensions: 19'11" x 20'1"
Area: 400 sq. ft
Counted as living area: No

Heated: No
Finished: No
Enclosed: Yes
Contiguous: Yes
Permitted: Yes
Wet space: No
Addition: No
Conversion: No

16 Floor 1 - Bath



Dimensions: 10'4" x 5'8"
Area: 59 sq. ft
Counted as living area: Yes

Heated: Yes
Finished: Yes
Enclosed: Yes
Contiguous: Yes
Permitted: Yes
Wet space: Yes
Addition: No
Conversion: No

17 Floor 1 - Eat-in Kitchen



Dimensions: 10'4" x 20'11"
Area: 216 sq. ft
Counted as living area: Yes

Heated: Yes
Finished: Yes
Enclosed: Yes
Contiguous: Yes
Permitted: Yes
Wet space: No
Addition: No
Conversion: No