

Home data report

# 611 Forest Lake Dr, Seabrook, TX, US



1st floor

**Total Area: 2348 sq. ft**

1st Floor: 2348 sq. ft

Excluded: Walls: 138 sq. ft

## Property summary



**1** Floors



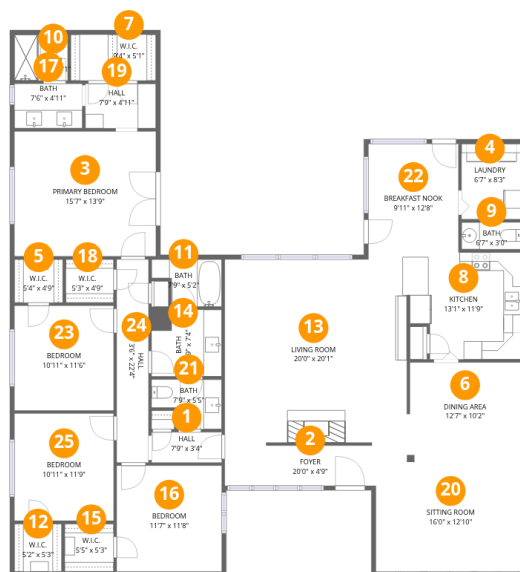
**4** Bedrooms



**2** Bathrooms



**1** Half baths



## Room dimensions

Floor 1

Total:2348sqft Excluded: 0sqft

| #  |                 | Dimensions    | sqft       | Counted as living area |
|----|-----------------|---------------|------------|------------------------|
| 1  | Hall            | 7'9" x 3'4"   | 26 sq. ft  | Yes                    |
| 2  | Foyer           | 20'0" x 4'9"  | 89 sq. ft  | Yes                    |
| 3  | Primary Bedroom | 15'7" x 13'9" | 213 sq. ft | Yes                    |
| 4  | Laundry         | 6'7" x 8'3"   | 55 sq. ft  | Yes                    |
| 5  | W.I.C.          | 5'4" x 4'9"   | 25 sq. ft  | Yes                    |
| 6  | Dining Area     | 12'7" x 10'2" | 126 sq. ft | Yes                    |
| 7  | W.I.C.          | 9'4" x 5'1"   | 47 sq. ft  | Yes                    |
| 8  | Kitchen         | 13'1" x 11'9" | 136 sq. ft | Yes                    |
| 9  | Bath            | 6'7" x 3'0"   | 20 sq. ft  | Yes                    |
| 10 | Bath            | 5'10" x 5'1"  | 30 sq. ft  | Yes                    |
| 11 | Bath            | 7'9" x 5'2"   | 33 sq. ft  | Yes                    |

Home data report

611 Forest Lake Dr,Seabrook,TX,US

| #  |                | Dimensions     | sqft       | Counted as living area |
|----|----------------|----------------|------------|------------------------|
| 12 | W.I.C.         | 5'2" x 5'3"    | 27 sq. ft  | Yes                    |
| 13 | Living Room    | 20'0" x 20'1"  | 401 sq. ft | Yes                    |
| 14 | Bath           | 7'9" x 7'4"    | 51 sq. ft  | Yes                    |
| 15 | W.I.C.         | 5'5" x 5'3"    | 28 sq. ft  | Yes                    |
| 16 | Bedroom        | 11'7" x 11'8"  | 134 sq. ft | Yes                    |
| 17 | Bath           | 7'6" x 4'11"   | 37 sq. ft  | Yes                    |
| 18 | W.I.C.         | 5'3" x 4'9"    | 25 sq. ft  | Yes                    |
| 19 | Hall           | 7'9" x 4'11"   | 38 sq. ft  | Yes                    |
| 20 | Sitting Room   | 16'0" x 12'10" | 199 sq. ft | Yes                    |
| 21 | Bath           | 7'9" x 5'5"    | 35 sq. ft  | Yes                    |
| 22 | Breakfast Nook | 9'11" x 12'8"  | 124 sq. ft | Yes                    |
| 23 | Bedroom        | 10'11" x 11'6" | 125 sq. ft | Yes                    |
| 24 | Hall           | 3'6" x 22'4"   | 78 sq. ft  | Yes                    |
| 25 | Bedroom        | 10'11" x 11'9" | 128 sq. ft | Yes                    |

## 1 Floor 1 - Hall



Dimensions: 7'9" x 3'4"  
Area: 26 sq. ft  
Counted as living area: Yes

Heated: Yes  
Finished: Yes  
Enclosed: Yes  
Contiguous: Yes  
Permitted: Yes  
Wet space: No  
Addition: No  
Conversion: No

## 2 Floor 1 - Foyer



Dimensions: 20'0" x 4'9"  
Area: 89 sq. ft  
Counted as living area: Yes

Heated: Yes  
Finished: Yes  
Enclosed: Yes  
Contiguous: Yes  
Permitted: Yes  
Wet space: No  
Addition: No  
Conversion: No

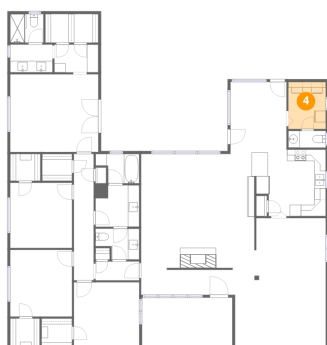
### 3 Floor 1 - Primary Bedroom



Dimensions: 15'7" x 13'9"  
Area: 213 sq. ft  
Counted as living area: Yes

Heated: Yes  
Finished: Yes  
Enclosed: Yes  
Contiguous: Yes  
Permitted: Yes  
Wet space: No  
Addition: No  
Conversion: No

### 4 Floor 1 - Laundry



Dimensions: 6'7" x 8'3"  
Area: 55 sq. ft  
Counted as living area: Yes

Heated: Yes  
Finished: Yes  
Enclosed: Yes  
Contiguous: Yes  
Permitted: Yes  
Wet space: No  
Addition: No  
Conversion: No

### 5 Floor 1 - W.I.C.



Dimensions: 5'4" x 4'9"  
Area: 25 sq. ft  
Counted as living area: Yes

Heated: Yes  
Finished: Yes  
Enclosed: Yes  
Contiguous: Yes  
Permitted: Yes  
Wet space: No  
Addition: No  
Conversion: No

## 6 Floor 1 - Dining Area



Dimensions: 12'7" x 10'2"  
Area: 126 sq. ft  
Counted as living area: Yes

Heated: Yes  
Finished: Yes  
Enclosed: Yes  
Contiguous: Yes  
Permitted: Yes  
Wet space: No  
Addition: No  
Conversion: No

## 7 Floor 1 - W.I.C.



Dimensions: 9'4" x 5'1"  
Area: 47 sq. ft  
Counted as living area: Yes

Heated: Yes  
Finished: Yes  
Enclosed: Yes  
Contiguous: Yes  
Permitted: Yes  
Wet space: No  
Addition: No  
Conversion: No

## 8 Floor 1 - Kitchen



Dimensions: 13'1" x 11'9"  
Area: 136 sq. ft  
Counted as living area: Yes

Heated: Yes  
Finished: Yes  
Enclosed: Yes  
Contiguous: Yes  
Permitted: Yes  
Wet space: No  
Addition: No  
Conversion: No

**9** Floor 1 - Bath



Dimensions: 6'7" x 3'0"  
Area: 20 sq. ft  
Counted as living area: Yes

Heated: Yes  
Finished: Yes  
Enclosed: Yes  
Contiguous: Yes  
Permitted: Yes  
Wet space: Yes  
Addition: No  
Conversion: No

**10** Floor 1 - Bath



Dimensions: 5'10" x 5'1"  
Area: 30 sq. ft  
Counted as living area: Yes

Heated: Yes  
Finished: Yes  
Enclosed: Yes  
Contiguous: Yes  
Permitted: Yes  
Wet space: Yes  
Addition: No  
Conversion: No

**11** Floor 1 - Bath



Dimensions: 7'9" x 5'2"  
Area: 33 sq. ft  
Counted as living area: Yes

Heated: Yes  
Finished: Yes  
Enclosed: Yes  
Contiguous: Yes  
Permitted: Yes  
Wet space: Yes  
Addition: No  
Conversion: No

**12** Floor 1 - W.I.C.



Dimensions: 5'2" x 5'3"  
Area: 27 sq. ft  
Counted as living area: Yes

Heated: Yes  
Finished: Yes  
Enclosed: Yes  
Contiguous: Yes  
Permitted: Yes  
Wet space: No  
Addition: No  
Conversion: No

**13** Floor 1 - Living Room



Dimensions: 20'0" x 20'1"  
Area: 401 sq. ft  
Counted as living area: Yes

Heated: Yes  
Finished: Yes  
Enclosed: Yes  
Contiguous: Yes  
Permitted: Yes  
Wet space: No  
Addition: No  
Conversion: No

**14** Floor 1 - Bath



Dimensions: 7'9" x 7'4"  
Area: 51 sq. ft  
Counted as living area: Yes

Heated: Yes  
Finished: Yes  
Enclosed: Yes  
Contiguous: Yes  
Permitted: Yes  
Wet space: Yes  
Addition: No  
Conversion: No

**15** Floor 1 - W.I.C.



Dimensions: 5'5" x 5'3"  
Area: 28 sq. ft  
Counted as living area: Yes

Heated: Yes  
Finished: Yes  
Enclosed: Yes  
Contiguous: Yes  
Permitted: Yes  
Wet space: No  
Addition: No  
Conversion: No

**16** Floor 1 - Bedroom



Dimensions: 11'7" x 11'8"  
Area: 134 sq. ft  
Counted as living area: Yes

Heated: Yes  
Finished: Yes  
Enclosed: Yes  
Contiguous: Yes  
Permitted: Yes  
Wet space: No  
Addition: No  
Conversion: No

**17** Floor 1 - Bath



Dimensions: 7'6" x 4'11"  
Area: 37 sq. ft  
Counted as living area: Yes

Heated: Yes  
Finished: Yes  
Enclosed: Yes  
Contiguous: Yes  
Permitted: Yes  
Wet space: Yes  
Addition: No  
Conversion: No

**18** Floor 1 - W.I.C.



Dimensions: 5'3" x 4'9"  
Area: 25 sq. ft  
Counted as living area: Yes

Heated: Yes  
Finished: Yes  
Enclosed: Yes  
Contiguous: Yes  
Permitted: Yes  
Wet space: No  
Addition: No  
Conversion: No

**19** Floor 1 - Hall



Dimensions: 7'9" x 4'11"  
Area: 38 sq. ft  
Counted as living area: Yes

Heated: Yes  
Finished: Yes  
Enclosed: Yes  
Contiguous: Yes  
Permitted: Yes  
Wet space: No  
Addition: No  
Conversion: No

**20** Floor 1 - Sitting Room



Dimensions: 16'0" x 12'10"  
Area: 199 sq. ft  
Counted as living area: Yes

Heated: Yes  
Finished: Yes  
Enclosed: Yes  
Contiguous: Yes  
Permitted: Yes  
Wet space: No  
Addition: No  
Conversion: No

### 21 Floor 1 - Bath



Dimensions: 7'9" x 5'5"  
Area: 35 sq. ft  
Counted as living area: Yes

Heated: Yes  
Finished: Yes  
Enclosed: Yes  
Contiguous: Yes  
Permitted: Yes  
Wet space: Yes  
Addition: No  
Conversion: No

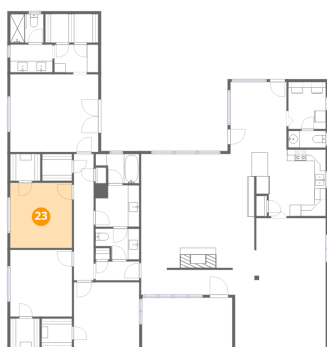
### 22 Floor 1 - Breakfast Nook



Dimensions: 9'11" x 12'8"  
Area: 124 sq. ft  
Counted as living area: Yes

Heated: Yes  
Finished: Yes  
Enclosed: Yes  
Contiguous: Yes  
Permitted: Yes  
Wet space: No  
Addition: No  
Conversion: No

### 23 Floor 1 - Bedroom



Dimensions: 10'11" x 11'6"  
Area: 125 sq. ft  
Counted as living area: Yes

Heated: Yes  
Finished: Yes  
Enclosed: Yes  
Contiguous: Yes  
Permitted: Yes  
Wet space: No  
Addition: No  
Conversion: No

**24** Floor 1 - Hall



Dimensions: 3'6" x 22'4"  
Area: 78 sq. ft  
Counted as living area: Yes

Heated: Yes  
Finished: Yes  
Enclosed: Yes  
Contiguous: Yes  
Permitted: Yes  
Wet space: No  
Addition: No  
Conversion: No

**25** Floor 1 - Bedroom



Dimensions: 10'11" x 11'9"  
Area: 128 sq. ft  
Counted as living area: Yes

Heated: Yes  
Finished: Yes  
Enclosed: Yes  
Contiguous: Yes  
Permitted: Yes  
Wet space: No  
Addition: No  
Conversion: No