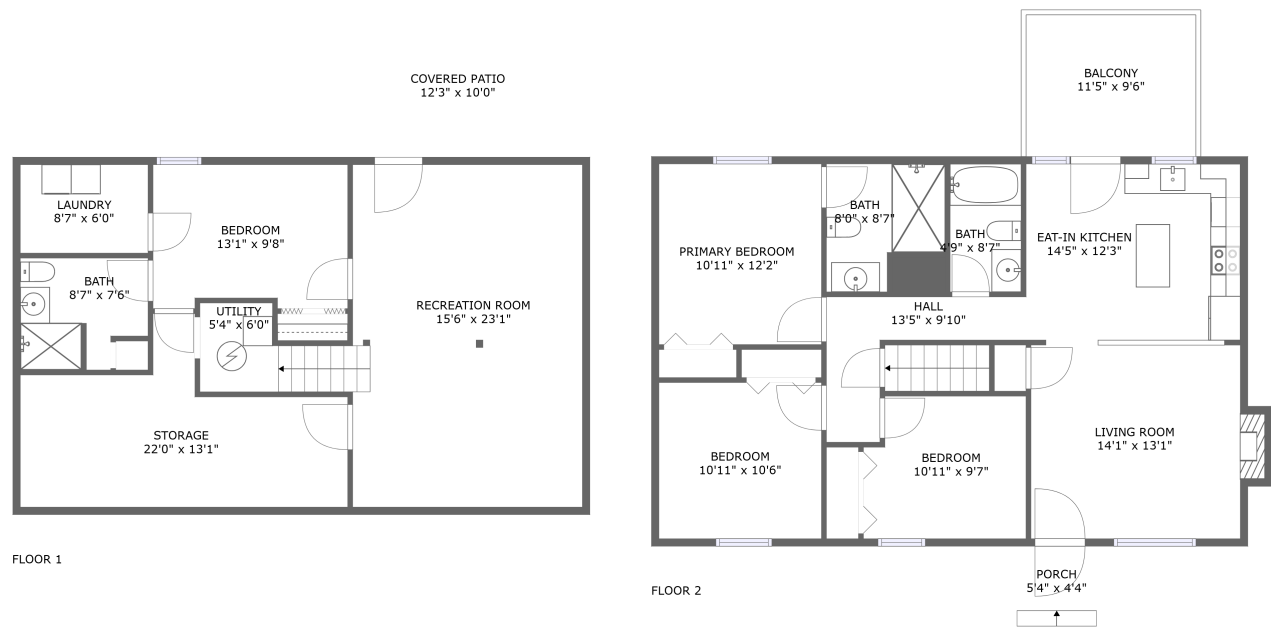


Home report

4070 Pitzer Road, Roanoke, Roanoke County, Virginia, United States, 24014



Total Area: 1639 sq. ft

Below Ground: 647 sq. ft, Floor 2: 992 sq. ft

Excluded: Covered patio 123 sq. ft, Storage 197 sq. ft, Utility 31 sq. ft, Balcony 109 sq. ft, Porch 23 sq. ft, Fireplace 9 sq. ft, Walls: 124 sq. ft

Property summary

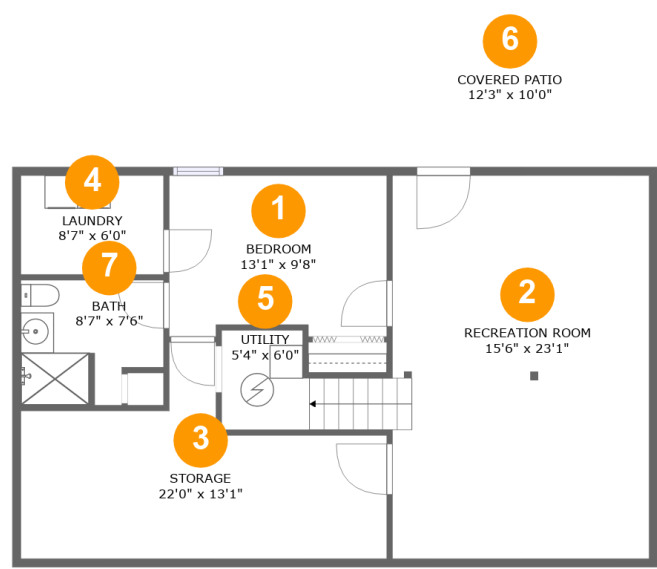
 **2** Floors

 **4** Bedrooms

 **3** Bathrooms

Home report

4070 Pitzer Road, Roanoke, Roanoke County, Virginia, United States, 24014



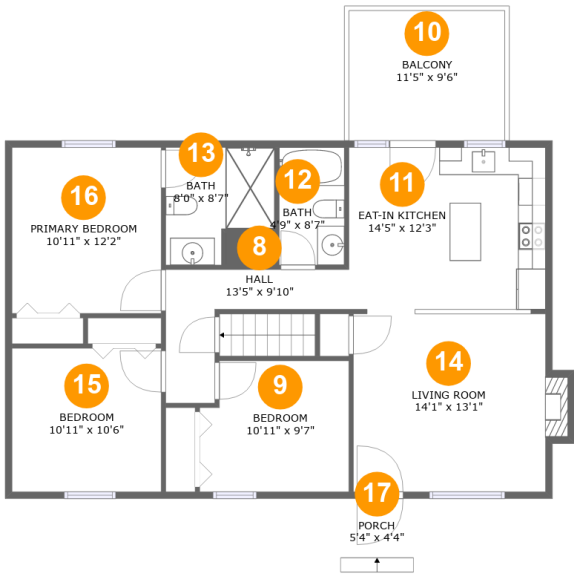
Room dimensions

Floor 1 Below ground Total:647sqft Excluded: 351sqft

#		Max Dimensions	sqft	Included
1	Bedroom	13'1" x 9'8"	123 sq. ft	Yes
2	Recreation Room	15'6" x 23'1"	373 sq. ft	Yes
3	Storage	22'0" x 13'1"	193 sq. ft	No
4	Laundry	8'7" x 6'0"	51 sq. ft	Yes
5	Utility	5'4" x 6'0"	31 sq. ft	No
6	Covered Patio	12'3" x 10'0"	123 sq. ft	No
7	Bath	8'7" x 7'6"	58 sq. ft	Yes

Home report

4070 Pitzer Road, Roanoke, Roanoke County, Virginia, United States, 24014



Room dimensions

Floor 2

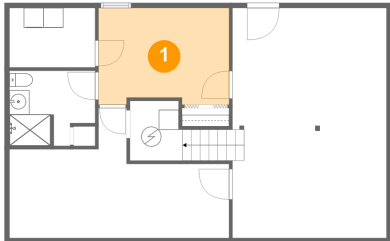
Total:992sqft

Excluded: 141sqft

#		Max Dimensions	sqft	Included
8	Hall	13'5" x 9'10"	64 sq. ft	Yes
9	Bedroom	10'11" x 9'7"	100 sq. ft	Yes
10	Balcony	11'5" x 9'6"	109 sq. ft	No
11	Eat-in Kitchen	14'5" x 12'3"	175 sq. ft	Yes
12	Bath	4'9" x 8'7"	41 sq. ft	Yes
13	Bath	8'0" x 8'7"	59 sq. ft	Yes
14	Living Room	14'1" x 13'1"	191 sq. ft	Yes
15	Bedroom	10'11" x 10'6"	115 sq. ft	Yes
16	Primary Bedroom	10'11" x 12'2"	133 sq. ft	Yes
17	Porch	5'4" x 4'4"	23 sq. ft	No

4070 Pitzer Road, Roanoke, Roanoke County, Virginia, United States, 24014

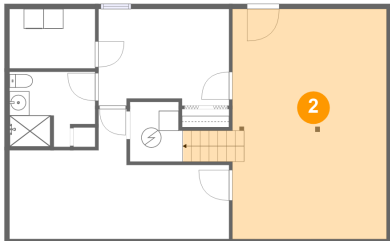
1 Floor 1 - Bedroom



Max Dimensions: 13'1" x 9'8"  
Calculated Area: 123 sq. ft  
Included: Yes

Heated: Yes  
Finished: Yes  
Enclosed: Yes  
Contiguous: Yes  
Permitted: Yes  
Wet space: No  
Addition: No  
Conversion: No

2 Floor 1 - Recreation Room

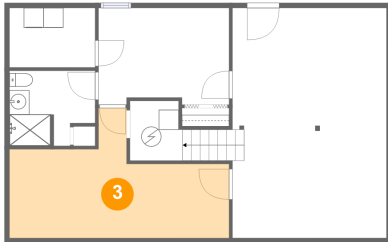


Max Dimensions: 15'6" x 23'1"  
Calculated Area: 373 sq. ft  
Included: Yes

Heated: Yes  
Finished: Yes  
Enclosed: Yes  
Contiguous: Yes  
Permitted: Yes  
Wet space: No  
Addition: No  
Conversion: No

4070 Pitzer Road, Roanoke, Roanoke County, Virginia, United States, 24014

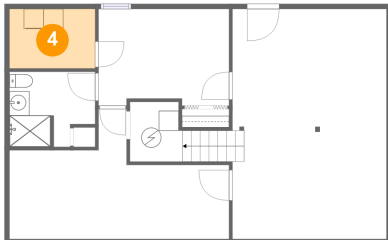
### 3 Floor 1 - Storage



Max Dimensions: 22'0" x 13'1"  
Calculated Area: 193 sq. ft  
Included: No

Heated: No  
Finished: No  
Enclosed: No  
Contiguous: Yes  
Permitted: Yes  
Wet space: No  
Addition: No  
Conversion: No

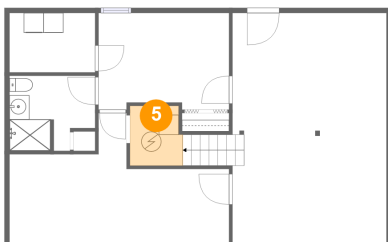
### 4 Floor 1 - Laundry



Max Dimensions: 8'7" x 6'0"  
Calculated Area: 51 sq. ft  
Included: Yes

Heated: Yes  
Finished: Yes  
Enclosed: Yes  
Contiguous: Yes  
Permitted: Yes  
Wet space: No  
Addition: No  
Conversion: No

### 5 Floor 1 - Utility

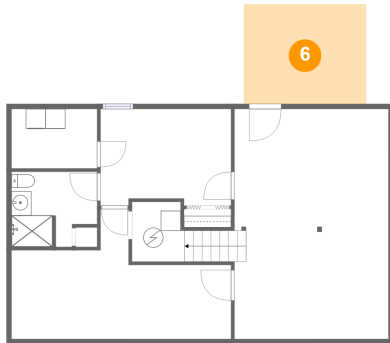


Max Dimensions: 5'4" x 6'0"  
Calculated Area: 31 sq. ft  
Included: No

Heated: Yes  
Finished: No  
Enclosed: Yes  
Contiguous: Yes  
Permitted: Yes  
Wet space: No  
Addition: No  
Conversion: No

4070 Pitzer Road, Roanoke, Roanoke County, Virginia, United States, 24014

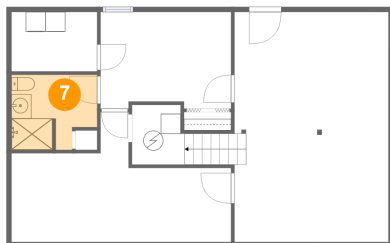
## 6 Floor 1 - Covered Patio



Max Dimensions: 12'3" x 10'0"  
Calculated Area: 123 sq. ft  
Included: No

Heated: No  
Finished: Yes  
Enclosed: No  
Contiguous: Yes  
Permitted: Yes  
Wet space: No  
Addition: No  
Conversion: No

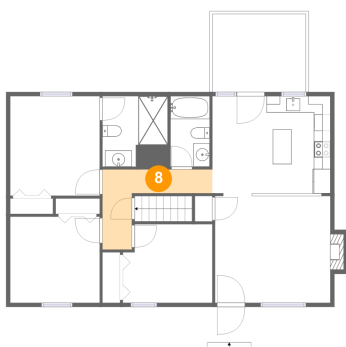
## 7 Floor 1 - Bath



Max Dimensions: 8'7" x 7'6"  
Calculated Area: 58 sq. ft  
Included: Yes

Heated: Yes  
Finished: Yes  
Enclosed: Yes  
Contiguous: Yes  
Permitted: Yes  
Wet space: Yes  
Addition: No  
Conversion: No

## 8 Floor 2 - Hall

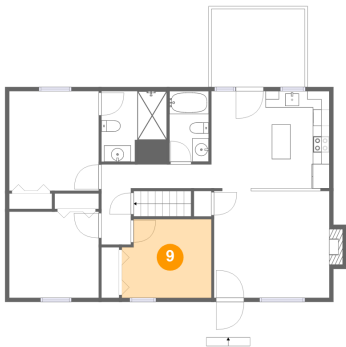


Max Dimensions: 13'5" x 9'10"  
Calculated Area: 64 sq. ft  
Included: Yes

Heated: Yes  
Finished: Yes  
Enclosed: Yes  
Contiguous: Yes  
Permitted: Yes  
Wet space: No  
Addition: No  
Conversion: No

4070 Pitzer Road, Roanoke, Roanoke County, Virginia, United States, 24014

9 Floor 2 - Bedroom



Max Dimensions: 10'11" x 9'7"  
Calculated Area: 100 sq. ft  
Included: Yes

Heated: Yes  
Finished: Yes  
Enclosed: Yes  
Contiguous: Yes  
Permitted: Yes  
Wet space: No  
Addition: No  
Conversion: No

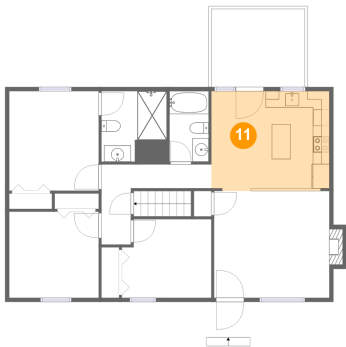
10 Floor 2 - Balcony



Max Dimensions: 11'5" x 9'6"  
Calculated Area: 109 sq. ft  
Included: No

Heated: No  
Finished: Yes  
Enclosed: No  
Contiguous: Yes  
Permitted: Yes  
Wet space: No  
Addition: No  
Conversion: No

11 Floor 2 - Eat-in Kitchen



Max Dimensions: 14'5" x 12'3"  
Calculated Area: 175 sq. ft  
Included: Yes

Heated: Yes  
Finished: Yes  
Enclosed: Yes  
Contiguous: Yes  
Permitted: Yes  
Wet space: No  
Addition: No  
Conversion: No

4070 Pitzer Road, Roanoke, Roanoke County, Virginia, United States, 24014

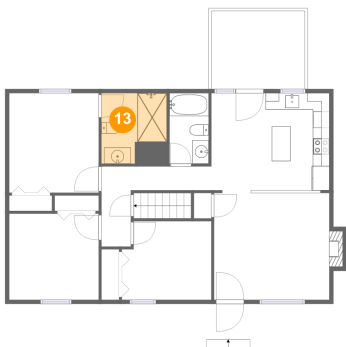
12 Floor 2 - Bath



Max Dimensions: 4'9" x 8'7"  
Calculated Area: 41 sq. ft  
Included: Yes

Heated: Yes  
Finished: Yes  
Enclosed: Yes  
Contiguous: Yes  
Permitted: Yes  
Wet space: Yes  
Addition: No  
Conversion: No

13 Floor 2 - Bath



Max Dimensions: 8'0" x 8'7"  
Calculated Area: 59 sq. ft  
Included: Yes

Heated: Yes  
Finished: Yes  
Enclosed: Yes  
Contiguous: Yes  
Permitted: Yes  
Wet space: Yes  
Addition: No  
Conversion: No

14 Floor 2 - Living Room



Max Dimensions: 14'1" x 13'1"  
Calculated Area: 191 sq. ft  
Included: Yes

Heated: Yes  
Finished: Yes  
Enclosed: Yes  
Contiguous: Yes  
Permitted: Yes  
Wet space: No  
Addition: No  
Conversion: No



4070 Pitzer Road, Roanoke, Roanoke County, Virginia, United States, 24014

## 15 Floor 2 - Bedroom



Max Dimensions: 10'11" x 10'6"  
Calculated Area: 115 sq. ft  
Included: Yes

Heated: Yes  
Finished: Yes  
Enclosed: Yes  
Contiguous: Yes  
Permitted: Yes  
Wet space: No  
Addition: No  
Conversion: No

## 16 Floor 2 - Primary Bedroom



Max Dimensions: 10'11" x 12'2"  
Calculated Area: 133 sq. ft  
Included: Yes

Heated: Yes  
Finished: Yes  
Enclosed: Yes  
Contiguous: Yes  
Permitted: Yes  
Wet space: No  
Addition: No  
Conversion: No

## 17 Floor 2 - Porch



Max Dimensions: 5'4" x 4'4"  
Calculated Area: 23 sq. ft  
Included: No

Heated: No  
Finished: Yes  
Enclosed: No  
Contiguous: Yes  
Permitted: Yes  
Wet space: No  
Addition: No  
Conversion: No