

Home data report

2715 Rockford Dr,#103,Fort Collins,CO,US, #103



**Total Area: 1255 sq. ft**

Basement: 0 sq. ft, 1st Floor: 522 sq. ft, 2nd Floor: 733 sq. ft

Excluded: Basement 522 sq. ft, Garage 356 sq. ft, Walls: 126 sq. ft

## Property summary

 **3** Floors

 **2** Bedrooms

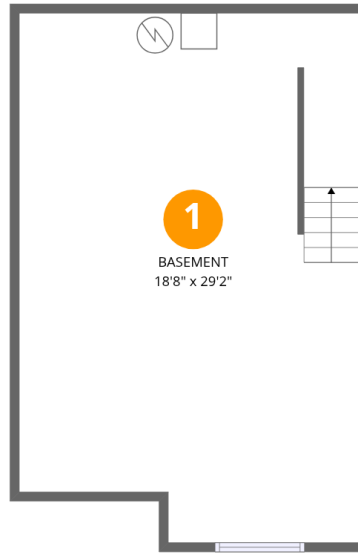
 **2** Bathrooms

Home data report

**2715 Rockford Dr,#103,Fort Collins,CO,US, #103**

 **1**  
Half baths

 **1**  
Garages



## Room dimensions

Floor 1 Below grade

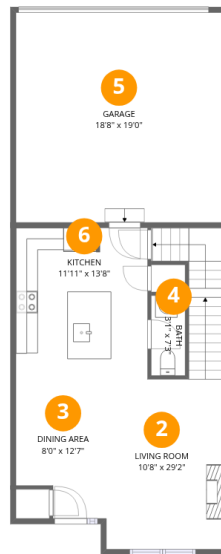
Total:0sqft

Excluded: 522sqft

#		Dimensions	sqft	Counted as living area
1	Basement	18'8" x 29'2"	522 sq. ft	No

Home data report

2715 Rockford Dr,#103,Fort Collins,CO,US, #103



## Room dimensions

Floor 2

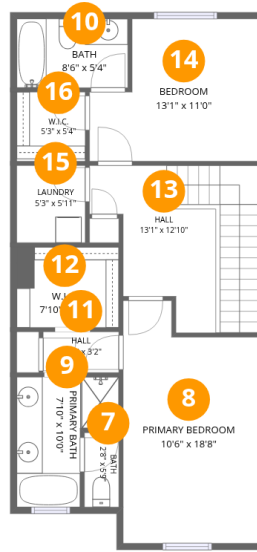
Total:522sqft

Excluded: 356sqft

#		Dimensions	sqft	Counted as living area
2	Living Room	10'8" x 29'2"	216 sq. ft	Yes
3	Dining Area	8'0" x 12'7"	91 sq. ft	Yes
4	Bath	3'1" x 7'3"	22 sq. ft	Yes
5	Garage	18'8" x 19'0"	356 sq. ft	No
6	Kitchen	11'11" x 13'8"	163 sq. ft	Yes

Home data report

2715 Rockford Dr,#103,Fort Collins,CO,US, #103



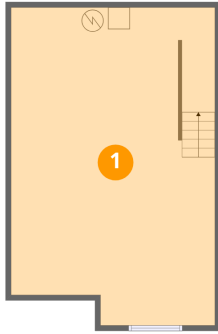
Room dimensions

Floor 3

Total:733sqft Excluded: 0sqft

#		Dimensions	sqft	Counted as living area
7	Bath	2'8" x 5'9"	15 sq. ft	Yes
8	Primary Bedroom	10'6" x 18'8"	177 sq. ft	Yes
9	Primary Bath	7'10" x 10'0"	61 sq. ft	Yes
10	Bath	8'6" x 5'4"	45 sq. ft	Yes
11	Hall	5'10" x 3'2"	18 sq. ft	Yes
12	W.I.C.	7'10" x 6'2"	49 sq. ft	Yes
13	Hall	13'1" x 12'10"	134 sq. ft	Yes
14	Bedroom	13'1" x 11'0"	125 sq. ft	Yes
15	Laundry	5'3" x 5'11"	31 sq. ft	Yes
16	W.I.C.	5'3" x 5'4"	28 sq. ft	Yes

## 1 Floor 1 - Basement



Dimensions: 18'8" x 29'2"  
Area: 522 sq. ft  
Counted as living area: No

Heated: Yes  
Finished: No  
Enclosed: Yes  
Contiguous: Yes  
Permitted: Yes  
Wet space: No  
Addition: No  
Conversion: No

## 2 Floor 2 - Living Room



Dimensions: 10'8" x 29'2"  
Area: 216 sq. ft  
Counted as living area: Yes

Heated: Yes  
Finished: Yes  
Enclosed: Yes  
Contiguous: Yes  
Permitted: Yes  
Wet space: No  
Addition: No  
Conversion: No

### 3 Floor 2 - Dining Area



Dimensions: 8'0" x 12'7"  
Area: 91 sq. ft  
Counted as living area: Yes

Heated: Yes  
Finished: Yes  
Enclosed: Yes  
Contiguous: Yes  
Permitted: Yes  
Wet space: No  
Addition: No  
Conversion: No

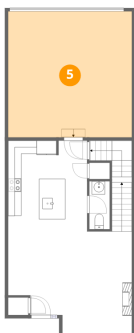
### 4 Floor 2 - Bath



Dimensions: 3'1" x 7'3"  
Area: 22 sq. ft  
Counted as living area: Yes

Heated: Yes  
Finished: Yes  
Enclosed: Yes  
Contiguous: Yes  
Permitted: Yes  
Wet space: Yes  
Addition: No  
Conversion: No

### 5 Floor 2 - Garage



Dimensions: 18'8" x 19'0"  
Area: 356 sq. ft  
Counted as living area: No

Heated: No  
Finished: No  
Enclosed: Yes  
Contiguous: Yes  
Permitted: Yes  
Wet space: No  
Addition: No  
Conversion: No

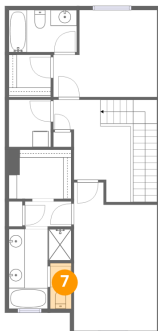
## 6 Floor 2 - Kitchen



Dimensions: 11'11" x 13'8"  
Area: 163 sq. ft  
Counted as living area: Yes

Heated: Yes  
Finished: Yes  
Enclosed: Yes  
Contiguous: Yes  
Permitted: Yes  
Wet space: No  
Addition: No  
Conversion: No

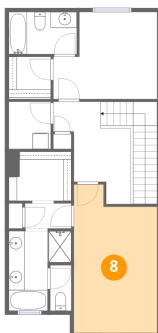
## 7 Floor 3 - Bath



Dimensions: 2'8" x 5'9"  
Area: 15 sq. ft  
Counted as living area: Yes

Heated: Yes  
Finished: Yes  
Enclosed: Yes  
Contiguous: Yes  
Permitted: Yes  
Wet space: Yes  
Addition: No  
Conversion: No

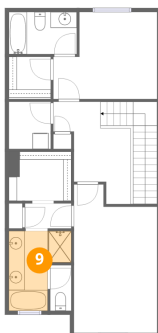
## 8 Floor 3 - Primary Bedroom



Dimensions: 10'6" x 18'8"  
Area: 177 sq. ft  
Counted as living area: Yes

Heated: Yes  
Finished: Yes  
Enclosed: Yes  
Contiguous: Yes  
Permitted: Yes  
Wet space: No  
Addition: No  
Conversion: No

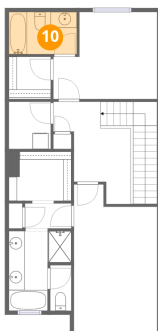
### 9 Floor 3 - Primary Bath



Dimensions: 7'10" x 10'0"  
Area: 61 sq. ft  
Counted as living area: Yes

Heated: Yes  
Finished: Yes  
Enclosed: Yes  
Contiguous: Yes  
Permitted: Yes  
Wet space: Yes  
Addition: No  
Conversion: No

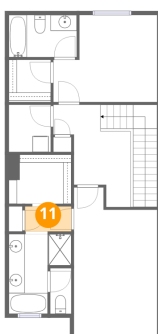
### 10 Floor 3 - Bath



Dimensions: 8'6" x 5'4"  
Area: 45 sq. ft  
Counted as living area: Yes

Heated: Yes  
Finished: Yes  
Enclosed: Yes  
Contiguous: Yes  
Permitted: Yes  
Wet space: Yes  
Addition: No  
Conversion: No

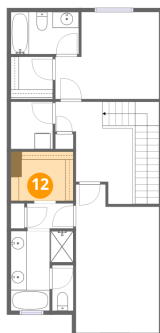
### 11 Floor 3 - Hall



Dimensions: 5'10" x 3'2"  
Area: 18 sq. ft  
Counted as living area: Yes

Heated: Yes  
Finished: Yes  
Enclosed: Yes  
Contiguous: Yes  
Permitted: Yes  
Wet space: No  
Addition: No  
Conversion: No

**12** Floor 3 - W.I.C.



Dimensions: 7'10" x 6'2"  
Area: 49 sq. ft  
Counted as living area: Yes

Heated: Yes  
Finished: Yes  
Enclosed: Yes  
Contiguous: Yes  
Permitted: Yes  
Wet space: No  
Addition: No  
Conversion: No

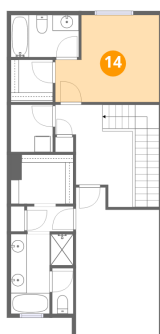
**13** Floor 3 - Hall



Dimensions: 13'1" x 12'10"  
Area: 134 sq. ft  
Counted as living area: Yes

Heated: Yes  
Finished: Yes  
Enclosed: Yes  
Contiguous: Yes  
Permitted: Yes  
Wet space: No  
Addition: No  
Conversion: No

**14** Floor 3 - Bedroom



Dimensions: 13'1" x 11'0"  
Area: 125 sq. ft  
Counted as living area: Yes

Heated: Yes  
Finished: Yes  
Enclosed: Yes  
Contiguous: Yes  
Permitted: Yes  
Wet space: No  
Addition: No  
Conversion: No

**15** Floor 3 - Laundry

---

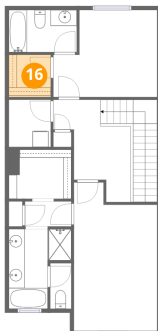


Dimensions: 5'3" x 5'11"  
Area: 31 sq. ft  
Counted as living area: Yes

Heated: Yes  
Finished: Yes  
Enclosed: Yes  
Contiguous: Yes  
Permitted: Yes  
Wet space: No  
Addition: No  
Conversion: No

**16** Floor 3 - W.I.C.

---



Dimensions: 5'3" x 5'4"  
Area: 28 sq. ft  
Counted as living area: Yes

Heated: Yes  
Finished: Yes  
Enclosed: Yes  
Contiguous: Yes  
Permitted: Yes  
Wet space: No  
Addition: No  
Conversion: No