

Home data report

3530 Josee Ln, Memphis, TN, US




Total Area: 2068 sq. ft

1st Floor: 2068 sq. ft

Excluded: Walls: 137 sq. ft

Property summary

 **1** Floors

 **4** Bedrooms

 **2** Bathrooms



Room dimensions

Floor 1

Total: 2068 sqft

Excluded: 0 sqft

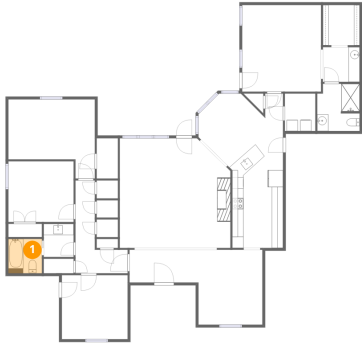
#		Dimensions	sqft	Counted as living area
1	Bath	6'0" x 6'1"	37 sq. ft	Yes
2	Bath	5'4" x 5'11"	31 sq. ft	Yes
3	W.I.C.	6'7" x 7'2"	47 sq. ft	Yes
4	Primary Bedroom	14'1" x 15'5"	217 sq. ft	Yes
5	Bath	6'7" x 6'2"	41 sq. ft	Yes
6	Bedroom	11'8" x 10'10"	126 sq. ft	Yes
7	Bath	7'7" x 8'5"	64 sq. ft	Yes
8	Laundry	5'5" x 6'8"	36 sq. ft	Yes
9	Foyer	12'3" x 5'10"	72 sq. ft	Yes
10	Bedroom	11'9" x 11'4"	133 sq. ft	Yes
11	Hall	9'4" x 16'7"	154 sq. ft	Yes

Home data report

3530 Josee Ln,Memphis,TN,US

#		Dimensions	sqft	Counted as living area
12	Bedroom	15'5" x 14'1"	217 sq. ft	Yes
13	Living Room	19'9" x 19'7"	386 sq. ft	Yes
14	Dining Area	11'5" x 13'4"	153 sq. ft	Yes
15	Breakfast Nook	15'1" x 13'8"	207 sq. ft	Yes
16	Kitchen	9'1" x 13'10"	125 sq. ft	Yes

1 Floor 1 - Bath



Dimensions: 6'0" x 6'1"
Area: 37 sq. ft
Counted as living area: Yes

Heated: Yes
Finished: Yes
Enclosed: Yes
Contiguous: Yes
Permitted: Yes
Wet space: Yes
Addition: No
Conversion: No

2 Floor 1 - Bath



Dimensions: 5'4" x 5'11"
Area: 31 sq. ft
Counted as living area: Yes

Heated: Yes
Finished: Yes
Enclosed: Yes
Contiguous: Yes
Permitted: Yes
Wet space: Yes
Addition: No
Conversion: No

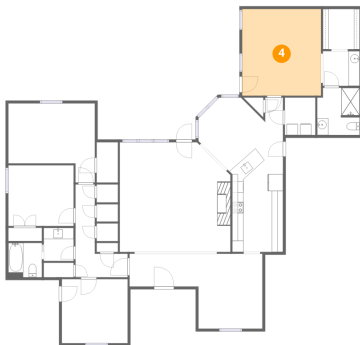
3 Floor 1 - W.I.C.



Dimensions: 6'7" x 7'2"
Area: 47 sq. ft
Counted as living area: Yes

Heated: Yes
Finished: Yes
Enclosed: Yes
Contiguous: Yes
Permitted: Yes
Wet space: No
Addition: No
Conversion: No

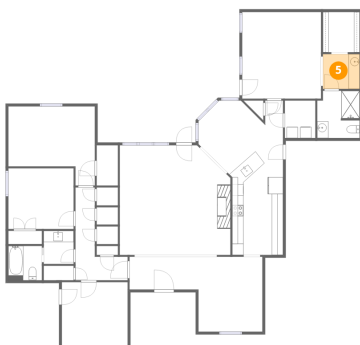
4 Floor 1 - Primary Bedroom



Dimensions: 14'1" x 15'5"
Area: 217 sq. ft
Counted as living area: Yes

Heated: Yes
Finished: Yes
Enclosed: Yes
Contiguous: Yes
Permitted: Yes
Wet space: No
Addition: No
Conversion: No

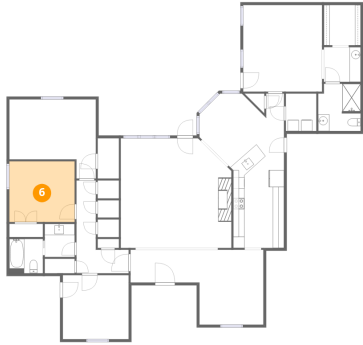
5 Floor 1 - Bath



Dimensions: 6'7" x 6'2"
Area: 41 sq. ft
Counted as living area: Yes

Heated: Yes
Finished: Yes
Enclosed: Yes
Contiguous: Yes
Permitted: Yes
Wet space: Yes
Addition: No
Conversion: No

6 Floor 1 - Bedroom



Dimensions: 11'8" x 10'10"
Area: 126 sq. ft
Counted as living area: Yes

Heated: Yes
Finished: Yes
Enclosed: Yes
Contiguous: Yes
Permitted: Yes
Wet space: No
Addition: No
Conversion: No

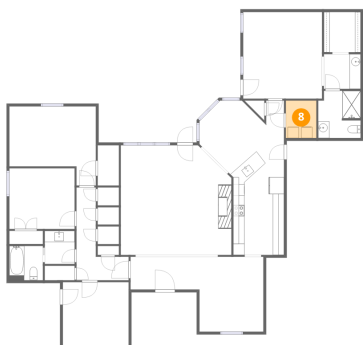
7 Floor 1 - Bath



Dimensions: 7'7" x 8'5"
Area: 64 sq. ft
Counted as living area: Yes

Heated: Yes
Finished: Yes
Enclosed: Yes
Contiguous: Yes
Permitted: Yes
Wet space: Yes
Addition: No
Conversion: No

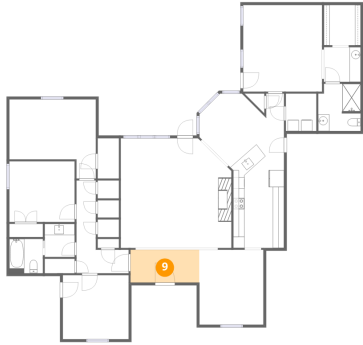
8 Floor 1 - Laundry



Dimensions: 5'5" x 6'8"
Area: 36 sq. ft
Counted as living area: Yes

Heated: Yes
Finished: Yes
Enclosed: Yes
Contiguous: Yes
Permitted: Yes
Wet space: No
Addition: No
Conversion: No

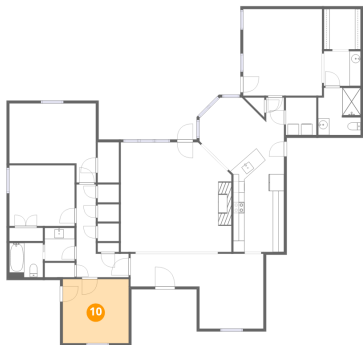
9 Floor 1 - Foyer



Dimensions: 12'3" x 5'10"
Area: 72 sq. ft
Counted as living area: Yes

Heated: Yes
Finished: Yes
Enclosed: Yes
Contiguous: Yes
Permitted: Yes
Wet space: No
Addition: No
Conversion: No

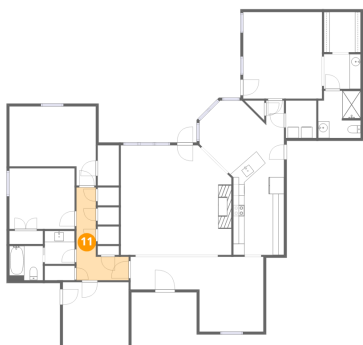
10 Floor 1 - Bedroom



Dimensions: 11'9" x 11'4"
Area: 133 sq. ft
Counted as living area: Yes

Heated: Yes
Finished: Yes
Enclosed: Yes
Contiguous: Yes
Permitted: Yes
Wet space: No
Addition: No
Conversion: No

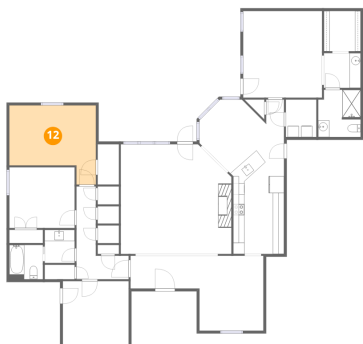
11 Floor 1 - Hall



Dimensions: 9'4" x 16'7"
Area: 154 sq. ft
Counted as living area: Yes

Heated: Yes
Finished: Yes
Enclosed: Yes
Contiguous: Yes
Permitted: Yes
Wet space: No
Addition: No
Conversion: No

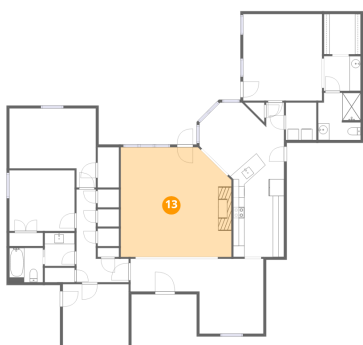
12 Floor 1 - Bedroom



Dimensions: 15'5" x 14'1"
Area: 217 sq. ft
Counted as living area: Yes

Heated: Yes
Finished: Yes
Enclosed: Yes
Contiguous: Yes
Permitted: Yes
Wet space: No
Addition: No
Conversion: No

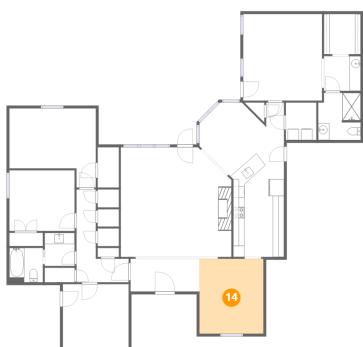
13 Floor 1 - Living Room



Dimensions: 19'9" x 19'7"
Area: 386 sq. ft
Counted as living area: Yes

Heated: Yes
Finished: Yes
Enclosed: Yes
Contiguous: Yes
Permitted: Yes
Wet space: No
Addition: No
Conversion: No

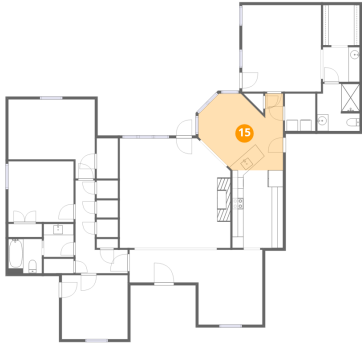
14 Floor 1 - Dining Area



Dimensions: 11'5" x 13'4"
Area: 153 sq. ft
Counted as living area: Yes

Heated: Yes
Finished: Yes
Enclosed: Yes
Contiguous: Yes
Permitted: Yes
Wet space: No
Addition: No
Conversion: No

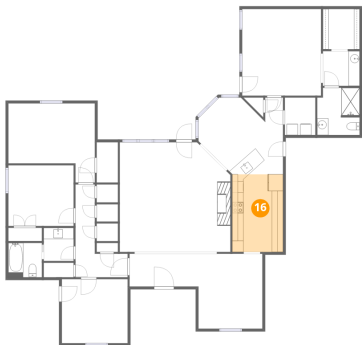
15 Floor 1 - Breakfast Nook



Dimensions: 15'1" x 13'8"
Area: 207 sq. ft
Counted as living area: Yes

Heated: Yes
Finished: Yes
Enclosed: Yes
Contiguous: Yes
Permitted: Yes
Wet space: No
Addition: No
Conversion: No

16 Floor 1 - Kitchen



Dimensions: 9'1" x 13'10"
Area: 125 sq. ft
Counted as living area: Yes

Heated: Yes
Finished: Yes
Enclosed: Yes
Contiguous: Yes
Permitted: Yes
Wet space: No
Addition: No
Conversion: No