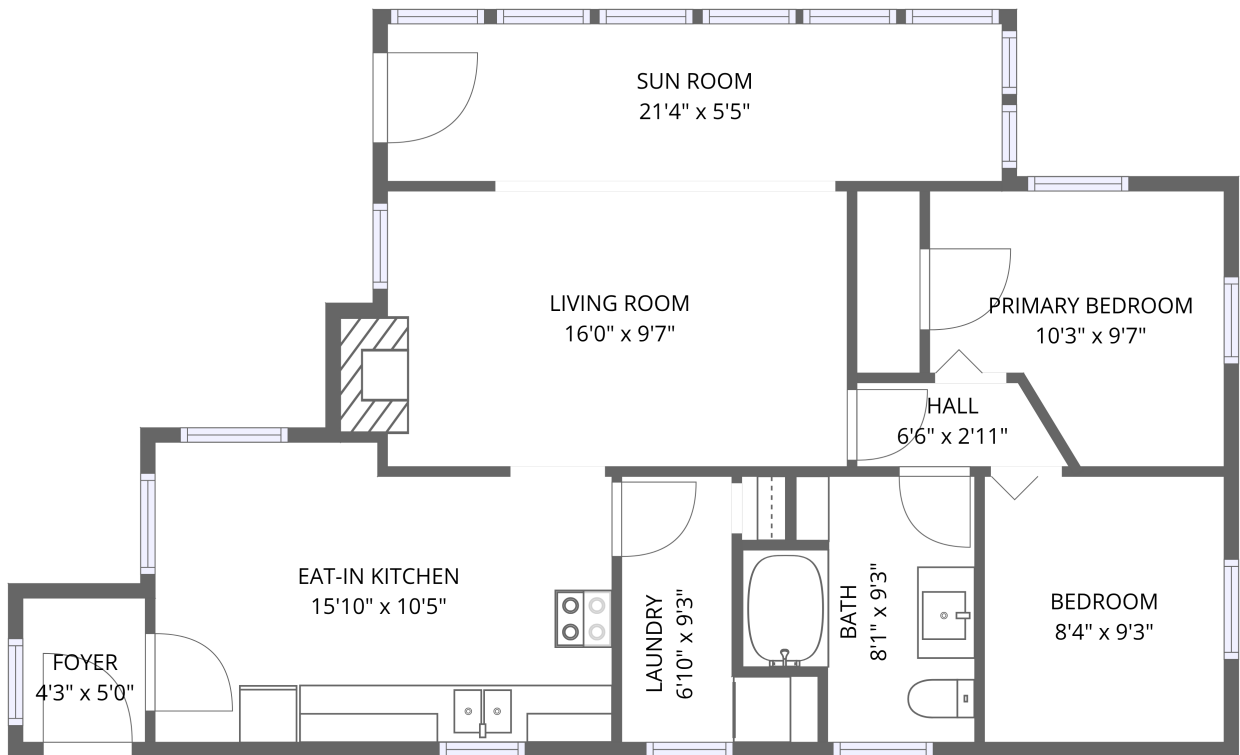


Home data report

19 Logan Road, Boothbay Harbor, Lincoln County, Maine, United States, 04575



1st floor


Total Area: 795 sq. ft

1st Floor: 795 sq. ft

Excluded: Walls: 67 sq. ft

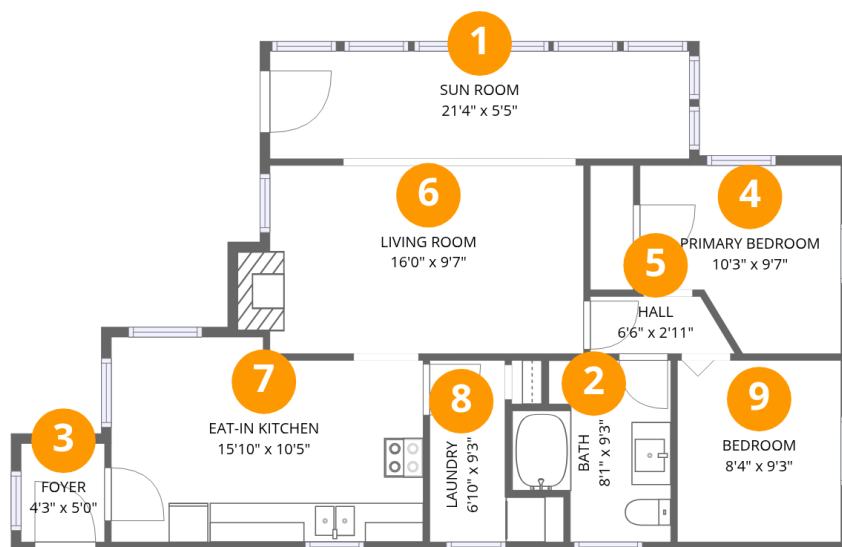
Property summary

 **1** Floors

 **2** Bedrooms

 **1** Bathrooms

19 Logan Road, Boothbay Harbor, Lincoln County, Maine, United States, 04575



Room dimensions

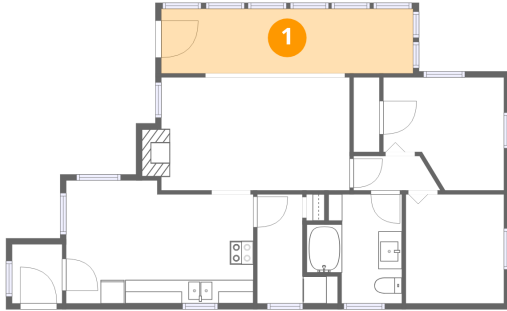
Floor 1

Total:795sqft Excluded: 0sqft

#		Dimensions	sqft	Counted as living area
1	Sun Room	21'4" x 5'5"	116 sq. ft	Yes
2	Bath	8'1" x 9'3"	75 sq. ft	Yes
3	Foyer	4'3" x 5'0"	21 sq. ft	Yes
4	Primary Bedroom	10'3" x 9'7"	98 sq. ft	Yes
5	Hall	6'6" x 2'11"	19 sq. ft	Yes
6	Living Room	16'0" x 9'7"	153 sq. ft	Yes
7	Eat-in Kitchen	15'10" x 10'5"	165 sq. ft	Yes
8	Laundry	6'10" x 9'3"	63 sq. ft	Yes
9	Bedroom	8'4" x 9'3"	77 sq. ft	Yes

19 Logan Road, Boothbay Harbor, Lincoln County, Maine, United States, 04575

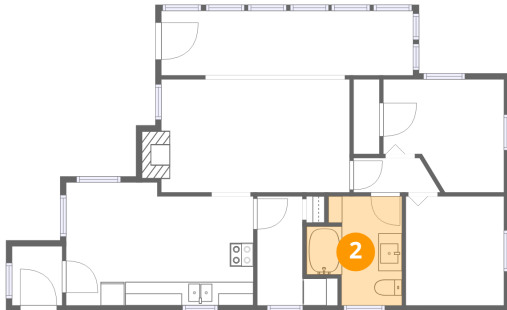
1 Floor 1 - Sun Room



Dimensions: 21'4" x 5'5"
Area: 116 sq. ft
Counted as living area: Yes

Heated: Yes
Finished: Yes
Enclosed: Yes
Contiguous: Yes
Permitted: Yes
Wet space: No
Addition: No
Conversion: No

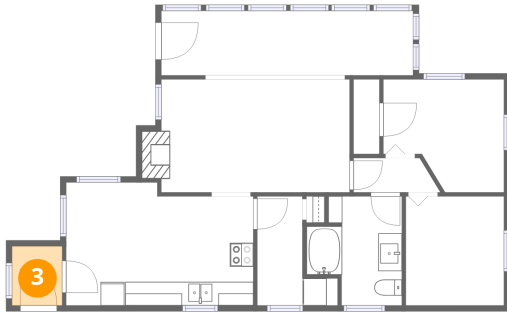
2 Floor 1 - Bath



Dimensions: 8'1" x 9'3"
Area: 75 sq. ft
Counted as living area: Yes

Heated: Yes
Finished: Yes
Enclosed: Yes
Contiguous: Yes
Permitted: Yes
Wet space: Yes
Addition: No
Conversion: No

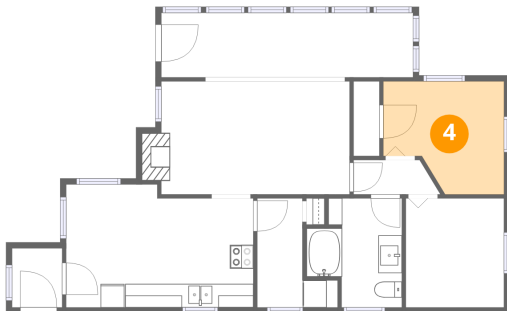
3 Floor 1 - Foyer



Dimensions: 4'3" x 5'0"
Area: 21 sq. ft
Counted as living area: Yes

Heated: Yes
Finished: Yes
Enclosed: Yes
Contiguous: Yes
Permitted: Yes
Wet space: No
Addition: No
Conversion: No

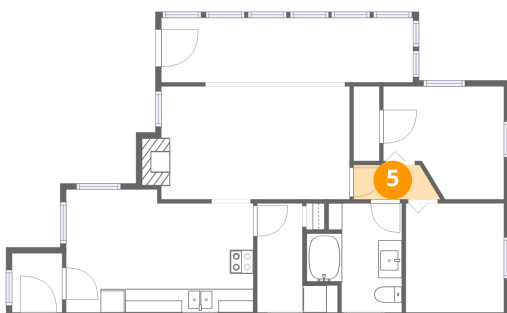
4 Floor 1 - Primary Bedroom



Dimensions: 10'3" x 9'7"
Area: 98 sq. ft
Counted as living area: Yes

Heated: Yes
Finished: Yes
Enclosed: Yes
Contiguous: Yes
Permitted: Yes
Wet space: No
Addition: No
Conversion: No

5 Floor 1 - Hall



Dimensions: 6'6" x 2'11"
Area: 19 sq. ft
Counted as living area: Yes

Heated: Yes
Finished: Yes
Enclosed: Yes
Contiguous: Yes
Permitted: Yes
Wet space: No
Addition: No
Conversion: No

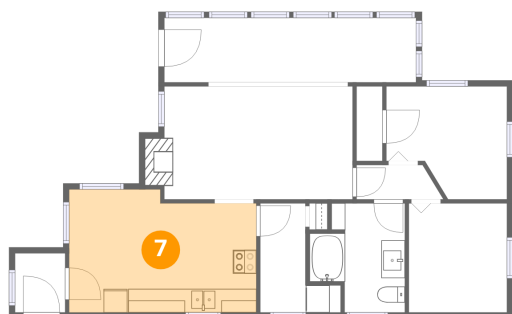
6 Floor 1 - Living Room



Dimensions: 16'0" x 9'7"
Area: 153 sq. ft
Counted as living area: Yes

Heated: Yes
Finished: Yes
Enclosed: Yes
Contiguous: Yes
Permitted: Yes
Wet space: No
Addition: No
Conversion: No

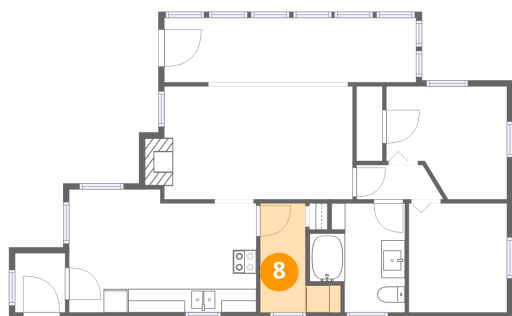
7 Floor 1 - Eat-in Kitchen



Dimensions: 15'10" x 10'5"
Area: 165 sq. ft
Counted as living area: Yes

Heated: Yes
Finished: Yes
Enclosed: Yes
Contiguous: Yes
Permitted: Yes
Wet space: No
Addition: No
Conversion: No

8 Floor 1 - Laundry



Dimensions: 6'10" x 9'3"
Area: 63 sq. ft
Counted as living area: Yes

Heated: Yes
Finished: Yes
Enclosed: Yes
Contiguous: Yes
Permitted: Yes
Wet space: No
Addition: No
Conversion: No

9 Floor 1 - Bedroom



Dimensions: 8'4" x 9'3"
Area: 77 sq. ft
Counted as living area: Yes

Heated: Yes
Finished: Yes
Enclosed: Yes
Contiguous: Yes
Permitted: Yes
Wet space: No
Addition: No
Conversion: No