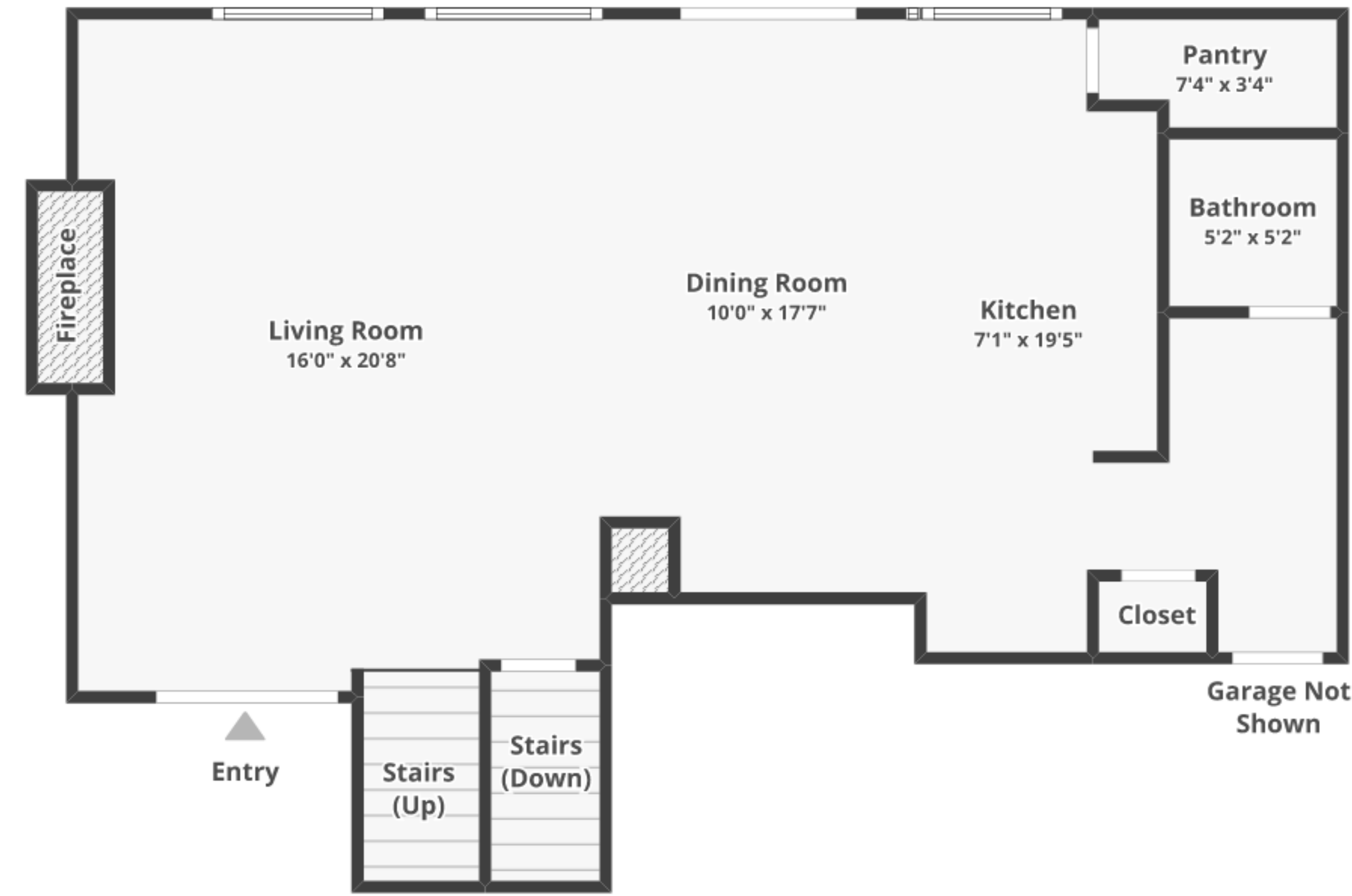


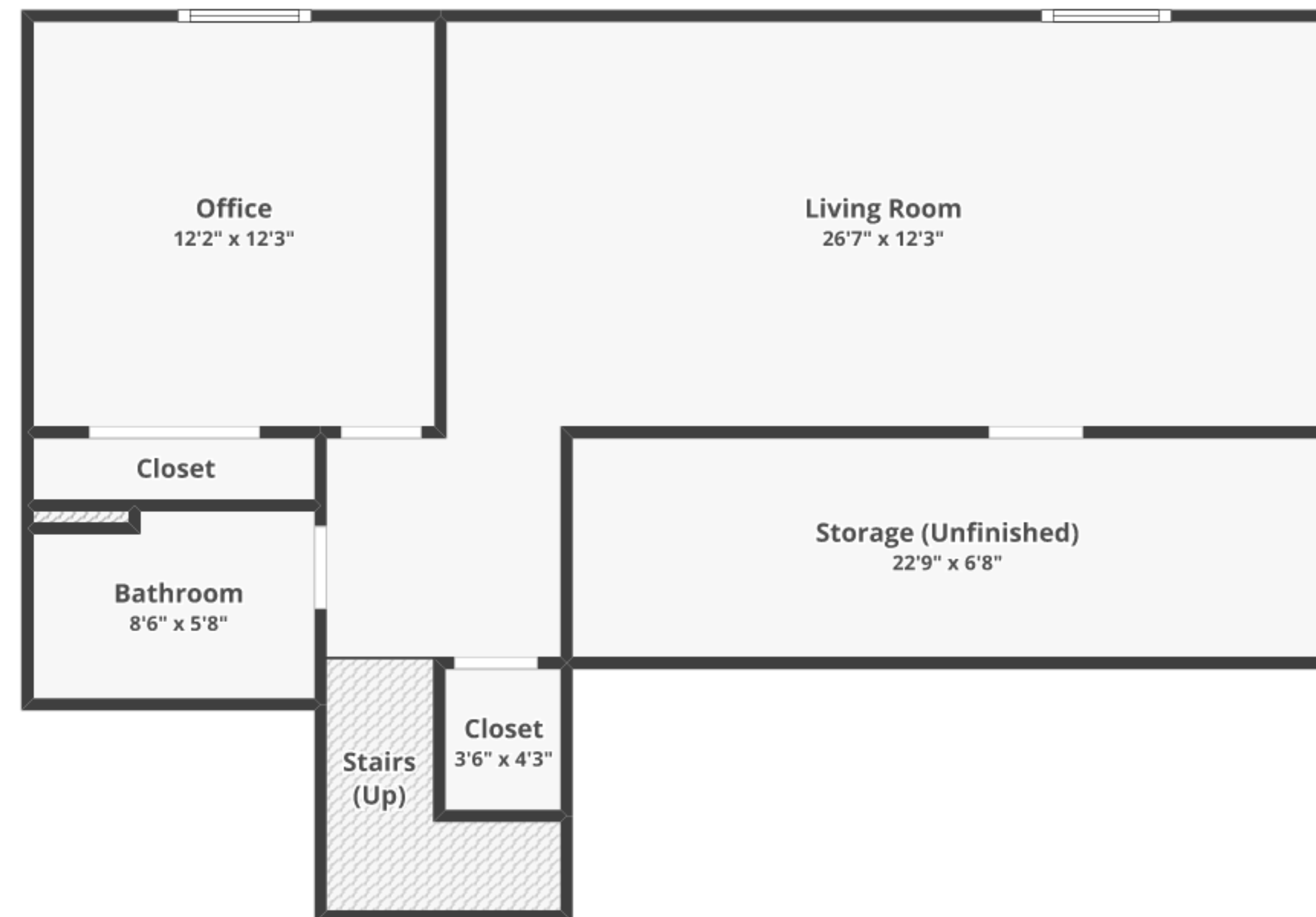
2965 Primrose Ln, Pella, IA 50219

Total finished area: ~2,134.94 sq. ft.

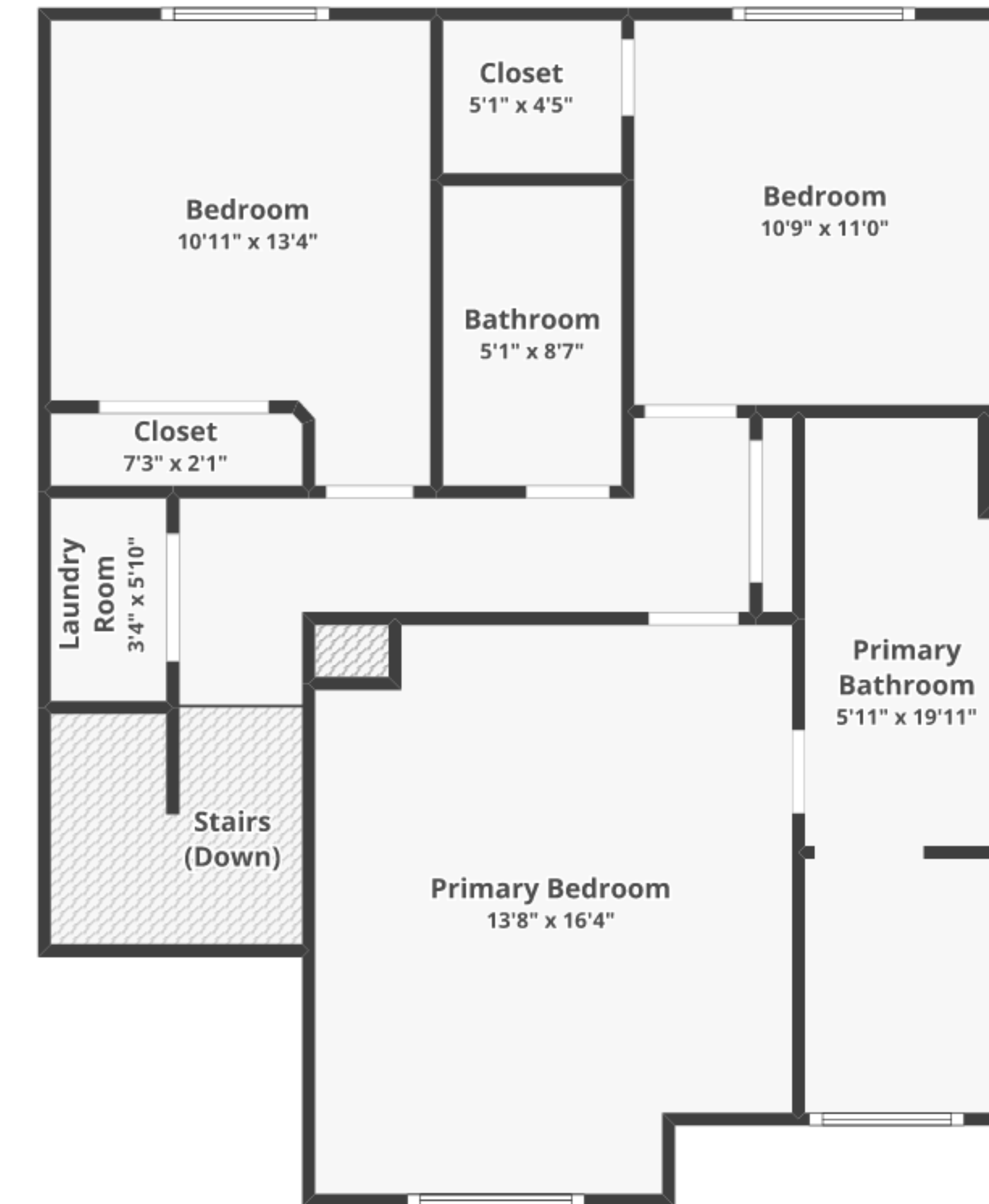
Total unfinished area: ~ 171.29 sq. ft.



FLOOR 1
Finished area: ~741.92 sq. ft.
Unfinished area: ~15.19 sq. ft.



BASEMENT
Finished area: ~600.06 sq. ft.
Unfinished area: ~151.61 sq. ft.



FLOOR 2
Finished area: ~792.96 sq. ft.
Unfinished area: ~4.49 sq. ft.