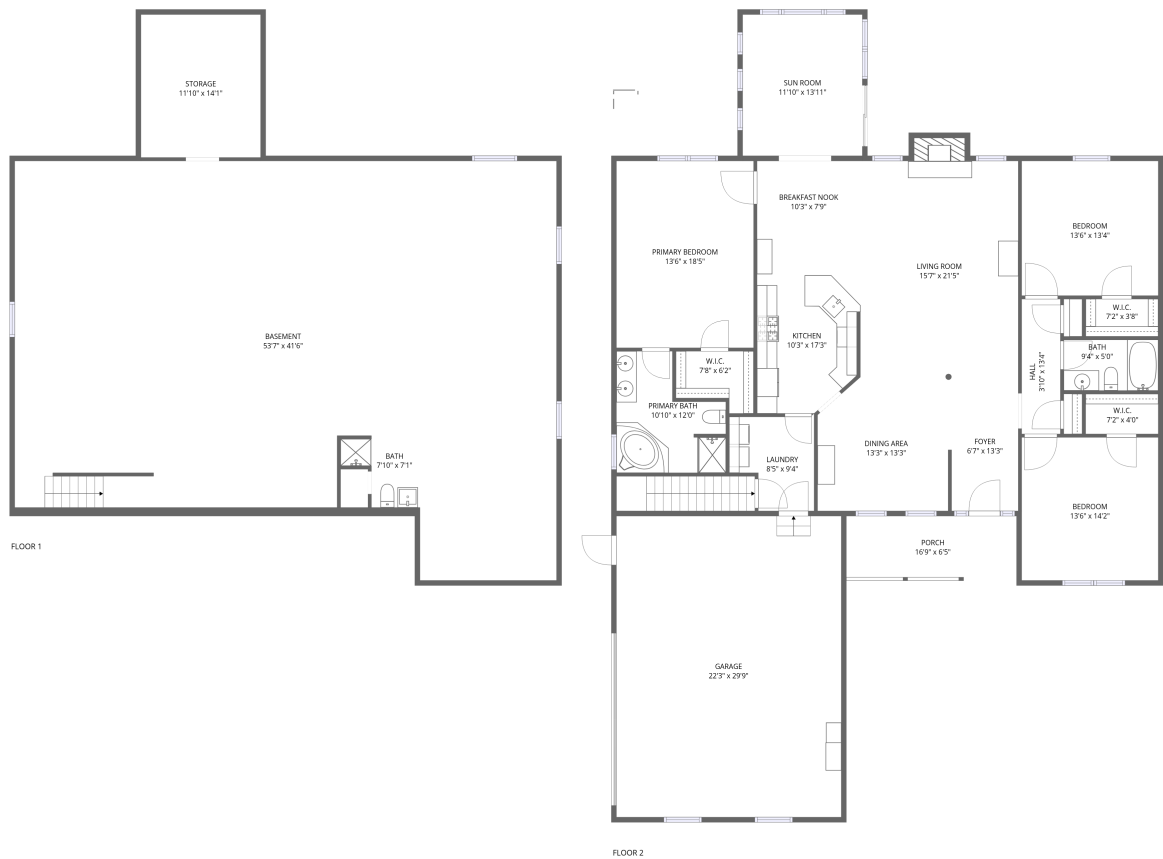


Home data report

2056 Pierce Bluffs Drive, Hermitage, Mercer County,
Pennsylvania, United States, 16148



Total Area: 2074 sq. ft
Below Ground: 0 sq. ft, Floor 2: 2074 sq. ft
Excluded: Storage 171 sq. ft, Basement 1879 sq. ft, Bath 55 sq. ft, Garage 662 sq. ft, Undefined 47 sq. ft, Porch 104 sq. ft, Fireplace 14 sq. ft, Walls: 274 sq. ft

Property summary

 **2** Floors

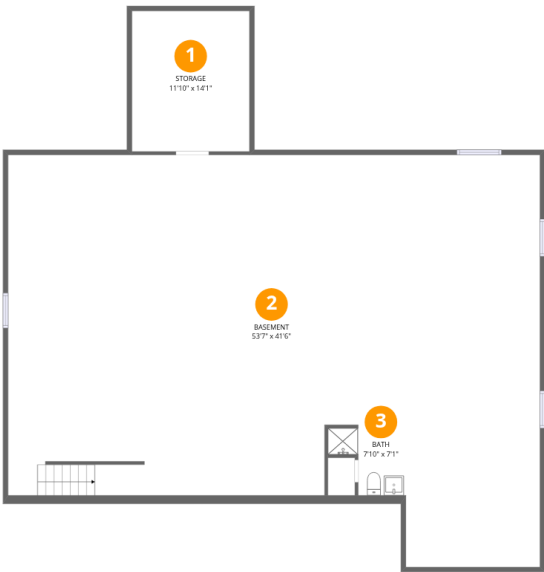
 **3** Bedrooms

 **3** Bathrooms

 **1** Garages

Home data report

2056 Pierce Bluffs Drive, Hermitage, Mercer County,
Pennsylvania, United States, 16148



Room dimensions

Floor 1 Below grade Total:0sqft Excluded: 2105sqft

#		Dimensions	sqft	Counted as living area
1	Storage	11'10" x 14'1"	167 sq. ft	No
2	Basement	53'7" x 41'6"	1876 sq. ft	No
3	Bath	7'10" x 7'1"	42 sq. ft	No

Home data report

2056 Pierce Bluffs Drive, Hermitage, Mercer County,
Pennsylvania, United States, 16148



Room dimensions

Floor 2 Total:2074sqft Excluded: 827sqft

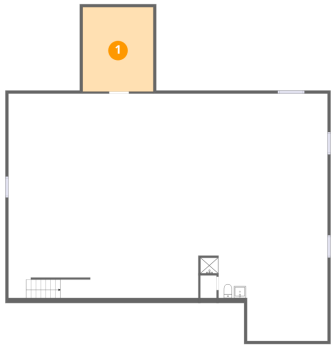
#		Dimensions	sqft	Counted as living area
4	W.I.C.	7'2" x 3'8"	27 sq. ft	Yes
5	Dining Area	13'3" x 13'3"	165 sq. ft	Yes
6	Breakfast Nook	10'3" x 7'9"	79 sq. ft	Yes
7	W.I.C.	7'8" x 6'2"	39 sq. ft	Yes
8	Living Room	15'7" x 21'5"	346 sq. ft	Yes
9	Hall	3'10" x 13'4"	51 sq. ft	Yes
10	Foyer	6'7" x 13'3"	87 sq. ft	Yes
11	Porch	16'9" x 6'5"	104 sq. ft	No
12	Bedroom	13'6" x 14'2"	191 sq. ft	Yes
13	Sun Room	11'10" x 13'11"	165 sq. ft	Yes
14	Kitchen	10'3" x 17'3"	165 sq. ft	Yes

Home data report

**2056 Pierce Bluffs Drive, Hermitage, Mercer County,
Pennsylvania, United States, 16148**

#		Dimensions	sqft	Counted as living area
15	Bath	9'4" x 5'0"	47 sq. ft	Yes
16	Primary Bath	10'10" x 12'0"	103 sq. ft	Yes
17	Garage	22'3" x 29'9"	662 sq. ft	No
18	W.I.C.	7'2" x 4'0"	28 sq. ft	Yes
19	Bedroom	13'6" x 13'4"	180 sq. ft	Yes
20	Primary Bedroom	13'6" x 18'5"	251 sq. ft	Yes
21	Laundry	8'5" x 9'4"	67 sq. ft	Yes

1 Floor 1 - Storage



Dimensions: 11'10" x 14'1"
Area: 167 sq. ft
Counted as living area: No

Heated: No
Finished: No
Enclosed: No
Contiguous: Yes
Permitted: Yes
Wet space: No
Addition: No
Conversion: No

2 Floor 1 - Basement



Dimensions: 53'7" x 41'6"
Area: 1876 sq. ft
Counted as living area: No

Heated: Yes
Finished: No
Enclosed: Yes
Contiguous: Yes
Permitted: Yes
Wet space: No
Addition: No
Conversion: No

3 Floor 1 - Bath



Dimensions: 7'10" x 7'1"
Area: 42 sq. ft
Counted as living area: No

Heated: Yes
Finished: No
Enclosed: Yes
Contiguous: Yes
Permitted: Yes
Wet space: Yes
Addition: No
Conversion: No

4 Floor 2 - W.I.C.



Dimensions: 7'2" x 3'8"
Area: 27 sq. ft
Counted as living area: Yes

Heated: Yes
Finished: Yes
Enclosed: Yes
Contiguous: Yes
Permitted: Yes
Wet space: No
Addition: No
Conversion: No

5 Floor 2 - Dining Area



Dimensions: 13'3" x 13'3"
Area: 165 sq. ft
Counted as living area: Yes

Heated: Yes
Finished: Yes
Enclosed: Yes
Contiguous: Yes
Permitted: Yes
Wet space: No
Addition: No
Conversion: No

2056 Pierce Bluffs Drive, Hermitage, Mercer County,
Pennsylvania, United States, 16148

6 Floor 2 - Breakfast Nook



Dimensions: 10'3" x 7'9"
Area: 79 sq. ft
Counted as living area: Yes

Heated: Yes
Finished: Yes
Enclosed: Yes
Contiguous: Yes
Permitted: Yes
Wet space: No
Addition: No
Conversion: No

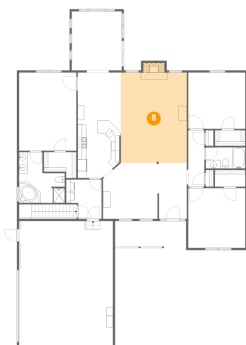
7 Floor 2 - W.I.C.



Dimensions: 7'8" x 6'2"
Area: 39 sq. ft
Counted as living area: Yes

Heated: Yes
Finished: Yes
Enclosed: Yes
Contiguous: Yes
Permitted: Yes
Wet space: No
Addition: No
Conversion: No

8 Floor 2 - Living Room



Dimensions: 15'7" x 21'5"
Area: 346 sq. ft
Counted as living area: Yes

Heated: Yes
Finished: Yes
Enclosed: Yes
Contiguous: Yes
Permitted: Yes
Wet space: No
Addition: No
Conversion: No

2056 Pierce Bluffs Drive, Hermitage, Mercer County,
Pennsylvania, United States, 16148

9 Floor 2 - Hall



Dimensions: 3'10" x 13'4"
Area: 51 sq. ft
Counted as living area: Yes

Heated: Yes
Finished: Yes
Enclosed: Yes
Contiguous: Yes
Permitted: Yes
Wet space: No
Addition: No
Conversion: No

10 Floor 2 - Foyer



Dimensions: 6'7" x 13'3"
Area: 87 sq. ft
Counted as living area: Yes

Heated: Yes
Finished: Yes
Enclosed: Yes
Contiguous: Yes
Permitted: Yes
Wet space: No
Addition: No
Conversion: No

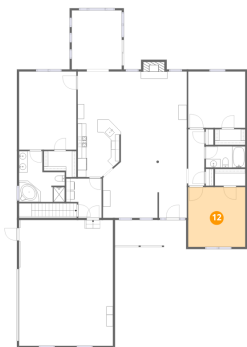
11 Floor 2 - Porch



Dimensions: 16'9" x 6'5"
Area: 104 sq. ft
Counted as living area: No

Heated: No
Finished: No
Enclosed: No
Contiguous: Yes
Permitted: Yes
Wet space: No
Addition: No
Conversion: No

12 Floor 2 - Bedroom



Dimensions: 13'6" x 14'2"
Area: 191 sq. ft
Counted as living area: Yes

Heated: Yes
Finished: Yes
Enclosed: Yes
Contiguous: Yes
Permitted: Yes
Wet space: No
Addition: No
Conversion: No

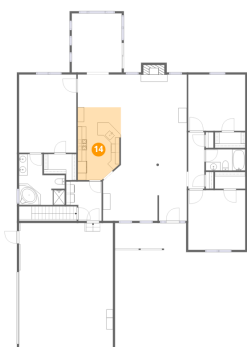
13 Floor 2 - Sun Room



Dimensions: 11'10" x 13'11"
Area: 165 sq. ft
Counted as living area: Yes

Heated: Yes
Finished: Yes
Enclosed: Yes
Contiguous: Yes
Permitted: Yes
Wet space: No
Addition: No
Conversion: No

14 Floor 2 - Kitchen



Dimensions: 10'3" x 17'3"
Area: 165 sq. ft
Counted as living area: Yes

Heated: Yes
Finished: Yes
Enclosed: Yes
Contiguous: Yes
Permitted: Yes
Wet space: No
Addition: No
Conversion: No

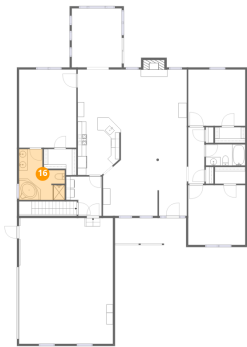
15 Floor 2 - Bath



Dimensions: 9'4" x 5'0"
Area: 47 sq. ft
Counted as living area: Yes

Heated: Yes
Finished: Yes
Enclosed: Yes
Contiguous: Yes
Permitted: Yes
Wet space: Yes
Addition: No
Conversion: No

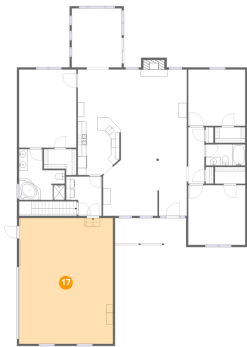
16 Floor 2 - Primary Bath



Dimensions: 10'10" x 12'0"
Area: 103 sq. ft
Counted as living area: Yes

Heated: Yes
Finished: Yes
Enclosed: Yes
Contiguous: Yes
Permitted: Yes
Wet space: Yes
Addition: No
Conversion: No

17 Floor 2 - Garage



Dimensions: 22'3" x 29'9"
Area: 662 sq. ft
Counted as living area: No

Heated: No
Finished: No
Enclosed: Yes
Contiguous: Yes
Permitted: Yes
Wet space: No
Addition: No
Conversion: No

18 Floor 2 - W.I.C.



Dimensions: 7'2" x 4'0"
Area: 28 sq. ft
Counted as living area: Yes

Heated: Yes
Finished: Yes
Enclosed: Yes
Contiguous: Yes
Permitted: Yes
Wet space: No
Addition: No
Conversion: No

19 Floor 2 - Bedroom



Dimensions: 13'6" x 13'4"
Area: 180 sq. ft
Counted as living area: Yes

Heated: Yes
Finished: Yes
Enclosed: Yes
Contiguous: Yes
Permitted: Yes
Wet space: No
Addition: No
Conversion: No

20 Floor 2 - Primary Bedroom



Dimensions: 13'6" x 18'5"
Area: 251 sq. ft
Counted as living area: Yes

Heated: Yes
Finished: Yes
Enclosed: Yes
Contiguous: Yes
Permitted: Yes
Wet space: No
Addition: No
Conversion: No

Home data report

2056 Pierce Bluffs Drive, Hermitage, Mercer County,
Pennsylvania, United States, 16148

21 Floor 2 - Laundry



Dimensions: 8'5" x 9'4"
Area: 67 sq. ft
Counted as living area: Yes

Heated: Yes
Finished: Yes
Enclosed: Yes
Contiguous: Yes
Permitted: Yes
Wet space: No
Addition: No
Conversion: No