

Home data report

2013 Bear Creek Drive, Barrister Estates, Salem, Roanoke County, Virginia, United States, 24153



Total Area: 2374 sq. ft

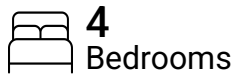
1st Floor: 1492 sq. ft, 2nd Floor: 882 sq. ft

Excluded: Garage 798 sq. ft, Porch 393 sq. ft, Deck 389 sq. ft, Covered patio 111 sq. ft, Fireplace 12 sq. ft, Open to below 306 sq. ft, Walls: 255 sq. ft

Property summary



2 Floors



4 Bedrooms



2 Bathrooms

Home data report

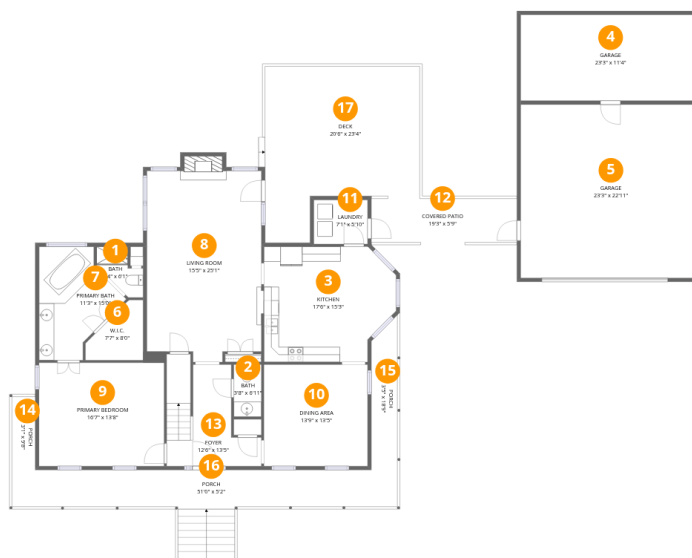
**2013 Bear Creek Drive, Barrister Estates, Salem, Roanoke
County, Virginia, United States, 24153**

 **1**
Half baths

 **2**
Garages

Home data report

2013 Bear Creek Drive, Barrister Estates, Salem, Roanoke County, Virginia, United States, 24153



Room dimensions

Floor 1

Total:1492sqft

Excluded: 1703sqft

#		Dimensions	sqft	Counted as living area
1	Bath	5'4" x 6'1"	27 sq. ft	Yes
2	Bath	3'8" x 6'11"	25 sq. ft	Yes
3	Kitchen	17'6" x 15'3"	242 sq. ft	Yes
4	Garage	23'3" x 11'4"	264 sq. ft	No
5	Garage	23'3" x 22'11"	534 sq. ft	No
6	W.I.C.	7'7" x 8'0"	44 sq. ft	Yes
7	Primary Bath	11'3" x 15'0"	123 sq. ft	Yes
8	Living Room	15'5" x 25'1"	378 sq. ft	Yes
9	Primary Bedroom	16'7" x 13'8"	226 sq. ft	Yes
10	Dining Area	13'9" x 13'5"	184 sq. ft	Yes
11	Laundry	7'1" x 5'10"	42 sq. ft	Yes

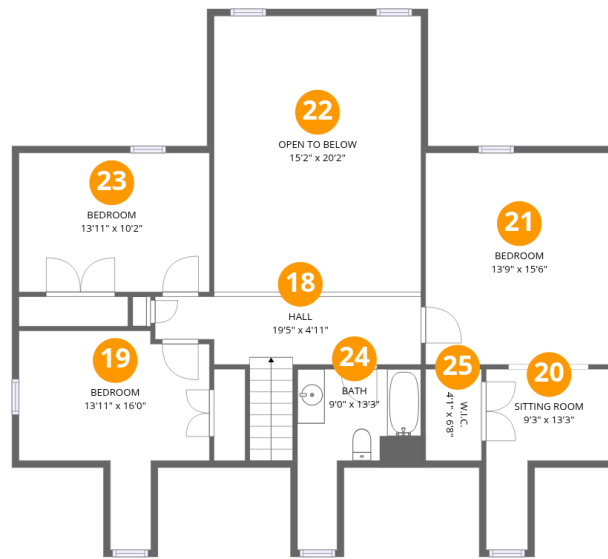
Home data report

2013 Bear Creek Drive, Barrister Estates, Salem, Roanoke County, Virginia, United States, 24153

#		Dimensions	sqft	Counted as living area
12	Covered Patio	19'3" x 5'9"	111 sq. ft	No
13	Foyer	12'6" x 13'5"	132 sq. ft	Yes
14	Porch	3'1" x 9'8"	30 sq. ft	No
15	Porch	3'5" x 18'9"	64 sq. ft	No
16	Porch	51'0" x 5'2"	299 sq. ft	No
17	Deck	20'6" x 23'4"	389 sq. ft	No

Home data report

2013 Bear Creek Drive, Barrister Estates, Salem, Roanoke County, Virginia, United States, 24153



Room dimensions

Floor 2

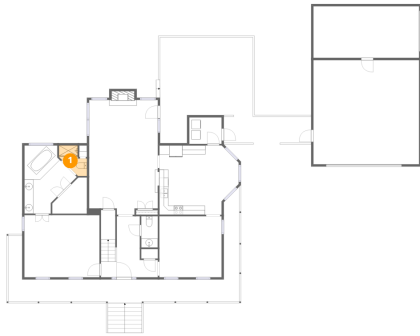
Total:882sqft

Excluded: 306sqft

#		Dimensions	sqft	Counted as living area
18	Hall	19'5" x 4'11"	116 sq. ft	Yes
19	Bedroom	13'11" x 16'0"	148 sq. ft	Yes
20	Sitting Room	9'3" x 13'3"	82 sq. ft	Yes
21	Bedroom	13'9" x 15'6"	212 sq. ft	Yes
22	Open To Below	15'2" x 20'2"	306 sq. ft	No
23	Bedroom	13'11" x 10'2"	142 sq. ft	Yes
24	Bath	9'0" x 13'3"	79 sq. ft	Yes
25	W.I.C.	4'1" x 6'8"	27 sq. ft	Yes

2013 Bear Creek Drive, Barrister Estates, Salem, Roanoke County, Virginia, United States, 24153

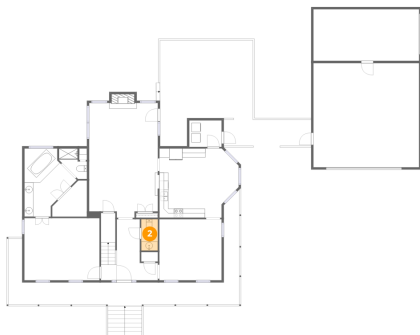
1 Floor 1 - Bath



Dimensions: 5'4" x 6'11"
Area: 27 sq. ft
Counted as living area: Yes

Heated: Yes
Finished: Yes
Enclosed: Yes
Contiguous: Yes
Permitted: Yes
Wet space: Yes
Addition: No
Conversion: No

2 Floor 1 - Bath

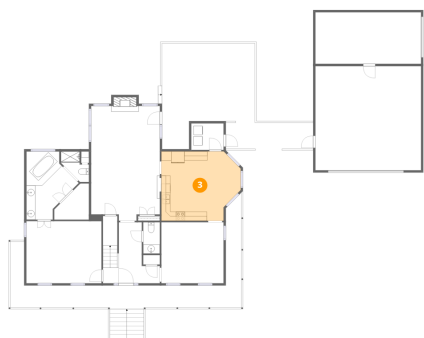


Dimensions: 3'8" x 6'11"
Area: 25 sq. ft
Counted as living area: Yes

Heated: Yes
Finished: Yes
Enclosed: Yes
Contiguous: Yes
Permitted: Yes
Wet space: Yes
Addition: No
Conversion: No

2013 Bear Creek Drive, Barrister Estates, Salem, Roanoke County, Virginia, United States, 24153

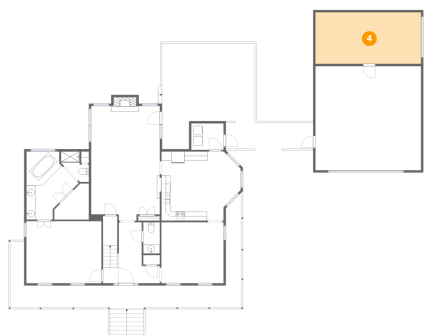
3 Floor 1 - Kitchen



Dimensions: 17'6" x 15'3"
Area: 242 sq. ft
Counted as living area: Yes

Heated: Yes
Finished: Yes
Enclosed: Yes
Contiguous: Yes
Permitted: Yes
Wet space: No
Addition: No
Conversion: No

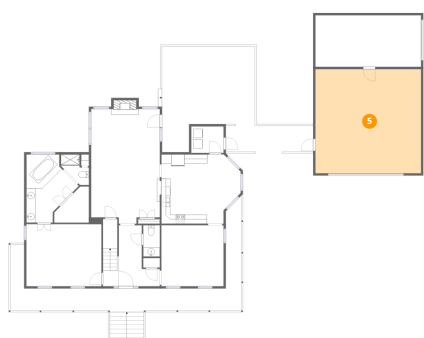
4 Floor 1 - Garage



Dimensions: 23'3" x 11'4"
Area: 264 sq. ft
Counted as living area: No

Heated: No
Finished: No
Enclosed: Yes
Contiguous: Yes
Permitted: Yes
Wet space: No
Addition: No
Conversion: No

5 Floor 1 - Garage

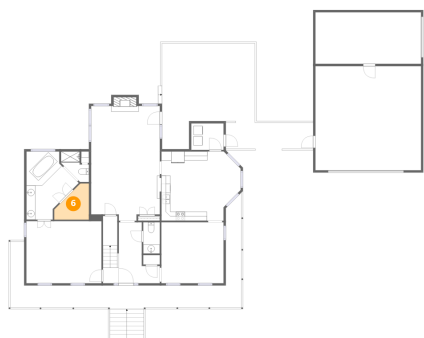


Dimensions: 23'3" x 22'11"
Area: 534 sq. ft
Counted as living area: No

Heated: No
Finished: No
Enclosed: Yes
Contiguous: Yes
Permitted: Yes
Wet space: No
Addition: No
Conversion: No

2013 Bear Creek Drive, Barrister Estates, Salem, Roanoke County, Virginia, United States, 24153

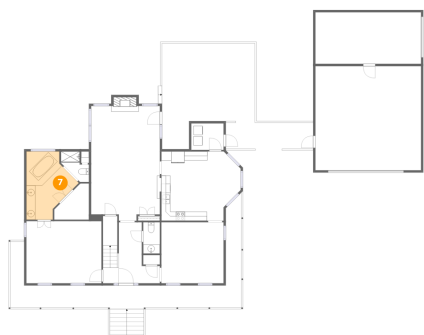
6 Floor 1 - W.I.C.



Dimensions: 7'7" x 8'0"
Area: 44 sq. ft
Counted as living area: Yes

Heated: Yes
Finished: Yes
Enclosed: Yes
Contiguous: Yes
Permitted: Yes
Wet space: No
Addition: No
Conversion: No

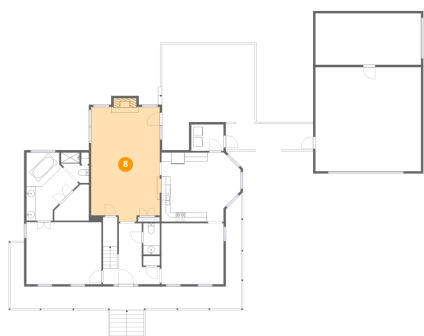
7 Floor 1 - Primary Bath



Dimensions: 11'3" x 15'0"
Area: 123 sq. ft
Counted as living area: Yes

Heated: Yes
Finished: Yes
Enclosed: Yes
Contiguous: Yes
Permitted: Yes
Wet space: Yes
Addition: No
Conversion: No

8 Floor 1 - Living Room

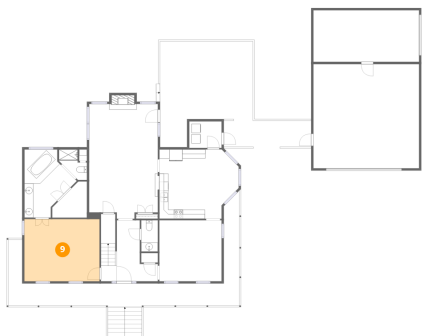


Dimensions: 15'5" x 25'1"
Area: 378 sq. ft
Counted as living area: Yes

Heated: Yes
Finished: Yes
Enclosed: Yes
Contiguous: Yes
Permitted: Yes
Wet space: No
Addition: No
Conversion: No

2013 Bear Creek Drive, Barrister Estates, Salem, Roanoke County, Virginia, United States, 24153

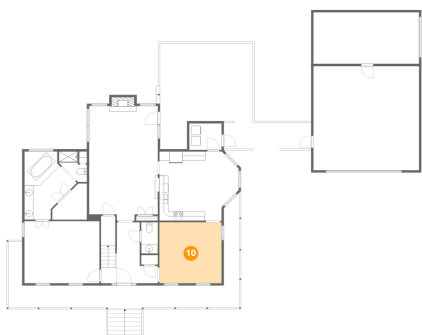
9 Floor 1 - Primary Bedroom



Dimensions: 16'7" x 13'8"
Area: 226 sq. ft
Counted as living area: Yes

Heated: Yes
Finished: Yes
Enclosed: Yes
Contiguous: Yes
Permitted: Yes
Wet space: No
Addition: No
Conversion: No

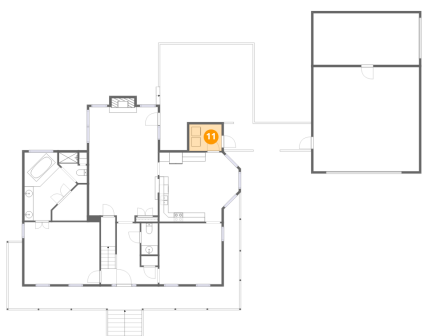
10 Floor 1 - Dining Area



Dimensions: 13'9" x 13'5"
Area: 184 sq. ft
Counted as living area: Yes

Heated: Yes
Finished: Yes
Enclosed: Yes
Contiguous: Yes
Permitted: Yes
Wet space: No
Addition: No
Conversion: No

11 Floor 1 - Laundry

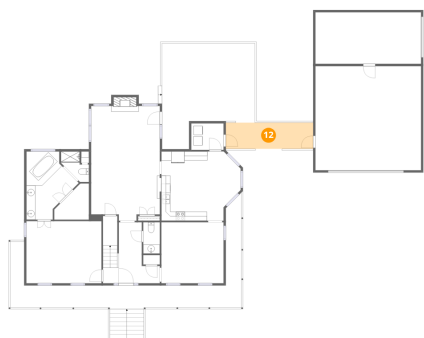


Dimensions: 7'1" x 5'10"
Area: 42 sq. ft
Counted as living area: Yes

Heated: Yes
Finished: Yes
Enclosed: Yes
Contiguous: Yes
Permitted: Yes
Wet space: No
Addition: No
Conversion: No

2013 Bear Creek Drive, Barrister Estates, Salem, Roanoke County, Virginia, United States, 24153

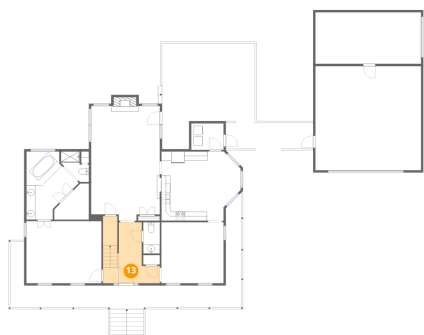
12 Floor 1 - Covered Patio



Dimensions: 19'3" x 5'9"
Area: 111 sq. ft
Counted as living area: No

Heated: No
Finished: No
Enclosed: No
Contiguous: Yes
Permitted: Yes
Wet space: No
Addition: No
Conversion: No

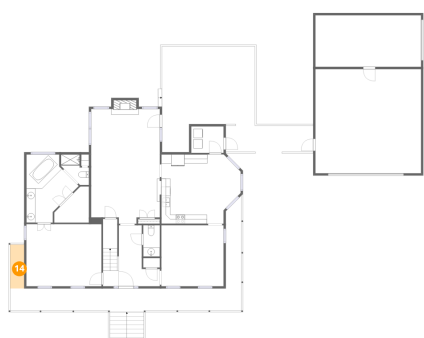
13 Floor 1 - Foyer



Dimensions: 12'6" x 13'5"
Area: 132 sq. ft
Counted as living area: Yes

Heated: Yes
Finished: Yes
Enclosed: Yes
Contiguous: Yes
Permitted: Yes
Wet space: No
Addition: No
Conversion: No

14 Floor 1 - Porch

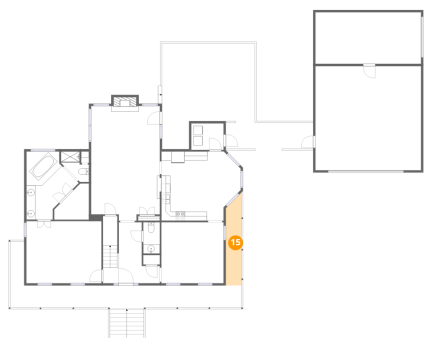


Dimensions: 3'1" x 9'8"
Area: 30 sq. ft
Counted as living area: No

Heated: No
Finished: No
Enclosed: No
Contiguous: Yes
Permitted: Yes
Wet space: No
Addition: No
Conversion: No

2013 Bear Creek Drive, Barrister Estates, Salem, Roanoke County, Virginia, United States, 24153

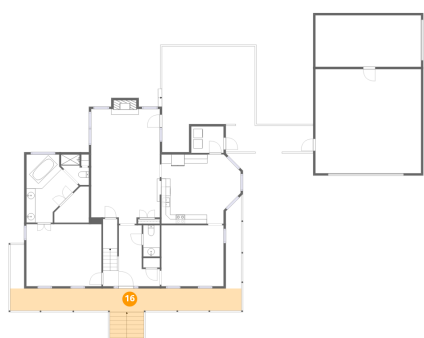
15 Floor 1 - Porch



Dimensions: 3'5" x 18'9"
Area: 64 sq. ft
Counted as living area: No

Heated: No
Finished: No
Enclosed: No
Contiguous: Yes
Permitted: Yes
Wet space: No
Addition: No
Conversion: No

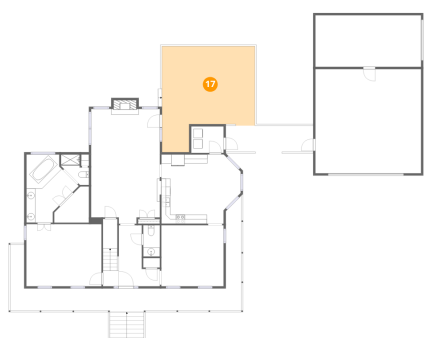
16 Floor 1 - Porch



Dimensions: 51'0" x 5'2"
Area: 299 sq. ft
Counted as living area: No

Heated: No
Finished: No
Enclosed: No
Contiguous: Yes
Permitted: Yes
Wet space: No
Addition: No
Conversion: No

17 Floor 1 - Deck

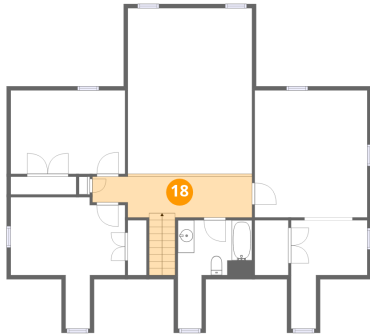


Dimensions: 20'6" x 23'4"
Area: 389 sq. ft
Counted as living area: No

Heated: No
Finished: No
Enclosed: No
Contiguous: Yes
Permitted: Yes
Wet space: No
Addition: No
Conversion: No

2013 Bear Creek Drive, Barrister Estates, Salem, Roanoke County, Virginia, United States, 24153

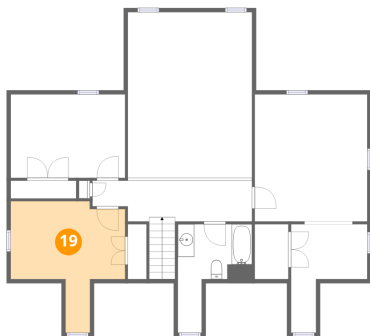
18 Floor 2 - Hall



Dimensions: 19'5" x 4'11"
Area: 116 sq. ft
Counted as living area: Yes

Heated: Yes
Finished: Yes
Enclosed: Yes
Contiguous: Yes
Permitted: Yes
Wet space: No
Addition: No
Conversion: No

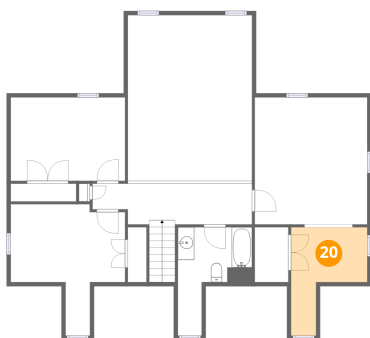
19 Floor 2 - Bedroom



Dimensions: 13'11" x 16'0"
Area: 148 sq. ft
Counted as living area: Yes

Heated: Yes
Finished: Yes
Enclosed: Yes
Contiguous: Yes
Permitted: Yes
Wet space: No
Addition: No
Conversion: No

20 Floor 2 - Sitting Room

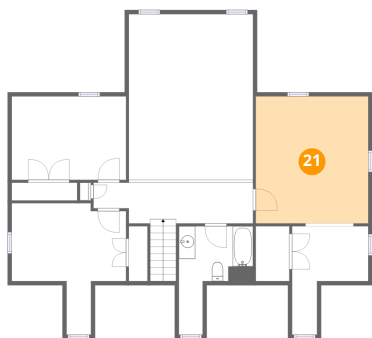


Dimensions: 9'3" x 13'3"
Area: 82 sq. ft
Counted as living area: Yes

Heated: Yes
Finished: Yes
Enclosed: Yes
Contiguous: Yes
Permitted: Yes
Wet space: No
Addition: No
Conversion: No

2013 Bear Creek Drive, Barrister Estates, Salem, Roanoke County, Virginia, United States, 24153

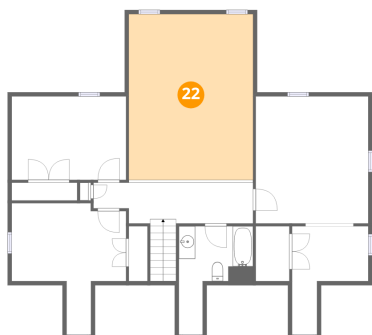
21 Floor 2 - Bedroom



Dimensions: 13'9" x 15'6"
Area: 212 sq. ft
Counted as living area: Yes

Heated: Yes
Finished: Yes
Enclosed: Yes
Contiguous: Yes
Permitted: Yes
Wet space: No
Addition: No
Conversion: No

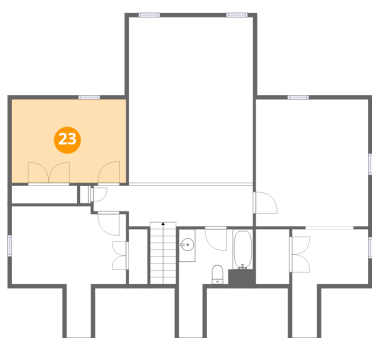
22 Floor 2 - Open To Below



Dimensions: 15'2" x 20'2"
Area: 306 sq. ft
Counted as living area: No

Heated: No
Finished: No
Enclosed: No
Contiguous: Yes
Permitted: No
Wet space: No
Addition: No
Conversion: No

23 Floor 2 - Bedroom

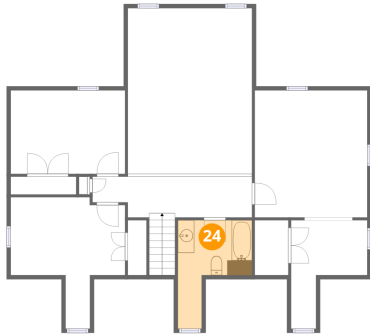


Dimensions: 13'11" x 10'2"
Area: 142 sq. ft
Counted as living area: Yes

Heated: Yes
Finished: Yes
Enclosed: Yes
Contiguous: Yes
Permitted: Yes
Wet space: No
Addition: No
Conversion: No

2013 Bear Creek Drive, Barrister Estates, Salem, Roanoke County, Virginia, United States, 24153

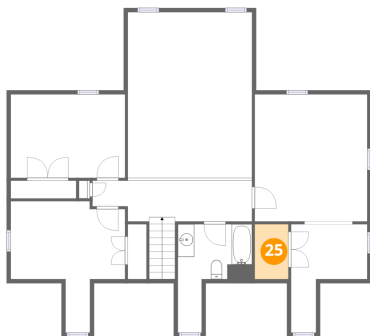
24 Floor 2 - Bath



Dimensions: 9'0" x 13'3"
Area: 79 sq. ft
Counted as living area: Yes

Heated: Yes
Finished: Yes
Enclosed: Yes
Contiguous: Yes
Permitted: Yes
Wet space: Yes
Addition: No
Conversion: No

25 Floor 2 - W.I.C.



Dimensions: 4'1" x 6'8"
Area: 27 sq. ft
Counted as living area: Yes

Heated: Yes
Finished: Yes
Enclosed: Yes
Contiguous: Yes
Permitted: Yes
Wet space: No
Addition: No
Conversion: No