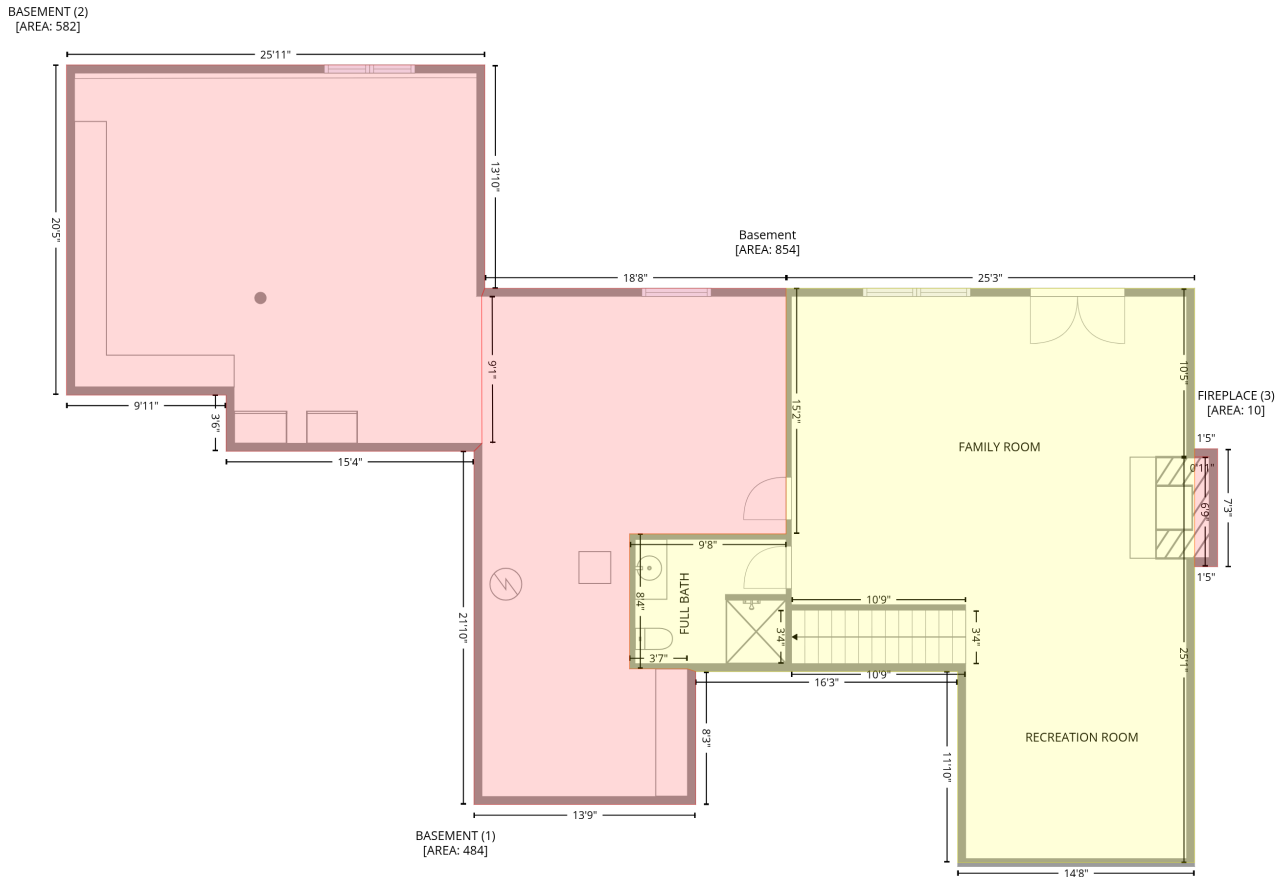


186 Katie Lane, Cashton, Monroe County, Wisconsin, United States, 54619

Gross Living Area: 2016 sq. ft

Level 1 - Below Grade



Space	Area (sq. ft)	Calculation
Basement (Living area)	854	$-(954.6 + 954.6) * (168 - 293.2) + (954.6 + 954.6) * (293.2 - 293.3) + (954.6 + 954.6) * (293.3 - 594.2) + (954.6 + 778.6) * (594.2 - 594.2) + (778.6 + 778.6) * (594.2 - 452.5) + (778.6 + 584.1) * (452.5 - 452.5) + (584.1 + 578.1) * (452.5 - 450.5) + (578.1 + 535.1) * (450.5 - 450.5) + (535.1 + 535.1) * (450.5 - 350.3) + (535.1 + 651.2) * (350.3 - 350.3) + (651.2 + 651.2) * (350.3 - 168) + (651.2 + 954.6) * (168 - 168)) * 0.5 * 0.00694$
BASEMENT (Non-living area)	484	$-(651.2 + 651.2) * (168 - 350.3) + (651.2 + 535.1) * (350.3 - 350.3) + (535.1 + 535.1) * (350.3 - 450.5) + (535.1 + 578.1) * (450.5 - 450.5) + (578.1 + 584.1) * (450.5 - 452.5) + (584.1 + 584.1) * (452.5 - 551.2) + (584.1 + 419.5) * (551.2 - 551.2) + (419.5 + 419.5) * (551.2 - 289) + (419.5 + 425.5) * (289 - 283) + (425.5 + 425.1) * (283 - 174) + (425.1 + 427.5) * (174 - 168) + (427.5 + 651.2) * (168 - 168)) * 0.5 * 0.00694$
BASEMENT (Non-living area)	582	$-(427.5 + 427.5) * (2.3 - 168) + (427.5 + 425.1) * (168 - 174) + (425.1 + 425.3) * (174 - 283.2) + (425.3 + 419.5) * (283.2 - 289) + (419.5 + 235.3) * (289 - 289) + (235.3 + 235.3) * (289 - 247.2) + (235.3 + 116.8) * (247.2 - 247.2) + (116.8 + 116.8) * (247.2 - 2.3) + (116.8 + 427.5) * (2.3 - 2.3)) * 0.5 * 0.00694$
FIREPLACE (Non-living area)	10	$-(971.7 + 971.7) * (287.2 - 374.6) + (971.7 + 954.6) * (374.6 - 374.6) + (954.6 + 954.6) * (374.6 - 293.3) + (954.6 + 965.7) * (293.3 - 293.2) + (965.7 + 954.6) * (293.2 - 293.2) + (954.6 + 954.6) * (293.2 - 287.2) + (954.6 + 971.7) * (287.2 - 287.2)) * 0.5 * 0.00694$

