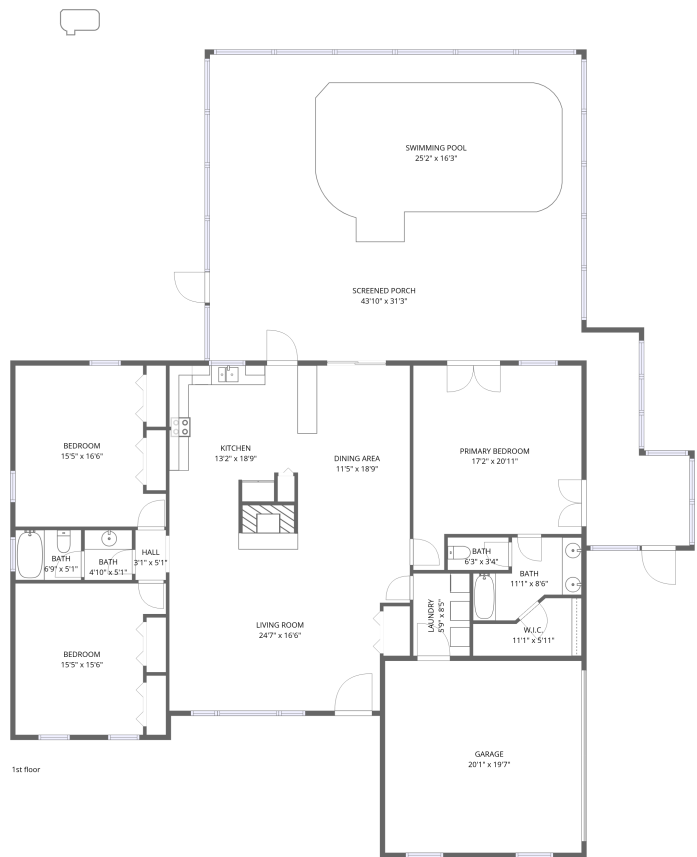


Home data report


750 Southwest 91st Place, Ocala, Marion County, Florida, United States, 34476




Total Area: 1960 sq. ft
1st Floor: 1960 sq. ft
Excluded: Garage 394 sq. ft, Screened porch 1014 sq. ft, Walls: 195 sq. ft

Property summary

 **1** Floors

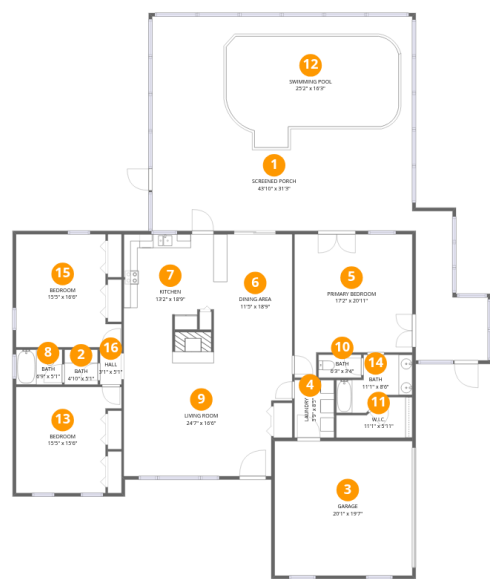
 **3** Bedrooms

 **2** Bathrooms

 **1** Garages

Home data report

750 Southwest 91st Place, Ocala, Marion County, Florida, United States, 34476



Room dimensions

Floor 1

Total:1960sqft

Excluded: 1408sqft

#		Dimensions	sqft	Counted as living area
1	Screened Porch	43'10" x 31'3"	1369 sq. ft	No
2	Bath	4'10" x 5'1"	25 sq. ft	Yes
3	Garage	20'1" x 19'7"	394 sq. ft	No
4	Laundry	5'9" x 8'5"	49 sq. ft	Yes
5	Primary Bedroom	17'2" x 20'11"	359 sq. ft	Yes
6	Dining Area	11'5" x 18'9"	215 sq. ft	Yes
7	Kitchen	13'2" x 18'9"	246 sq. ft	Yes
8	Bath	6'9" x 5'1"	34 sq. ft	Yes
9	Living Room	24'7" x 16'6"	405 sq. ft	Yes
10	Bath	6'3" x 3'4"	21 sq. ft	Yes
11	W.I.C.	11'1" x 5'11"	65 sq. ft	Yes

Home data report

750 Southwest 91st Place, Ocala, Marion County, Florida, United States, 34476

#		Dimensions	sqft	Counted as living area
12	Swimming Pool	25'2" x 16'3"	408 sq. ft	No
13	Bedroom	15'5" x 15'6"	238 sq. ft	Yes
14	Bath	11'1" x 8'6"	94 sq. ft	Yes
15	Bedroom	15'5" x 16'6"	253 sq. ft	Yes
16	Hall	3'1" x 5'1"	16 sq. ft	Yes

1 Floor 1 - Screened Porch



Dimensions: 43'10" x 31'3"
Area: 1369 sq. ft
Counted as living area: No

Heated: No
Finished: No
Enclosed: No
Contiguous: Yes
Permitted: Yes
Wet space: No
Addition: No
Conversion: No

2 Floor 1 - Bath

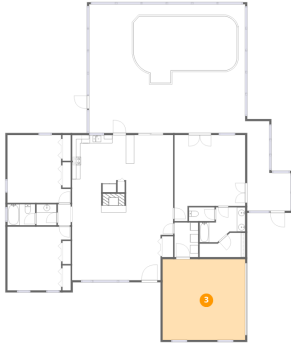


Dimensions: 4'10" x 5'1"
Area: 25 sq. ft
Counted as living area: Yes

Heated: Yes
Finished: Yes
Enclosed: Yes
Contiguous: Yes
Permitted: Yes
Wet space: Yes
Addition: No
Conversion: No

750 Southwest 91st Place, Ocala, Marion County, Florida, United States, 34476

3 Floor 1 - Garage



Dimensions: 20'1" x 19'7"
Area: 394 sq. ft
Counted as living area: No

Heated: No
Finished: No
Enclosed: Yes
Contiguous: Yes
Permitted: Yes
Wet space: No
Addition: No
Conversion: No

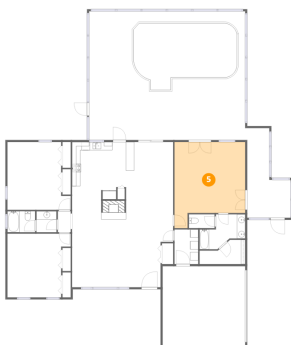
4 Floor 1 - Laundry



Dimensions: 5'9" x 8'5"
Area: 49 sq. ft
Counted as living area: Yes

Heated: Yes
Finished: Yes
Enclosed: Yes
Contiguous: Yes
Permitted: Yes
Wet space: No
Addition: No
Conversion: No

5 Floor 1 - Primary Bedroom

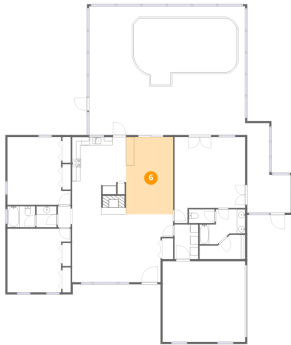


Dimensions: 17'2" x 20'11"
Area: 359 sq. ft
Counted as living area: Yes

Heated: Yes
Finished: Yes
Enclosed: Yes
Contiguous: Yes
Permitted: Yes
Wet space: No
Addition: No
Conversion: No

750 Southwest 91st Place, Ocala, Marion County, Florida, United States, 34476

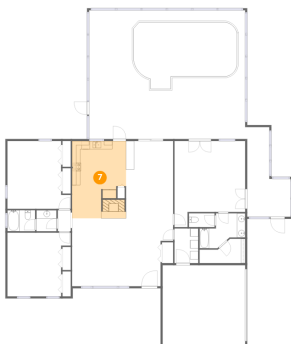
6 Floor 1 - Dining Area



Dimensions: 11'5" x 18'9"
Area: 215 sq. ft
Counted as living area: Yes

Heated: Yes
Finished: Yes
Enclosed: Yes
Contiguous: Yes
Permitted: Yes
Wet space: No
Addition: No
Conversion: No

7 Floor 1 - Kitchen



Dimensions: 13'2" x 18'9"
Area: 246 sq. ft
Counted as living area: Yes

Heated: Yes
Finished: Yes
Enclosed: Yes
Contiguous: Yes
Permitted: Yes
Wet space: No
Addition: No
Conversion: No

8 Floor 1 - Bath

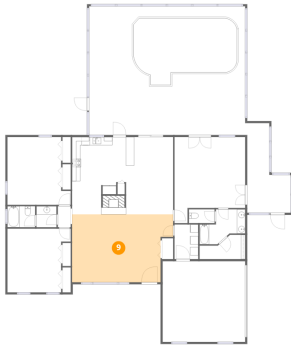


Dimensions: 6'9" x 5'1"
Area: 34 sq. ft
Counted as living area: Yes

Heated: Yes
Finished: Yes
Enclosed: Yes
Contiguous: Yes
Permitted: Yes
Wet space: Yes
Addition: No
Conversion: No

750 Southwest 91st Place, Ocala, Marion County, Florida, United States, 34476

9 Floor 1 - Living Room



Dimensions: 24'7" x 16'6"
Area: 405 sq. ft
Counted as living area: Yes

Heated: Yes
Finished: Yes
Enclosed: Yes
Contiguous: Yes
Permitted: Yes
Wet space: No
Addition: No
Conversion: No

10 Floor 1 - Bath



Dimensions: 6'3" x 3'4"
Area: 21 sq. ft
Counted as living area: Yes

Heated: Yes
Finished: Yes
Enclosed: Yes
Contiguous: Yes
Permitted: Yes
Wet space: Yes
Addition: No
Conversion: No

11 Floor 1 - W.I.C.



Dimensions: 11'1" x 5'11"
Area: 65 sq. ft
Counted as living area: Yes

Heated: Yes
Finished: Yes
Enclosed: Yes
Contiguous: Yes
Permitted: Yes
Wet space: No
Addition: No
Conversion: No

750 Southwest 91st Place, Ocala, Marion County, Florida, United States, 34476

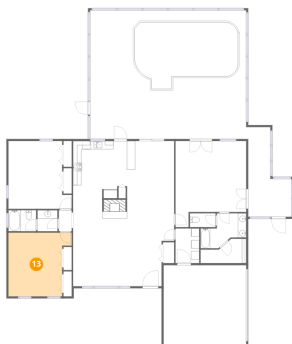
12 Floor 1 - Swimming Pool



Dimensions: 25'2" x 16'3"
Area: 408 sq. ft
Counted as living area: No

Heated: No
Finished: No
Enclosed: No
Contiguous: Yes
Permitted: No
Wet space: No
Addition: No
Conversion: No

13 Floor 1 - Bedroom



Dimensions: 15'5" x 15'6"
Area: 238 sq. ft
Counted as living area: Yes

Heated: Yes
Finished: Yes
Enclosed: Yes
Contiguous: Yes
Permitted: Yes
Wet space: No
Addition: No
Conversion: No

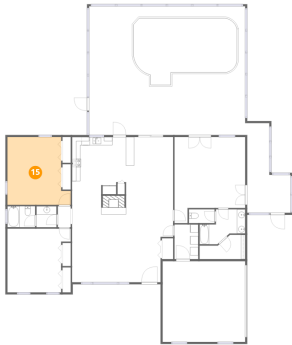
14 Floor 1 - Bath



Dimensions: 11'1" x 8'6"
Area: 94 sq. ft
Counted as living area: Yes

Heated: Yes
Finished: Yes
Enclosed: Yes
Contiguous: Yes
Permitted: Yes
Wet space: Yes
Addition: No
Conversion: No

15 Floor 1 - Bedroom



Dimensions: 15'5" x 16'6"
Area: 253 sq. ft
Counted as living area: Yes

Heated: Yes
Finished: Yes
Enclosed: Yes
Contiguous: Yes
Permitted: Yes
Wet space: No
Addition: No
Conversion: No

16 Floor 1 - Hall



Dimensions: 3'1" x 5'1"
Area: 16 sq. ft
Counted as living area: Yes

Heated: Yes
Finished: Yes
Enclosed: Yes
Contiguous: Yes
Permitted: Yes
Wet space: No
Addition: No
Conversion: No