

Home data report

19805 East 58th Place, Aurora, Adams County, Colorado, United States, 80019



Total Area: 2206 sq. ft

Basement: 0 sq. ft, 1st Floor: 1220 sq. ft, 2nd Floor: 986 sq. ft

Excluded: Basement 528 sq. ft, Covered patio 222 sq. ft, Patio 180 sq. ft, Deck 106 sq. ft, Bath 30 sq. ft, Walls: 214 sq. ft

Property summary

 **3** Floors

 **3** Bedrooms

 **2** Bathrooms

Home data report

19805 East 58th Place, Aurora, Adams County, Colorado, United States, 80019



1
Half baths



1
Garages

Home data report

19805 East 58th Place, Aurora, Adams County, Colorado, United States, 80019



Room dimensions

Floor 1 Below grade

Total:0sqft

Excluded: 528sqft

#		Dimensions	sqft	Counted as living area
1	Basement	17'7" x 33'11"	597 sq. ft	No

Home data report

19805 East 58th Place, Aurora, Adams County, Colorado, United States, 80019



Room dimensions

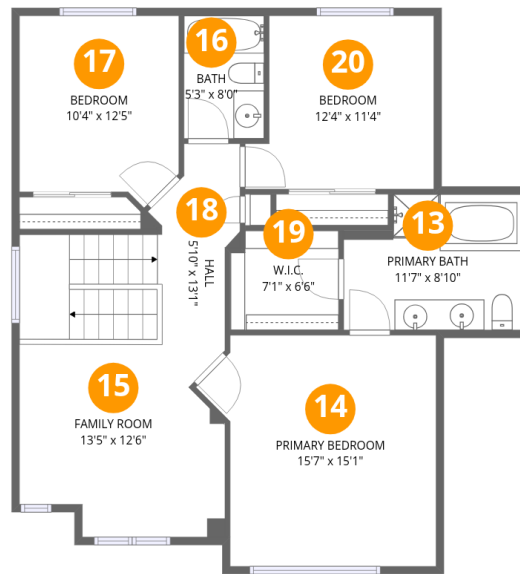
Floor 2

Total:1220sqft Excluded: 538sqft

#		Dimensions	sqft	Counted as living area
2	Living Room	16'3" x 15'4"	249 sq. ft	Yes
3	Kitchen	9'4" x 13'11"	129 sq. ft	Yes
4	Bath	5'6" x 5'5"	30 sq. ft	No
5	Laundry	5'6" x 5'5"	30 sq. ft	Yes
6	Covered Patio	17'3" x 12'10"	222 sq. ft	No
7	Dining Area	7'3" x 13'11"	100 sq. ft	Yes
8	Deck	9'11" x 10'7"	106 sq. ft	No
9	Hall	3'3" x 5'9"	19 sq. ft	Yes
10	Garage	19'1" x 20'9"	395 sq. ft	Yes
11	Living Room	13'3" x 20'0"	265 sq. ft	Yes
12	Patio	19'5" x 14'9"	286 sq. ft	No

Home data report

19805 East 58th Place, Aurora, Adams County, Colorado, United States, 80019



Room dimensions

Floor 3

Total:986sqft

Excluded: 0sqft

#		Dimensions	sqft	Counted as living area
13	Primary Bath	11'7" x 8'10"	103 sq. ft	Yes
14	Primary Bedroom	15'7" x 15'1"	235 sq. ft	Yes
15	Family Room	13'5" x 12'6"	168 sq. ft	Yes
16	Bath	5'3" x 8'0"	42 sq. ft	Yes
17	Bedroom	10'4" x 12'5"	129 sq. ft	Yes
18	Hall	5'10" x 13'1"	76 sq. ft	Yes
19	W.I.C.	7'1" x 6'6"	46 sq. ft	Yes
20	Bedroom	12'4" x 11'4"	139 sq. ft	Yes

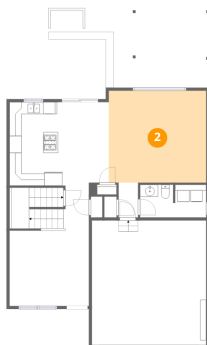
1 Floor 1 - Basement



Dimensions: 17'7" x 33'11"
Area: 597 sq. ft
Counted as living area: No

Heated: Yes
Finished: No
Enclosed: Yes
Contiguous: Yes
Permitted: Yes
Wet space: No
Addition: No
Conversion: No

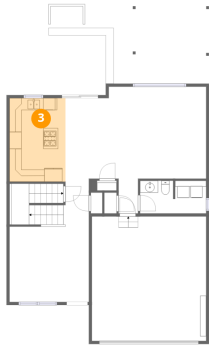
2 Floor 2 - Living Room



Dimensions: 16'3" x 15'4"
Area: 249 sq. ft
Counted as living area: Yes

Heated: Yes
Finished: Yes
Enclosed: Yes
Contiguous: Yes
Permitted: Yes
Wet space: No
Addition: No
Conversion: No

3 Floor 2 - Kitchen



Dimensions: 9'4" x 13'11"
Area: 129 sq. ft
Counted as living area: Yes

Heated: Yes
Finished: Yes
Enclosed: Yes
Contiguous: Yes
Permitted: Yes
Wet space: No
Addition: No
Conversion: No

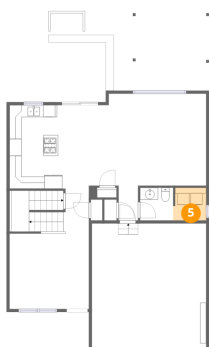
4 Floor 2 - Bath



Dimensions: 5'6" x 5'5"
Area: 30 sq. ft
Counted as living area: No

Heated: No
Finished: No
Enclosed: No
Contiguous: Yes
Permitted: No
Wet space: No
Addition: No
Conversion: No

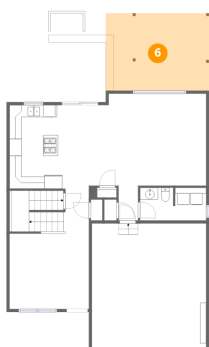
5 Floor 2 - Laundry



Dimensions: 5'6" x 5'5"
Area: 30 sq. ft
Counted as living area: No

Heated: Yes
Finished: Yes
Enclosed: Yes
Contiguous: No
Permitted: Yes
Wet space: No
Addition: No
Conversion: No

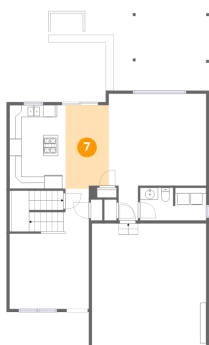
6 Floor 2 - Covered Patio



Dimensions: 17'3" x 12'10"
Area: 222 sq. ft
Counted as living area: No

Heated: No
Finished: No
Enclosed: No
Contiguous: Yes
Permitted: Yes
Wet space: No
Addition: No
Conversion: No

7 Floor 2 - Dining Area



Dimensions: 7'3" x 13'11"
Area: 100 sq. ft
Counted as living area: Yes

Heated: Yes
Finished: Yes
Enclosed: Yes
Contiguous: Yes
Permitted: Yes
Wet space: No
Addition: No
Conversion: No

8 Floor 2 - Deck



Dimensions: 9'11" x 10'7"
Area: 106 sq. ft
Counted as living area: No

Heated: No
Finished: No
Enclosed: No
Contiguous: Yes
Permitted: Yes
Wet space: No
Addition: No
Conversion: No

9 Floor 2 - Hall



Dimensions: 3'3" x 5'9"
Area: 19 sq. ft
Counted as living area: Yes

Heated: Yes
Finished: Yes
Enclosed: Yes
Contiguous: Yes
Permitted: Yes
Wet space: No
Addition: No
Conversion: No

10 Floor 2 - Garage



Dimensions: 19'1" x 20'9"
Area: 395 sq. ft
Counted as living area: No

Heated: No
Finished: Yes
Enclosed: Yes
Contiguous: Yes
Permitted: Yes
Wet space: No
Addition: No
Conversion: No

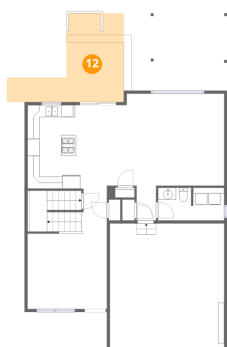
11 Floor 2 - Living Room



Dimensions: 13'3" x 20'0"
Area: 265 sq. ft
Counted as living area: Yes

Heated: Yes
Finished: Yes
Enclosed: Yes
Contiguous: Yes
Permitted: Yes
Wet space: No
Addition: No
Conversion: No

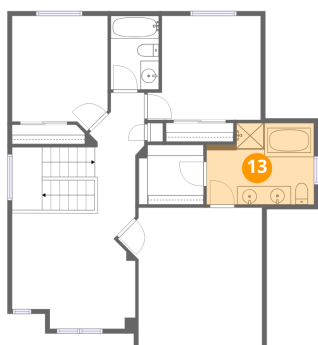
12 Floor 2 - Patio



Dimensions: 19'5" x 14'9"
Area: 286 sq. ft
Counted as living area: No

Heated: No
Finished: No
Enclosed: No
Contiguous: Yes
Permitted: Yes
Wet space: No
Addition: No
Conversion: No

13 Floor 3 - Primary Bath



Dimensions: 11'7" x 8'10"
Area: 103 sq. ft
Counted as living area: Yes

Heated: Yes
Finished: Yes
Enclosed: Yes
Contiguous: Yes
Permitted: Yes
Wet space: Yes
Addition: No
Conversion: No

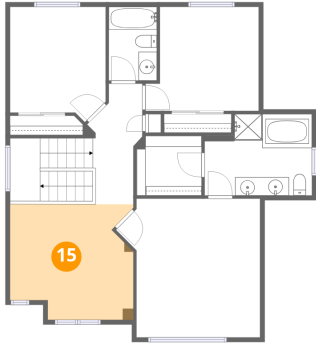
14 Floor 3 - Primary Bedroom



Dimensions: 15'7" x 15'1"
Area: 235 sq. ft
Counted as living area: Yes

Heated: Yes
Finished: Yes
Enclosed: Yes
Contiguous: Yes
Permitted: Yes
Wet space: No
Addition: No
Conversion: No

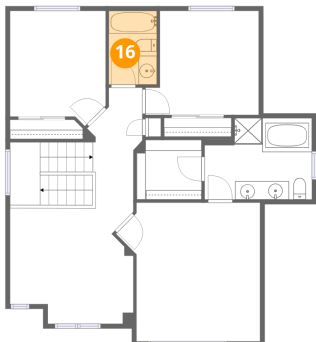
15 Floor 3 - Family Room



Dimensions: 13'5" x 12'6"
Area: 168 sq. ft
Counted as living area: Yes

Heated: Yes
Finished: Yes
Enclosed: Yes
Contiguous: Yes
Permitted: Yes
Wet space: No
Addition: No
Conversion: No

16 Floor 3 - Bath



Dimensions: 5'3" x 8'0"
Area: 42 sq. ft
Counted as living area: Yes

Heated: Yes
Finished: Yes
Enclosed: Yes
Contiguous: Yes
Permitted: Yes
Wet space: Yes
Addition: No
Conversion: No

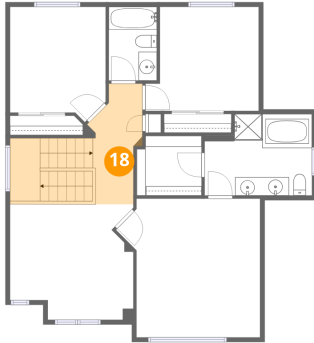
17 Floor 3 - Bedroom



Dimensions: 10'4" x 12'5"
Area: 129 sq. ft
Counted as living area: Yes

Heated: Yes
Finished: Yes
Enclosed: Yes
Contiguous: Yes
Permitted: Yes
Wet space: No
Addition: No
Conversion: No

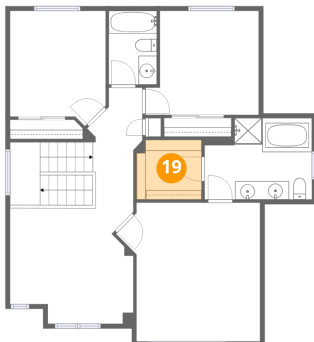
18 Floor 3 - Hall



Dimensions: 5'10" x 13'1"
Area: 76 sq. ft
Counted as living area: Yes

Heated: Yes
Finished: Yes
Enclosed: Yes
Contiguous: Yes
Permitted: Yes
Wet space: No
Addition: No
Conversion: No

19 Floor 3 - W.I.C.



Dimensions: 7'1" x 6'6"
Area: 46 sq. ft
Counted as living area: Yes

Heated: Yes
Finished: Yes
Enclosed: Yes
Contiguous: Yes
Permitted: Yes
Wet space: No
Addition: No
Conversion: No

20 Floor 3 - Bedroom



Dimensions: 12'4" x 11'4"
Area: 139 sq. ft
Counted as living area: Yes

Heated: Yes
Finished: Yes
Enclosed: Yes
Contiguous: Yes
Permitted: Yes
Wet space: No
Addition: No
Conversion: No