



### Total Area: 3739 sq. ft

1st Floor: 3136 sq. ft, 2nd Floor: 603 sq. ft

Excluded: Storage 221 sq. ft, Garage 1076 sq. ft, Porch 195 sq. ft, Deck 861 sq. ft, Low ceiling 605 sq. ft, Attic 1589 sq. ft

### Property summary

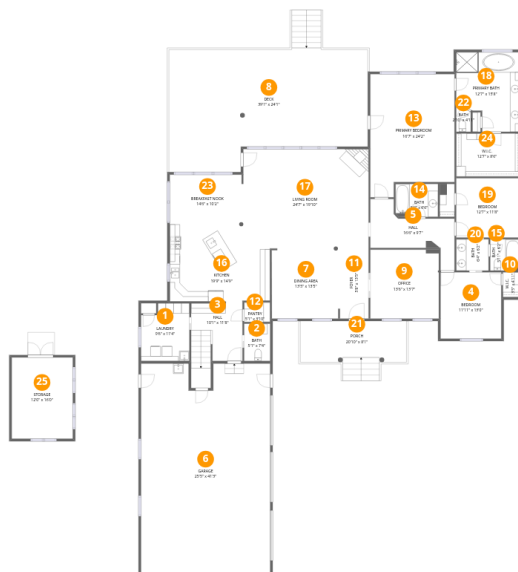


Home data report

**17821 Carlow Rd,Cornelius,NC,US**

 **1**  
Half baths

 **1**  
Garages



## Room dimensions

Floor 1

Total: 3136 sqft

Excluded: 2353 sqft

#		Dimensions	sqft	Counted as living area
1	Laundry	9'6" x 11'4"	108 sq. ft	Yes
2	Bath	5'1" x 7'4"	37 sq. ft	Yes
3	Hall	10'1" x 11'8"	118 sq. ft	Yes
4	Bedroom	11'11" x 13'0"	155 sq. ft	Yes
5	Hall	16'6" x 9'7"	158 sq. ft	Yes
6	Garage	25'5" x 41'3"	1047 sq. ft	No
7	Dining Area	13'5" x 13'5"	180 sq. ft	Yes
8	Deck	39'1" x 24'1"	940 sq. ft	No
9	Office	13'6" x 13'7"	183 sq. ft	Yes
10	W.I.C.	3'5" x 4'11"	17 sq. ft	Yes
11	Foyer	5'8" x 13'5"	76 sq. ft	Yes

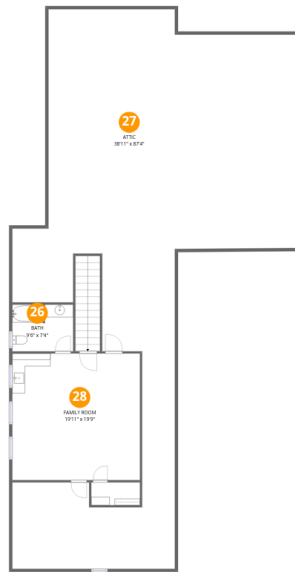
Home data report

17821 Carlow Rd,Cornelius,NC,US

#		Dimensions	sqft	Counted as living area
12	Pantry	5'1" x 3'10"	20 sq. ft	Yes
13	Primary Bedroom	16'7" x 24'2"	401 sq. ft	Yes
14	Bath	8'4" x 6'6"	54 sq. ft	Yes
15	Bath	5'11" x 6'2"	36 sq. ft	Yes
16	Kitchen	19'9" x 14'9"	291 sq. ft	Yes
17	Living Room	24'7" x 19'10"	488 sq. ft	Yes
18	Primary Bath	12'7" x 15'8"	197 sq. ft	Yes
19	Bedroom	12'7" x 11'8"	147 sq. ft	Yes
20	Bath	6'4" x 6'2"	39 sq. ft	Yes
21	Porch	20'10" x 8'1"	169 sq. ft	No
22	Bath	2'10" x 4'11"	14 sq. ft	Yes
23	Breakfast Nook	14'6" x 10'2"	147 sq. ft	Yes
24	W.I.C.	12'7" x 8'6"	107 sq. ft	Yes
25	Storage	12'0" x 16'0"	192 sq. ft	No

Home data report

17821 Carlow Rd,Cornelius,NC,US



## Room dimensions

Floor 2

Total:603sqft

Excluded: 2194sqft

#		Dimensions	sqft	Counted as living area
26	Bath	9'6" x 7'4"	69 sq. ft	Yes
27	Attic	38'11" x 87'4"	3398 sq. ft	No
28	Family Room	19'11" x 19'9"	394 sq. ft	Yes

## 1 Floor 1 - Laundry

---



**Dimensions:** 9'6" x 11'4"  
**Area:** 108 sq. ft  
**Counted as living area:** Yes

**Heated:** Yes  
**Finished:** Yes  
**Enclosed:** Yes  
**Contiguous:** Yes  
**Permitted:** Yes  
**Wet space:** No  
**Addition:** No  
**Conversion:** No

## 2 Floor 1 - Bath

---



**Dimensions:** 5'1" x 7'4"  
**Area:** 37 sq. ft  
**Counted as living area:** Yes

**Heated:** Yes  
**Finished:** Yes  
**Enclosed:** Yes  
**Contiguous:** Yes  
**Permitted:** Yes  
**Wet space:** Yes  
**Addition:** No  
**Conversion:** No

### 3 Floor 1 - Hall



Dimensions: 10'1" x 11'8"  
Area: 118 sq. ft  
Counted as living area: Yes

Heated: Yes  
Finished: Yes  
Enclosed: Yes  
Contiguous: Yes  
Permitted: Yes  
Wet space: No  
Addition: No  
Conversion: No

### 4 Floor 1 - Bedroom



Dimensions: 11'11" x 13'0"  
Area: 155 sq. ft  
Counted as living area: Yes

Heated: Yes  
Finished: Yes  
Enclosed: Yes  
Contiguous: Yes  
Permitted: Yes  
Wet space: No  
Addition: No  
Conversion: No

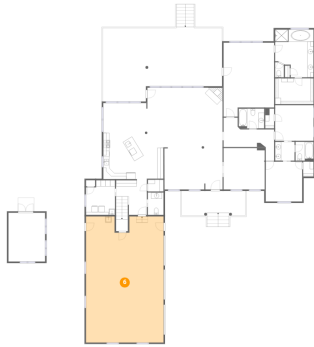
### 5 Floor 1 - Hall



Dimensions: 16'6" x 9'7"  
Area: 158 sq. ft  
Counted as living area: Yes

Heated: Yes  
Finished: Yes  
Enclosed: Yes  
Contiguous: Yes  
Permitted: Yes  
Wet space: No  
Addition: No  
Conversion: No

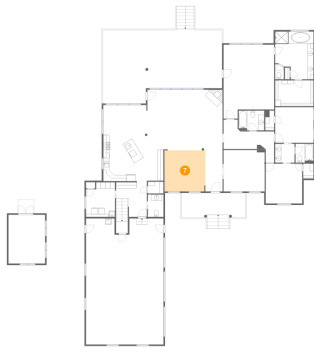
## 6 Floor 1 - Garage



Dimensions: 25'5" x 41'3"  
Area: 1047 sq. ft  
Counted as living area: No

Heated: No  
Finished: Yes  
Enclosed: Yes  
Contiguous: Yes  
Permitted: Yes  
Wet space: No  
Addition: No  
Conversion: No

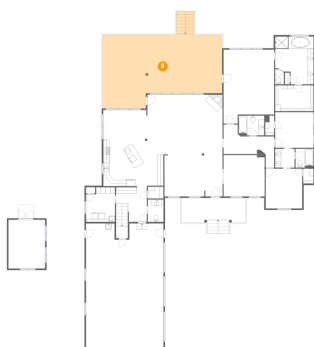
## 7 Floor 1 - Dining Area



Dimensions: 13'5" x 13'5"  
Area: 180 sq. ft  
Counted as living area: Yes

Heated: Yes  
Finished: Yes  
Enclosed: Yes  
Contiguous: Yes  
Permitted: Yes  
Wet space: No  
Addition: No  
Conversion: No

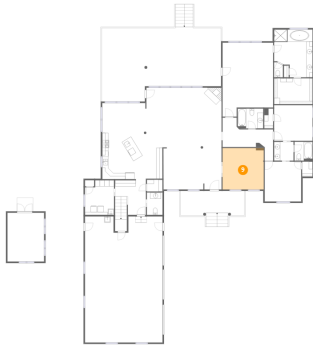
## 8 Floor 1 - Deck



Dimensions: 39'1" x 24'1"  
Area: 940 sq. ft  
Counted as living area: No

Heated: No  
Finished: No  
Enclosed: No  
Contiguous: Yes  
Permitted: Yes  
Wet space: No  
Addition: No  
Conversion: No

### 9 Floor 1 - Office



Dimensions: 13'6" x 13'7"  
Area: 183 sq. ft  
Counted as living area: Yes

Heated: Yes  
Finished: Yes  
Enclosed: Yes  
Contiguous: Yes  
Permitted: Yes  
Wet space: No  
Addition: No  
Conversion: No

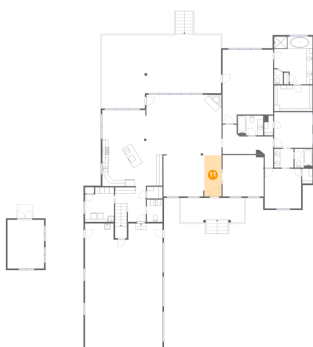
### 10 Floor 1 - W.I.C.



Dimensions: 3'5" x 4'11"  
Area: 17 sq. ft  
Counted as living area: Yes

Heated: Yes  
Finished: Yes  
Enclosed: Yes  
Contiguous: Yes  
Permitted: Yes  
Wet space: No  
Addition: No  
Conversion: No

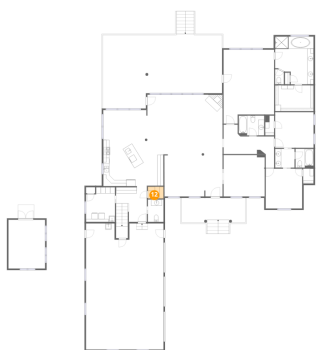
### 11 Floor 1 - Foyer



Dimensions: 5'8" x 13'5"  
Area: 76 sq. ft  
Counted as living area: Yes

Heated: Yes  
Finished: Yes  
Enclosed: Yes  
Contiguous: Yes  
Permitted: Yes  
Wet space: No  
Addition: No  
Conversion: No

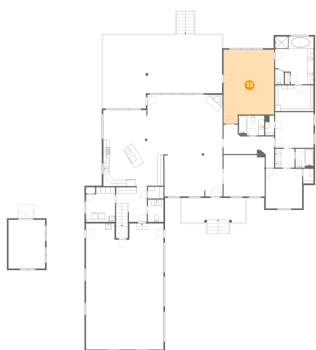
## 12 Floor 1 - Pantry



Dimensions: 5'1" x 3'10"  
Area: 20 sq. ft  
Counted as living area: Yes

Heated: Yes  
Finished: Yes  
Enclosed: Yes  
Contiguous: Yes  
Permitted: Yes  
Wet space: No  
Addition: No  
Conversion: No

## 13 Floor 1 - Primary Bedroom



Dimensions: 16'7" x 24'2"  
Area: 401 sq. ft  
Counted as living area: Yes

Heated: Yes  
Finished: Yes  
Enclosed: Yes  
Contiguous: Yes  
Permitted: Yes  
Wet space: No  
Addition: No  
Conversion: No

## 14 Floor 1 - Bath



Dimensions: 8'4" x 6'6"  
Area: 54 sq. ft  
Counted as living area: Yes

Heated: Yes  
Finished: Yes  
Enclosed: Yes  
Contiguous: Yes  
Permitted: Yes  
Wet space: Yes  
Addition: No  
Conversion: No

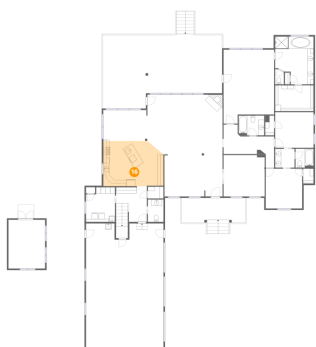
### 15 Floor 1 - Bath



Dimensions: 5'11" x 6'2"  
Area: 36 sq. ft  
Counted as living area: Yes

Heated: Yes  
Finished: Yes  
Enclosed: Yes  
Contiguous: Yes  
Permitted: Yes  
Wet space: Yes  
Addition: No  
Conversion: No

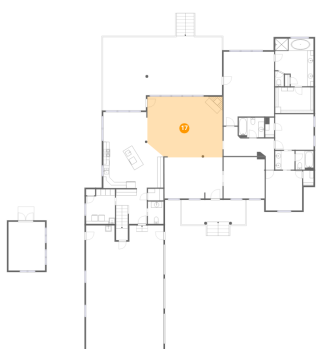
### 16 Floor 1 - Kitchen



Dimensions: 19'9" x 14'9"  
Area: 291 sq. ft  
Counted as living area: Yes

Heated: Yes  
Finished: Yes  
Enclosed: Yes  
Contiguous: Yes  
Permitted: Yes  
Wet space: No  
Addition: No  
Conversion: No

### 17 Floor 1 - Living Room



Dimensions: 24'7" x 19'10"  
Area: 488 sq. ft  
Counted as living area: Yes

Heated: Yes  
Finished: Yes  
Enclosed: Yes  
Contiguous: Yes  
Permitted: Yes  
Wet space: No  
Addition: No  
Conversion: No

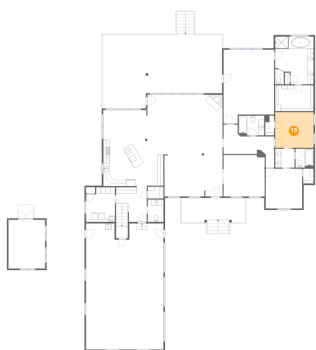
### 18 Floor 1 - Primary Bath



Dimensions: 12'7" x 15'8"  
Area: 197 sq. ft  
Counted as living area: Yes

Heated: Yes  
Finished: Yes  
Enclosed: Yes  
Contiguous: Yes  
Permitted: Yes  
Wet space: Yes  
Addition: No  
Conversion: No

### 19 Floor 1 - Bedroom



Dimensions: 12'7" x 11'8"  
Area: 147 sq. ft  
Counted as living area: Yes

Heated: Yes  
Finished: Yes  
Enclosed: Yes  
Contiguous: Yes  
Permitted: Yes  
Wet space: No  
Addition: No  
Conversion: No

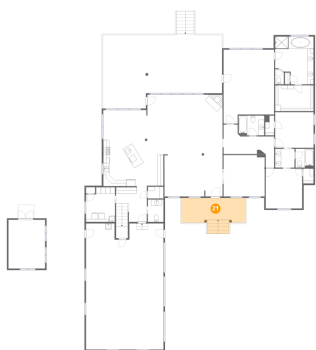
### 20 Floor 1 - Bath



Dimensions: 6'4" x 6'2"  
Area: 39 sq. ft  
Counted as living area: Yes

Heated: Yes  
Finished: Yes  
Enclosed: Yes  
Contiguous: Yes  
Permitted: Yes  
Wet space: Yes  
Addition: No  
Conversion: No

## 21 Floor 1 - Porch



Dimensions: 20'10" x 8'1"  
Area: 169 sq. ft  
Counted as living area: No

Heated: No  
Finished: No  
Enclosed: No  
Contiguous: Yes  
Permitted: Yes  
Wet space: No  
Addition: No  
Conversion: No

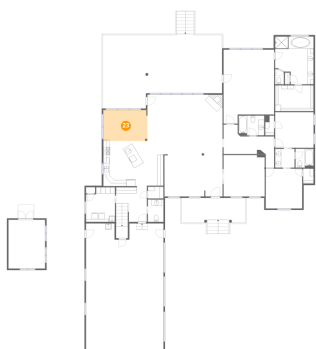
## 22 Floor 1 - Bath



Dimensions: 2'10" x 4'11"  
Area: 14 sq. ft  
Counted as living area: Yes

Heated: Yes  
Finished: Yes  
Enclosed: Yes  
Contiguous: Yes  
Permitted: Yes  
Wet space: No  
Addition: No  
Conversion: No

## 23 Floor 1 - Breakfast Nook



Dimensions: 14'6" x 10'2"  
Area: 147 sq. ft  
Counted as living area: Yes

Heated: Yes  
Finished: Yes  
Enclosed: Yes  
Contiguous: Yes  
Permitted: Yes  
Wet space: No  
Addition: No  
Conversion: No

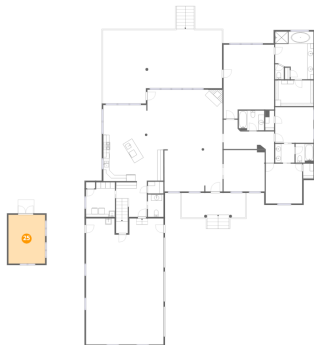
**24** Floor 1 - W.I.C.



Dimensions: 12'7" x 8'6"  
Area: 107 sq. ft  
Counted as living area: Yes

Heated: Yes  
Finished: Yes  
Enclosed: Yes  
Contiguous: Yes  
Permitted: Yes  
Wet space: No  
Addition: No  
Conversion: No

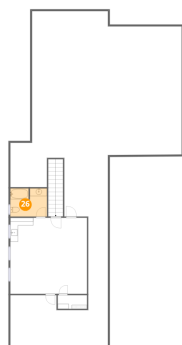
**25** Floor 1 - Storage



Dimensions: 12'0" x 16'0"  
Area: 192 sq. ft  
Counted as living area: No

Heated: No  
Finished: No  
Enclosed: No  
Contiguous: Yes  
Permitted: No  
Wet space: No  
Addition: No  
Conversion: No

**26** Floor 2 - Bath

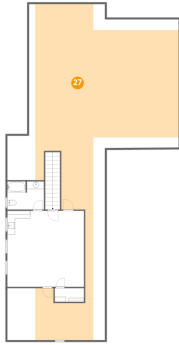


Dimensions: 9'6" x 7'4"  
Area: 69 sq. ft  
Counted as living area: Yes

Heated: Yes  
Finished: Yes  
Enclosed: Yes  
Contiguous: Yes  
Permitted: Yes  
Wet space: Yes  
Addition: No  
Conversion: No

**27** Floor 2 - Attic

---

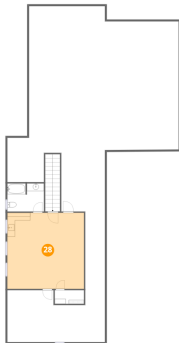


**Dimensions:** 38'11" x 87'4"  
**Area:** 3398 sq. ft  
**Counted as living area:** No

**Heated:** No  
**Finished:** No  
**Enclosed:** Yes  
**Contiguous:** Yes  
**Permitted:** Yes  
**Wet space:** No  
**Addition:** No  
**Conversion:** No

**28** Floor 2 - Family Room

---



**Dimensions:** 19'11" x 19'9"  
**Area:** 394 sq. ft  
**Counted as living area:** Yes

**Heated:** Yes  
**Finished:** Yes  
**Enclosed:** Yes  
**Contiguous:** Yes  
**Permitted:** Yes  
**Wet space:** No  
**Addition:** No  
**Conversion:** No