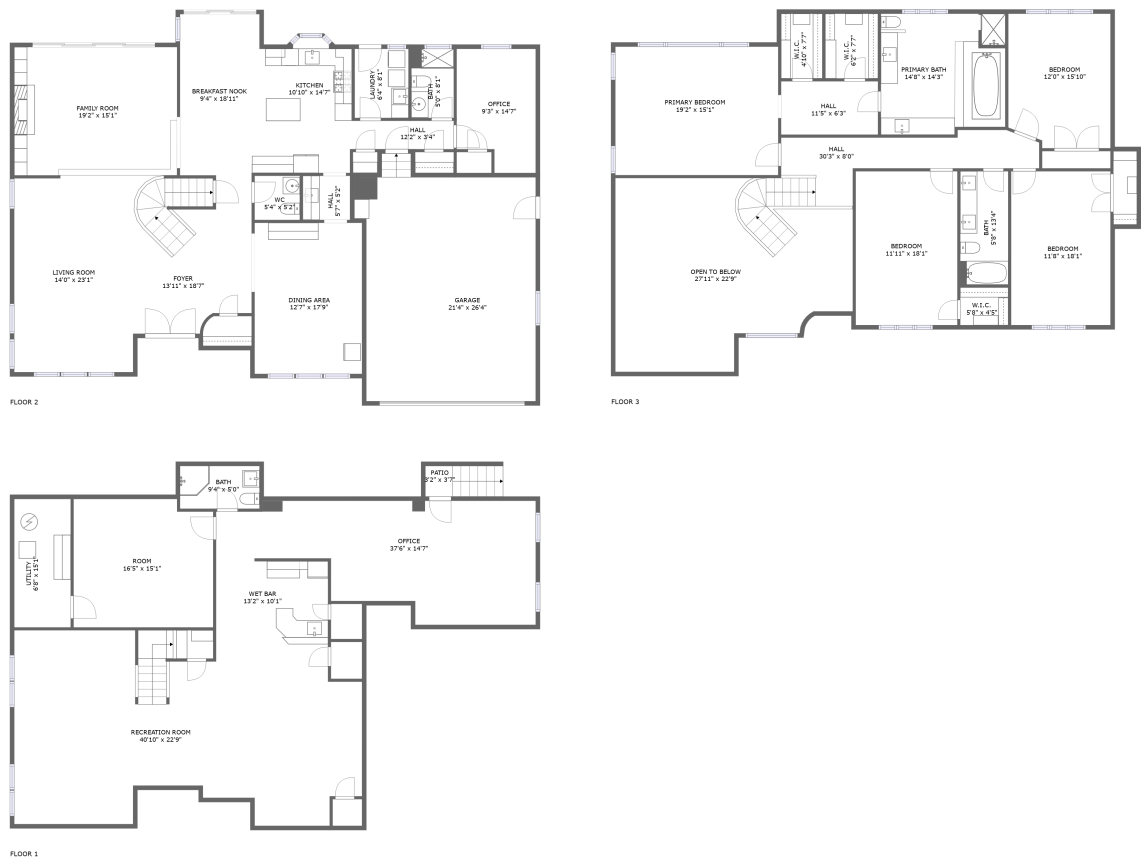


Home report

1 Ellen Court, Glen Cove, Nassau County, New York, United States, 11542



Total Area: 5206 sq. ft
Below Ground: 1720 sq. ft, Floor 2: 1820 sq. ft, Floor 3: 1666 sq. ft
Excluded: Utility 100 sq. ft, Patio 33 sq. ft, Garage 540 sq. ft, Embedded window 6 sq. ft,
Open to below 487 sq. ft, Walls: 357 sq. ft

Property summary

**3** Floors

**4** Bedrooms

**4** Bathrooms

Home report

1 Ellen Court, Glen Cove, Nassau County, New York, United States, 11542

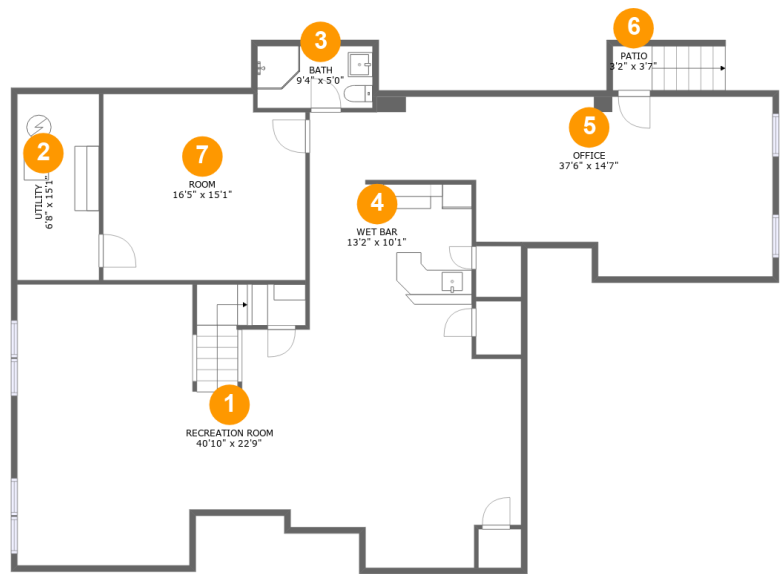


1
Half baths



1
Garages

1 Ellen Court, Glen Cove, Nassau County, New York, United States, 11542



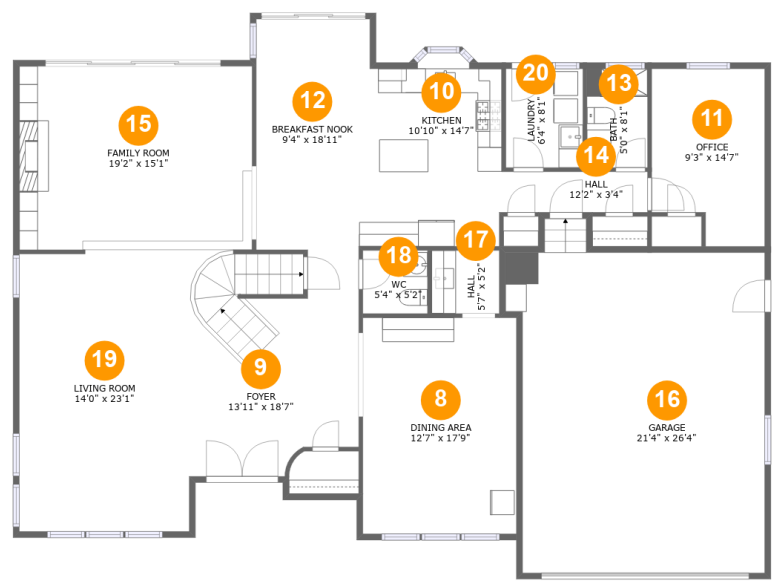
Room dimensions

Floor 1 Below ground Total:1720sqft Excluded: 133sqft

#		Max Dimensions	sqft	Included
1	Recreation Room	40'10" x 22'9"	795 sq. ft	Yes
2	Utility	6'8" x 15'1"	100 sq. ft	No
3	Bath	9'4" x 5'0"	47 sq. ft	Yes
4	Wet Bar	13'2" x 10'1"	129 sq. ft	Yes
5	Office	37'6" x 14'7"	407 sq. ft	Yes
6	Patio	3'2" x 3'7"	33 sq. ft	No
7	Room	16'5" x 15'1"	241 sq. ft	Yes

Home report

1 Ellen Court, Glen Cove, Nassau County, New York, United States, 11542



Room dimensions

Floor 2

Total:1820sqft

Excluded: 546sqft

#		Max Dimensions	sqft	Included
8	Dining Area	12'7" x 17'9"	224 sq. ft	Yes
9	Foyer	13'11" x 18'7"	227 sq. ft	Yes
10	Kitchen	10'10" x 14'7"	157 sq. ft	Yes
11	Office	9'3" x 14'7"	123 sq. ft	Yes
12	Breakfast Nook	9'4" x 18'11"	176 sq. ft	Yes
13	Bath	5'0" x 8'1"	40 sq. ft	Yes
14	Hall	12'2" x 3'4"	41 sq. ft	Yes
15	Family Room	19'2" x 15'1"	288 sq. ft	Yes
16	Garage	21'4" x 26'4"	540 sq. ft	No
17	Hall	5'7" x 5'2"	29 sq. ft	Yes
18	WC	5'4" x 5'2"	28 sq. ft	Yes

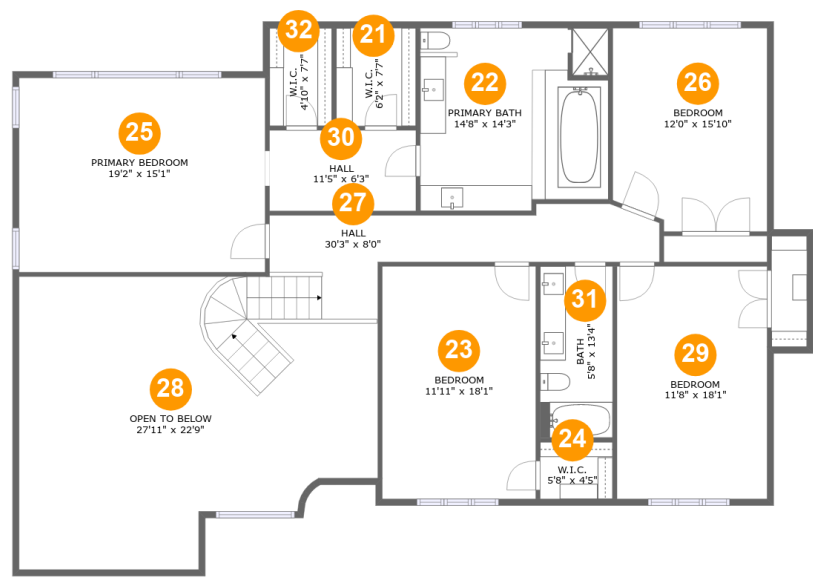
Home report

1 Ellen Court, Glen Cove, Nassau County, New York, United States, 11542

#		Max Dimensions	sqft	Included
19	Living Room	14'0" x 23'1"	321 sq. ft	Yes
20	Laundry	6'4" x 8'1"	51 sq. ft	Yes

Home report

1 Ellen Court, Glen Cove, Nassau County, New York, United States, 11542



Room dimensions

Floor 3 Total:1666sqft Excluded: 487sqft

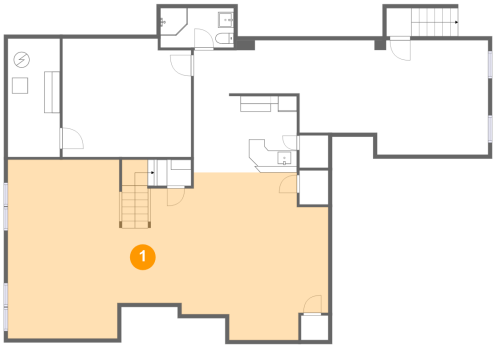
#		Max Dimensions	sqft	Included
21	W.I.C.	6'2" x 7'7"	47 sq. ft	Yes
22	Primary Bath	14'8" x 14'3"	201 sq. ft	Yes
23	Bedroom	11'11" x 18'1"	216 sq. ft	Yes
24	W.I.C.	5'8" x 4'5"	25 sq. ft	Yes
25	Primary Bedroom	19'2" x 15'1"	289 sq. ft	Yes
26	Bedroom	12'0" x 15'10"	183 sq. ft	Yes
27	Hall	30'3" x 8'0"	197 sq. ft	Yes
28	Open To Below	27'11" x 22'9"	486 sq. ft	No
29	Bedroom	11'8" x 18'1"	211 sq. ft	Yes
30	Hall	11'5" x 6'3"	71 sq. ft	Yes
31	Bath	5'8" x 13'4"	75 sq. ft	Yes

Home report

1 Ellen Court, Glen Cove, Nassau County, New York, United States, 11542

#		Max Dimensions	sqft	Included
32	W.I.C.	4'10" x 7'7"	37 sq. ft	Yes

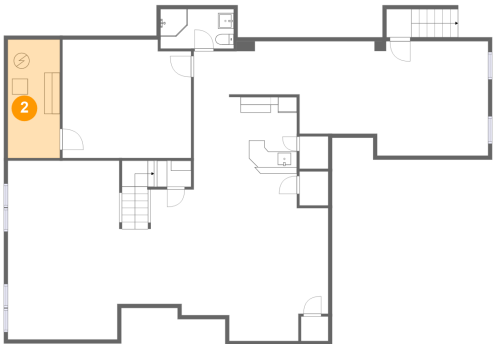
1 Floor 1 - Recreation Room



Max Dimensions: 40'10" x 22'9"
Calculated Area: 795 sq. ft
Included: Yes

Heated: Yes
Finished: Yes
Enclosed: Yes
Contiguous: Yes
Permitted: Yes
Wet space: No
Addition: No
Conversion: No

2 Floor 1 - Utility

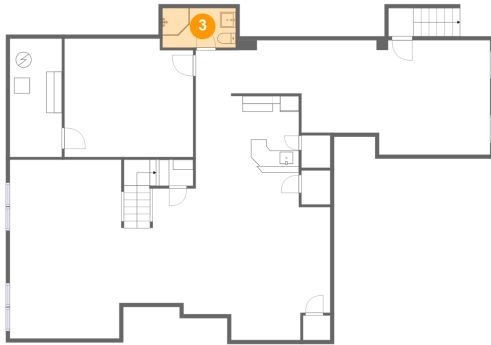


Max Dimensions: 6'8" x 15'1"
Calculated Area: 100 sq. ft
Included: No

Heated: Yes
Finished: No
Enclosed: Yes
Contiguous: Yes
Permitted: Yes
Wet space: No
Addition: No
Conversion: No

1 Ellen Court, Glen Cove, Nassau County, New York, United States, 11542

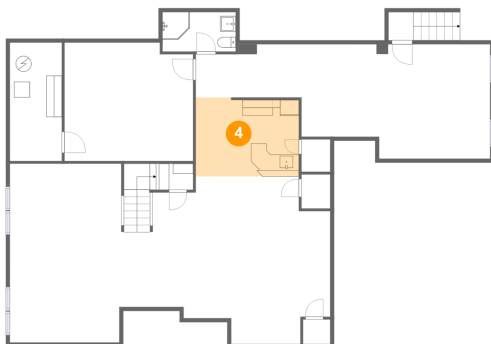
3 Floor 1 - Bath



Max Dimensions: 9'4" x 5'0"
Calculated Area: 47 sq. ft
Included: Yes

Heated: Yes
Finished: Yes
Enclosed: Yes
Contiguous: Yes
Permitted: Yes
Wet space: Yes
Addition: No
Conversion: No

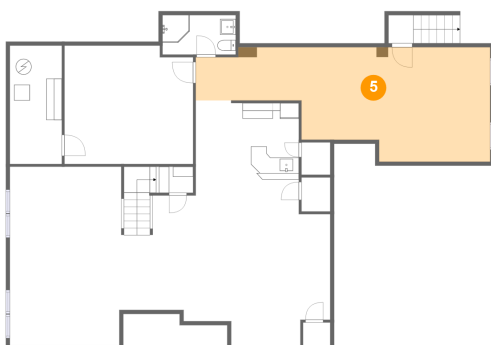
4 Floor 1 - Wet Bar



Max Dimensions: 13'2" x 10'1"
Calculated Area: 129 sq. ft
Included: Yes

Heated: Yes
Finished: Yes
Enclosed: Yes
Contiguous: Yes
Permitted: Yes
Wet space: No
Addition: No
Conversion: No

5 Floor 1 - Office

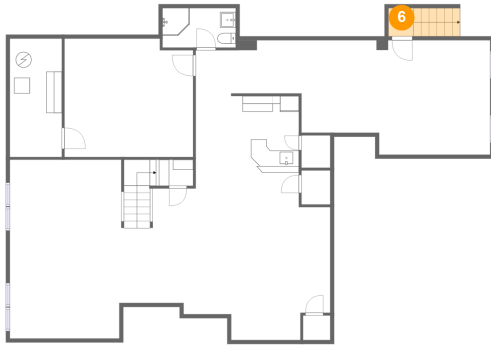


Max Dimensions: 37'6" x 14'7"
Calculated Area: 407 sq. ft
Included: Yes

Heated: Yes
Finished: Yes
Enclosed: Yes
Contiguous: Yes
Permitted: Yes
Wet space: No
Addition: No
Conversion: No

1 Ellen Court, Glen Cove, Nassau County, New York, United States, 11542

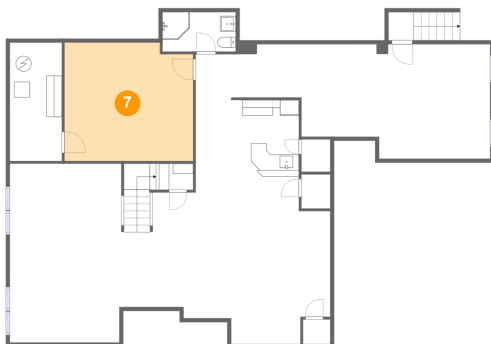
6 Floor 1 - Patio



Max Dimensions: 3'2" x 3'7"
Calculated Area: 33 sq. ft
Included: No

Heated: No
Finished: Yes
Enclosed: No
Contiguous: Yes
Permitted: Yes
Wet space: No
Addition: No
Conversion: No

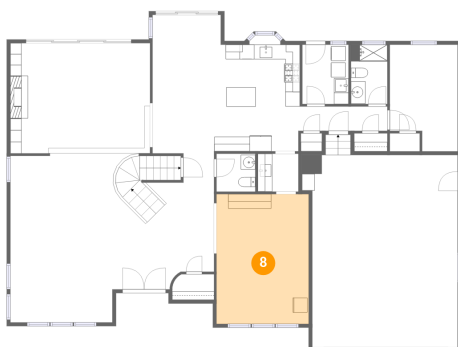
7 Floor 1 - Room



Max Dimensions: 16'5" x 15'1"
Calculated Area: 241 sq. ft
Included: Yes

Heated: Yes
Finished: Yes
Enclosed: Yes
Contiguous: Yes
Permitted: Yes
Wet space: No
Addition: No
Conversion: No

8 Floor 2 - Dining Area



Max Dimensions: 12'7" x 17'9"
Calculated Area: 224 sq. ft
Included: Yes

Heated: Yes
Finished: Yes
Enclosed: Yes
Contiguous: Yes
Permitted: Yes
Wet space: No
Addition: No
Conversion: No

1 Ellen Court, Glen Cove, Nassau County, New York, United States, 11542

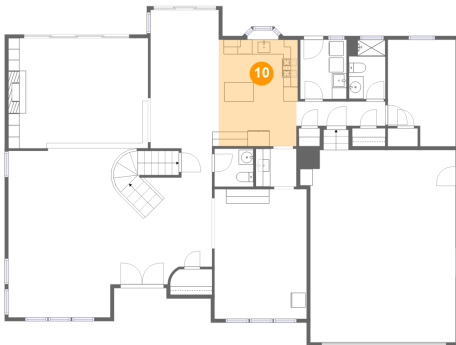
9 Floor 2 - Foyer



Max Dimensions: 13'11" x 18'7"
Calculated Area: 227 sq. ft
Included: Yes

Heated: Yes
Finished: Yes
Enclosed: Yes
Contiguous: Yes
Permitted: Yes
Wet space: No
Addition: No
Conversion: No

10 Floor 2 - Kitchen



Max Dimensions: 10'10" x 14'7"
Calculated Area: 157 sq. ft
Included: Yes

Heated: Yes
Finished: Yes
Enclosed: Yes
Contiguous: Yes
Permitted: Yes
Wet space: No
Addition: No
Conversion: No

11 Floor 2 - Office



Max Dimensions: 9'3" x 14'7"
Calculated Area: 123 sq. ft
Included: Yes

Heated: Yes
Finished: Yes
Enclosed: Yes
Contiguous: Yes
Permitted: Yes
Wet space: No
Addition: No
Conversion: No

1 Ellen Court, Glen Cove, Nassau County, New York, United States, 11542

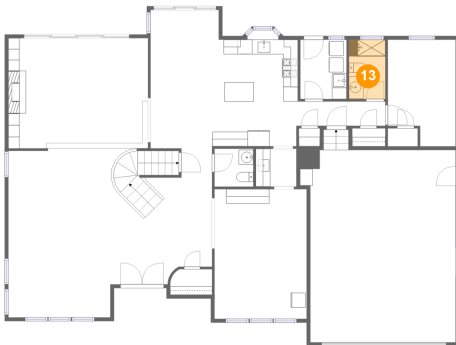
12 Floor 2 - Breakfast Nook



Max Dimensions: 9'4" x 18'11"
Calculated Area: 176 sq. ft
Included: Yes

Heated: Yes
Finished: Yes
Enclosed: Yes
Contiguous: Yes
Permitted: Yes
Wet space: No
Addition: No
Conversion: No

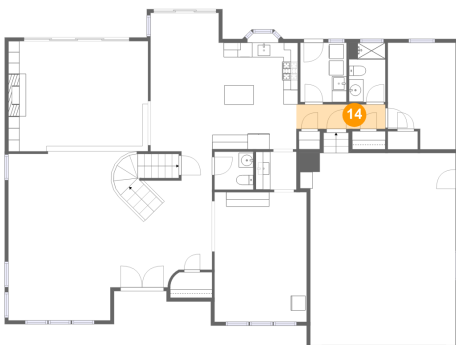
13 Floor 2 - Bath



Max Dimensions: 5'0" x 8'1"
Calculated Area: 40 sq. ft
Included: Yes

Heated: Yes
Finished: Yes
Enclosed: Yes
Contiguous: Yes
Permitted: Yes
Wet space: Yes
Addition: No
Conversion: No

14 Floor 2 - Hall



Max Dimensions: 12'2" x 3'4"
Calculated Area: 41 sq. ft
Included: Yes

Heated: Yes
Finished: Yes
Enclosed: Yes
Contiguous: Yes
Permitted: Yes
Wet space: No
Addition: No
Conversion: No

1 Ellen Court, Glen Cove, Nassau County, New York, United States, 11542

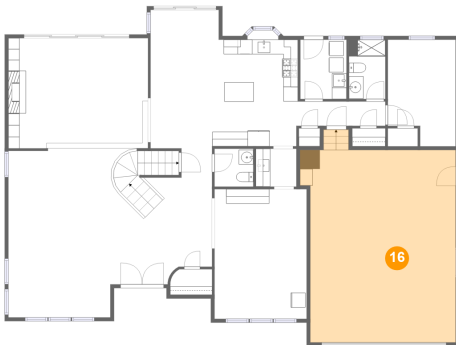
15 Floor 2 - Family Room



Max Dimensions: 19'2" x 15'1"
Calculated Area: 288 sq. ft
Included: Yes

Heated: Yes
Finished: Yes
Enclosed: Yes
Contiguous: Yes
Permitted: Yes
Wet space: No
Addition: No
Conversion: No

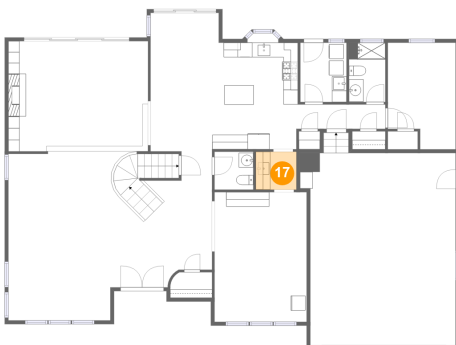
16 Floor 2 - Garage



Max Dimensions: 21'4" x 26'4"
Calculated Area: 540 sq. ft
Included: No

Heated: No
Finished: No
Enclosed: Yes
Contiguous: Yes
Permitted: Yes
Wet space: No
Addition: No
Conversion: No

17 Floor 2 - Hall



Max Dimensions: 5'7" x 5'2"
Calculated Area: 29 sq. ft
Included: Yes

Heated: Yes
Finished: Yes
Enclosed: Yes
Contiguous: Yes
Permitted: Yes
Wet space: No
Addition: No
Conversion: No

1 Ellen Court, Glen Cove, Nassau County, New York, United States, 11542

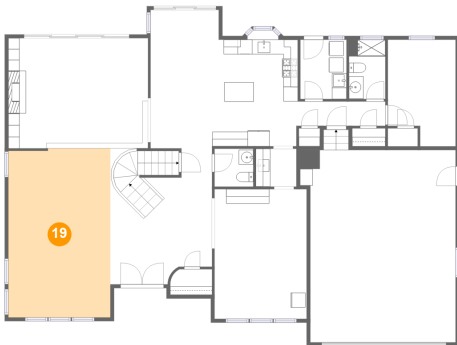
18 Floor 2 - WC



Max Dimensions: 5'4" x 5'2"
Calculated Area: 28 sq. ft
Included: Yes

Heated: Yes
Finished: Yes
Enclosed: Yes
Contiguous: Yes
Permitted: Yes
Wet space: Yes
Addition: No
Conversion: No

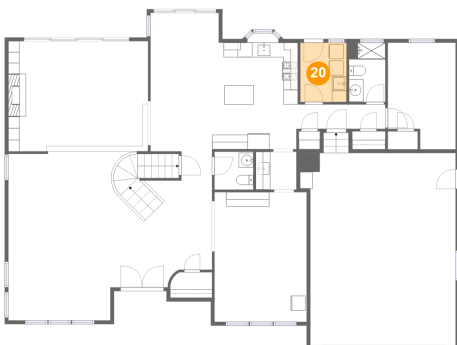
19 Floor 2 - Living Room



Max Dimensions: 14'0" x 23'1"
Calculated Area: 321 sq. ft
Included: Yes

Heated: Yes
Finished: Yes
Enclosed: Yes
Contiguous: Yes
Permitted: Yes
Wet space: No
Addition: No
Conversion: No

20 Floor 2 - Laundry

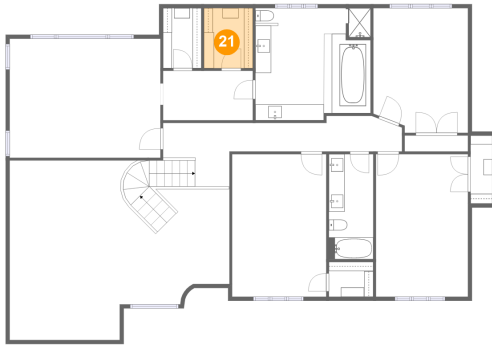


Max Dimensions: 6'4" x 8'1"
Calculated Area: 51 sq. ft
Included: Yes

Heated: Yes
Finished: Yes
Enclosed: Yes
Contiguous: Yes
Permitted: Yes
Wet space: No
Addition: No
Conversion: No

1 Ellen Court, Glen Cove, Nassau County, New York, United States, 11542

21 Floor 3 - W.I.C.



Max Dimensions: 6'2" x 7'7"
Calculated Area: 47 sq. ft
Included: Yes

Heated: Yes
Finished: Yes
Enclosed: Yes
Contiguous: Yes
Permitted: Yes
Wet space: No
Addition: No
Conversion: No

22 Floor 3 - Primary Bath



Max Dimensions: 14'8" x 14'3"
Calculated Area: 201 sq. ft
Included: Yes

Heated: Yes
Finished: Yes
Enclosed: Yes
Contiguous: Yes
Permitted: Yes
Wet space: Yes
Addition: No
Conversion: No

23 Floor 3 - Bedroom



Max Dimensions: 11'11" x 18'1"
Calculated Area: 216 sq. ft
Included: Yes

Heated: Yes
Finished: Yes
Enclosed: Yes
Contiguous: Yes
Permitted: Yes
Wet space: No
Addition: No
Conversion: No

1 Ellen Court, Glen Cove, Nassau County, New York, United States, 11542

24 Floor 3 - W.I.C.



Max Dimensions: 5'8" x 4'5"
Calculated Area: 25 sq. ft
Included: Yes

Heated: Yes
Finished: Yes
Enclosed: Yes
Contiguous: Yes
Permitted: Yes
Wet space: No
Addition: No
Conversion: No

25 Floor 3 - Primary Bedroom



Max Dimensions: 19'2" x 15'1"
Calculated Area: 289 sq. ft
Included: Yes

Heated: Yes
Finished: Yes
Enclosed: Yes
Contiguous: Yes
Permitted: Yes
Wet space: No
Addition: No
Conversion: No

26 Floor 3 - Bedroom

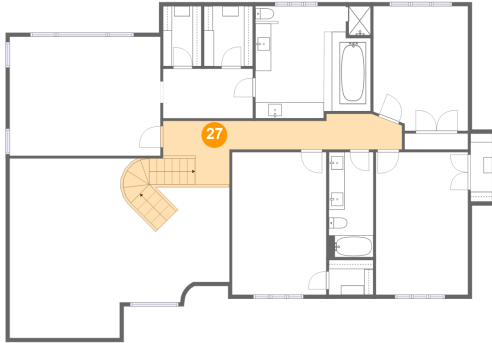


Max Dimensions: 12'0" x 15'10"
Calculated Area: 183 sq. ft
Included: Yes

Heated: Yes
Finished: Yes
Enclosed: Yes
Contiguous: Yes
Permitted: Yes
Wet space: No
Addition: No
Conversion: No

1 Ellen Court, Glen Cove, Nassau County, New York, United States, 11542

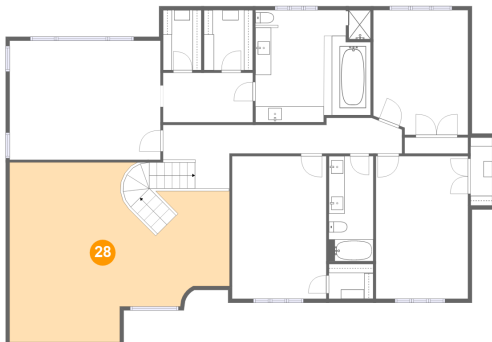
27 Floor 3 - Hall



Max Dimensions: 30'3" x 8'0"
Calculated Area: 197 sq. ft
Included: Yes

Heated: Yes
Finished: Yes
Enclosed: Yes
Contiguous: Yes
Permitted: Yes
Wet space: No
Addition: No
Conversion: No

28 Floor 3 - Open To Below



Max Dimensions: 27'11" x 22'9"
Calculated Area: 486 sq. ft
Included: No

Heated: No
Finished: No
Enclosed: No
Contiguous: Yes
Permitted: No
Wet space: No
Addition: No
Conversion: No

29 Floor 3 - Bedroom



Max Dimensions: 11'8" x 18'1"
Calculated Area: 211 sq. ft
Included: Yes

Heated: Yes
Finished: Yes
Enclosed: Yes
Contiguous: Yes
Permitted: Yes
Wet space: No
Addition: No
Conversion: No

1 Ellen Court, Glen Cove, Nassau County, New York, United States, 11542

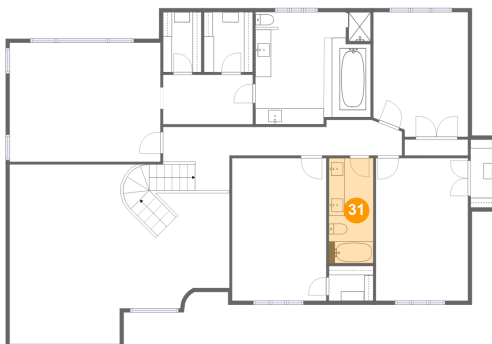
30 Floor 3 - Hall



Max Dimensions: 11'5" x 6'3"
Calculated Area: 71 sq. ft
Included: Yes

Heated: Yes
Finished: Yes
Enclosed: Yes
Contiguous: Yes
Permitted: Yes
Wet space: No
Addition: No
Conversion: No

31 Floor 3 - Bath



Max Dimensions: 5'8" x 13'4"
Calculated Area: 75 sq. ft
Included: Yes

Heated: Yes
Finished: Yes
Enclosed: Yes
Contiguous: Yes
Permitted: Yes
Wet space: Yes
Addition: No
Conversion: No

32 Floor 3 - W.I.C.



Max Dimensions: 4'10" x 7'7"
Calculated Area: 37 sq. ft
Included: Yes

Heated: Yes
Finished: Yes
Enclosed: Yes
Contiguous: Yes
Permitted: Yes
Wet space: No
Addition: No
Conversion: No