

1367 Gull Crossing

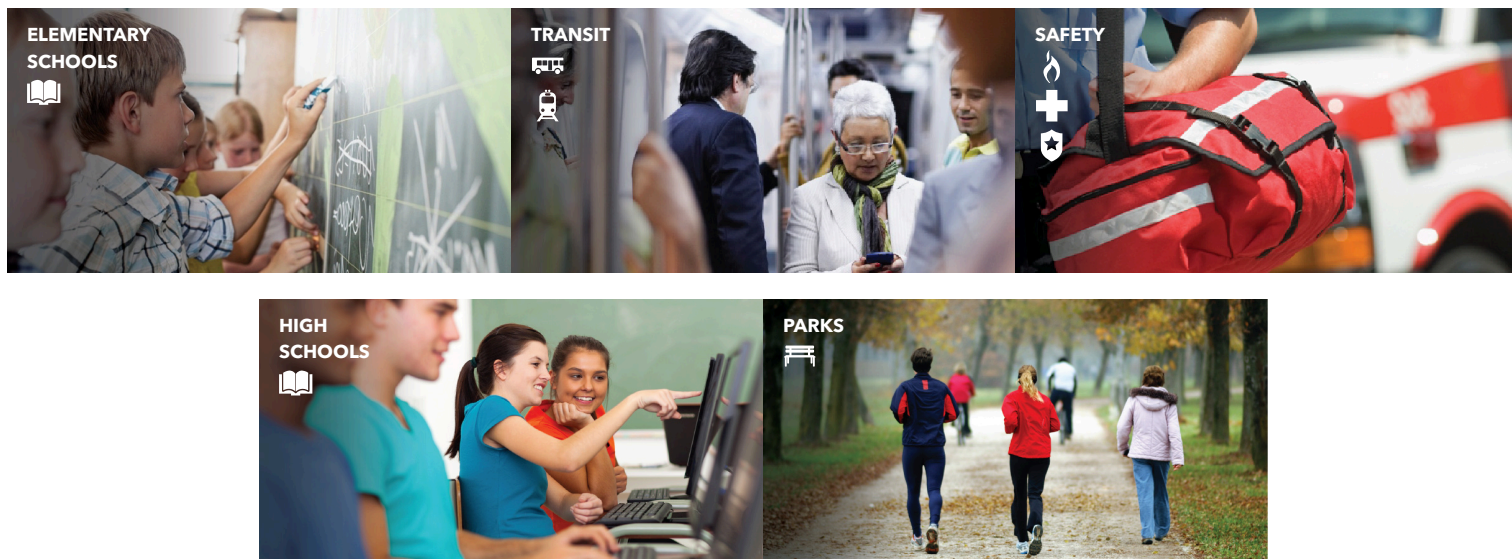
Pickering, ON

HOODQ ADDRESS REPORT™

SJ Photography

416.564.1415

<http://www.sjvirtualtours.ca>



PUBLIC SCHOOLS (ASSIGNED)

Your neighbourhood is part of a community of Public Schools offering Elementary, Middle, and High School programming. See the closest Public Schools near you below:

Biidassige Mandamin PS



about a 7 minute walk - 0.49 KM

Pre-Kindergarten, Kindergarten, Elementary and Middle

777 Balaton Ave, Pickering, ON L1W 1W7, Canada

Formerly called Sir John A. Macdonald Public School, Biidassige Mandamin PS is a triple track school located in a well established neighbourhood in south Pickering. We currently have approximately 200 students in English classes ranging from Junior Kindergarten to grade 8 and close to 300 students in grade 1 to grade 8 French Immersion programs. As well, our school has three self-contained special education classes serving some of the special needs students in the region. Our strong academic focus reinforces the ongoing literacy, numeracy and assessment strategies in place to support all learners. All of our staff focus on using a differentiated approach to learning which takes into account student interests, learning styles, as well as academic readiness. Staff, students and parents work together to provide a rich educational experience.

<https://biidaasigemandamin.ddsb.ca...>

Address	777 Balaton Ave, Pickering, ON L1W 1W7, Canada
Language	English
Date Opened	9/1/1969
Grade Level	Pre-Kindergarten, Kindergarten, Elementary and Middle
School Type	Public
Phone Number	905-839-1159
School Board	Durham DSB
School Number	515523
Grades Offered	PK to 8
Additional Details	French Immersion and Special Needs Program
School Board Number	B66060

É Élémond-Ronald-Marion

4.55 KM away

Pre-Kindergarten, Kindergarten and Elementary

2235 Brock Rd, Pickering, ON L1V 2P8, Canada

<https://cviomonde.ca...>

Address	2235 Brock Rd, Pickering, ON L1V 2P8, Canada
Language	French
Date Opened	9/3/2013

Grade Level	Pre-Kindergarten, Kindergarten and Elementary
School Type	Public
Phone Number	905-683-9730
School Board	CS Viamonde
School Number	298133
Grades Offered	PK to 6
School Board Number	B66303

Pine Ridge SS

3.75 KM away

High

2155 Liverpool Rd, Pickering, ON L1X, Canada

Pine Ridge opened its doors for the first time in September 1992. We are located a natural setting, surrounded by a conservation area and a retreat. Staff and students enjoy all the benefits of a modern, technologically advanced facility. We are considered to be a large school and expanded our size by adding twenty classrooms in 2001. At Pine Ridge, we are proud of our rich diversity. We also have an incredibly vibrant extracurricular program. Our focus is on the success of all students. Our staff members are committed to offering our students the highest quality educational opportunities and are accountable for their learning. We are supported by a school community that values involvement in the success of their children. Character education is an important focus of our curriculum.

<https://pineridgess.ddsb.ca...>

Address	2155 Liverpool Rd, Pickering, ON L1X, Canada
Language	English
Date Opened	9/1/1992
Grade Level	High
School Type	Public
Phone Number	905-420-1885
School Board	Durham DSB
School Number	935360
Grades Offered	9 to 12
School Board Number	B66060

És Ronald-Marion

4.55 KM away

High

2235 Brock Rd, Pickering, ON L1V 2P8, Canada

<https://csviamonde.ca...>

Address	2235 Brock Rd, Pickering, ON L1V 2P8, Canada
Language	French
Date Opened	9/3/2013
Grade Level	High
School Type	Public
Phone Number	905-683-9730
School Board	CS Viamonde
School Number	901037
Grades Offered	7 to 12
Additional Details	Advanced Placement
School Board Number	B66303

CATHOLIC SCHOOLS (ASSIGNED)

Your neighbourhood is part of a community of Catholic Schools offering Elementary, Middle, and High School programming. See the closest Catholic Schools near you below:

Father Fénelon Catholic School

2.22 KM away

Pre-Kindergarten, Kindergarten, Elementary and Middle

795 Eyer Dr, Pickering, ON L1W 2K2, Canada

At Father Fénelon Catholic School, we are called to celebrate and nurture the God-given talents of each student as we serve with excellence in the light of Christ. We recognize our call to love and serve from our Master teacher Jesus Christ, and we are committed to creating a Catholic learning community under the protection of Mother Mary. The Catholic Graduate Expectations are our foundation as we strive for academic excellence and the acknowledgement of those who achieve it. We recognize God as the source of all life and actively work to focus on social issues within our local and global communities.

<http://fatherfenelon.cdcsb.ca...>

Address	795 Eyer Dr, Pickering, ON L1W 2K2, Canada
Language	English
Date Opened	9/8/2015
Grade Level	Pre-Kindergarten, Kindergarten, Elementary and Middle
Orientation	Catholic
School Type	Public
Phone Number	905-839-5409
School Board	Durham CDSB
School Number	871140
Grades Offered	PK to 8
Additional Details	Religious
School Board Number	B67105

ÉÉC Notre-Dame-de-la-Jeunesse-Ajax

5.4 KM away

Pre-Kindergarten, Kindergarten and Elementary

71 Ritchie Ave, Ajax, ON L1S 6S5, Canada

Une école catholique de langue française qui accueille les élèves de la maternelle jusqu'à la sixième année.

<https://nddlja.cscmonavenir.ca...>

Address	71 Ritchie Ave, Ajax, ON L1S 6S5, Canada
Language	French
Grade Level	Pre-Kindergarten, Kindergarten and Elementary
Orientation	Catholic
School Type	Public
Phone Number	905-428-1460
School Board	CS catholique MonAvenir
School Number	738166
Grades Offered	PK to 6
Additional Details	Religious
School Board Number	B67318

St. Mary Catholic Secondary School

3.71 KM away

High

1918 Whites Road, Pickering, ON L1V 1R9, Canada

At St. Mary Catholic Secondary School, we are called to celebrate and nurture the God-given talents of each student as we serve with excellence in the light of Christ. We recognize our call to love and serve from our Master teacher Jesus Christ, and we are committed to creating a Catholic learning community under the protection of Mother Mary. The Catholic Graduate Expectations are our foundation as we strive for academic excellence and the acknowledgement of those who achieve it. We recognize God as the source of all life and actively work to focus on social issues within our local and global communities.

<http://stmary.cdcsb.ca...>

Address	1918 Whites Road, Pickering, ON L1V 1R9, Canada
Language	English
Date Opened	9/1/1987
Grade Level	High
Orientation	Catholic
School Type	Public
Phone Number	905-420-7166
School Board	Durham CDSB
School Number	826278
Grades Offered	9 to 12
Additional Details	Religious and French Immersion
School Board Number	B67105

ÉSC Saint-Charles-Garnier

14.92 KM away

High and Middle

4101 Baldwin St S, Whitby, ON L1R 2W6, Canada

L'ensemble du personnel est présent au quotidien pour accompagner votre enfant autant dans son parcours académique que culturel, pastoral ou sportif. Notre formation, notre expérience et notre savoir-faire font de nous des intervenants capables de guider votre enfant et de faire en sorte que chaque journée d'école soit une expérience enrichissante et diversifiée. Tous et chacun ont à cœur la réussite de chaque élève. C'est pourquoi nous espérons offrir un milieu scolaire des plus stimulants et dynamiques que possible. Nous sommes fiers des progrès de nos élèves en mathématiques et en français aux tests normalisés de l'OQRE; ceci est rendu possible grâce aux efforts d'une équipe d'enseignants dévoués. De plus, nous sommes la seule école de la région de Durham qui offre le Programme d'éducation intermédiaire (PÉI) du Baccalauréat International (IB).

<https://esscg.cscmonavenir.ca...>

Address	4101 Baldwin St S, Whitby, ON L1R 2W6, Canada
Language	French
Date Opened	9/1/1987
Grade Level	High and Middle
Orientation	Catholic
School Type	Public
Phone Number	905-655-5635
School Board	CS catholique MonAvenir
School Number	706477
Grades Offered	7 to 12
Additional Details	International Baccalaureate and Religious
School Board Number	B67318

CATHOLIC SCHOOLS (NEARBY)

Your neighbourhood is part of a community of Catholic Schools offering Elementary, Middle, and High School programming. See the closest Catholic Schools near you below:

St. John Paul II Catholic Secondary School

9.95 KM away

High

685 Military Trail, Scarborough, ON M1E 4P6, Canada

St. John Paul II Catholic Secondary School is dedicated to helping each student reach their full potential—spiritually, intellectually, physically, emotionally, socially, and morally. We foster a strong Christian community where every student feels a sense of belonging. Through active participation in school life, students are encouraged to live out the values of the Gospel. The school is uniquely designed in a circular layout surrounding a beautifully landscaped courtyard. At St. John Paul II Catholic Secondary School, we offer a full range of academic and support programs to support the diverse needs of our students.

<https://www.tcdsb.org...>

Address	685 Military Trail, Scarborough, ON M1E 4P6, Canada
Language	English
Grade Level	High
Orientation	Catholic
School Type	Public
Phone Number	416-393-5531
School Board	Toronto CDSB
School Number	751537
Grades Offered	9 to 12
Additional Details	Religious and International Baccalaureate
School Board Number	B67059

PRIVATE SCHOOLS

See a list of the closest private schools near you:

Montessori Learning Centre - Upper Elementary



about a 6 minute walk - 0.43 KM

PARKS & REC.

Whether you want to sit at a park bench with a good book or use one of the special facilities offered, you'll be happy to know that your neighbourhood is close to many wonderful recreational opportunities. See Parks and Recreation facilities near you below:



Frenchman's Bay Ratepayers Memorial Park



about a 1 minute walk - 0.05 KM

Commerce St, Pickering, ON, Canada

1 Sports Field, and 1 Basketball Court

<https://apps.pickering.ca...>



Balsdon Park



about a 5 minute walk - 0.35 KM

830 Naroch Blvd, Pickering, ON, L1W 1S9, Canada

1 Playground, and 1 Ball Diamond

<https://apps.pickering.ca...>



Progress Frenchman's Bay East Park



about a 6 minute walk - 0.42 KM

673 Front Rd, Pickering, ON, L1W 1N9, Canada

Progress Frenchman's Bay East Park offers canoe and kayak access, fishing docks, a gazebo, picnic tables, playground equipment, washrooms and tot equipment.

2 Playgrounds, 1 Boating Facilities, 1 Fishing, and 1 Picnic Facilities

<https://apps.pickering.ca...>



Douglas Park



about a 9 minute walk - 0.7 KM

864 Douglas Ave, Pickering, ON, L1W 1N5, Canada

1 Playground, and 1 Sports Field

<https://apps.pickering.ca...>

TRANSIT

The public transit system can be an easy, cost-effective and efficient way of getting around the city, accessible from your neighbourhood. See the closest Public Transit stops near you below:



The nearest rail transit stop is Pickering GO



about a 18 minute walk - 1.37 KM

<https://www.gotransit.com...>



The nearest street-level transit stop is Krosno Eastbound at Annland



about a 3 minute walk - 0.24 KM

<https://www.durhamregiontransit.com...>

SAFETY

Every second matters in an emergency, and your neighbourhood is part of a dedicated safety system of emergency agencies including Fire Stations, Police Stations, and Hospitals. See the closest facilities near you below:



Lakeridge Health - Ajax Pickering Hospital

Lakeridge Health is one of Ontario's largest community hospitals, serving people across Durham Region and beyond. Ajax Pickering Hospital is a full-service community hospital that provides safe quality care to residents who live in the communities of Ajax and Pickering. Services include Emergency and Critical Care, Women and Children's Health, Cardiac Care, Shoulder Centre, Diabetes Education, Outpatient Mental Health Services, Inpatient and Outpatient Surgery, Diagnostic Imaging and Laboratory Services.

5.66 KM away

Type	Chronic Care, General and Rehabilitation
Address	580 Harwood Ave S, Ajax, ON, L1S 2J4, Canada

<https://www.lakeridgehealth.on.ca...>



The nearest fire station is Pickering Fire Station #5 (Headquarters)

1.58 KM away

Address 1616 Bayly Street, Pickering, ON L1W

<http://www.pickering.ca...>

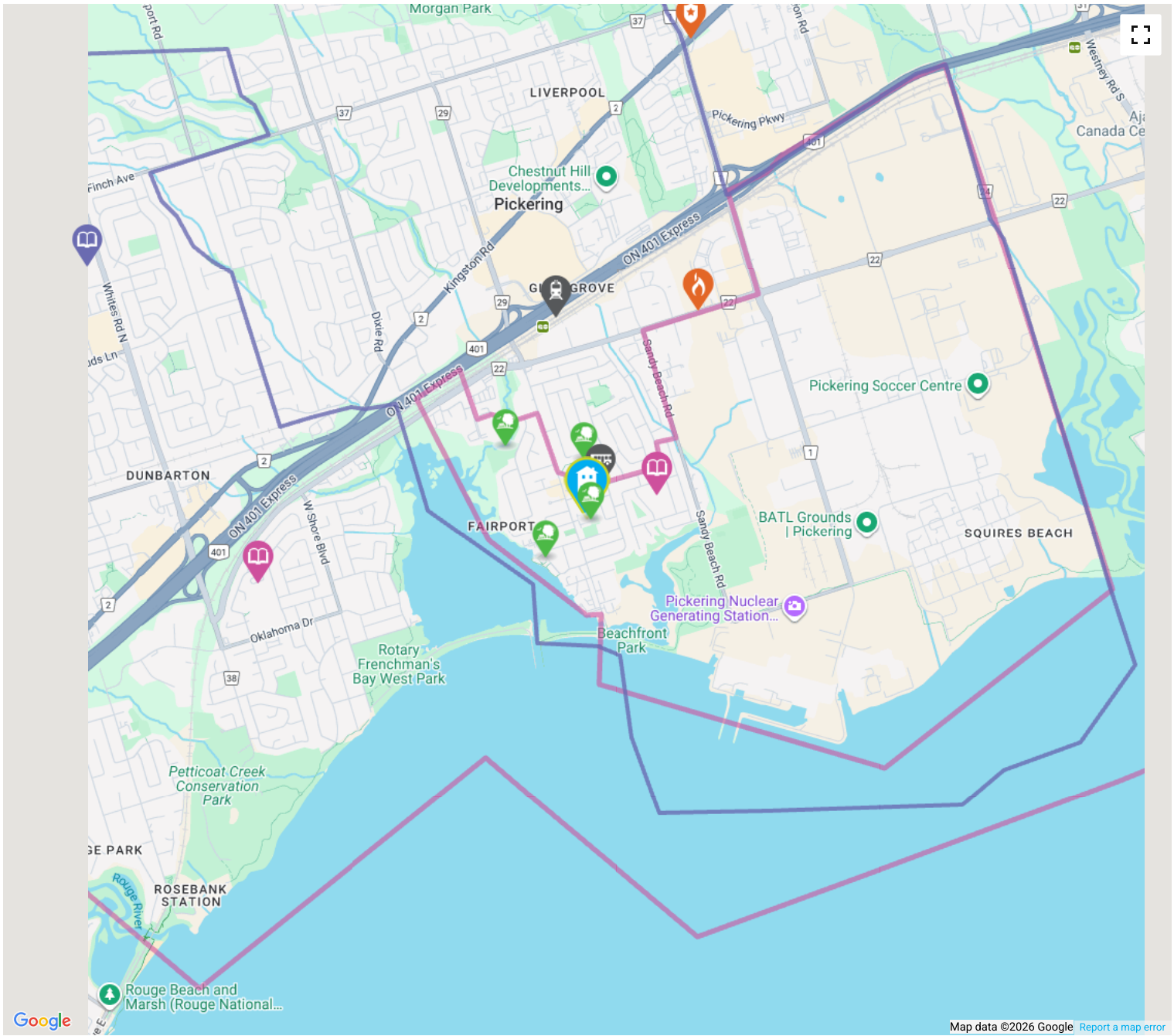


The nearest police facility is Durham Regional Police - West Division

3.31 KM away

Address 1710 Kingston Rd, Pickering, ON L1V

<http://www.drps.ca...>



Elementary Schools

Middle Schools

High Schools

Transit

Safety

Elementary
Attendance Zone

Middle Attendance
Zone

High Attendance
Zone

Parks

HoodQ

Disclaimer: These materials have been prepared for sj@sjphotography.co and are not intended to solicit buyers or sellers currently under contract with a brokerage. By accessing this information you have agreed to our terms of service, which are hereby incorporated by reference. This information may contain errors and omissions. You are not permitted to rely on the contents of this information and must take steps to independently verify its contents with the appropriate authorities (school boards, governments etc.). As a recipient of this information, you agree not to hold us, our licensors or the owners of the information liable for any damages, howsoever caused.