

# Home data report

## 11011 Stage Rd, Clarence, NY, US



**Total Area: 3423 sq. ft**

Basement: 1053 sq. ft, 1st Floor: 1238 sq. ft, 2nd Floor: 1132 sq. ft

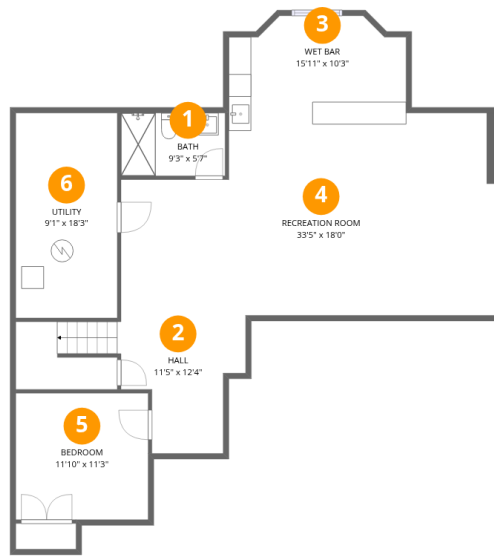
Excluded: Utility 165 sq. ft, Fireplace 9 sq. ft, Open to below 376 sq. ft, Walls: 267 sq. ft

### Property summary

 **3** Floors

 **4** Bedrooms

 **3** Bathrooms



## Room dimensions

Floor 1 Below grade

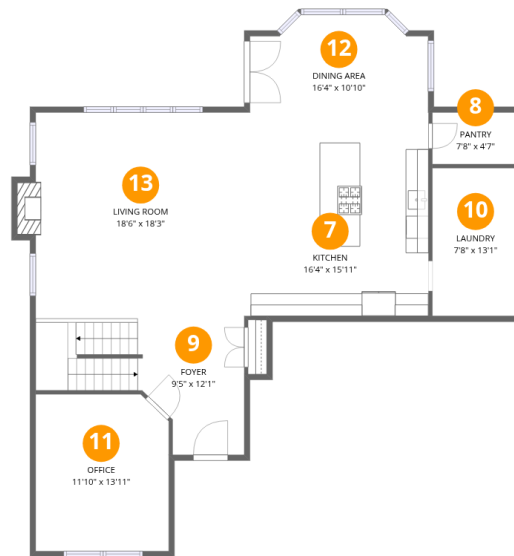
Total:1053sqft

Excluded: 165sqft

#		Dimensions	sqft	Counted as living area
1	Bath	9'3" x 5'7"	52 sq. ft	Yes
2	Hall	11'5" x 12'4"	123 sq. ft	Yes
3	Wet Bar	15'11" x 10'3"	150 sq. ft	Yes
4	Recreation Room	33'5" x 18'0"	521 sq. ft	Yes
5	Bedroom	11'10" x 11'3"	133 sq. ft	Yes
6	Utility	9'1" x 18'3"	165 sq. ft	No

# Home data report

## 11011 Stage Rd, Clarence, NY, US



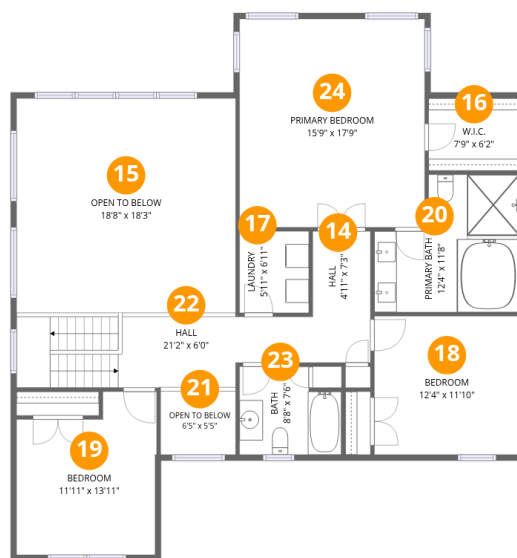
## Room dimensions

Floor 2

Total: 1238 sqft

Excluded: 9 sqft

#		Dimensions	sqft	Counted as living area
7	Kitchen	16'4" x 15'11"	259 sq. ft	Yes
8	Pantry	7'8" x 4'7"	35 sq. ft	Yes
9	Foyer	9'5" x 12'1"	157 sq. ft	Yes
10	Laundry	7'8" x 13'1"	101 sq. ft	Yes
11	Office	11'10" x 13'11"	161 sq. ft	Yes
12	Dining Area	16'4" x 10'10"	160 sq. ft	Yes
13	Living Room	18'6" x 18'3"	346 sq. ft	Yes



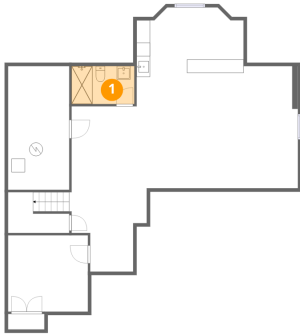
## Room dimensions

Floor 3

Total: 1132sqft Excluded: 376sqft

#		Dimensions	sqft	Counted as living area
14	Hall	4'11" x 7'3"	36 sq. ft	Yes
15	Open To Below	18'8" x 18'3"	341 sq. ft	No
16	W.I.C.	7'9" x 6'2"	48 sq. ft	Yes
17	Laundry	5'11" x 6'11"	41 sq. ft	Yes
18	Bedroom	12'4" x 11'10"	146 sq. ft	Yes
19	Bedroom	11'11" x 13'11"	147 sq. ft	Yes
20	Primary Bath	12'4" x 11'8"	122 sq. ft	Yes
21	Open To Below	6'5" x 5'5"	35 sq. ft	No
22	Hall	21'2" x 6'0"	166 sq. ft	Yes
23	Bath	8'8" x 7'6"	59 sq. ft	Yes
24	Primary Bedroom	15'9" x 17'9"	280 sq. ft	Yes

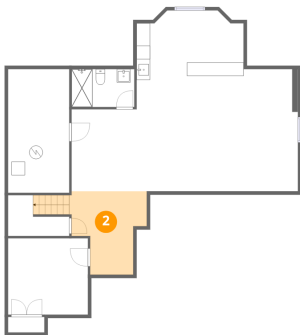
## 1 Floor 1 - Bath



Dimensions: 9'3" x 5'7"  
Area: 52 sq. ft  
Counted as living area: Yes

Heated: Yes  
Finished: Yes  
Enclosed: Yes  
Contiguous: Yes  
Permitted: Yes  
Wet space: Yes  
Addition: No  
Conversion: No

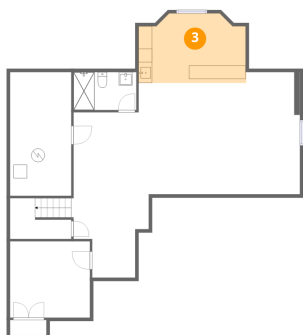
## 2 Floor 1 - Hall



Dimensions: 11'5" x 12'4"  
Area: 123 sq. ft  
Counted as living area: Yes

Heated: Yes  
Finished: Yes  
Enclosed: Yes  
Contiguous: Yes  
Permitted: Yes  
Wet space: No  
Addition: No  
Conversion: No

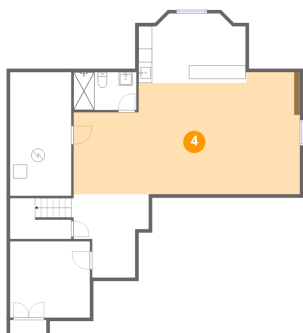
### 3 Floor 1 - Wet Bar



Dimensions: 15'11" x 10'3"  
Area: 150 sq. ft  
Counted as living area: Yes

Heated: Yes  
Finished: Yes  
Enclosed: Yes  
Contiguous: Yes  
Permitted: Yes  
Wet space: No  
Addition: No  
Conversion: No

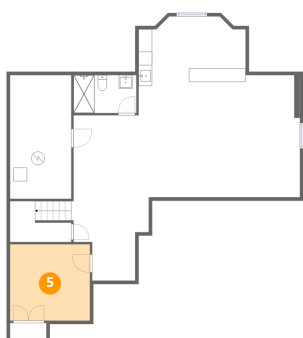
### 4 Floor 1 - Recreation Room



Dimensions: 33'5" x 18'0"  
Area: 521 sq. ft  
Counted as living area: Yes

Heated: Yes  
Finished: Yes  
Enclosed: Yes  
Contiguous: Yes  
Permitted: Yes  
Wet space: No  
Addition: No  
Conversion: No

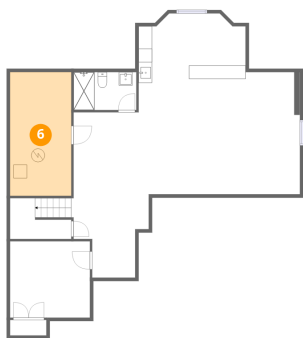
### 5 Floor 1 - Bedroom



Dimensions: 11'10" x 11'3"  
Area: 133 sq. ft  
Counted as living area: Yes

Heated: Yes  
Finished: Yes  
Enclosed: Yes  
Contiguous: Yes  
Permitted: Yes  
Wet space: No  
Addition: No  
Conversion: No

## 6 Floor 1 - Utility



Dimensions: 9'1" x 18'3"  
Area: 165 sq. ft  
Counted as living area: No

Heated: Yes  
Finished: No  
Enclosed: Yes  
Contiguous: Yes  
Permitted: Yes  
Wet space: No  
Addition: No  
Conversion: No

## 7 Floor 2 - Kitchen



Dimensions: 16'4" x 15'11"  
Area: 259 sq. ft  
Counted as living area: Yes

Heated: Yes  
Finished: Yes  
Enclosed: Yes  
Contiguous: Yes  
Permitted: Yes  
Wet space: No  
Addition: No  
Conversion: No

## 8 Floor 2 - Pantry



Dimensions: 7'8" x 4'7"  
Area: 35 sq. ft  
Counted as living area: Yes

Heated: Yes  
Finished: Yes  
Enclosed: Yes  
Contiguous: Yes  
Permitted: Yes  
Wet space: No  
Addition: No  
Conversion: No

## 9 Floor 2 - Foyer



Dimensions: 9'5" x 12'1"  
Area: 157 sq. ft  
Counted as living area: Yes

Heated: Yes  
Finished: Yes  
Enclosed: Yes  
Contiguous: Yes  
Permitted: Yes  
Wet space: No  
Addition: No  
Conversion: No

## 10 Floor 2 - Laundry



Dimensions: 7'8" x 13'1"  
Area: 101 sq. ft  
Counted as living area: Yes

Heated: Yes  
Finished: Yes  
Enclosed: Yes  
Contiguous: Yes  
Permitted: Yes  
Wet space: No  
Addition: No  
Conversion: No

## 11 Floor 2 - Office



Dimensions: 11'10" x 13'11"  
Area: 161 sq. ft  
Counted as living area: Yes

Heated: Yes  
Finished: Yes  
Enclosed: Yes  
Contiguous: Yes  
Permitted: Yes  
Wet space: No  
Addition: No  
Conversion: No

## 12 Floor 2 - Dining Area



Dimensions: 16'4" x 10'10"  
Area: 160 sq. ft  
Counted as living area: Yes

Heated: Yes  
Finished: Yes  
Enclosed: Yes  
Contiguous: Yes  
Permitted: Yes  
Wet space: No  
Addition: No  
Conversion: No

## 13 Floor 2 - Living Room



Dimensions: 18'6" x 18'3"  
Area: 346 sq. ft  
Counted as living area: Yes

Heated: Yes  
Finished: Yes  
Enclosed: Yes  
Contiguous: Yes  
Permitted: Yes  
Wet space: No  
Addition: No  
Conversion: No

## 14 Floor 3 - Hall



Dimensions: 4'11" x 7'3"  
Area: 36 sq. ft  
Counted as living area: Yes

Heated: Yes  
Finished: Yes  
Enclosed: Yes  
Contiguous: Yes  
Permitted: Yes  
Wet space: No  
Addition: No  
Conversion: No

**15** Floor 3 - Open To Below

---



Dimensions: 18'8" x 18'3"  
Area: 341 sq. ft  
Counted as living area: No

Heated: No  
Finished: No  
Enclosed: No  
Contiguous: Yes  
Permitted: No  
Wet space: No  
Addition: No  
Conversion: No

**16** Floor 3 - W.I.C.

---



Dimensions: 7'9" x 6'2"  
Area: 48 sq. ft  
Counted as living area: Yes

Heated: Yes  
Finished: Yes  
Enclosed: Yes  
Contiguous: Yes  
Permitted: Yes  
Wet space: No  
Addition: No  
Conversion: No

**17** Floor 3 - Laundry

---



Dimensions: 5'11" x 6'11"  
Area: 41 sq. ft  
Counted as living area: Yes

Heated: Yes  
Finished: Yes  
Enclosed: Yes  
Contiguous: Yes  
Permitted: Yes  
Wet space: No  
Addition: No  
Conversion: No

**18** Floor 3 - Bedroom



Dimensions: 12'4" x 11'10"  
Area: 146 sq. ft  
Counted as living area: Yes

Heated: Yes  
Finished: Yes  
Enclosed: Yes  
Contiguous: Yes  
Permitted: Yes  
Wet space: No  
Addition: No  
Conversion: No

**19** Floor 3 - Bedroom



Dimensions: 11'11" x 13'11"  
Area: 147 sq. ft  
Counted as living area: Yes

Heated: Yes  
Finished: Yes  
Enclosed: Yes  
Contiguous: Yes  
Permitted: Yes  
Wet space: No  
Addition: No  
Conversion: No

**20** Floor 3 - Primary Bath



Dimensions: 12'4" x 11'8"  
Area: 122 sq. ft  
Counted as living area: Yes

Heated: Yes  
Finished: Yes  
Enclosed: Yes  
Contiguous: Yes  
Permitted: Yes  
Wet space: Yes  
Addition: No  
Conversion: No

### 21 Floor 3 - Open To Below



Dimensions: 6'5" x 5'5"  
Area: 35 sq. ft  
Counted as living area: No

Heated: No  
Finished: No  
Enclosed: No  
Contiguous: Yes  
Permitted: No  
Wet space: No  
Addition: No  
Conversion: No

### 22 Floor 3 - Hall



Dimensions: 21'2" x 6'0"  
Area: 166 sq. ft  
Counted as living area: Yes

Heated: Yes  
Finished: Yes  
Enclosed: Yes  
Contiguous: Yes  
Permitted: Yes  
Wet space: No  
Addition: No  
Conversion: No

### 23 Floor 3 - Bath

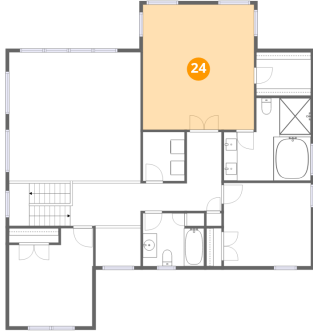


Dimensions: 8'8" x 7'6"  
Area: 59 sq. ft  
Counted as living area: Yes

Heated: Yes  
Finished: Yes  
Enclosed: Yes  
Contiguous: Yes  
Permitted: Yes  
Wet space: Yes  
Addition: No  
Conversion: No

**24** Floor 3 - Primary Bedroom

---



**Dimensions:** 15'9" x 17'9"  
**Area:** 280 sq. ft  
**Counted as living area:** Yes

**Heated:** Yes  
**Finished:** Yes  
**Enclosed:** Yes  
**Contiguous:** Yes  
**Permitted:** Yes  
**Wet space:** No  
**Addition:** No  
**Conversion:** No