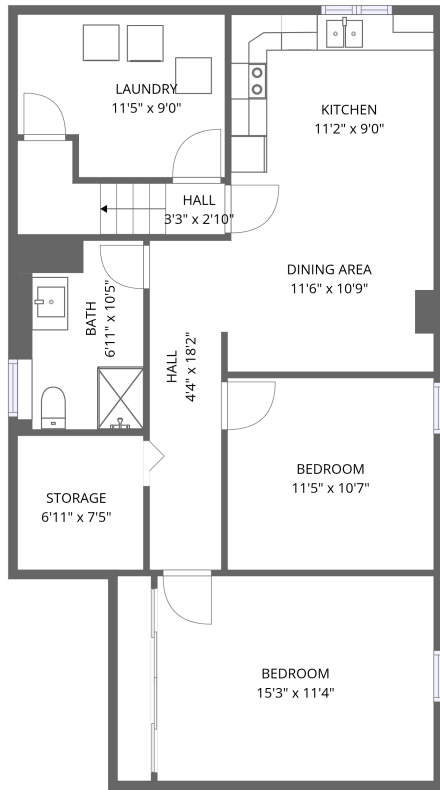
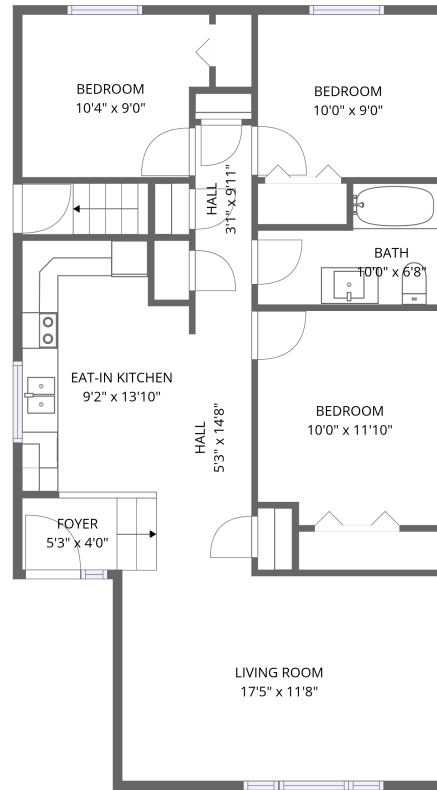


Home data report

265 Sunset Blvd, Peterborough, ON, CA



1st floor



2nd floor

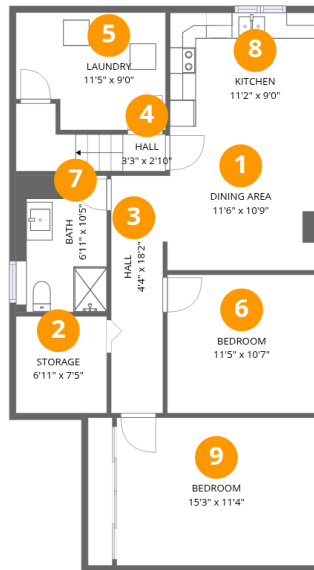
Total Area: 1761 sq. ft

1st Floor: 855 sq. ft, 2nd Floor: 906 sq. ft

Excluded: Storage 51 sq. ft, Walls: 134 sq. ft

Property summary



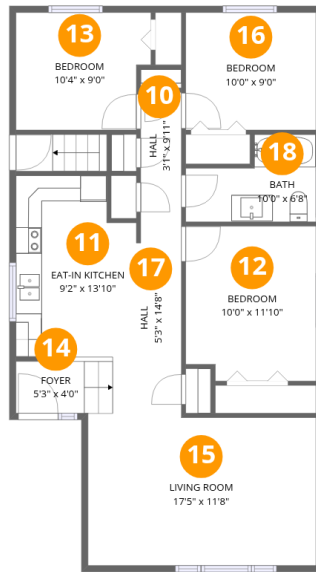


Room dimensions

Floor 1

Total: 855 sqft Excluded: 51 sqft

#		Dimensions	sqft	Counted as living area
1	Dining Area	11'6" x 10'9"	122 sq. ft	Yes
2	Storage	6'11" x 7'5"	51 sq. ft	No
3	Hall	4'4" x 18'2"	74 sq. ft	Yes
4	Hall	3'3" x 2'10"	19 sq. ft	Yes
5	Laundry	11'5" x 9'0"	95 sq. ft	Yes
6	Bedroom	11'5" x 10'7"	121 sq. ft	Yes
7	Bath	6'11" x 10'5"	72 sq. ft	Yes
8	Kitchen	11'2" x 9'0"	100 sq. ft	Yes
9	Bedroom	15'3" x 11'4"	173 sq. ft	Yes



Room dimensions

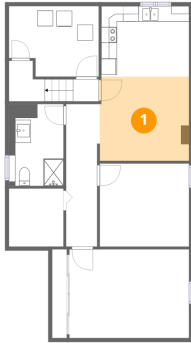
Floor 2

Total: 906 sqft

Excluded: 0 sqft

#		Dimensions	sqft	Counted as living area
10	Hall	3'1" x 9'11"	31 sq. ft	Yes
11	Eat-in Kitchen	9'2" x 13'10"	120 sq. ft	Yes
12	Bedroom	10'0" x 11'10"	115 sq. ft	Yes
13	Bedroom	10'4" x 9'0"	87 sq. ft	Yes
14	Foyer	5'3" x 4'0"	22 sq. ft	Yes
15	Living Room	17'5" x 11'8"	200 sq. ft	Yes
16	Bedroom	10'0" x 9'0"	90 sq. ft	Yes
17	Hall	5'3" x 14'8"	67 sq. ft	Yes
18	Bath	10'0" x 6'8"	53 sq. ft	Yes

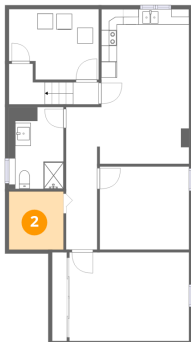
1 Floor 1 - Dining Area



Dimensions: 11'6" x 10'9"
Area: 122 sq. ft
Counted as living area: Yes

Heated: Yes
Finished: Yes
Enclosed: Yes
Contiguous: Yes
Permitted: Yes
Wet space: No
Addition: No
Conversion: No

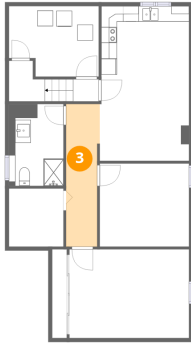
2 Floor 1 - Storage



Dimensions: 6'11" x 7'5"
Area: 51 sq. ft
Counted as living area: No

Heated: No
Finished: No
Enclosed: No
Contiguous: Yes
Permitted: Yes
Wet space: No
Addition: No
Conversion: No

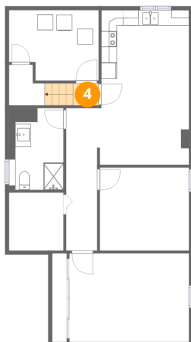
3 Floor 1 - Hall



Dimensions: 4'4" x 18'2"
Area: 74 sq. ft
Counted as living area: Yes

Heated: Yes
Finished: Yes
Enclosed: Yes
Contiguous: Yes
Permitted: Yes
Wet space: No
Addition: No
Conversion: No

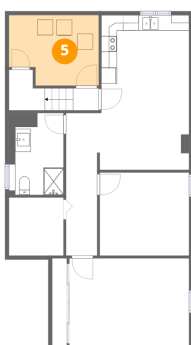
4 Floor 1 - Hall



Dimensions: 3'3" x 2'10"
Area: 19 sq. ft
Counted as living area: Yes

Heated: Yes
Finished: Yes
Enclosed: Yes
Contiguous: Yes
Permitted: Yes
Wet space: No
Addition: No
Conversion: No

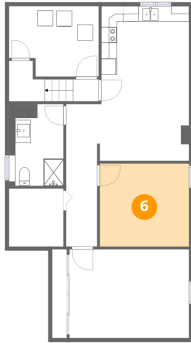
5 Floor 1 - Laundry



Dimensions: 11'5" x 9'0"
Area: 95 sq. ft
Counted as living area: Yes

Heated: Yes
Finished: Yes
Enclosed: Yes
Contiguous: Yes
Permitted: Yes
Wet space: No
Addition: No
Conversion: No

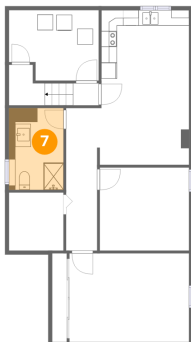
6 Floor 1 - Bedroom



Dimensions: 11'5" x 10'7"
Area: 121 sq. ft
Counted as living area: Yes

Heated: Yes
Finished: Yes
Enclosed: Yes
Contiguous: Yes
Permitted: Yes
Wet space: No
Addition: No
Conversion: No

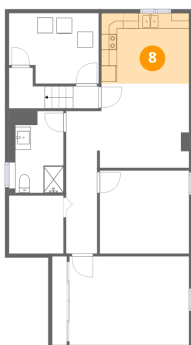
7 Floor 1 - Bath



Dimensions: 6'11" x 10'5"
Area: 72 sq. ft
Counted as living area: Yes

Heated: Yes
Finished: Yes
Enclosed: Yes
Contiguous: Yes
Permitted: Yes
Wet space: Yes
Addition: No
Conversion: No

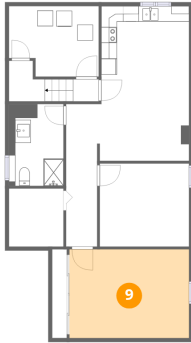
8 Floor 1 - Kitchen



Dimensions: 11'2" x 9'0"
Area: 100 sq. ft
Counted as living area: Yes

Heated: Yes
Finished: Yes
Enclosed: Yes
Contiguous: Yes
Permitted: Yes
Wet space: No
Addition: No
Conversion: No

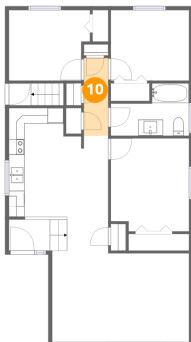
9 Floor 1 - Bedroom



Dimensions: 15'3" x 11'4"
Area: 173 sq. ft
Counted as living area: Yes

Heated: Yes
Finished: Yes
Enclosed: Yes
Contiguous: Yes
Permitted: Yes
Wet space: No
Addition: No
Conversion: No

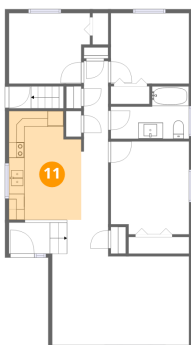
10 Floor 2 - Hall



Dimensions: 3'1" x 9'11"
Area: 31 sq. ft
Counted as living area: Yes

Heated: Yes
Finished: Yes
Enclosed: Yes
Contiguous: Yes
Permitted: Yes
Wet space: No
Addition: No
Conversion: No

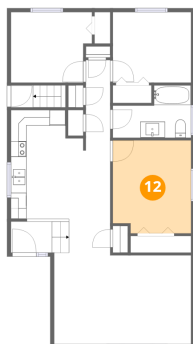
11 Floor 2 - Eat-in Kitchen



Dimensions: 9'2" x 13'10"
Area: 120 sq. ft
Counted as living area: Yes

Heated: Yes
Finished: Yes
Enclosed: Yes
Contiguous: Yes
Permitted: Yes
Wet space: No
Addition: No
Conversion: No

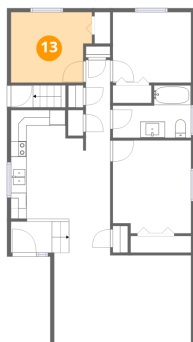
12 Floor 2 - Bedroom



Dimensions: 10'0" x 11'10"
Area: 115 sq. ft
Counted as living area: Yes

Heated: Yes
Finished: Yes
Enclosed: Yes
Contiguous: Yes
Permitted: Yes
Wet space: No
Addition: No
Conversion: No

13 Floor 2 - Bedroom



Dimensions: 10'4" x 9'0"
Area: 87 sq. ft
Counted as living area: Yes

Heated: Yes
Finished: Yes
Enclosed: Yes
Contiguous: Yes
Permitted: Yes
Wet space: No
Addition: No
Conversion: No

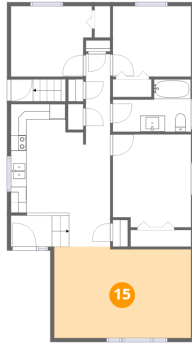
14 Floor 2 - Foyer



Dimensions: 5'3" x 4'0"
Area: 22 sq. ft
Counted as living area: Yes

Heated: Yes
Finished: Yes
Enclosed: Yes
Contiguous: Yes
Permitted: Yes
Wet space: No
Addition: No
Conversion: No

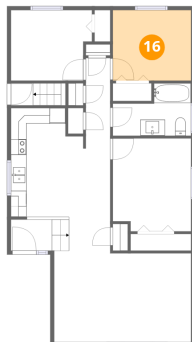
15 Floor 2 - Living Room



Dimensions: 17'5" x 11'8"
Area: 200 sq. ft
Counted as living area: Yes

Heated: Yes
Finished: Yes
Enclosed: Yes
Contiguous: Yes
Permitted: Yes
Wet space: No
Addition: No
Conversion: No

16 Floor 2 - Bedroom



Dimensions: 10'0" x 9'0"
Area: 90 sq. ft
Counted as living area: Yes

Heated: Yes
Finished: Yes
Enclosed: Yes
Contiguous: Yes
Permitted: Yes
Wet space: No
Addition: No
Conversion: No

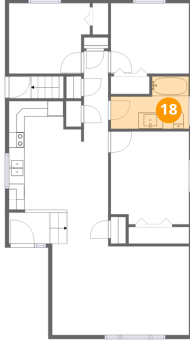
17 Floor 2 - Hall



Dimensions: 5'3" x 14'8"
Area: 67 sq. ft
Counted as living area: Yes

Heated: Yes
Finished: Yes
Enclosed: Yes
Contiguous: Yes
Permitted: Yes
Wet space: No
Addition: No
Conversion: No

18 Floor 2 - Bath



Dimensions: 10'0" x 6'8"
Area: 53 sq. ft
Counted as living area: Yes

Heated: Yes
Finished: Yes
Enclosed: Yes
Contiguous: Yes
Permitted: Yes
Wet space: Yes
Addition: No
Conversion: No