

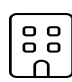
Home report

4 Ebb Road, Yarmouth Port, Barnstable County, Massachusetts,
United States, 02675



Total Area: 1382 sq. ft
Below Ground: 0 sq. ft, Floor 2: 1382 sq. ft
Excluded: Basement 714 sq. ft, Garage 250 sq. ft, Porch 106 sq. ft, Deck 144 sq. ft, Patio 69 sq. ft, Walls: 175 sq. ft

Property summary

 **2** Floors

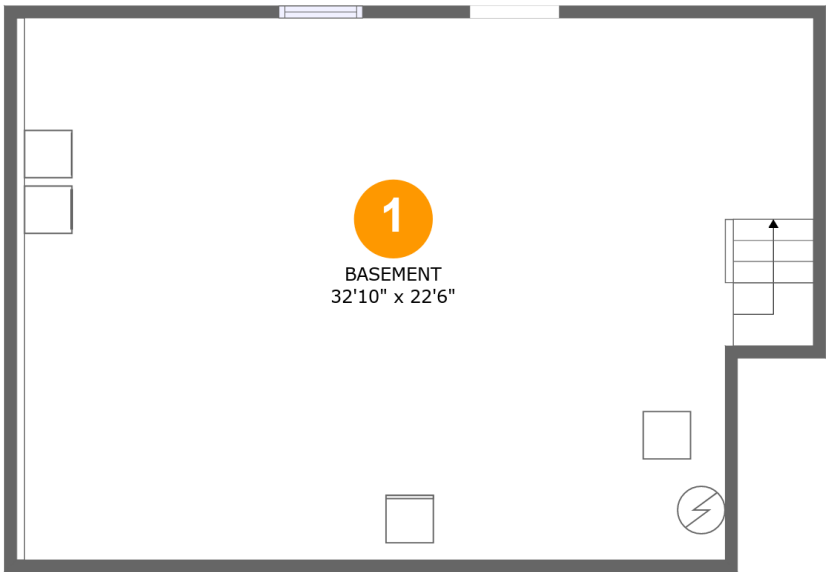
 **3** Bedrooms

 **2** Bathrooms

 **1** Garages

Home report

4 Ebb Road, Yarmouth Port, Barnstable County, Massachusetts,
United States, 02675



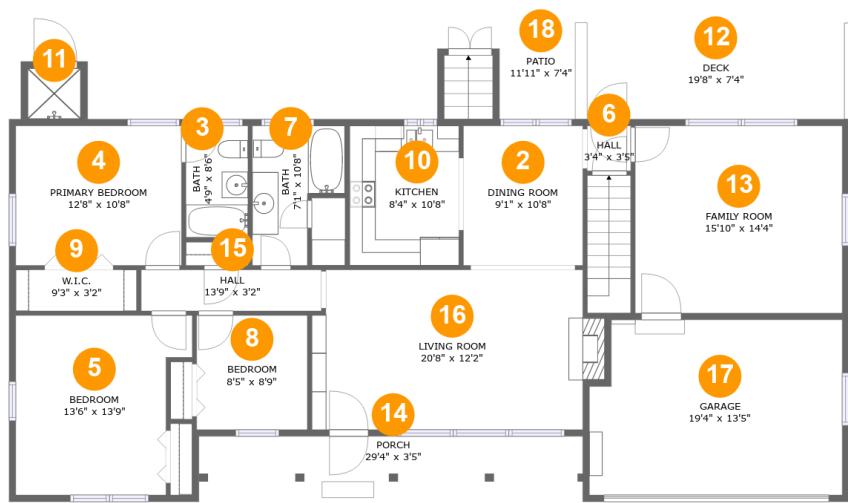
Room dimensions

Floor 1 Below ground Total:0sqft Excluded: 714sqft

#		Max Dimensions	sqft	Included
1	Basement	32'10" x 22'6"	714 sq. ft	No

Home report

4 Ebb Road, Yarmouth Port, Barnstable County, Massachusetts,
United States, 02675



Room dimensions

Floor 2 Total:1382sqft Excluded: 569sqft

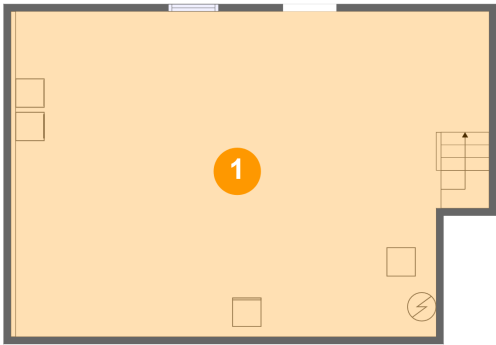
#		Max Dimensions	sqft	Included
2	Dining Room	9'1" x 10'8"	97 sq. ft	Yes
3	Bath	4'9" x 8'6"	40 sq. ft	Yes
4	Primary Bedroom	12'8" x 10'8"	135 sq. ft	Yes
5	Bedroom	13'6" x 13'9"	164 sq. ft	Yes
6	Hall	3'4" x 3'5"	11 sq. ft	Yes
7	Bath	7'1" x 10'8"	60 sq. ft	Yes
8	Bedroom	8'5" x 8'9"	74 sq. ft	Yes
9	W.I.C.	9'3" x 3'2"	29 sq. ft	Yes
10	Kitchen	8'4" x 10'8"	89 sq. ft	Yes
11	Shower	4'1" x 3'11"	16 sq. ft	No
12	Deck	19'8" x 7'4"	144 sq. ft	No

Home report

**4 Ebb Road, Yarmouth Port, Barnstable County, Massachusetts,
United States, 02675**

#		Max Dimensions	sqft	Included
13	Family Room	15'10" x 14'4"	226 sq. ft	Yes
14	Porch	29'4" x 3'5"	106 sq. ft	No
15	Hall	13'9" x 3'2"	43 sq. ft	Yes
16	Living Room	20'8" x 12'2"	257 sq. ft	Yes
17	Garage	19'4" x 13'5"	250 sq. ft	No
18	Patio	11'11" x 7'4"	69 sq. ft	No

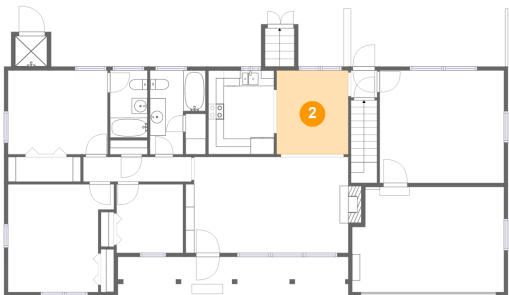
1 Floor 1 - Basement



Max Dimensions: 32'10" x 22'6"
Calculated Area: 714 sq. ft
Included: No

Heated: Yes
Finished: No
Enclosed: Yes
Contiguous: Yes
Permitted: Yes
Wet space: No
Addition: No
Conversion: No

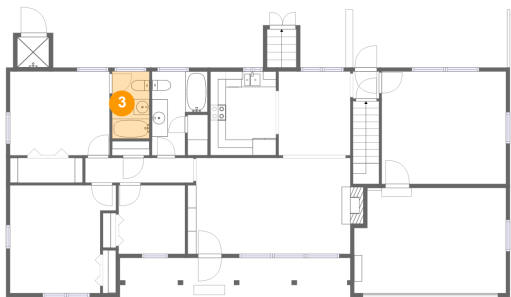
2 Floor 2 - Dining Room



Max Dimensions: 9'1" x 10'8"
Calculated Area: 97 sq. ft
Included: Yes

Heated: Yes
Finished: Yes
Enclosed: Yes
Contiguous: Yes
Permitted: Yes
Wet space: No
Addition: No
Conversion: No

3 Floor 2 - Bath



Max Dimensions: 4'9" x 8'6"
Calculated Area: 40 sq. ft
Included: Yes

Heated: Yes
Finished: Yes
Enclosed: Yes
Contiguous: Yes
Permitted: Yes
Wet space: Yes
Addition: No
Conversion: No

4 Floor 2 - Primary Bedroom



Max Dimensions: 12'8" x 10'8"
Calculated Area: 135 sq. ft
Included: Yes

Heated: Yes
Finished: Yes
Enclosed: Yes
Contiguous: Yes
Permitted: Yes
Wet space: No
Addition: No
Conversion: No

5 Floor 2 - Bedroom



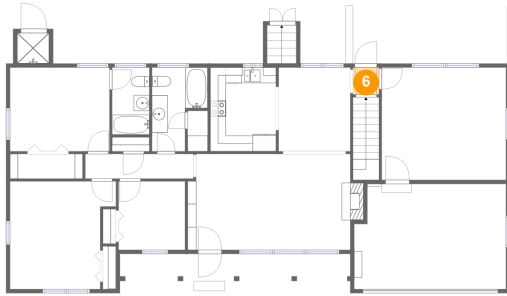
Max Dimensions: 13'6" x 13'9"
Calculated Area: 164 sq. ft
Included: Yes

Heated: Yes
Finished: Yes
Enclosed: Yes
Contiguous: Yes
Permitted: Yes
Wet space: No
Addition: No
Conversion: No

Home report

4 Ebb Road, Yarmouth Port, Barnstable County, Massachusetts,
United States, 02675

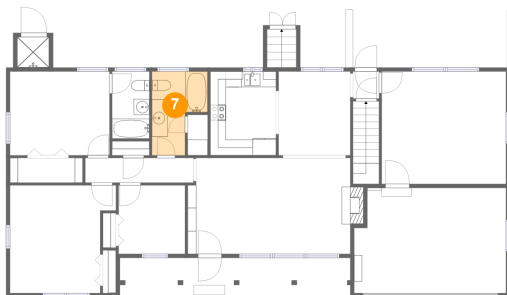
6 Floor 2 - Hall



Max Dimensions: 3'4" x 3'5"
Calculated Area: 11 sq. ft
Included: Yes

Heated: Yes
Finished: Yes
Enclosed: Yes
Contiguous: Yes
Permitted: Yes
Wet space: No
Addition: No
Conversion: No

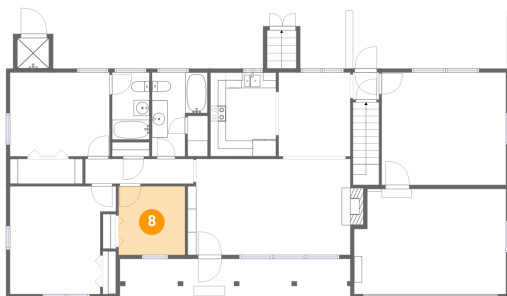
7 Floor 2 - Bath



Max Dimensions: 7'1" x 10'8"
Calculated Area: 60 sq. ft
Included: Yes

Heated: Yes
Finished: Yes
Enclosed: Yes
Contiguous: Yes
Permitted: Yes
Wet space: Yes
Addition: No
Conversion: No

8 Floor 2 - Bedroom



Max Dimensions: 8'5" x 8'9"
Calculated Area: 74 sq. ft
Included: Yes

Heated: Yes
Finished: Yes
Enclosed: Yes
Contiguous: Yes
Permitted: Yes
Wet space: No
Addition: No
Conversion: No

Home report

4 Ebb Road, Yarmouth Port, Barnstable County, Massachusetts,
United States, 02675

9 Floor 2 - W.I.C.



Max Dimensions: 9'3" x 3'2"
Calculated Area: 29 sq. ft
Included: Yes

Heated: Yes
Finished: Yes
Enclosed: Yes
Contiguous: Yes
Permitted: Yes
Wet space: No
Addition: No
Conversion: No

10 Floor 2 - Kitchen



Max Dimensions: 8'4" x
10'8"
Calculated Area: 89 sq. ft
Included: Yes

Heated: Yes
Finished: Yes
Enclosed: Yes
Contiguous:
Yes
Permitted: Yes
Wet space: No
Addition: No
Conversion: No

11 Floor 2 - Shower



Max Dimensions: 4'1" x
3'11"
Calculated Area: 16 sq. ft
Included: No

Heated: No
Finished: No
Enclosed: No
Contiguous:
Yes
Permitted: No
Wet space: No
Addition: No
Conversion: No

4 Ebb Road, Yarmouth Port, Barnstable County, Massachusetts,
United States, 02675

12 Floor 2 - Deck



Max Dimensions: 19'8" x 7'4"
Calculated Area: 144 sq. ft
Included: No

Heated: No
Finished: Yes
Enclosed: No
Contiguous: Yes
Permitted: Yes
Wet space: No
Addition: No
Conversion: No

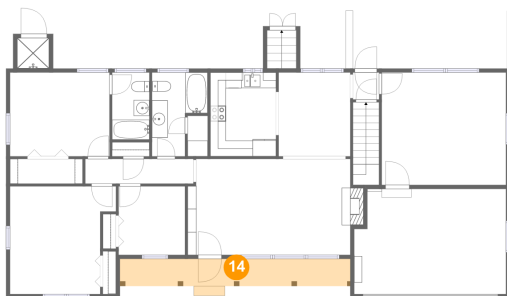
13 Floor 2 - Family Room



Max Dimensions: 15'10" x 14'4"
Calculated Area: 226 sq. ft
Included: Yes

Heated: Yes
Finished: Yes
Enclosed: Yes
Contiguous: Yes
Permitted: Yes
Wet space: No
Addition: No
Conversion: No

14 Floor 2 - Porch

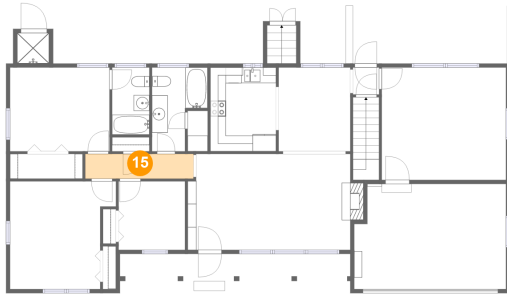


Max Dimensions: 29'4" x 3'5"
Calculated Area: 106 sq. ft
Included: No

Heated: No
Finished: Yes
Enclosed: No
Contiguous: Yes
Permitted: Yes
Wet space: No
Addition: No
Conversion: No

4 Ebb Road, Yarmouth Port, Barnstable County, Massachusetts,
United States, 02675

15 Floor 2 - Hall



Max Dimensions: 13'9" x 3'2"
Calculated Area: 43 sq. ft
Included: Yes

Heated: Yes
Finished: Yes
Enclosed: Yes
Contiguous: Yes
Permitted: Yes
Wet space: No
Addition: No
Conversion: No

16 Floor 2 - Living Room



Max Dimensions: 20'8" x 12'2"
Calculated Area: 257 sq. ft
Included: Yes

Heated: Yes
Finished: Yes
Enclosed: Yes
Contiguous: Yes
Permitted: Yes
Wet space: No
Addition: No
Conversion: No

17 Floor 2 - Garage

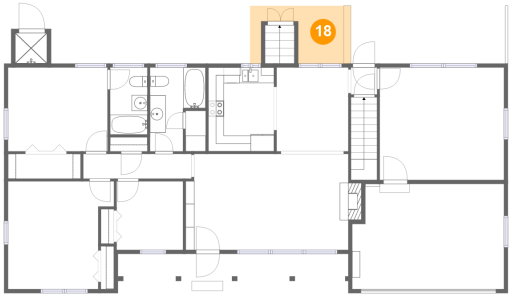


Max Dimensions: 19'4" x 13'5"
Calculated Area: 250 sq. ft
Included: No

Heated: No
Finished: No
Enclosed: Yes
Contiguous: Yes
Permitted: Yes
Wet space: No
Addition: No
Conversion: No

4 Ebb Road, Yarmouth Port, Barnstable County, Massachusetts,
United States, 02675

18 Floor 2 - Patio



Max Dimensions: 11'11" x 7'4"
Calculated Area: 69 sq. ft
Included: No

Heated: No
Finished: Yes
Enclosed: No
Contiguous: Yes
Permitted: Yes
Wet space: No
Addition: No
Conversion: No