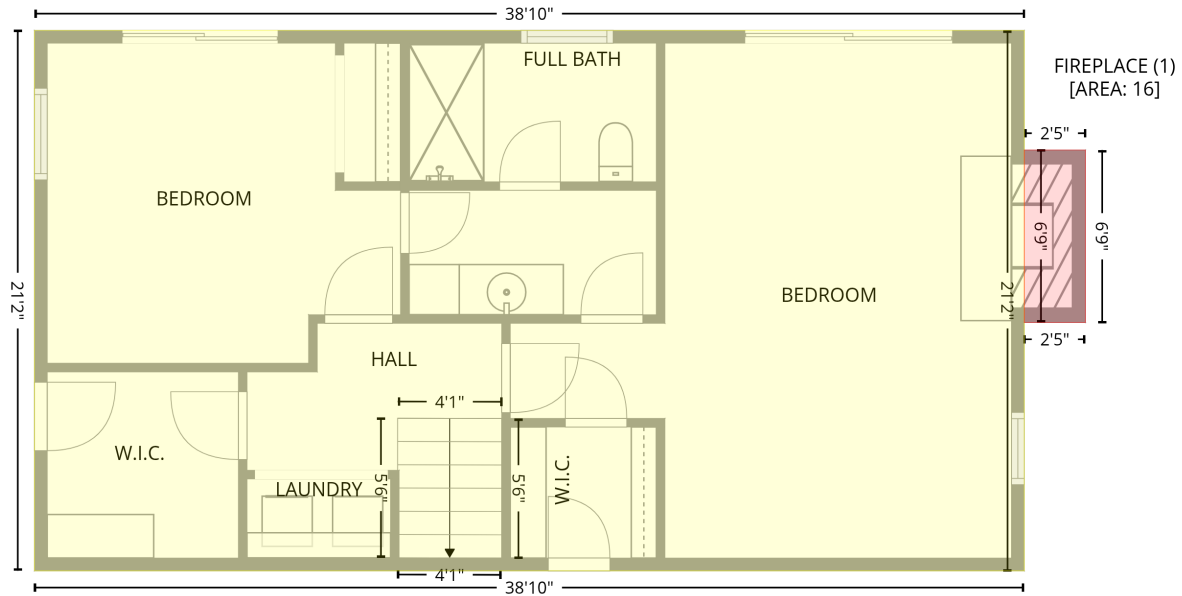


2862 Cherry Lane, Denver, Lincoln County, North Carolina, United States, 28037

Gross Living Area: 1326 sq. ft

Level 1 - Below Grade

Basement
[AREA: 824]



Space	Area (sq. ft)	Calculation <small>Coordinate Polygon Area Algorithm using inches</small>
Basement (Living area)	824	$-((483.5 + 483.5) * (129.4 - 383.9) + (483.5 + 17.2) * (383.9 - 383.9) + (17.2 + 17.2) * (383.9 - 129.4) + (17.2 + 483.5) * (129.4 - 129.4)) * 0.5 * 0.00694$
FIREPLACE (Non-living area)	16	$-((512.3 + 512.3) * (185.7 - 267) + (512.3 + 483.5) * (267 - 267) + (483.5 + 483.5) * (267 - 185.7) + (483.5 + 512.3) * (185.7 - 185.7)) * 0.5 * 0.00694$

2862 Cherry Lane, Denver, Lincoln County, North Carolina, United States, 28037

Gross Living Area: 1326 sq. ft

Level 2

1st floor
[AREA: 1326]



Space	Area (sq. ft)	Calculation <small>Coordinate Polygon Area Algorithm using inches</small>
1st floor (Living area)	1326	$-\left((483.5 + 483.5) * (129.4 - 532.3) + (483.5 + 298.3) * (532.3 - 532.3) + (298.3 + 298.3) * (532.3 - 517.3) + (298.3 + 190.9) * (517.3 - 517.3) + (190.9 + 190.9) * (517.3 - 532.3) + (190.9 + 5.4) * (532.3 - 532.3) + (5.4 + 5.4) * (532.3 - 129.4) + (5.4 + 483.5) * (129.4 - 129.4)\right) * 0.5 * 0.00694$
FIREPLACE (Non-living area)	16	$-\left((512.3 + 512.3) * (185.7 - 267.3) + (512.3 + 483.5) * (267.3 - 267.3) + (483.5 + 483.5) * (267.3 - 185.7) + (483.5 + 512.3) * (185.7 - 185.7)\right) * 0.5 * 0.00694$