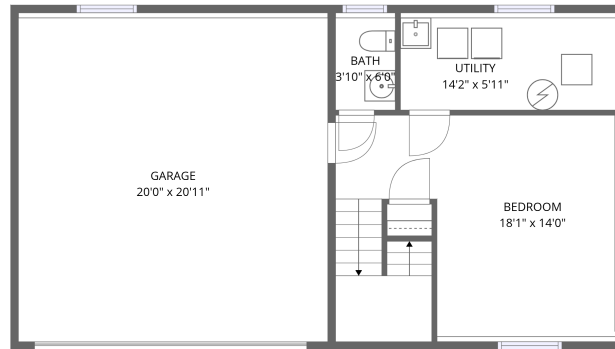
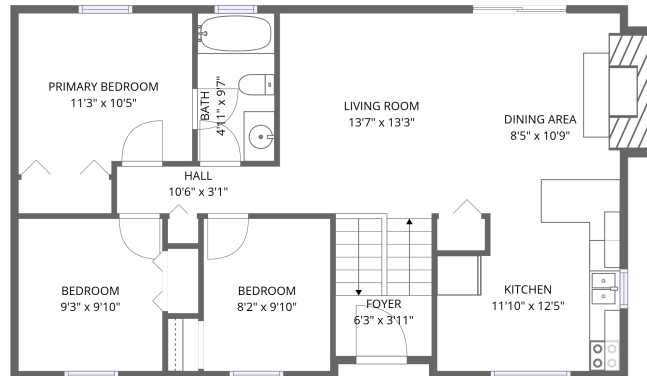


Home data report

796 Harry Paul Dr, Lake Orion, MI, US



Total Area: 1202 sq. ft

1st Floor: 302 sq. ft, 2nd Floor: 900 sq. ft

Excluded: Garage 426 sq. ft, Utility 89 sq. ft, Fireplace 17 sq. ft, Walls: 130 sq. ft

Property summary

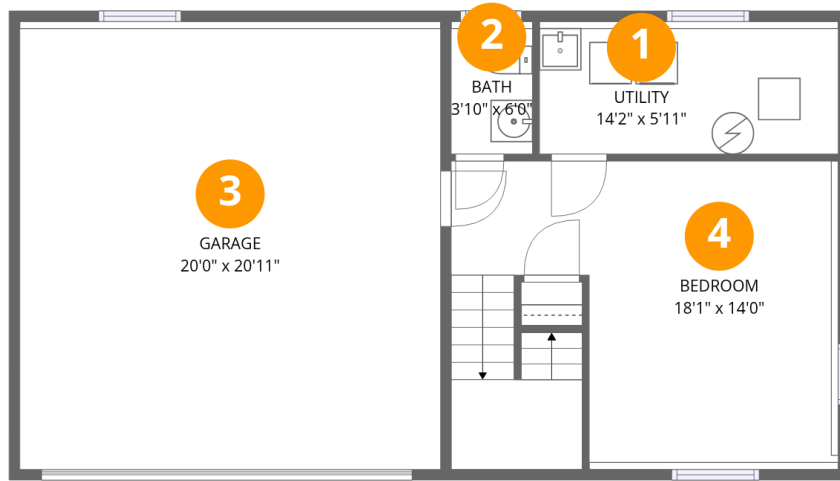


Home data report

796 Harry Paul Dr, Lake Orion, MI, US

 **1**
Half baths

 **1**
Garages



Room dimensions

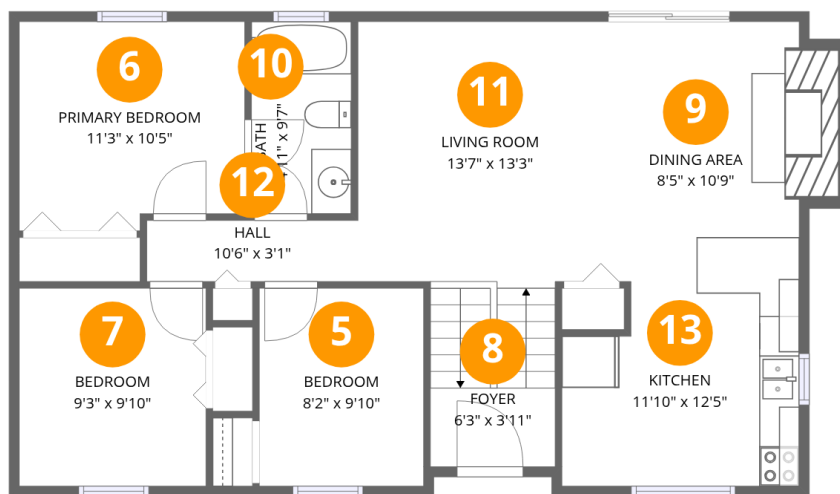
Floor 1

Total: 302 sqft

Excluded: 515 sqft

#		Dimensions	sqft	Counted as living area
1	Utility	14'2" x 5'11"	84 sq. ft	No
2	Bath	3'10" x 6'0"	23 sq. ft	Yes
3	Garage	20'0" x 20'11"	418 sq. ft	No
4	Bedroom	18'1" x 14'0"	253 sq. ft	Yes

796 Harry Paul Dr, Lake Orion, MI, US



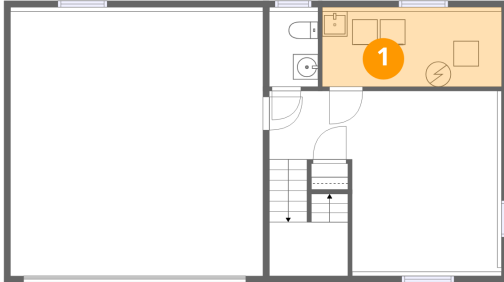
Room dimensions

Floor 2

Total: 900 sqft Excluded: 17 sqft

#		Dimensions	sqft	Counted as living area
5	Bedroom	8'2" x 9'10"	81 sq. ft	Yes
6	Primary Bedroom	11'3" x 10'5"	117 sq. ft	Yes
7	Bedroom	9'3" x 9'10"	91 sq. ft	Yes
8	Foyer	6'3" x 3'11"	24 sq. ft	Yes
9	Dining Area	8'5" x 10'9"	90 sq. ft	Yes
10	Bath	4'11" x 9'7"	47 sq. ft	Yes
11	Living Room	13'7" x 13'3"	181 sq. ft	Yes
12	Hall	10'6" x 3'1"	32 sq. ft	Yes
13	Kitchen	11'10" x 12'5"	147 sq. ft	Yes

1 Floor 1 - Utility



Dimensions: 14'2" x 5'11"
Area: 84 sq. ft
Counted as living area: No

Heated: Yes
Finished: No
Enclosed: Yes
Contiguous: Yes
Permitted: Yes
Wet space: No
Addition: No
Conversion: No

2 Floor 1 - Bath



Dimensions: 3'10" x 6'0"
Area: 23 sq. ft
Counted as living area: Yes

Heated: Yes
Finished: Yes
Enclosed: Yes
Contiguous: Yes
Permitted: Yes
Wet space: Yes
Addition: No
Conversion: No

3 Floor 1 - Garage



Dimensions: 20'0" x 20'11"

Area: 418 sq. ft

Counted as living area: No

Heated: No

Finished: No

Enclosed: Yes

Contiguous: Yes

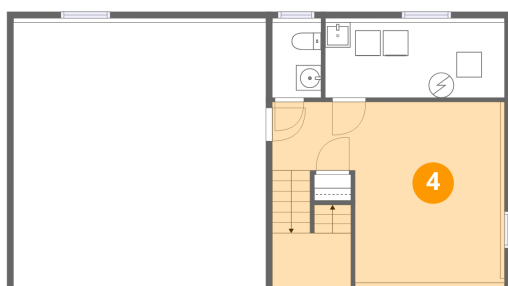
Permitted: Yes

Wet space: No

Addition: No

Conversion: No

4 Floor 1 - Bedroom



Dimensions: 18'1" x 14'0"

Area: 253 sq. ft

Counted as living area: Yes

Heated: Yes

Finished: Yes

Enclosed: Yes

Contiguous: Yes

Permitted: Yes

Wet space: No

Addition: No

Conversion: No

5 Floor 2 - Bedroom



Dimensions: 8'2" x 9'10"

Area: 81 sq. ft

Counted as living area: Yes

Heated: Yes

Finished: Yes

Enclosed: Yes

Contiguous: Yes

Permitted: Yes

Wet space: No

Addition: No

Conversion: No

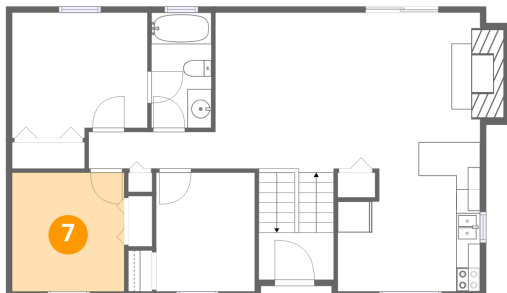
6 Floor 2 - Primary Bedroom



Dimensions: 11'3" x 10'5"
Area: 117 sq. ft
Counted as living area: Yes

Heated: Yes
Finished: Yes
Enclosed: Yes
Contiguous: Yes
Permitted: Yes
Wet space: No
Addition: No
Conversion: No

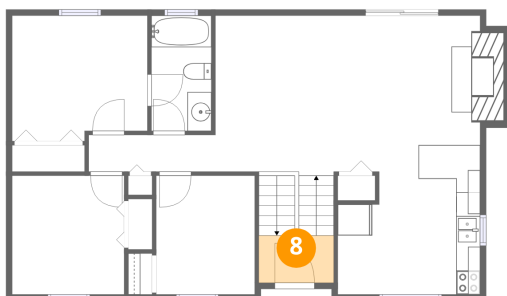
7 Floor 2 - Bedroom



Dimensions: 9'3" x 9'10"
Area: 91 sq. ft
Counted as living area: Yes

Heated: Yes
Finished: Yes
Enclosed: Yes
Contiguous: Yes
Permitted: Yes
Wet space: No
Addition: No
Conversion: No

8 Floor 2 - Foyer



Dimensions: 6'3" x 3'11"
Area: 24 sq. ft
Counted as living area: Yes

Heated: Yes
Finished: Yes
Enclosed: Yes
Contiguous: Yes
Permitted: Yes
Wet space: No
Addition: No
Conversion: No

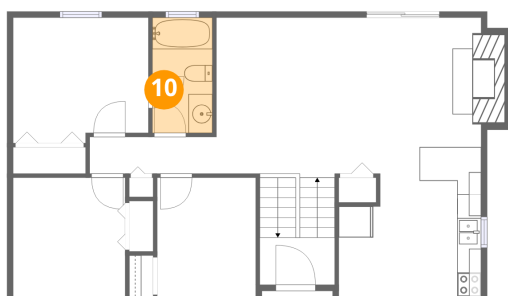
9 Floor 2 - Dining Area



Dimensions: 8'5" x 10'9"
Area: 90 sq. ft
Counted as living area: Yes

Heated: Yes
Finished: Yes
Enclosed: Yes
Contiguous: Yes
Permitted: Yes
Wet space: No
Addition: No
Conversion: No

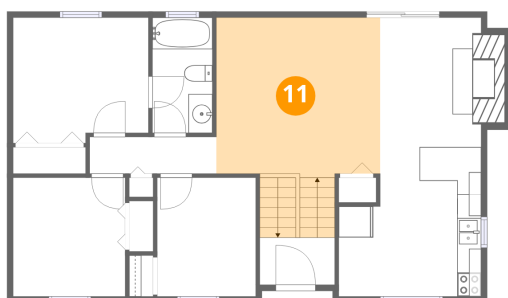
10 Floor 2 - Bath



Dimensions: 4'11" x 9'7"
Area: 47 sq. ft
Counted as living area: Yes

Heated: Yes
Finished: Yes
Enclosed: Yes
Contiguous: Yes
Permitted: Yes
Wet space: Yes
Addition: No
Conversion: No

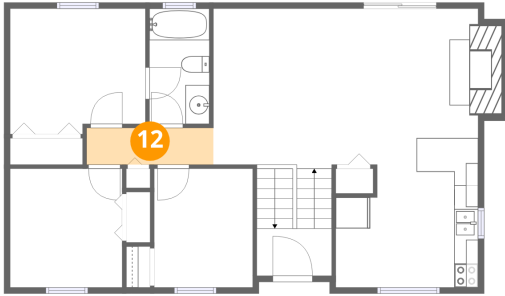
11 Floor 2 - Living Room



Dimensions: 13'7" x 13'3"
Area: 181 sq. ft
Counted as living area: Yes

Heated: Yes
Finished: Yes
Enclosed: Yes
Contiguous: Yes
Permitted: Yes
Wet space: No
Addition: No
Conversion: No

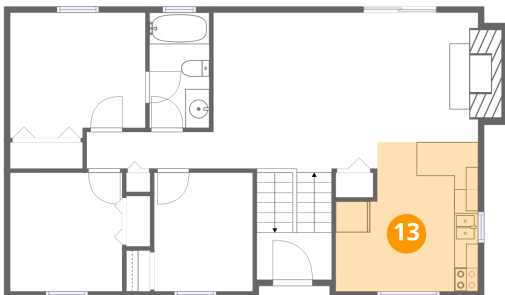
12 Floor 2 - Hall



Dimensions: 10'6" x 3'1"
Area: 32 sq. ft
Counted as living area: Yes

Heated: Yes
Finished: Yes
Enclosed: Yes
Contiguous: Yes
Permitted: Yes
Wet space: No
Addition: No
Conversion: No

13 Floor 2 - Kitchen



Dimensions: 11'10" x 12'5"
Area: 147 sq. ft
Counted as living area: Yes

Heated: Yes
Finished: Yes
Enclosed: Yes
Contiguous: Yes
Permitted: Yes
Wet space: No
Addition: No
Conversion: No