

## Home data report

# 67b Main Street, Round Hill, Loudoun County, Virginia, United States, 20141



**Total Area: 2350 sq. ft**

Basement: 573 sq. ft, 1st Floor: 786 sq. ft, 2nd Floor: 991 sq. ft

Excluded: Storage 121 sq. ft, Utility 26 sq. ft, Porch 136 sq. ft, Deck 131 sq. ft, Garage 407 sq. ft, Walls: 218 sq. ft

## Property summary



Home data report

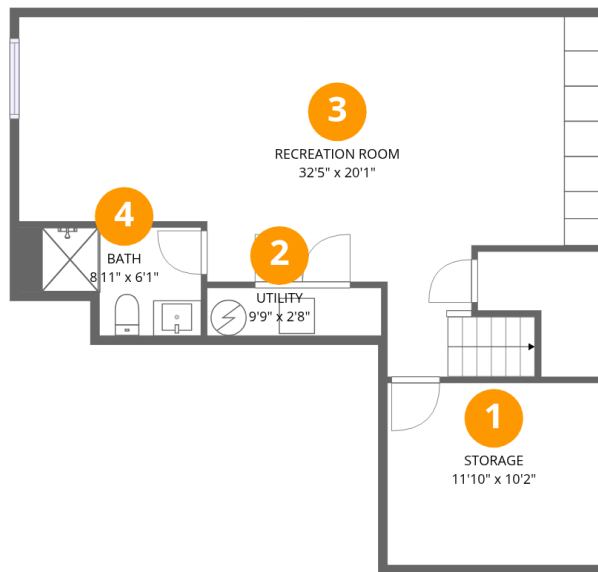
# 67b Main Street, Round Hill, Loudoun County, Virginia, United States, 20141

 **1**  
Half baths

 **1**  
Garages

Home data report

67b Main Street, Round Hill, Loudoun County, Virginia, United States, 20141



### Room dimensions

Floor 1 Below grade

Total:573sqft

Excluded: 147sqft

#		Dimensions	sqft	Counted as living area
1	Storage	11'10" x 10'2"	121 sq. ft	No
2	Utility	9'9" x 2'8"	26 sq. ft	No
3	Recreation Room	32'5" x 20'1"	651 sq. ft	Yes
4	Bath	8'11" x 6'1"	54 sq. ft	Yes

Home data report

67b Main Street, Round Hill, Loudoun County, Virginia, United States, 20141



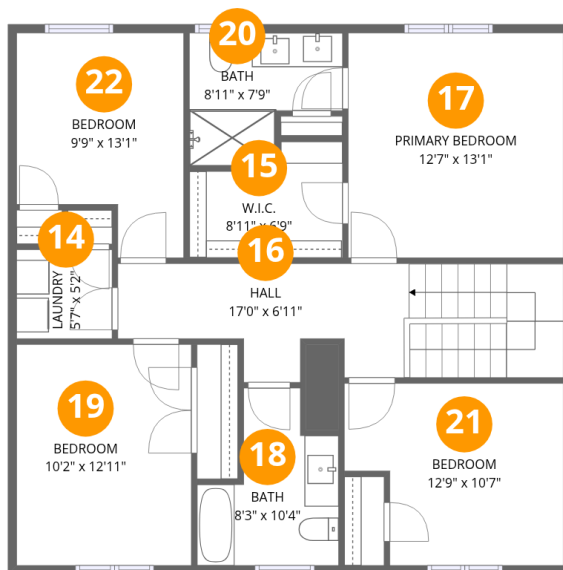
Room dimensions

Floor 2

Total:786sqft Excluded: 674sqft

#		Dimensions	sqft	Counted as living area
5	Living Room	11'10" x 20'6"	242 sq. ft	Yes
6	Garage	19'7" x 20'9"	406 sq. ft	No
7	Porch	12'4" x 11'1"	136 sq. ft	No
8	Hall	5'3" x 5'2"	27 sq. ft	Yes
9	Foyer	9'11" x 10'7"	105 sq. ft	Yes
10	Deck	14'4" x 9'1"	131 sq. ft	No
11	Kitchen	20'1" x 13'3"	267 sq. ft	Yes
12	Bath	5'1" x 5'5"	27 sq. ft	Yes
13	Dining Area	20'1" x 7'7"	153 sq. ft	Yes

67b Main Street, Round Hill, Loudoun County, Virginia, United States, 20141



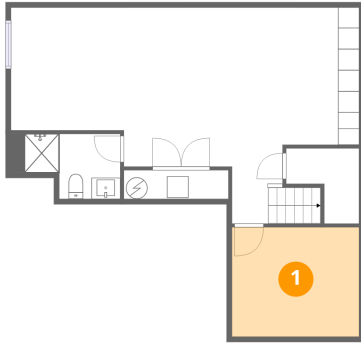
Room dimensions

Floor 3

Total:991sqft Excluded: 0sqft

#		Dimensions	sqft	Counted as living area
14	Laundry	5'7" x 5'2"	29 sq. ft	Yes
15	W.I.C.	8'11" x 6'9"	61 sq. ft	Yes
16	Hall	17'0" x 6'11"	118 sq. ft	Yes
17	Primary Bedroom	12'7" x 13'1"	165 sq. ft	Yes
18	Bath	8'3" x 10'4"	86 sq. ft	Yes
19	Bedroom	10'2" x 12'11"	132 sq. ft	Yes
20	Bath	8'11" x 7'9"	69 sq. ft	Yes
21	Bedroom	12'9" x 10'7"	136 sq. ft	Yes
22	Bedroom	9'9" x 13'1"	127 sq. ft	Yes

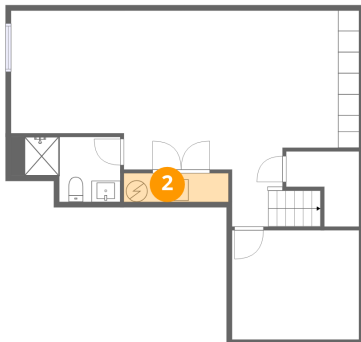
## 1 Floor 1 - Storage



Dimensions: 11'10" x 10'2"  
Area: 121 sq. ft  
Counted as living area: No

Heated: No  
Finished: No  
Enclosed: No  
Contiguous: Yes  
Permitted: Yes  
Wet space: No  
Addition: No  
Conversion: No

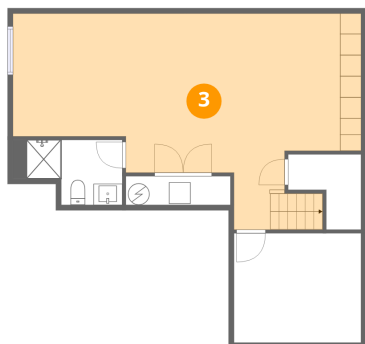
## 2 Floor 1 - Utility



Dimensions: 9'9" x 2'8"  
Area: 26 sq. ft  
Counted as living area: No

Heated: Yes  
Finished: No  
Enclosed: Yes  
Contiguous: Yes  
Permitted: Yes  
Wet space: No  
Addition: No  
Conversion: No

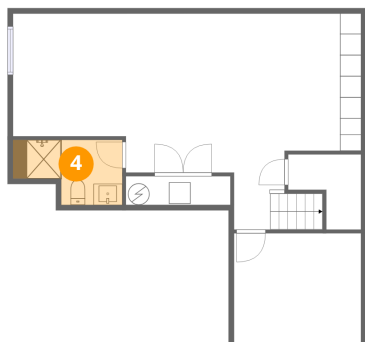
### 3 Floor 1 - Recreation Room



Dimensions: 32'5" x 20'1"  
Area: 651 sq. ft  
Counted as living area: Yes

Heated: Yes  
Finished: Yes  
Enclosed: Yes  
Contiguous: Yes  
Permitted: Yes  
Wet space: No  
Addition: No  
Conversion: No

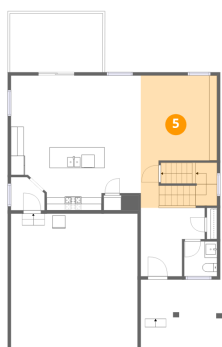
### 4 Floor 1 - Bath



Dimensions: 8'11" x 6'1"  
Area: 54 sq. ft  
Counted as living area: Yes

Heated: Yes  
Finished: Yes  
Enclosed: Yes  
Contiguous: Yes  
Permitted: Yes  
Wet space: Yes  
Addition: No  
Conversion: No

### 5 Floor 2 - Living Room

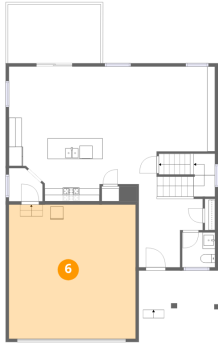


Dimensions: 11'10" x 20'6"  
Area: 242 sq. ft  
Counted as living area: Yes

Heated: Yes  
Finished: Yes  
Enclosed: Yes  
Contiguous: Yes  
Permitted: Yes  
Wet space: No  
Addition: No  
Conversion: No

67b Main Street, Round Hill, Loudoun County, Virginia, United States, 20141

**6** Floor 2 - Garage



Dimensions: 19'7" x 20'9"  
Area: 406 sq. ft  
Counted as living area: No

Heated: No  
Finished: No  
Enclosed: Yes  
Contiguous: Yes  
Permitted: Yes  
Wet space: No  
Addition: No  
Conversion: No

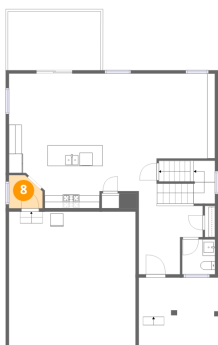
**7** Floor 2 - Porch



Dimensions: 12'4" x 11'1"  
Area: 136 sq. ft  
Counted as living area: No

Heated: No  
Finished: No  
Enclosed: No  
Contiguous: Yes  
Permitted: Yes  
Wet space: No  
Addition: No  
Conversion: No

**8** Floor 2 - Hall



Dimensions: 5'3" x 5'2"  
Area: 27 sq. ft  
Counted as living area: Yes

Heated: Yes  
Finished: Yes  
Enclosed: Yes  
Contiguous: Yes  
Permitted: Yes  
Wet space: No  
Addition: No  
Conversion: No

### 9 Floor 2 - Foyer



Dimensions: 9'11" x 10'7"  
Area: 105 sq. ft  
Counted as living area: Yes

Heated: Yes  
Finished: Yes  
Enclosed: Yes  
Contiguous: Yes  
Permitted: Yes  
Wet space: No  
Addition: No  
Conversion: No

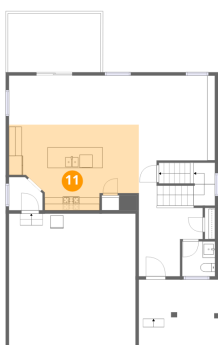
### 10 Floor 2 - Deck



Dimensions: 14'4" x 9'1"  
Area: 131 sq. ft  
Counted as living area: No

Heated: No  
Finished: No  
Enclosed: No  
Contiguous: Yes  
Permitted: Yes  
Wet space: No  
Addition: No  
Conversion: No

### 11 Floor 2 - Kitchen



Dimensions: 20'1" x 13'3"  
Area: 267 sq. ft  
Counted as living area: Yes

Heated: Yes  
Finished: Yes  
Enclosed: Yes  
Contiguous: Yes  
Permitted: Yes  
Wet space: No  
Addition: No  
Conversion: No

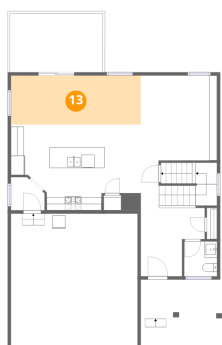
**12** Floor 2 - Bath



Dimensions: 5'1" x 5'5"  
Area: 27 sq. ft  
Counted as living area: Yes

Heated: Yes  
Finished: Yes  
Enclosed: Yes  
Contiguous: Yes  
Permitted: Yes  
Wet space: Yes  
Addition: No  
Conversion: No

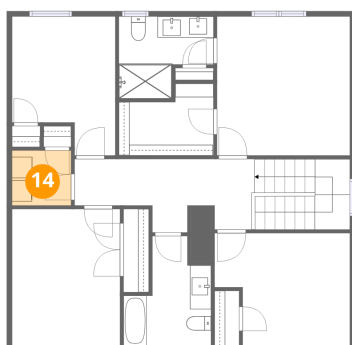
**13** Floor 2 - Dining Area



Dimensions: 20'1" x 7'7"  
Area: 153 sq. ft  
Counted as living area: Yes

Heated: Yes  
Finished: Yes  
Enclosed: Yes  
Contiguous: Yes  
Permitted: Yes  
Wet space: No  
Addition: No  
Conversion: No

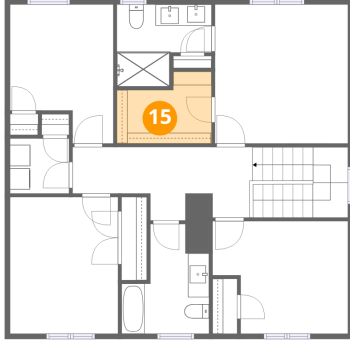
**14** Floor 3 - Laundry



Dimensions: 5'7" x 5'2"  
Area: 29 sq. ft  
Counted as living area: Yes

Heated: Yes  
Finished: Yes  
Enclosed: Yes  
Contiguous: Yes  
Permitted: Yes  
Wet space: No  
Addition: No  
Conversion: No

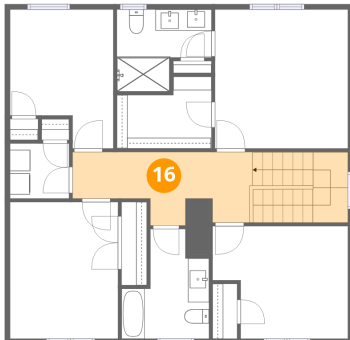
**15** Floor 3 - W.I.C.



Dimensions: 8'11" x 6'9"  
Area: 61 sq. ft  
Counted as living area: Yes

Heated: Yes  
Finished: Yes  
Enclosed: Yes  
Contiguous: Yes  
Permitted: Yes  
Wet space: No  
Addition: No  
Conversion: No

**16** Floor 3 - Hall



Dimensions: 17'0" x 6'11"  
Area: 118 sq. ft  
Counted as living area: Yes

Heated: Yes  
Finished: Yes  
Enclosed: Yes  
Contiguous: Yes  
Permitted: Yes  
Wet space: No  
Addition: No  
Conversion: No

**17** Floor 3 - Primary Bedroom



Dimensions: 12'7" x 13'1"  
Area: 165 sq. ft  
Counted as living area: Yes

Heated: Yes  
Finished: Yes  
Enclosed: Yes  
Contiguous: Yes  
Permitted: Yes  
Wet space: No  
Addition: No  
Conversion: No

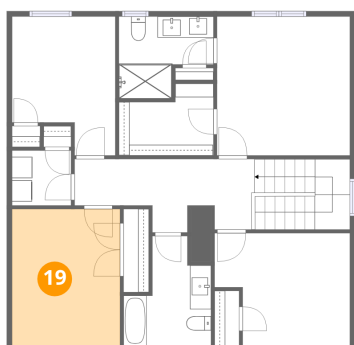
**18** Floor 3 - Bath



Dimensions: 8'3" x 10'4"  
Area: 86 sq. ft  
Counted as living area: Yes

Heated: Yes  
Finished: Yes  
Enclosed: Yes  
Contiguous: Yes  
Permitted: Yes  
Wet space: Yes  
Addition: No  
Conversion: No

**19** Floor 3 - Bedroom



Dimensions: 10'2" x 12'11"  
Area: 132 sq. ft  
Counted as living area: Yes

Heated: Yes  
Finished: Yes  
Enclosed: Yes  
Contiguous: Yes  
Permitted: Yes  
Wet space: No  
Addition: No  
Conversion: No

**20** Floor 3 - Bath

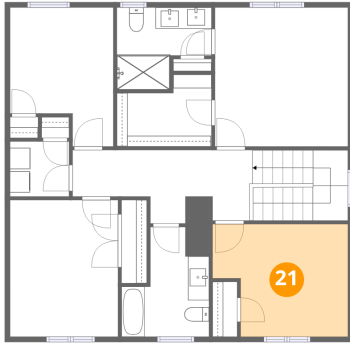


Dimensions: 8'11" x 7'9"  
Area: 69 sq. ft  
Counted as living area: Yes

Heated: Yes  
Finished: Yes  
Enclosed: Yes  
Contiguous: Yes  
Permitted: Yes  
Wet space: Yes  
Addition: No  
Conversion: No

67b Main Street, Round Hill, Loudoun County, Virginia, United States, 20141

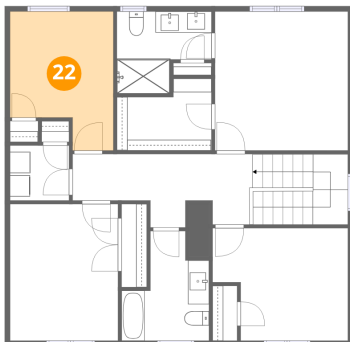
**21** Floor 3 - Bedroom



Dimensions: 12'9" x 10'7"  
Area: 136 sq. ft  
Counted as living area: Yes

Heated: Yes  
Finished: Yes  
Enclosed: Yes  
Contiguous: Yes  
Permitted: Yes  
Wet space: No  
Addition: No  
Conversion: No

**22** Floor 3 - Bedroom



Dimensions: 9'9" x 13'1"  
Area: 127 sq. ft  
Counted as living area: Yes

Heated: Yes  
Finished: Yes  
Enclosed: Yes  
Contiguous: Yes  
Permitted: Yes  
Wet space: No  
Addition: No  
Conversion: No