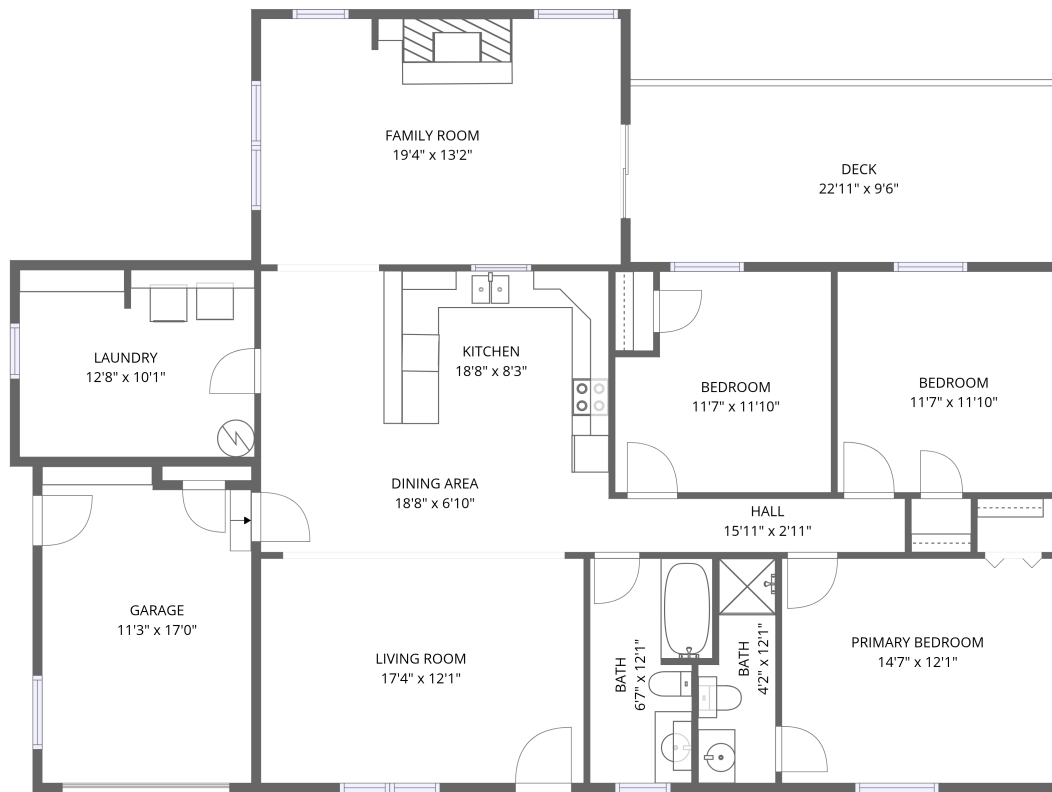


Home data report

# 15 River Lakes Dr, Strasburg, VA, US



1st floor

**Total Area: 1567 sq. ft**

1st Floor: 1567 sq. ft

Excluded: Garage 185 sq. ft, Deck 217 sq. ft, Walls: 115 sq. ft

## Property summary

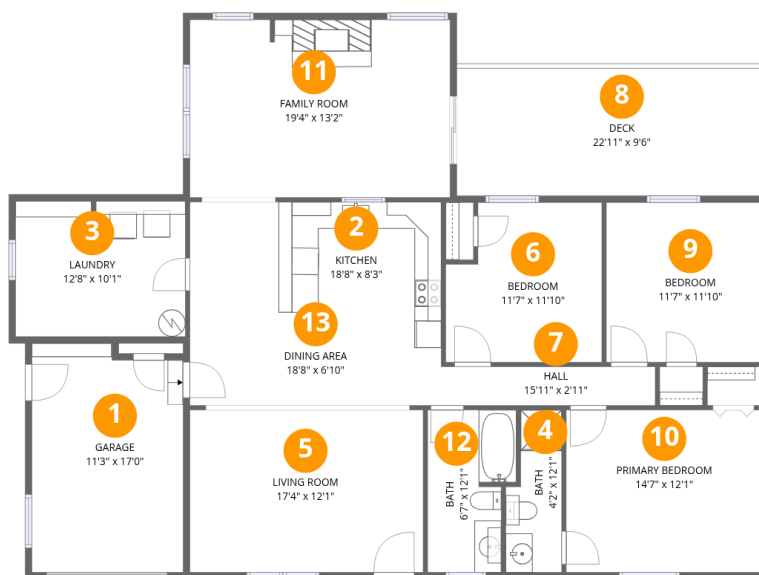
 **1** Floors

 **3** Bedrooms

 **2** Bathrooms

 **1** Garages

# 15 River Lakes Dr, Strasburg, VA, US



## Room dimensions

Floor 1

Total: 1567 sqft Excluded: 402 sqft

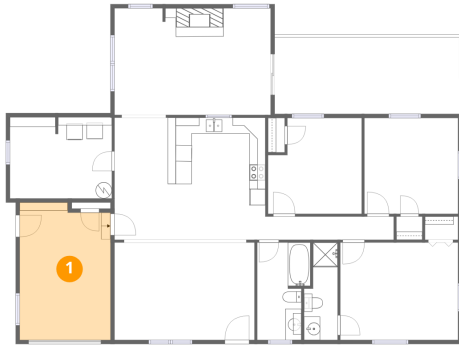
#		Dimensions	sqft	Counted as living area
1	Garage	11'3" x 17'0"	191 sq. ft	No
2	Kitchen	18'8" x 8'3"	155 sq. ft	Yes
3	Laundry	12'8" x 10'1"	127 sq. ft	Yes
4	Bath	4'2" x 12'1"	50 sq. ft	Yes
5	Living Room	17'4" x 12'1"	209 sq. ft	Yes
6	Bedroom	11'7" x 11'10"	138 sq. ft	Yes
7	Hall	15'11" x 2'11"	46 sq. ft	Yes
8	Deck	22'11" x 9'6"	217 sq. ft	No
9	Bedroom	11'7" x 11'10"	138 sq. ft	Yes
10	Primary Bedroom	14'7" x 12'1"	176 sq. ft	Yes
11	Family Room	19'4" x 13'2"	255 sq. ft	Yes

Home data report

## 15 River Lakes Dr, Strasburg, VA, US

#		Dimensions	sqft	Counted as living area
12	Bath	6'7" x 12'1"	80 sq. ft	Yes
13	Dining Area	18'8" x 6'10"	128 sq. ft	Yes

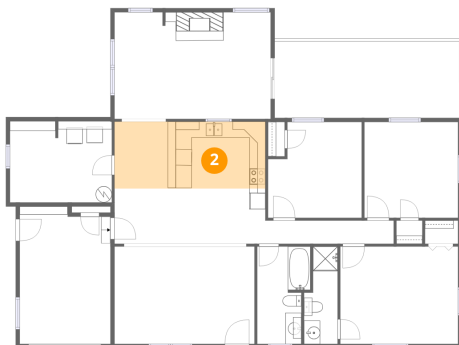
## 1 Floor 1 - Garage



Dimensions: 11'3" x 17'0"  
Area: 191 sq. ft  
Counted as living area: No

Heated: No  
Finished: No  
Enclosed: Yes  
Contiguous: Yes  
Permitted: Yes  
Wet space: No  
Addition: No  
Conversion: No

## 2 Floor 1 - Kitchen



Dimensions: 18'8" x 8'3"  
Area: 155 sq. ft  
Counted as living area: Yes

Heated: Yes  
Finished: Yes  
Enclosed: Yes  
Contiguous: Yes  
Permitted: Yes  
Wet space: No  
Addition: No  
Conversion: No

### 3 Floor 1 - Laundry



Dimensions: 12'8" x 10'1"  
Area: 127 sq. ft  
Counted as living area: Yes

Heated: Yes  
Finished: Yes  
Enclosed: Yes  
Contiguous: Yes  
Permitted: Yes  
Wet space: No  
Addition: No  
Conversion: No

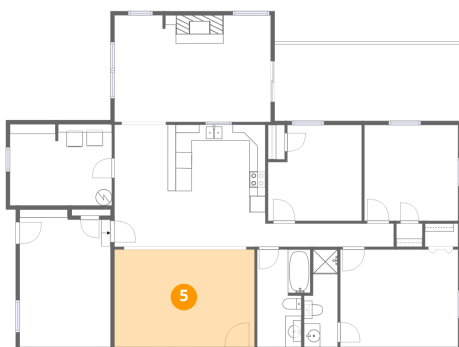
### 4 Floor 1 - Bath



Dimensions: 4'2" x 12'1"  
Area: 50 sq. ft  
Counted as living area: Yes

Heated: Yes  
Finished: Yes  
Enclosed: Yes  
Contiguous: Yes  
Permitted: Yes  
Wet space: Yes  
Addition: No  
Conversion: No

### 5 Floor 1 - Living Room



Dimensions: 17'4" x 12'1"  
Area: 209 sq. ft  
Counted as living area: Yes

Heated: Yes  
Finished: Yes  
Enclosed: Yes  
Contiguous: Yes  
Permitted: Yes  
Wet space: No  
Addition: No  
Conversion: No

## 6 Floor 1 - Bedroom



Dimensions: 11'7" x 11'10"  
Area: 138 sq. ft  
Counted as living area: Yes

Heated: Yes  
Finished: Yes  
Enclosed: Yes  
Contiguous: Yes  
Permitted: Yes  
Wet space: No  
Addition: No  
Conversion: No

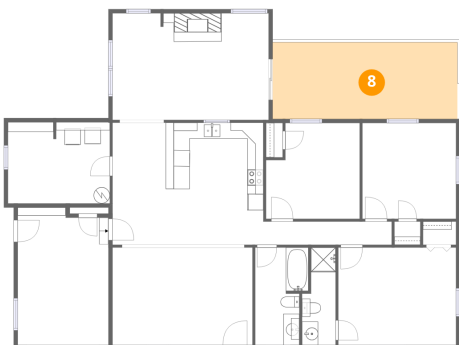
## 7 Floor 1 - Hall



Dimensions: 15'11" x 2'11"  
Area: 46 sq. ft  
Counted as living area: Yes

Heated: Yes  
Finished: Yes  
Enclosed: Yes  
Contiguous: Yes  
Permitted: Yes  
Wet space: No  
Addition: No  
Conversion: No

## 8 Floor 1 - Deck



Dimensions: 22'11" x 9'6"  
Area: 217 sq. ft  
Counted as living area: No

Heated: No  
Finished: No  
Enclosed: No  
Contiguous: Yes  
Permitted: Yes  
Wet space: No  
Addition: No  
Conversion: No

### 9 Floor 1 - Bedroom



Dimensions: 11'7" x 11'10"  
Area: 138 sq. ft  
Counted as living area: Yes

Heated: Yes  
Finished: Yes  
Enclosed: Yes  
Contiguous: Yes  
Permitted: Yes  
Wet space: No  
Addition: No  
Conversion: No

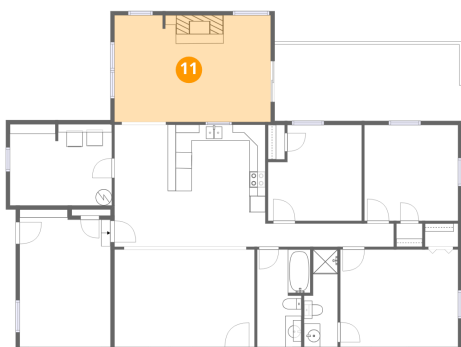
### 10 Floor 1 - Primary Bedroom



Dimensions: 14'7" x 12'1"  
Area: 176 sq. ft  
Counted as living area: Yes

Heated: Yes  
Finished: Yes  
Enclosed: Yes  
Contiguous: Yes  
Permitted: Yes  
Wet space: No  
Addition: No  
Conversion: No

### 11 Floor 1 - Family Room



Dimensions: 19'4" x 13'2"  
Area: 255 sq. ft  
Counted as living area: Yes

Heated: Yes  
Finished: Yes  
Enclosed: Yes  
Contiguous: Yes  
Permitted: Yes  
Wet space: No  
Addition: No  
Conversion: No

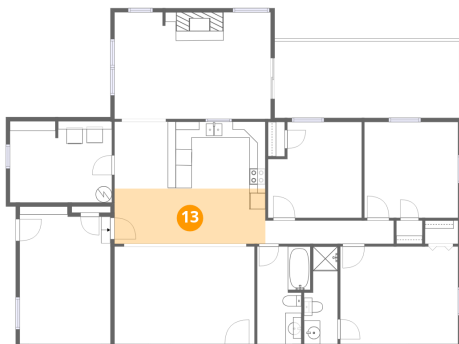
**12** Floor 1 - Bath



Dimensions: 6'7" x 12'1"  
Area: 80 sq. ft  
Counted as living area: Yes

Heated: Yes  
Finished: Yes  
Enclosed: Yes  
Contiguous: Yes  
Permitted: Yes  
Wet space: Yes  
Addition: No  
Conversion: No

**13** Floor 1 - Dining Area



Dimensions: 18'8" x 6'10"  
Area: 128 sq. ft  
Counted as living area: Yes

Heated: Yes  
Finished: Yes  
Enclosed: Yes  
Contiguous: Yes  
Permitted: Yes  
Wet space: No  
Addition: No  
Conversion: No