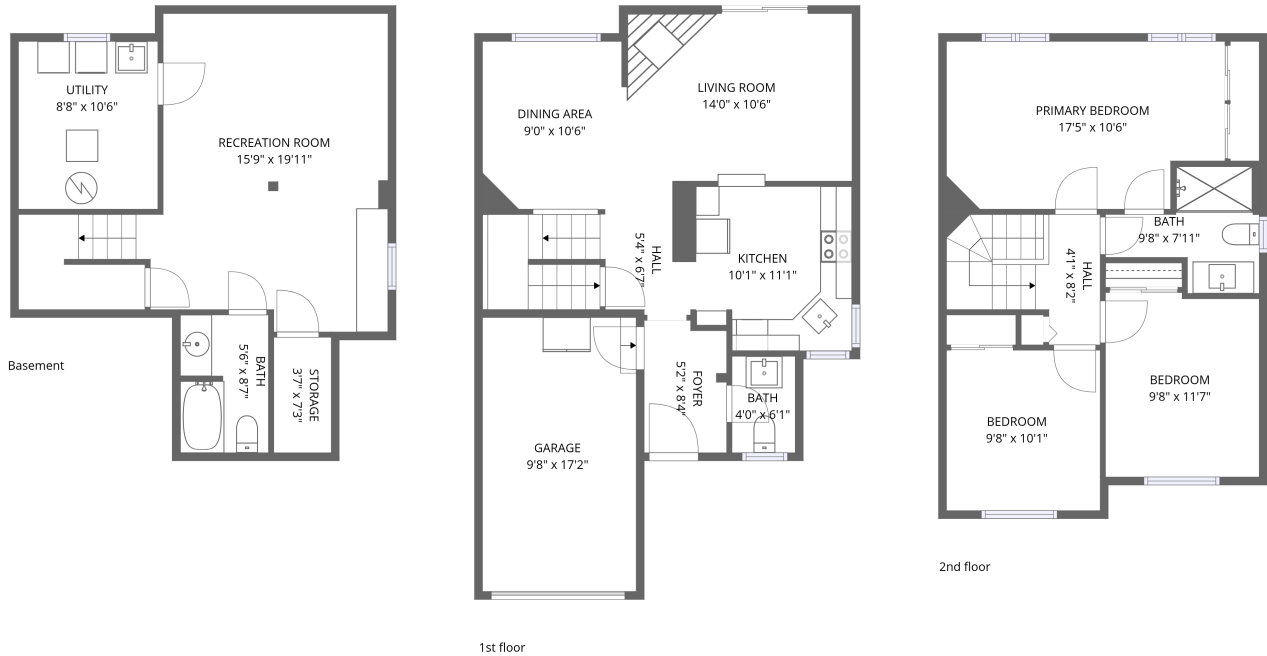


Home data report

**407 Sanderling Court, Chatelaine Village, Queenswood Village,
Orléans, Ontario, Canada, K1E 2V5**




Total Area: 1449 sq. ft

Basement: 386 sq. ft, 1st Floor: 508 sq. ft, 2nd Floor: 555 sq. ft

Excluded: Storage 26 sq. ft, Utility 92 sq. ft, Garage 165 sq. ft, Walls: 172 sq. ft

Property summary

 **3** Floors

 **3** Bedrooms

 **2** Bathrooms

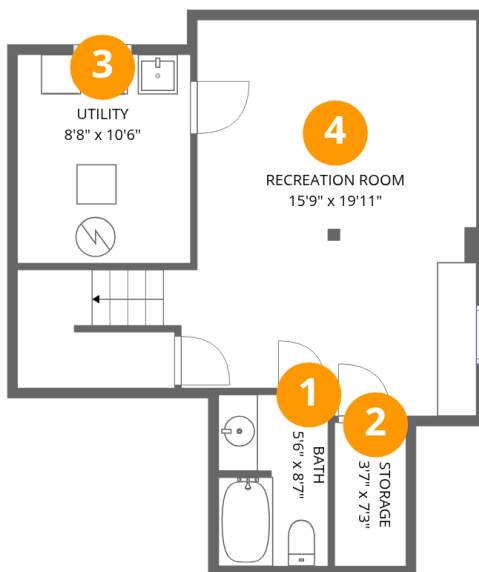
Home data report

**407 Sanderling Court, Chatelaine Village, Queenswood Village,
Orléans, Ontario, Canada, K1E 2V5**

 **1**
Half baths

 **1**
Garages

407 Sanderling Court, Chatelaine Village, Queenswood Village, Orléans, Ontario, Canada, K1E 2V5



Room dimensions

Floor 1 Below grade

Total:386sqft

Excluded: 118sqft

#		Dimensions	sqft	Counted as living area
1	Bath	5'6" x 8'7"	47 sq. ft	Yes
2	Storage	3'7" x 7'3"	26 sq. ft	No
3	Utility	8'8" x 10'6"	92 sq. ft	No
4	Recreation Room	15'9" x 19'11"	323 sq. ft	Yes

Home data report

**407 Sanderling Court, Chatelaine Village, Queenswood Village,
Orléans, Ontario, Canada, K1E 2V5**



Room dimensions

Floor 2

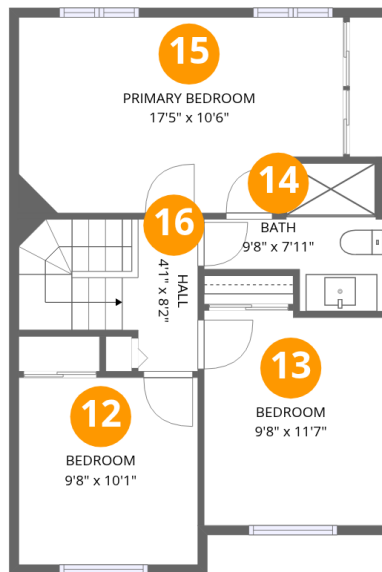
Total:508sqft

Excluded: 165sqft

#		Dimensions	sqft	Counted as living area
5	Garage	9'8" x 17'2"	165 sq. ft	No
6	Foyer	5'2" x 8'4"	41 sq. ft	Yes
7	Bath	4'0" x 6'1"	24 sq. ft	Yes
8	Hall	5'4" x 6'7"	76 sq. ft	Yes
9	Dining Area	9'0" x 10'6"	94 sq. ft	Yes
10	Living Room	14'0" x 10'6"	152 sq. ft	Yes
11	Kitchen	10'1" x 11'1"	100 sq. ft	Yes

Home data report

407 Sanderling Court, Chatelaine Village, Queenswood Village,
Orléans, Ontario, Canada, K1E 2V5



Room dimensions

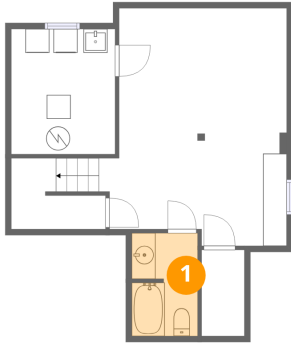
Floor 3

Total:555sqft Excluded: 0sqft

#		Dimensions	sqft	Counted as living area
12	Bedroom	9'8" x 10'1"	97 sq. ft	Yes
13	Bedroom	9'8" x 11'7"	109 sq. ft	Yes
14	Bath	9'8" x 7'11"	52 sq. ft	Yes
15	Primary Bedroom	17'5" x 10'6"	173 sq. ft	Yes
16	Hall	4'1" x 8'2"	65 sq. ft	Yes

407 Sanderling Court, Chatelaine Village, Queenswood Village,
Orléans, Ontario, Canada, K1E 2V5

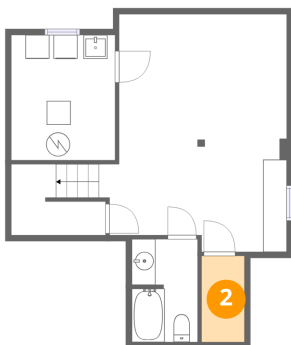
1 Floor 1 - Bath



Dimensions: 5'6" x 8'7"
Area: 47 sq. ft
Counted as living area: Yes

Heated: Yes
Finished: Yes
Enclosed: Yes
Contiguous: Yes
Permitted: Yes
Wet space: Yes
Addition: No
Conversion: No

2 Floor 1 - Storage

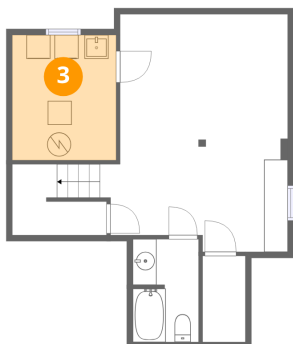


Dimensions: 3'7" x 7'3"
Area: 26 sq. ft
Counted as living area: No

Heated: No
Finished: No
Enclosed: No
Contiguous: Yes
Permitted: Yes
Wet space: No
Addition: No
Conversion: No

407 Sanderling Court, Chatelaine Village, Queenswood Village, Orléans, Ontario, Canada, K1E 2V5

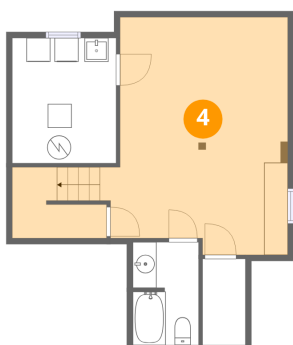
3 Floor 1 - Utility



Dimensions: 8'8" x 10'6"
Area: 92 sq. ft
Counted as living area: No

Heated: Yes
Finished: No
Enclosed: Yes
Contiguous: Yes
Permitted: Yes
Wet space: No
Addition: No
Conversion: No

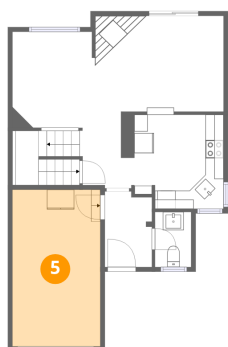
4 Floor 1 - Recreation Room



Dimensions: 15'9" x 19'11"
Area: 323 sq. ft
Counted as living area: Yes

Heated: Yes
Finished: Yes
Enclosed: Yes
Contiguous: Yes
Permitted: Yes
Wet space: No
Addition: No
Conversion: No

5 Floor 2 - Garage

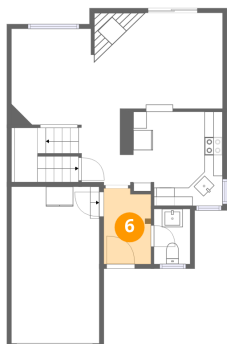


Dimensions: 9'8" x 17'2"
Area: 165 sq. ft
Counted as living area: No

Heated: No
Finished: No
Enclosed: Yes
Contiguous: Yes
Permitted: Yes
Wet space: No
Addition: No
Conversion: No

407 Sanderling Court, Chatelaine Village, Queenswood Village,
Orléans, Ontario, Canada, K1E 2V5

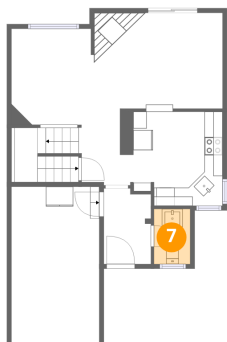
6 Floor 2 - Foyer



Dimensions: 5'2" x 8'4"
Area: 41 sq. ft
Counted as living area: Yes

Heated: Yes
Finished: Yes
Enclosed: Yes
Contiguous: Yes
Permitted: Yes
Wet space: No
Addition: No
Conversion: No

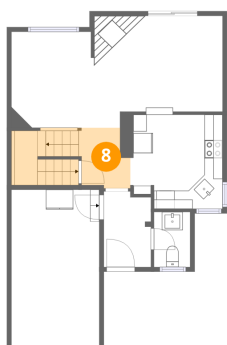
7 Floor 2 - Bath



Dimensions: 4'0" x 6'1"
Area: 24 sq. ft
Counted as living area: Yes

Heated: Yes
Finished: Yes
Enclosed: Yes
Contiguous: Yes
Permitted: Yes
Wet space: Yes
Addition: No
Conversion: No

8 Floor 2 - Hall

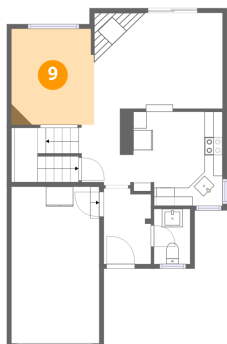


Dimensions: 5'4" x 6'7"
Area: 76 sq. ft
Counted as living area: Yes

Heated: Yes
Finished: Yes
Enclosed: Yes
Contiguous: Yes
Permitted: Yes
Wet space: No
Addition: No
Conversion: No

407 Sanderling Court, Chatelaine Village, Queenswood Village, Orléans, Ontario, Canada, K1E 2V5

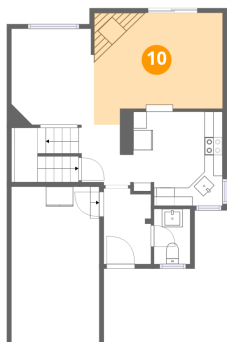
9 Floor 2 - Dining Area



Dimensions: 9'0" x 10'6"
Area: 94 sq. ft
Counted as living area: Yes

Heated: Yes
Finished: Yes
Enclosed: Yes
Contiguous: Yes
Permitted: Yes
Wet space: No
Addition: No
Conversion: No

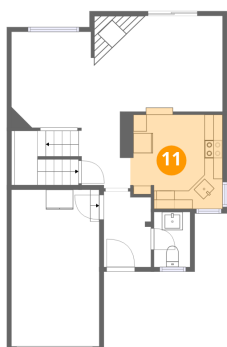
10 Floor 2 - Living Room



Dimensions: 14'0" x 10'6"
Area: 152 sq. ft
Counted as living area: Yes

Heated: Yes
Finished: Yes
Enclosed: Yes
Contiguous: Yes
Permitted: Yes
Wet space: No
Addition: No
Conversion: No

11 Floor 2 - Kitchen

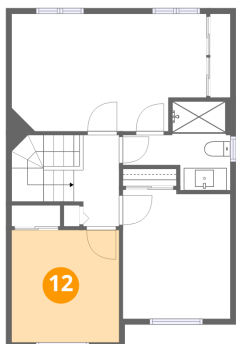


Dimensions: 10'1" x 11'1"
Area: 100 sq. ft
Counted as living area: Yes

Heated: Yes
Finished: Yes
Enclosed: Yes
Contiguous: Yes
Permitted: Yes
Wet space: No
Addition: No
Conversion: No

407 Sanderling Court, Chatelaine Village, Queenswood Village,
Orléans, Ontario, Canada, K1E 2V5

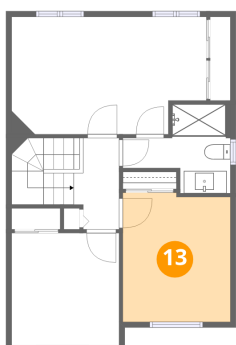
12 Floor 3 - Bedroom



Dimensions: 9'8" x 10'1"
Area: 97 sq. ft
Counted as living area: Yes

Heated: Yes
Finished: Yes
Enclosed: Yes
Contiguous: Yes
Permitted: Yes
Wet space: No
Addition: No
Conversion: No

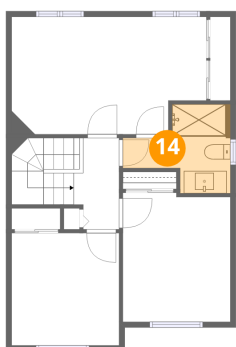
13 Floor 3 - Bedroom



Dimensions: 9'8" x 11'7"
Area: 109 sq. ft
Counted as living area: Yes

Heated: Yes
Finished: Yes
Enclosed: Yes
Contiguous: Yes
Permitted: Yes
Wet space: No
Addition: No
Conversion: No

14 Floor 3 - Bath

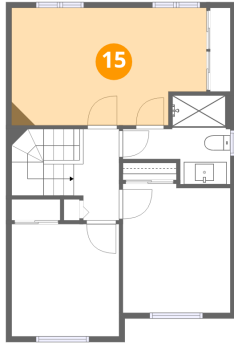


Dimensions: 9'8" x 7'11"
Area: 52 sq. ft
Counted as living area: Yes

Heated: Yes
Finished: Yes
Enclosed: Yes
Contiguous: Yes
Permitted: Yes
Wet space: Yes
Addition: No
Conversion: No

407 Sanderling Court, Chatelaine Village, Queenswood Village,
Orléans, Ontario, Canada, K1E 2V5

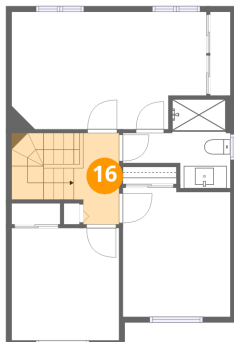
15 Floor 3 - Primary Bedroom



Dimensions: 17'5" x 10'6"
Area: 173 sq. ft
Counted as living area: Yes

Heated: Yes
Finished: Yes
Enclosed: Yes
Contiguous: Yes
Permitted: Yes
Wet space: No
Addition: No
Conversion: No

16 Floor 3 - Hall



Dimensions: 4'1" x 8'2"
Area: 65 sq. ft
Counted as living area: Yes

Heated: Yes
Finished: Yes
Enclosed: Yes
Contiguous: Yes
Permitted: Yes
Wet space: No
Addition: No
Conversion: No