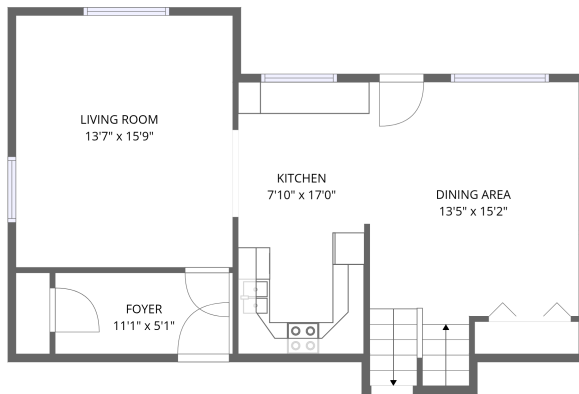
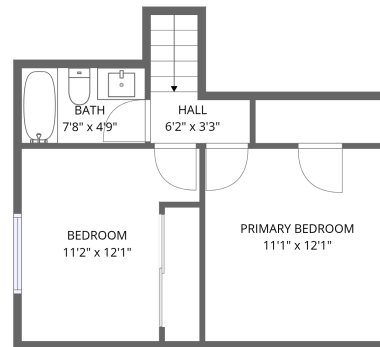


# Home data report

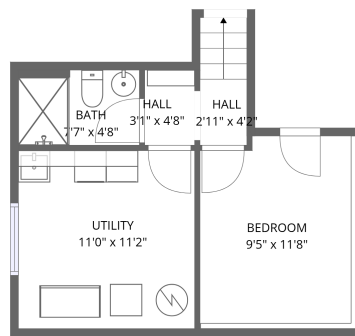
## 13122 Pony Express, Piedmont, SD, US



1st floor



2nd floor



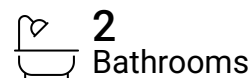
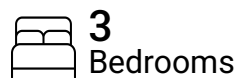
Basement

**Total Area: 1243 sq. ft**

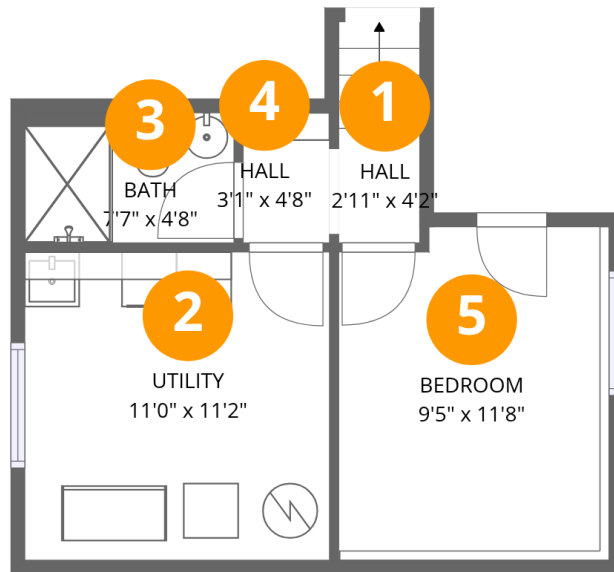
Basement: 201 sq. ft, 1st Floor: 669 sq. ft, 2nd Floor: 373 sq. ft

Excluded: Utility 123 sq. ft, Walls: 144 sq. ft

### Property summary



# 13122 Pony Express, Piedmont, SD, US



## Room dimensions

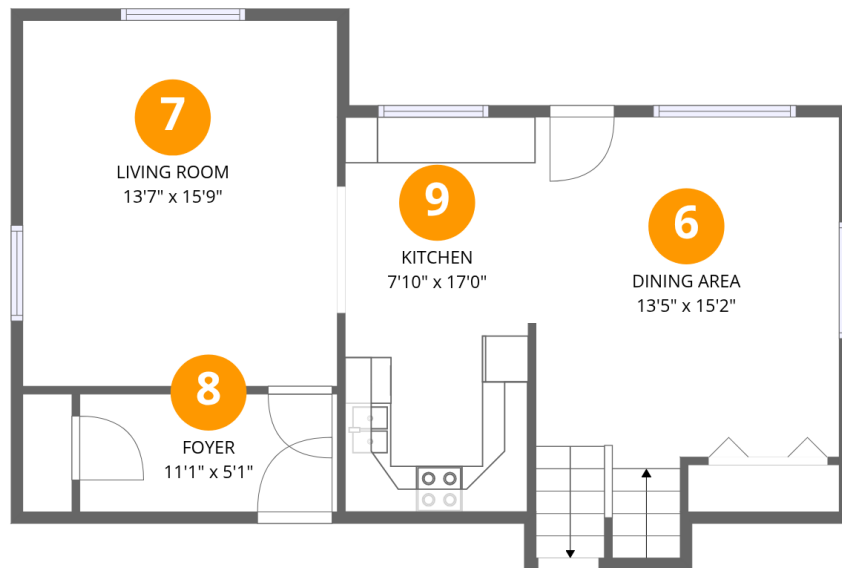
Floor 1 Below grade

Total:201sqft

Excluded: 123sqft

#		Dimensions	sqft	Counted as living area
1	Hall	2'11" x 4'2"	12 sq. ft	Yes
2	Utility	11'0" x 11'2"	123 sq. ft	No
3	Bath	7'7" x 4'8"	36 sq. ft	Yes
4	Hall	3'1" x 4'8"	15 sq. ft	Yes
5	Bedroom	9'5" x 11'8"	111 sq. ft	Yes

# 13122 Pony Express, Piedmont, SD, US



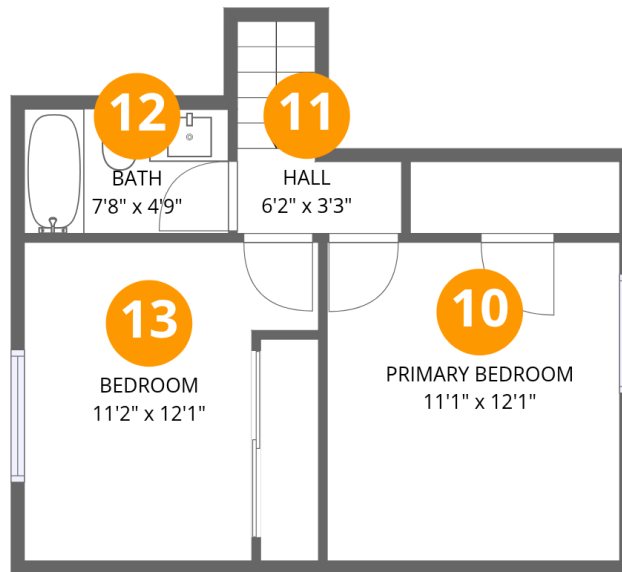
## Room dimensions

Floor 2

Total:669sqft Excluded: 0sqft

#		Dimensions	sqft	Counted as living area
6	Dining Area	13'5" x 15'2"	204 sq. ft	Yes
7	Living Room	13'7" x 15'9"	214 sq. ft	Yes
8	Foyer	11'1" x 5'1"	56 sq. ft	Yes
9	Kitchen	7'10" x 17'0"	133 sq. ft	Yes

# 13122 Pony Express, Piedmont, SD, US



## Room dimensions

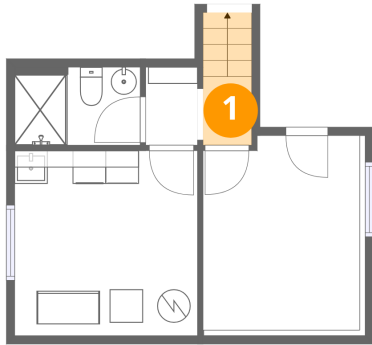
Floor 3

Total:373sqft

Excluded: 0sqft

#		Dimensions	sqft	Counted as living area
10	Primary Bedroom	11'1" x 12'1"	134 sq. ft	Yes
11	Hall	6'2" x 3'3"	20 sq. ft	Yes
12	Bath	7'8" x 4'9"	36 sq. ft	Yes
13	Bedroom	11'2" x 12'1"	134 sq. ft	Yes

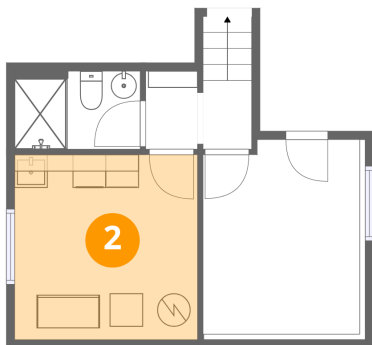
## 1 Floor 1 - Hall



Dimensions: 2'11" x 4'2"  
Area: 12 sq. ft  
Counted as living area: Yes

Heated: Yes  
Finished: Yes  
Enclosed: Yes  
Contiguous: Yes  
Permitted: Yes  
Wet space: No  
Addition: No  
Conversion: No

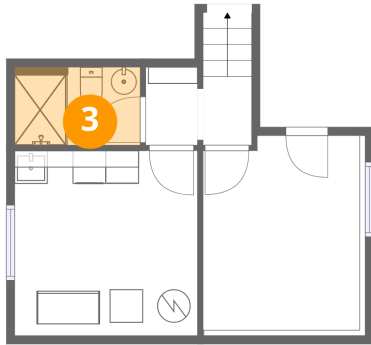
## 2 Floor 1 - Utility



Dimensions: 11'0" x 11'2"  
Area: 123 sq. ft  
Counted as living area: No

Heated: Yes  
Finished: No  
Enclosed: Yes  
Contiguous: Yes  
Permitted: Yes  
Wet space: No  
Addition: No  
Conversion: No

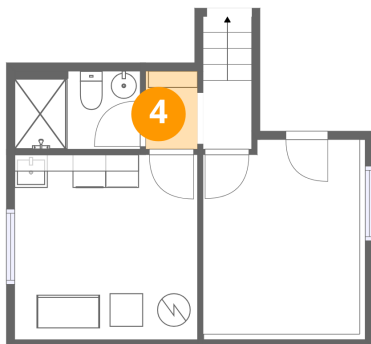
### 3 Floor 1 - Bath



Dimensions: 7'7" x 4'8"  
Area: 36 sq. ft  
Counted as living area: Yes

Heated: Yes  
Finished: Yes  
Enclosed: Yes  
Contiguous: Yes  
Permitted: Yes  
Wet space: Yes  
Addition: No  
Conversion: No

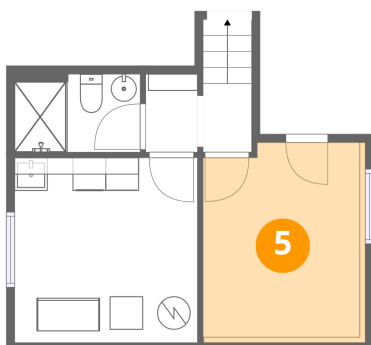
### 4 Floor 1 - Hall



Dimensions: 3'1" x 4'8"  
Area: 15 sq. ft  
Counted as living area: Yes

Heated: Yes  
Finished: Yes  
Enclosed: Yes  
Contiguous: Yes  
Permitted: Yes  
Wet space: No  
Addition: No  
Conversion: No

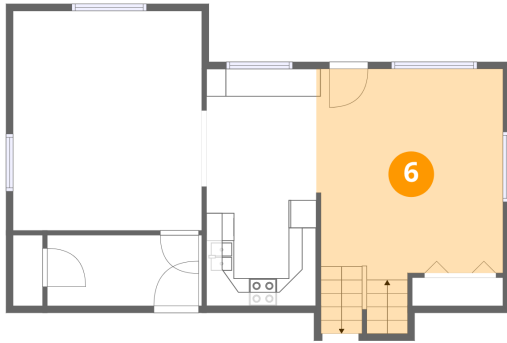
### 5 Floor 1 - Bedroom



Dimensions: 9'5" x 11'8"  
Area: 111 sq. ft  
Counted as living area: Yes

Heated: Yes  
Finished: Yes  
Enclosed: Yes  
Contiguous: Yes  
Permitted: Yes  
Wet space: No  
Addition: No  
Conversion: No

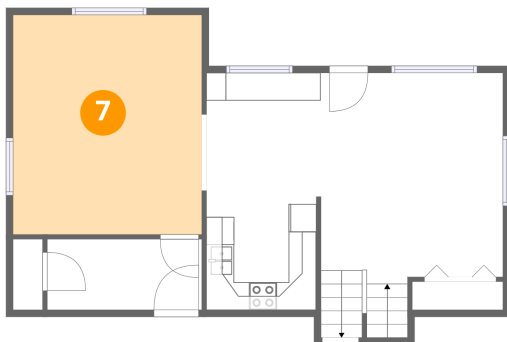
## 6 Floor 2 - Dining Area



Dimensions: 13'5" x 15'2"  
Area: 204 sq. ft  
Counted as living area: Yes

Heated: Yes  
Finished: Yes  
Enclosed: Yes  
Contiguous: Yes  
Permitted: Yes  
Wet space: No  
Addition: No  
Conversion: No

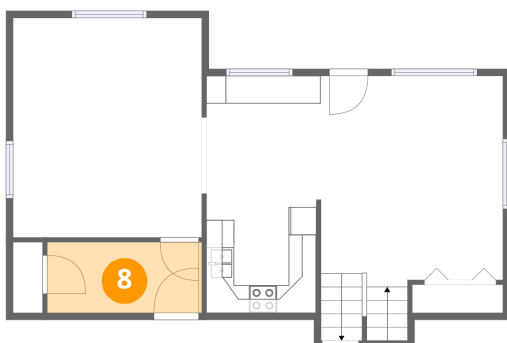
## 7 Floor 2 - Living Room



Dimensions: 13'7" x 15'9"  
Area: 214 sq. ft  
Counted as living area: Yes

Heated: Yes  
Finished: Yes  
Enclosed: Yes  
Contiguous: Yes  
Permitted: Yes  
Wet space: No  
Addition: No  
Conversion: No

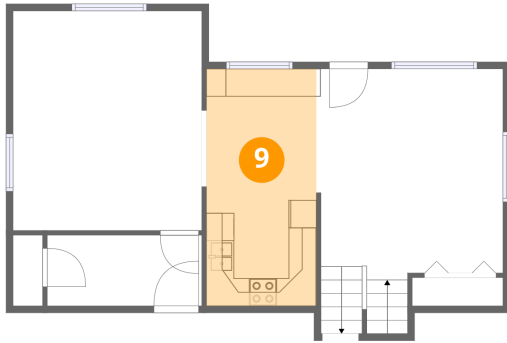
## 8 Floor 2 - Foyer



Dimensions: 11'1" x 5'1"  
Area: 56 sq. ft  
Counted as living area: Yes

Heated: Yes  
Finished: Yes  
Enclosed: Yes  
Contiguous: Yes  
Permitted: Yes  
Wet space: No  
Addition: No  
Conversion: No

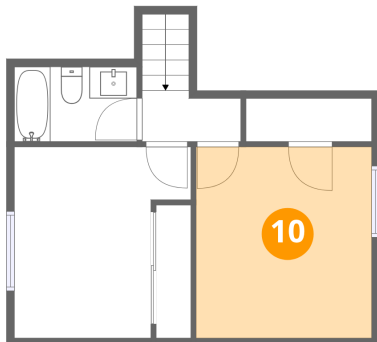
### 9 Floor 2 - Kitchen



Dimensions: 7'10" x 17'0"  
Area: 133 sq. ft  
Counted as living area: Yes

Heated: Yes  
Finished: Yes  
Enclosed: Yes  
Contiguous: Yes  
Permitted: Yes  
Wet space: No  
Addition: No  
Conversion: No

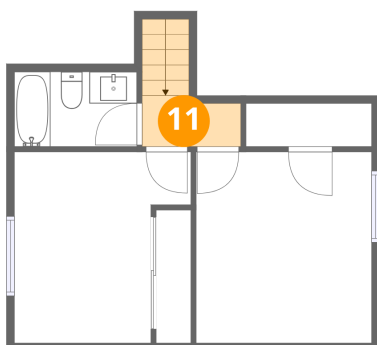
### 10 Floor 3 - Primary Bedroom



Dimensions: 11'1" x 12'1"  
Area: 134 sq. ft  
Counted as living area: Yes

Heated: Yes  
Finished: Yes  
Enclosed: Yes  
Contiguous: Yes  
Permitted: Yes  
Wet space: No  
Addition: No  
Conversion: No

### 11 Floor 3 - Hall

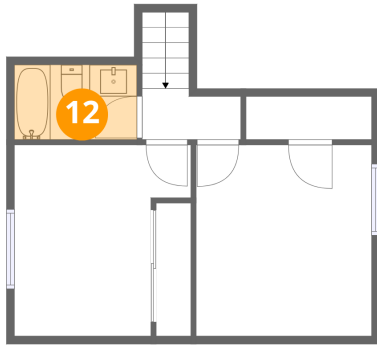


Dimensions: 6'2" x 3'3"  
Area: 20 sq. ft  
Counted as living area: Yes

Heated: Yes  
Finished: Yes  
Enclosed: Yes  
Contiguous: Yes  
Permitted: Yes  
Wet space: No  
Addition: No  
Conversion: No

**12** Floor 3 - Bath

---

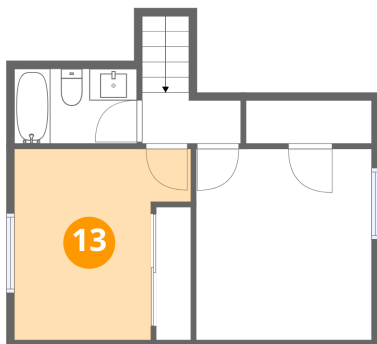


Dimensions: 7'8" x 4'9"  
Area: 36 sq. ft  
Counted as living area: Yes

Heated: Yes  
Finished: Yes  
Enclosed: Yes  
Contiguous: Yes  
Permitted: Yes  
Wet space: Yes  
Addition: No  
Conversion: No

**13** Floor 3 - Bedroom

---



Dimensions: 11'2" x 12'1"  
Area: 134 sq. ft  
Counted as living area: Yes

Heated: Yes  
Finished: Yes  
Enclosed: Yes  
Contiguous: Yes  
Permitted: Yes  
Wet space: No  
Addition: No  
Conversion: No