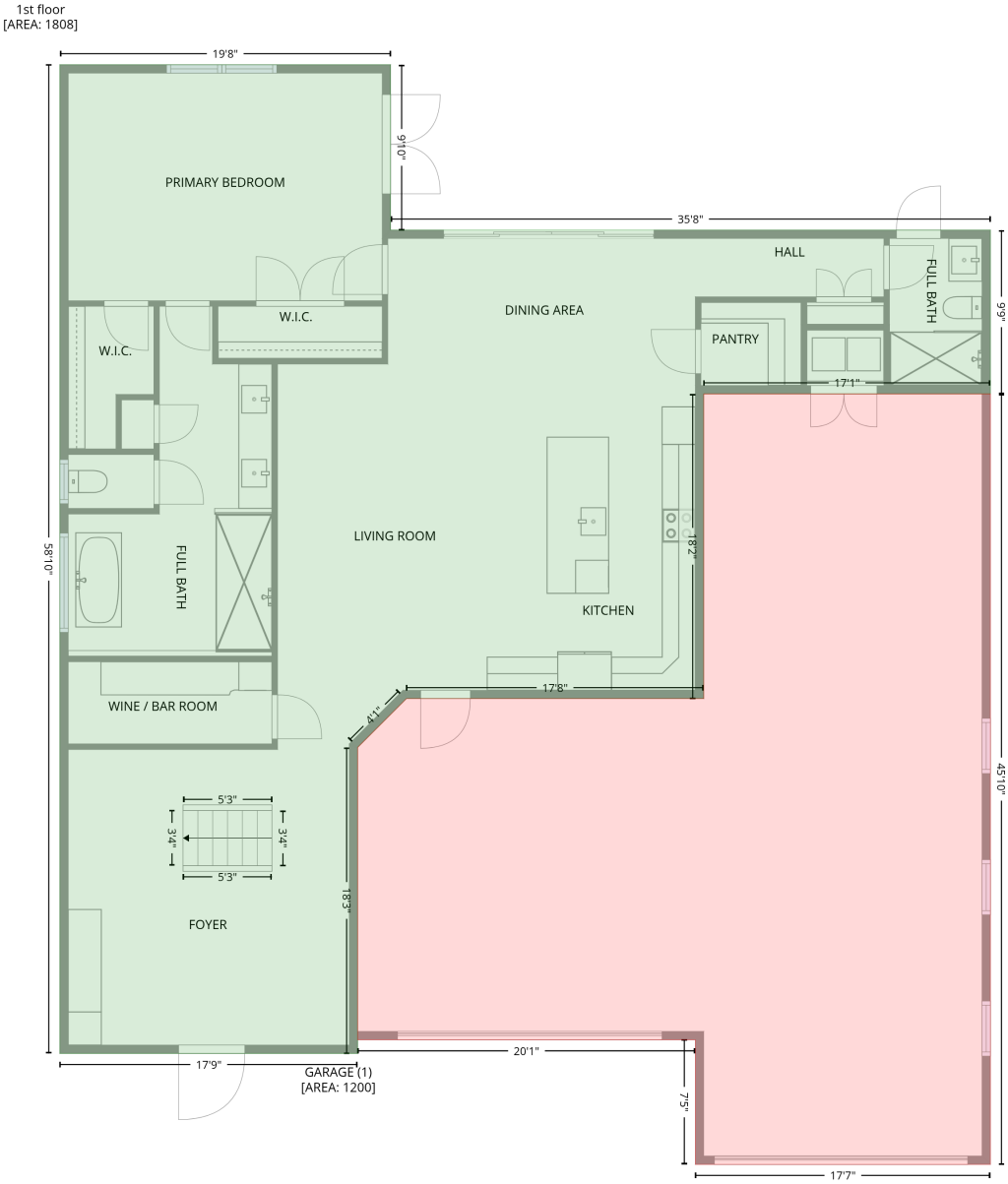


1295 South Banana River Drive, Merritt Island, Brevard County, Florida, United States, 32952

Gross Living Area: 4917 sq. ft

Level 1



Space	Area (sq. ft)	Calculation
1st floor (Living area)	1808	Coordinate Polygon Area Algorithm using inches $-((294.6 + 294.6) * (-56.6 - 61.5) + (294.6 + 723) * (61.5 - 61.5) + (723 + 723) * (61.5 - 178.5) + (723 + 518.3) * (178.5 - 178.5) + (518.3 + 518.3) * (178.5 - 396.2) + (518.3 + 305.9) * (396.2 - 396.2) + (305.9 + 271.1) * (396.2 - 431) + (271.1 + 271.1) * (431 - 649.7) + (271.1 + 58.4) * (649.7 - 649.7) + (58.4 + 58.4) * (649.7 - -56.6) + (58.4 + 294.6) * (-56.6 - -56.6)) * 0.5 * 0.00694$

1295 South Banana River Drive, Merritt Island, Brevard County, Florida, United States, 32952

Gross Living Area: 4917 sq. ft

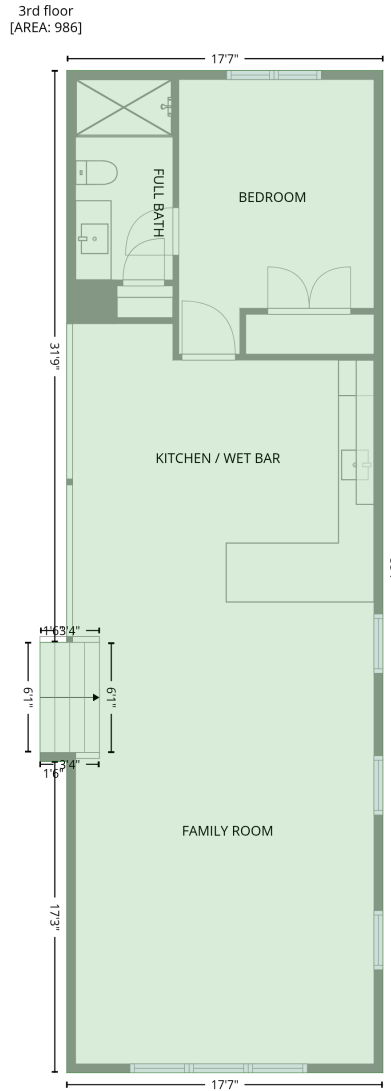
Level 1

Space	Area (sq. ft)	Calculation <small>Coordinate Polygon Area Algorithm using inches</small>
GARAGE (Non-living area)	1200	$-\left((723 + 723) * (178.5 - 728.9) + (723 + 512.3) * (728.9 - 728.9) + (512.3 + 512.3) * (728.9 - 639.9) + (512.3 + 271.1) * (639.9 - 639.9) + (271.1 + 271.1) * (639.9 - 431) + (271.1 + 305.9) * (431 - 396.2) + (305.9 + 518.3) * (396.2 - 396.2) + (518.3 + 518.3) * (396.2 - 178.5) + (518.3 + 723) * (178.5 - 178.5)) * 0.5 * 0.00694$

1295 South Banana River Drive, Merritt Island, Brevard County, Florida, United States, 32952

Gross Living Area: 4917 sq. ft

Level 3



Space	Area (sq. ft)	Calculation <small>Coordinate Polygon Area Algorithm using inches</small>
3rd floor (Living area)	986	$ \begin{aligned} & -((723 + 723) * (61.5 - 728.9) + (723 + 512.3) * (728.9 - 728.9) + (512.3 + 512.3) * (728.9 - 521.6) \\ & + (512.3 + 494.5) * (521.6 - 521.6) + (494.5 + 494.5) * (521.6 - 442.3) + (494.5 + 512.3) * (442.3 - \\ & 442.3) + (512.3 + 512.3) * (442.3 - 61.5) + (512.3 + 723) * (61.5 - 61.5)) * 0.5 * 0.00694 \end{aligned} $