

Home data report

15912 Aquilla Way, Prosper, Denton County, Texas, United States, 75078



Total Area: 3308 sq. ft

1st Floor: 1832 sq. ft, 2nd Floor: 1476 sq. ft

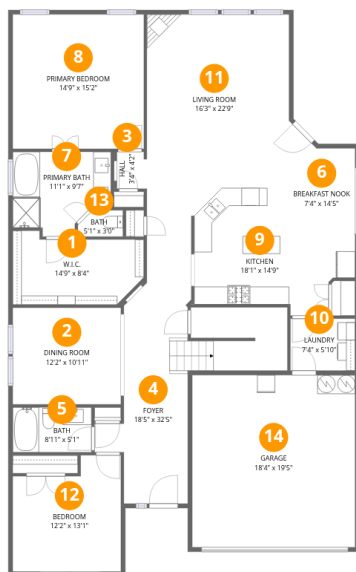
Excluded: Garage 357 sq. ft, Open to below 65 sq. ft, Walls: 211 sq. ft

Property summary



Home data report

15912 Aquilla Way, Prosper, Denton County, Texas, United States, 75078



Room dimensions

Floor 1

Total:1832sqft Excluded: 357sqft

#		Dimensions	sqft	Counted as living area
1	W.I.C.	14'9" x 8'4"	123 sq. ft	Yes
2	Dining Room	12'2" x 10'11"	133 sq. ft	Yes
3	Hall	3'4" x 4'2"	14 sq. ft	Yes
4	Foyer	18'5" x 32'5"	597 sq. ft	Yes
5	Bath	8'11" x 5'1"	45 sq. ft	Yes
6	Breakfast Nook	7'4" x 14'5"	105 sq. ft	Yes
7	Primary Bath	11'1" x 9'7"	106 sq. ft	Yes
8	Primary Bedroom	14'9" x 15'2"	224 sq. ft	Yes
9	Kitchen	18'1" x 14'9"	267 sq. ft	Yes
10	Laundry	7'4" x 5'10"	43 sq. ft	Yes
11	Living Room	16'3" x 22'9"	368 sq. ft	Yes

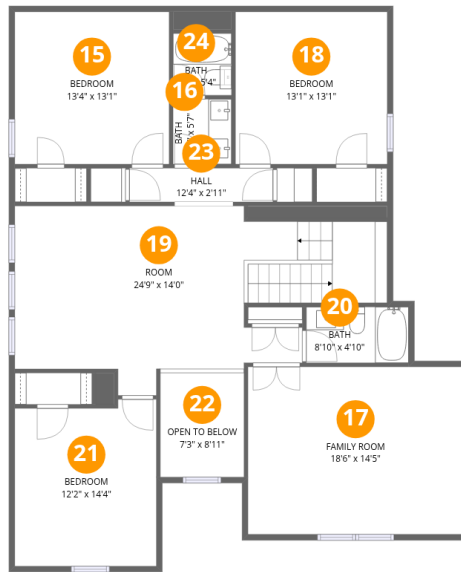
Home data report

15912 Aquilla Way, Prosper, Denton County, Texas, United States, 75078

#		Dimensions	sqft	Counted as living area
12	Bedroom	12'2" x 13'1"	160 sq. ft	Yes
13	Bath	5'1" x 3'0"	15 sq. ft	Yes
14	Garage	18'4" x 19'5"	357 sq. ft	No

Home data report

15912 Aquilla Way, Prosper, Denton County, Texas, United States, 75078



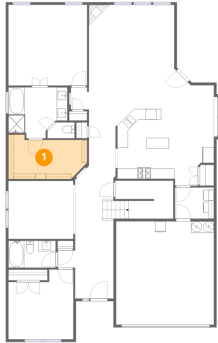
Room dimensions

Floor 2

Total:1476sqft Excluded: 65sqft

#		Dimensions	sqft	Counted as living area
15	Bedroom	13'4" x 13'1"	174 sq. ft	Yes
16	Bath	5'0" x 5'7"	28 sq. ft	Yes
17	Family Room	18'6" x 14'5"	267 sq. ft	Yes
18	Bedroom	13'1" x 13'1"	172 sq. ft	Yes
19	Room	24'9" x 14'0"	347 sq. ft	Yes
20	Bath	8'10" x 4'10"	42 sq. ft	Yes
21	Bedroom	12'2" x 14'4"	175 sq. ft	Yes
22	Open To Below	7'3" x 8'11"	64 sq. ft	No
23	Hall	12'4" x 2'11"	36 sq. ft	Yes
24	Bath	5'0" x 5'4"	27 sq. ft	Yes

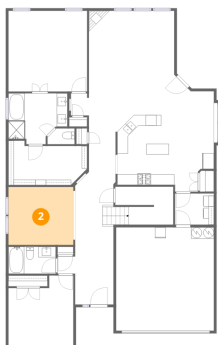
1 Floor 1 - W.I.C.



Dimensions: 14'9" x 8'4"
Area: 123 sq. ft
Counted as living area: Yes

Heated: Yes
Finished: Yes
Enclosed: Yes
Contiguous: Yes
Permitted: Yes
Wet space: No
Addition: No
Conversion: No

2 Floor 1 - Dining Room



Dimensions: 12'2" x 10'11"
Area: 133 sq. ft
Counted as living area: Yes

Heated: Yes
Finished: Yes
Enclosed: Yes
Contiguous: Yes
Permitted: Yes
Wet space: No
Addition: No
Conversion: No

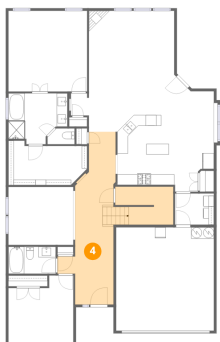
3 Floor 1 - Hall



Dimensions: 3'4" x 4'2"
Area: 14 sq. ft
Counted as living area: Yes

Heated: Yes
Finished: Yes
Enclosed: Yes
Contiguous: Yes
Permitted: Yes
Wet space: No
Addition: No
Conversion: No

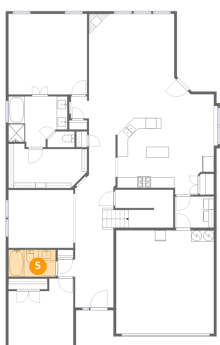
4 Floor 1 - Foyer



Dimensions: 18'5" x 32'5"
Area: 597 sq. ft
Counted as living area: Yes

Heated: Yes
Finished: Yes
Enclosed: Yes
Contiguous: Yes
Permitted: Yes
Wet space: No
Addition: No
Conversion: No

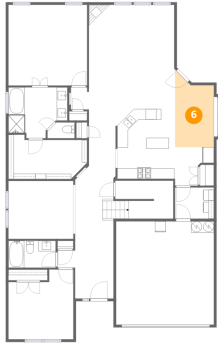
5 Floor 1 - Bath



Dimensions: 8'11" x 5'1"
Area: 45 sq. ft
Counted as living area: Yes

Heated: Yes
Finished: Yes
Enclosed: Yes
Contiguous: Yes
Permitted: Yes
Wet space: Yes
Addition: No
Conversion: No

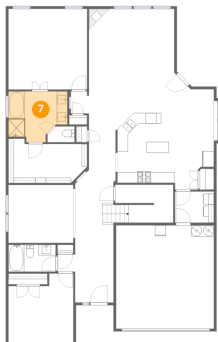
6 Floor 1 - Breakfast Nook



Dimensions: 7'4" x 14'5"
Area: 105 sq. ft
Counted as living area: Yes

Heated: Yes
Finished: Yes
Enclosed: Yes
Contiguous: Yes
Permitted: Yes
Wet space: No
Addition: No
Conversion: No

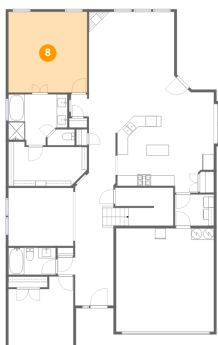
7 Floor 1 - Primary Bath



Dimensions: 11'1" x 9'7"
Area: 106 sq. ft
Counted as living area: Yes

Heated: Yes
Finished: Yes
Enclosed: Yes
Contiguous: Yes
Permitted: Yes
Wet space: Yes
Addition: No
Conversion: No

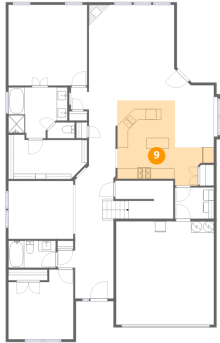
8 Floor 1 - Primary Bedroom



Dimensions: 14'9" x 15'2"
Area: 224 sq. ft
Counted as living area: Yes

Heated: Yes
Finished: Yes
Enclosed: Yes
Contiguous: Yes
Permitted: Yes
Wet space: No
Addition: No
Conversion: No

9 Floor 1 - Kitchen



Dimensions: 18'1" x 14'9"
Area: 267 sq. ft
Counted as living area: Yes

Heated: Yes
Finished: Yes
Enclosed: Yes
Contiguous: Yes
Permitted: Yes
Wet space: No
Addition: No
Conversion: No

10 Floor 1 - Laundry



Dimensions: 7'4" x 5'10"
Area: 43 sq. ft
Counted as living area: Yes

Heated: Yes
Finished: Yes
Enclosed: Yes
Contiguous: Yes
Permitted: Yes
Wet space: No
Addition: No
Conversion: No

11 Floor 1 - Living Room



Dimensions: 16'3" x 22'9"
Area: 368 sq. ft
Counted as living area: Yes

Heated: Yes
Finished: Yes
Enclosed: Yes
Contiguous: Yes
Permitted: Yes
Wet space: No
Addition: No
Conversion: No

12 Floor 1 - Bedroom



Dimensions: 12'2" x 13'1"
Area: 160 sq. ft
Counted as living area: Yes

Heated: Yes
Finished: Yes
Enclosed: Yes
Contiguous: Yes
Permitted: Yes
Wet space: No
Addition: No
Conversion: No

13 Floor 1 - Bath



Dimensions: 5'1" x 3'0"
Area: 15 sq. ft
Counted as living area: Yes

Heated: Yes
Finished: Yes
Enclosed: Yes
Contiguous: Yes
Permitted: Yes
Wet space: Yes
Addition: No
Conversion: No

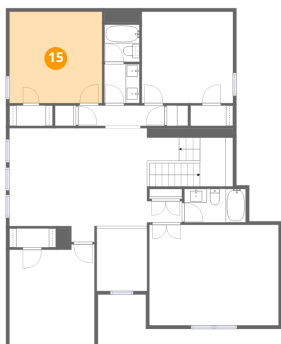
14 Floor 1 - Garage



Dimensions: 18'4" x 19'5"
Area: 357 sq. ft
Counted as living area: No

Heated: No
Finished: No
Enclosed: Yes
Contiguous: Yes
Permitted: Yes
Wet space: No
Addition: No
Conversion: No

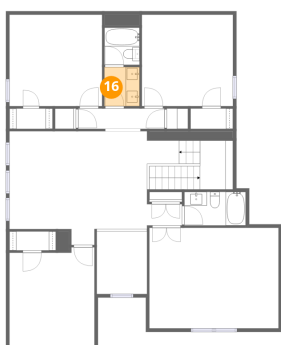
15 Floor 2 - Bedroom



Dimensions: 13'4" x 13'1"
Area: 174 sq. ft
Counted as living area: Yes

Heated: Yes
Finished: Yes
Enclosed: Yes
Contiguous: Yes
Permitted: Yes
Wet space: No
Addition: No
Conversion: No

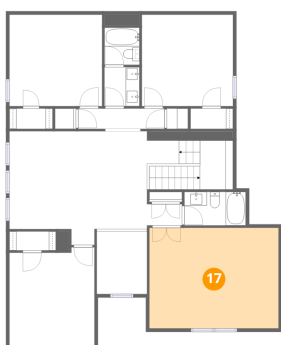
16 Floor 2 - Bath



Dimensions: 5'0" x 5'7"
Area: 28 sq. ft
Counted as living area: Yes

Heated: Yes
Finished: Yes
Enclosed: Yes
Contiguous: Yes
Permitted: Yes
Wet space: Yes
Addition: No
Conversion: No

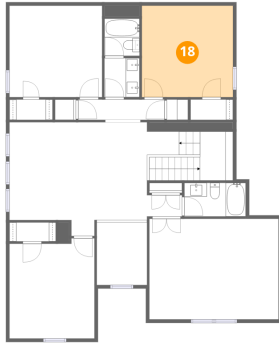
17 Floor 2 - Family Room



Dimensions: 18'6" x 14'5"
Area: 267 sq. ft
Counted as living area: Yes

Heated: Yes
Finished: Yes
Enclosed: Yes
Contiguous: Yes
Permitted: Yes
Wet space: No
Addition: No
Conversion: No

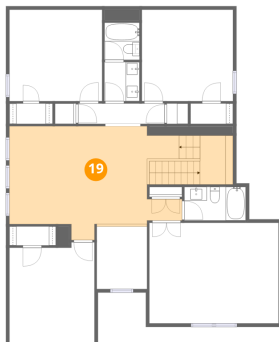
18 Floor 2 - Bedroom



Dimensions: 13'1" x 13'1"
Area: 172 sq. ft
Counted as living area: Yes

Heated: Yes
Finished: Yes
Enclosed: Yes
Contiguous: Yes
Permitted: Yes
Wet space: No
Addition: No
Conversion: No

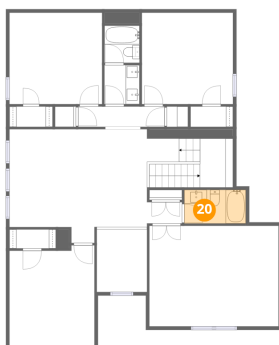
19 Floor 2 - Room



Dimensions: 24'9" x 14'0"
Area: 347 sq. ft
Counted as living area: Yes

Heated: Yes
Finished: Yes
Enclosed: Yes
Contiguous: Yes
Permitted: Yes
Wet space: No
Addition: No
Conversion: No

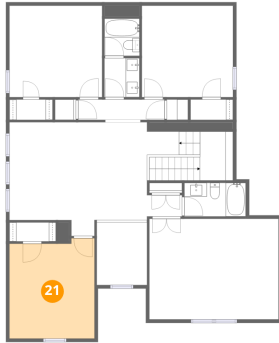
20 Floor 2 - Bath



Dimensions: 8'10" x 4'10"
Area: 42 sq. ft
Counted as living area: Yes

Heated: Yes
Finished: Yes
Enclosed: Yes
Contiguous: Yes
Permitted: Yes
Wet space: Yes
Addition: No
Conversion: No

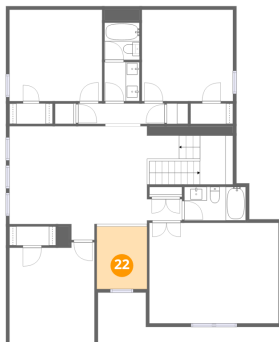
21 Floor 2 - Bedroom



Dimensions: 12'2" x 14'4"
Area: 175 sq. ft
Counted as living area: Yes

Heated: Yes
Finished: Yes
Enclosed: Yes
Contiguous: Yes
Permitted: Yes
Wet space: No
Addition: No
Conversion: No

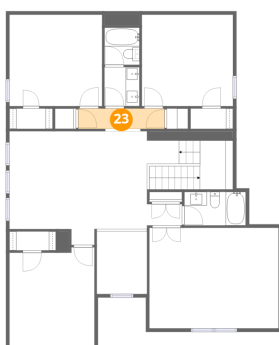
22 Floor 2 - Open To Below



Dimensions: 7'3" x 8'11"
Area: 64 sq. ft
Counted as living area: No

Heated: No
Finished: No
Enclosed: No
Contiguous: Yes
Permitted: No
Wet space: No
Addition: No
Conversion: No

23 Floor 2 - Hall



Dimensions: 12'4" x 2'11"
Area: 36 sq. ft
Counted as living area: Yes

Heated: Yes
Finished: Yes
Enclosed: Yes
Contiguous: Yes
Permitted: Yes
Wet space: No
Addition: No
Conversion: No

Home data report

15912 Aquilla Way, Prosper, Denton County, Texas, United States, 75078

24 Floor 2 - Bath



Dimensions: 5'0" x 5'4"
Area: 27 sq. ft
Counted as living area: Yes

Heated: Yes
Finished: Yes
Enclosed: Yes
Contiguous: Yes
Permitted: Yes
Wet space: Yes
Addition: No
Conversion: No