

Home data report

2655 30th St #201, Santa Monica, CA, US




Total Area: 1008 sq. ft

1st Floor: 809 sq. ft, 2nd Floor: 199 sq. ft

Excluded: Balcony 30 sq. ft, Fireplace 13 sq. ft, Open to below 240 sq. ft, Walls: 0 sq. ft

Property summary

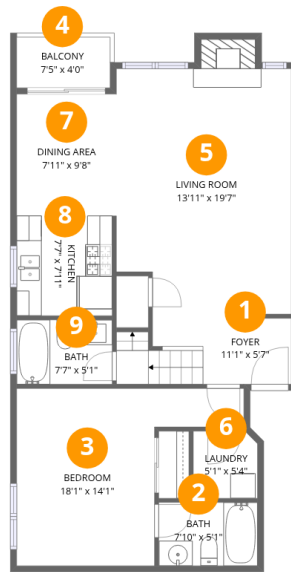
 **2** Floors

 **2** Bedrooms

 **2** Bathrooms

Home data report

2655 30th St #201, Santa Monica, CA, US

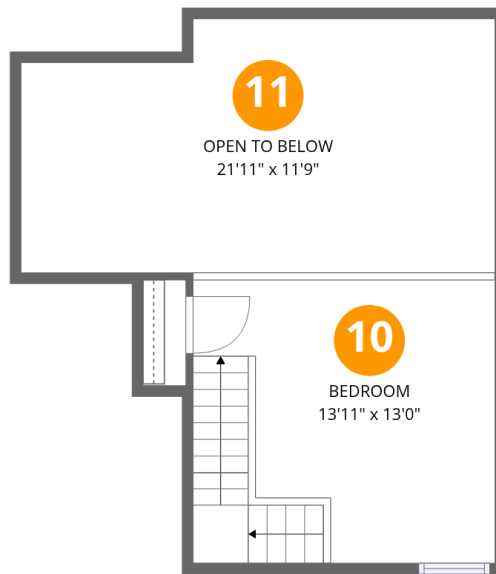


Room dimensions

Floor 1

Total:809sqft Excluded: 43sqft

#		Dimensions	sqft	Counted as living area
1	Foyer	11'1" x 5'7"	62 sq. ft	Yes
2	Bath	7'10" x 5'1"	40 sq. ft	Yes
3	Bedroom	18'1" x 14'1"	256 sq. ft	Yes
4	Balcony	7'5" x 4'0"	30 sq. ft	No
5	Living Room	13'11" x 19'7"	272 sq. ft	Yes
6	Laundry	5'1" x 5'4"	27 sq. ft	Yes
7	Dining Area	7'11" x 9'8"	77 sq. ft	Yes
8	Kitchen	7'7" x 7'11"	61 sq. ft	Yes
9	Bath	7'7" x 5'1"	39 sq. ft	Yes



Room dimensions

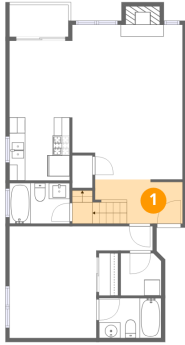
Floor 2

Total:199sqft

Excluded: 240sqft

#		Dimensions	sqft	Counted as living area
10	Bedroom	13'11" x 13'0"	182 sq. ft	Yes
11	Open To Below	21'11" x 11'9"	256 sq. ft	No

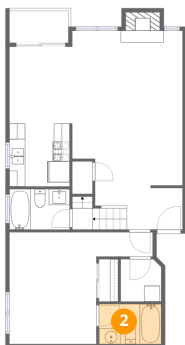
1 Floor 1 - Foyer



Dimensions: 11'1" x 5'7"
Area: 62 sq. ft
Counted as living area: Yes

Heated: Yes
Finished: Yes
Enclosed: Yes
Contiguous: Yes
Permitted: Yes
Wet space: No
Addition: No
Conversion: No

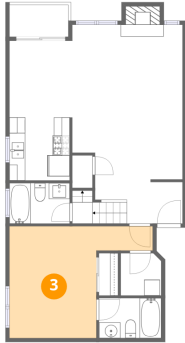
2 Floor 1 - Bath



Dimensions: 7'10" x 5'1"
Area: 40 sq. ft
Counted as living area: Yes

Heated: Yes
Finished: Yes
Enclosed: Yes
Contiguous: Yes
Permitted: Yes
Wet space: Yes
Addition: No
Conversion: No

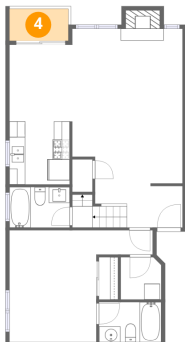
3 Floor 1 - Bedroom



Dimensions: 18'1" x 14'1"
Area: 256 sq. ft
Counted as living area: Yes

Heated: Yes
Finished: Yes
Enclosed: Yes
Contiguous: Yes
Permitted: Yes
Wet space: No
Addition: No
Conversion: No

4 Floor 1 - Balcony



Dimensions: 7'5" x 4'0"
Area: 30 sq. ft
Counted as living area: No

Heated: No
Finished: No
Enclosed: No
Contiguous: Yes
Permitted: Yes
Wet space: No
Addition: No
Conversion: No

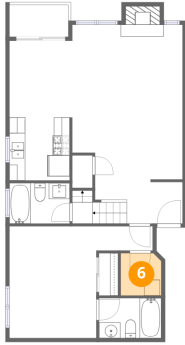
5 Floor 1 - Living Room



Dimensions: 13'11" x 19'7"
Area: 272 sq. ft
Counted as living area: Yes

Heated: Yes
Finished: Yes
Enclosed: Yes
Contiguous: Yes
Permitted: Yes
Wet space: No
Addition: No
Conversion: No

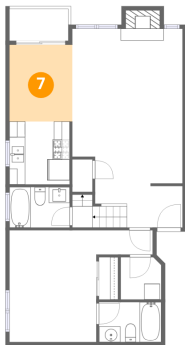
6 Floor 1 - Laundry



Dimensions: 5'1" x 5'4"
Area: 27 sq. ft
Counted as living area: Yes

Heated: Yes
Finished: Yes
Enclosed: Yes
Contiguous: Yes
Permitted: Yes
Wet space: No
Addition: No
Conversion: No

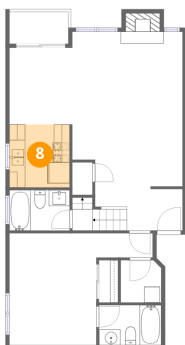
7 Floor 1 - Dining Area



Dimensions: 7'11" x 9'8"
Area: 77 sq. ft
Counted as living area: Yes

Heated: Yes
Finished: Yes
Enclosed: Yes
Contiguous: Yes
Permitted: Yes
Wet space: No
Addition: No
Conversion: No

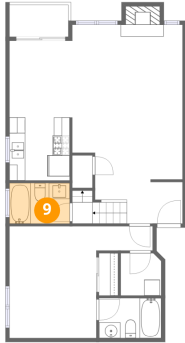
8 Floor 1 - Kitchen



Dimensions: 7'7" x 7'11"
Area: 61 sq. ft
Counted as living area: Yes

Heated: Yes
Finished: Yes
Enclosed: Yes
Contiguous: Yes
Permitted: Yes
Wet space: No
Addition: No
Conversion: No

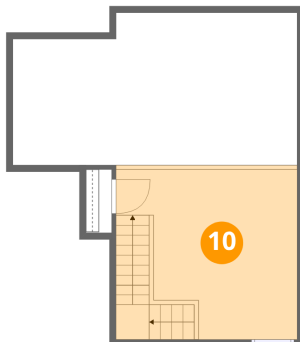
9 Floor 1 - Bath



Dimensions: 7'7" x 5'1"
Area: 39 sq. ft
Counted as living area: Yes

Heated: Yes
Finished: Yes
Enclosed: Yes
Contiguous: Yes
Permitted: Yes
Wet space: Yes
Addition: No
Conversion: No

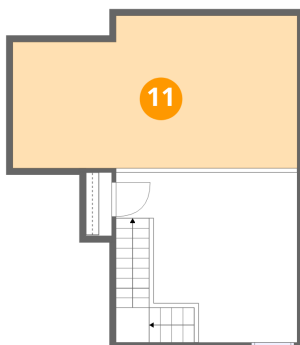
10 Floor 2 - Bedroom



Dimensions: 13'11" x 13'0"
Area: 182 sq. ft
Counted as living area: No

Heated: Yes
Finished: Yes
Enclosed: Yes
Contiguous: No
Permitted: Yes
Wet space: No
Addition: No
Conversion: No

11 Floor 2 - Open To Below



Dimensions: 21'11" x 11'9"
Area: 256 sq. ft
Counted as living area: No

Heated: No
Finished: No
Enclosed: No
Contiguous: Yes
Permitted: No
Wet space: No
Addition: No
Conversion: No