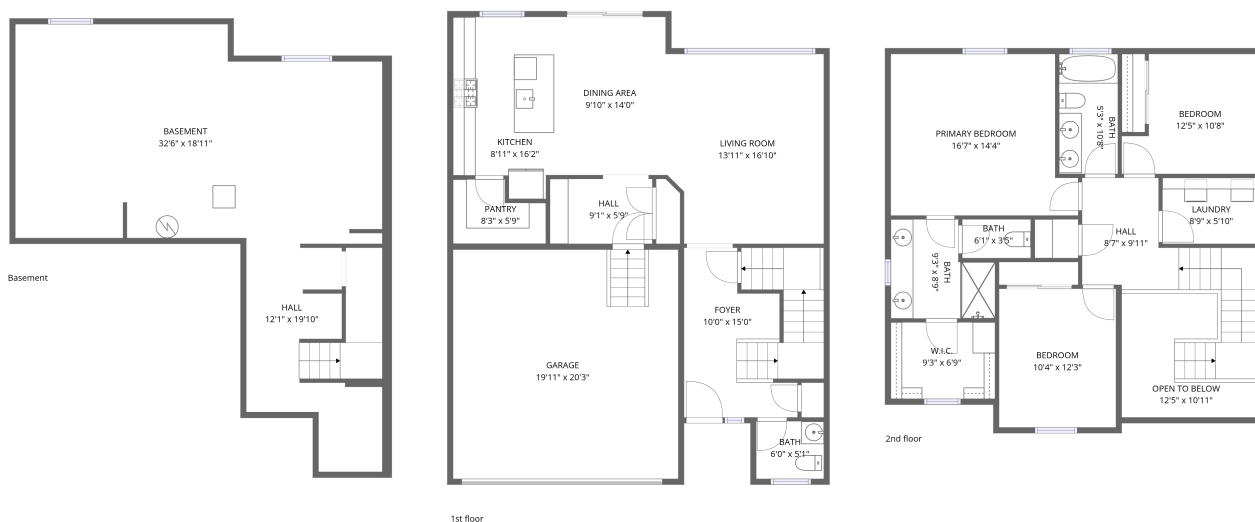


Home data report

11029 Ursula St., Commerce City, CO, US



Total Area: 1798 sq. ft

Basement: 0 sq. ft, 1st Floor: 837 sq. ft, 2nd Floor: 961 sq. ft

Excluded: Basement 579 sq. ft, Hall 207 sq. ft, Garage 405 sq. ft, Open to below 90 sq. ft, Walls: 251 sq. ft

Property summary

 **3** Floors

 **3** Bedrooms

 **2** Bathrooms

Home data report

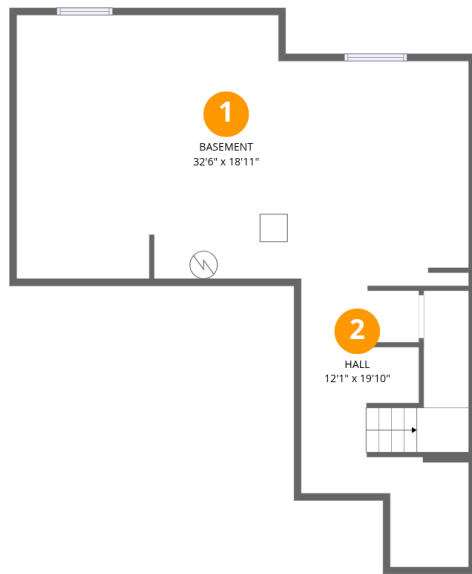
11029 Ursula St.,Commerce City,CO,US



1
Half baths



1
Garages



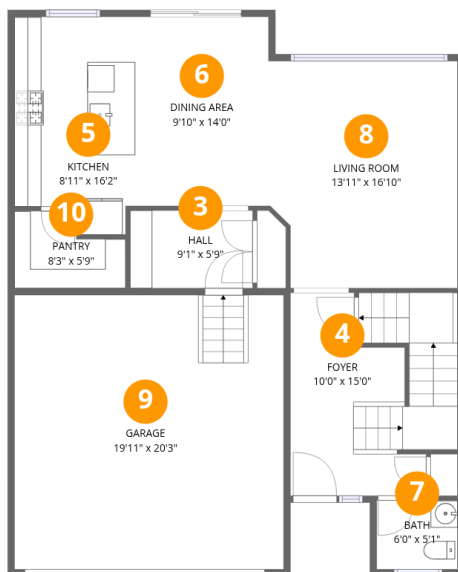
Room dimensions

Floor 1 Below grade

Total: 0sqft

Excluded: 786sqft

#		Dimensions	sqft	Counted as living area
1	Basement	32'6" x 18'11"	615 sq. ft	No
2	Hall	12'1" x 19'10"	239 sq. ft	No



Room dimensions

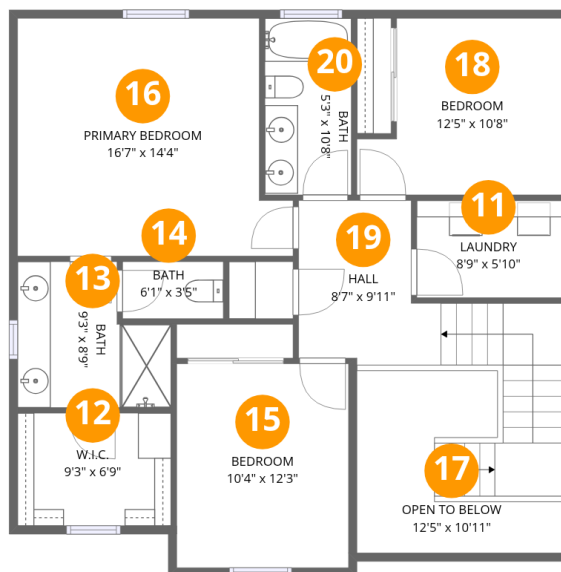
Floor 2

Total:837sqft Excluded: 405sqft

#		Dimensions	sqft	Counted as living area
3	Hall	9'1" x 5'9"	52 sq. ft	Yes
4	Foyer	10'0" x 15'0"	151 sq. ft	Yes
5	Kitchen	8'11" x 16'2"	144 sq. ft	Yes
6	Dining Area	9'10" x 14'0"	138 sq. ft	Yes
7	Bath	6'0" x 5'1"	31 sq. ft	Yes
8	Living Room	13'11" x 16'10"	234 sq. ft	Yes
9	Garage	19'11" x 20'3"	404 sq. ft	No
10	Pantry	8'3" x 5'9"	47 sq. ft	Yes

Home data report

11029 Ursula St., Commerce City, CO, US



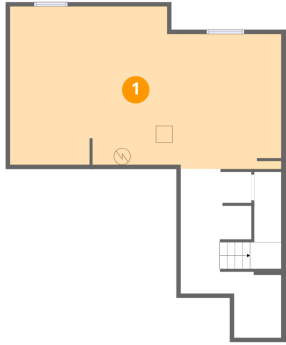
Room dimensions

Floor 3

Total:961sqft Excluded: 90sqft

#		Dimensions	sqft	Counted as living area
11	Laundry	8'9" x 5'10"	51 sq. ft	Yes
12	W.I.C.	9'3" x 6'9"	62 sq. ft	Yes
13	Bath	9'3" x 8'9"	81 sq. ft	Yes
14	Bath	6'1" x 3'5"	21 sq. ft	Yes
15	Bedroom	10'4" x 12'3"	127 sq. ft	Yes
16	Primary Bedroom	16'7" x 14'4"	238 sq. ft	Yes
17	Open To Below	12'5" x 10'11"	136 sq. ft	No
18	Bedroom	12'5" x 10'8"	132 sq. ft	Yes
19	Hall	8'7" x 9'11"	85 sq. ft	Yes
20	Bath	5'3" x 10'8"	55 sq. ft	Yes

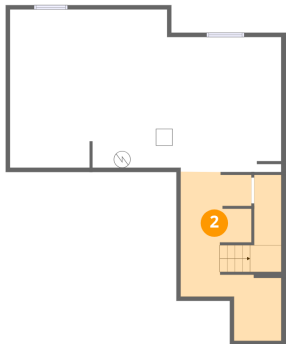
1 Floor 1 - Basement



Dimensions: 32'6" x 18'11"
Area: 615 sq. ft
Counted as living area: No

Heated: Yes
Finished: No
Enclosed: Yes
Contiguous: Yes
Permitted: Yes
Wet space: No
Addition: No
Conversion: No

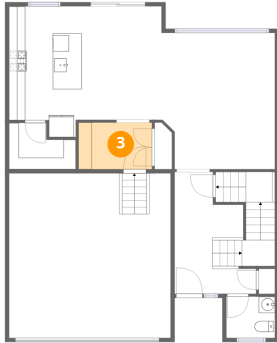
2 Floor 1 - Hall



Dimensions: 12'1" x 19'10"
Area: 239 sq. ft
Counted as living area: No

Heated: Yes
Finished: No
Enclosed: Yes
Contiguous: Yes
Permitted: Yes
Wet space: No
Addition: No
Conversion: No

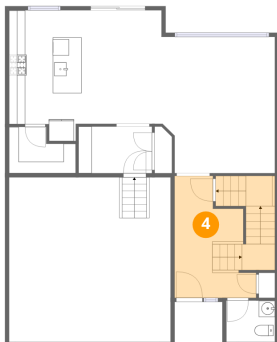
3 Floor 2 - Hall



Dimensions: 9'1" x 5'9"
Area: 52 sq. ft
Counted as living area: Yes

Heated: Yes
Finished: Yes
Enclosed: Yes
Contiguous: Yes
Permitted: Yes
Wet space: No
Addition: No
Conversion: No

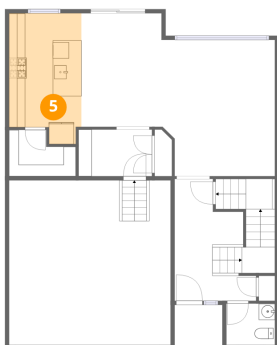
4 Floor 2 - Foyer



Dimensions: 10'0" x 15'0"
Area: 151 sq. ft
Counted as living area: Yes

Heated: Yes
Finished: Yes
Enclosed: Yes
Contiguous: Yes
Permitted: Yes
Wet space: No
Addition: No
Conversion: No

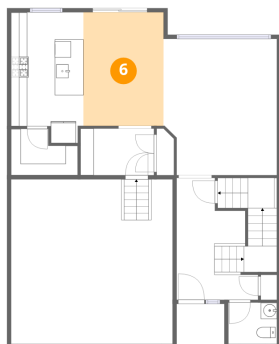
5 Floor 2 - Kitchen



Dimensions: 8'11" x 16'2"
Area: 144 sq. ft
Counted as living area: Yes

Heated: Yes
Finished: Yes
Enclosed: Yes
Contiguous: Yes
Permitted: Yes
Wet space: No
Addition: No
Conversion: No

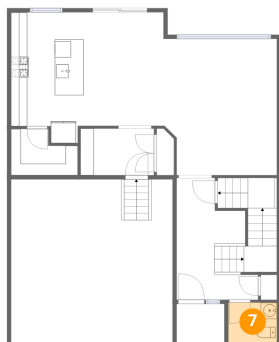
6 Floor 2 - Dining Area



Dimensions: 9'10" x 14'0"
Area: 138 sq. ft
Counted as living area: Yes

Heated: Yes
Finished: Yes
Enclosed: Yes
Contiguous: Yes
Permitted: Yes
Wet space: No
Addition: No
Conversion: No

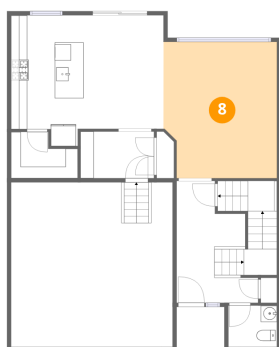
7 Floor 2 - Bath



Dimensions: 6'0" x 5'1"
Area: 31 sq. ft
Counted as living area: Yes

Heated: Yes
Finished: Yes
Enclosed: Yes
Contiguous: Yes
Permitted: Yes
Wet space: Yes
Addition: No
Conversion: No

8 Floor 2 - Living Room



Dimensions: 13'11" x 16'10"
Area: 234 sq. ft
Counted as living area: Yes

Heated: Yes
Finished: Yes
Enclosed: Yes
Contiguous: Yes
Permitted: Yes
Wet space: No
Addition: No
Conversion: No

9 Floor 2 - Garage



Dimensions: 19'11" x 20'3"

Area: 404 sq. ft

Counted as living area: No

Heated: No

Finished: No

Enclosed: Yes

Contiguous: Yes

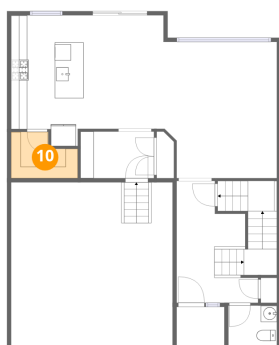
Permitted: Yes

Wet space: No

Addition: No

Conversion: No

10 Floor 2 - Pantry



Dimensions: 8'3" x 5'9"

Area: 47 sq. ft

Counted as living area: Yes

Heated: Yes

Finished: Yes

Enclosed: Yes

Contiguous: Yes

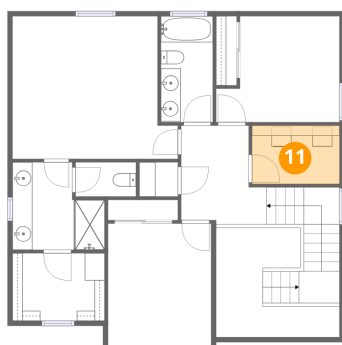
Permitted: Yes

Wet space: No

Addition: No

Conversion: No

11 Floor 3 - Laundry



Dimensions: 8'9" x 5'10"

Area: 51 sq. ft

Counted as living area: Yes

Heated: Yes

Finished: Yes

Enclosed: Yes

Contiguous: Yes

Permitted: Yes

Wet space: No

Addition: No

Conversion: No

12 Floor 3 - W.I.C.



Dimensions: 9'3" x 6'9"
Area: 62 sq. ft
Counted as living area: Yes

Heated: Yes
Finished: Yes
Enclosed: Yes
Contiguous: Yes
Permitted: Yes
Wet space: No
Addition: No
Conversion: No

13 Floor 3 - Bath



Dimensions: 9'3" x 8'9"
Area: 81 sq. ft
Counted as living area: Yes

Heated: Yes
Finished: Yes
Enclosed: Yes
Contiguous: Yes
Permitted: Yes
Wet space: Yes
Addition: No
Conversion: No

14 Floor 3 - Bath



Dimensions: 6'1" x 3'5"
Area: 21 sq. ft
Counted as living area: Yes

Heated: Yes
Finished: Yes
Enclosed: Yes
Contiguous: Yes
Permitted: Yes
Wet space: Yes
Addition: No
Conversion: No

15 Floor 3 - Bedroom



Dimensions: 10'4" x 12'3"
Area: 127 sq. ft
Counted as living area: Yes

Heated: Yes
Finished: Yes
Enclosed: Yes
Contiguous: Yes
Permitted: Yes
Wet space: No
Addition: No
Conversion: No

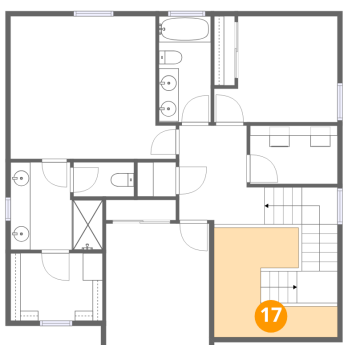
16 Floor 3 - Primary Bedroom



Dimensions: 16'7" x 14'4"
Area: 238 sq. ft
Counted as living area: Yes

Heated: Yes
Finished: Yes
Enclosed: Yes
Contiguous: Yes
Permitted: Yes
Wet space: No
Addition: No
Conversion: No

17 Floor 3 - Open To Below



Dimensions: 12'5" x 10'11"
Area: 136 sq. ft
Counted as living area: No

Heated: No
Finished: No
Enclosed: No
Contiguous: Yes
Permitted: No
Wet space: No
Addition: No
Conversion: No

18 Floor 3 - Bedroom



Dimensions: 12'5" x 10'8"
Area: 132 sq. ft
Counted as living area: Yes

Heated: Yes
Finished: Yes
Enclosed: Yes
Contiguous: Yes
Permitted: Yes
Wet space: No
Addition: No
Conversion: No

19 Floor 3 - Hall



Dimensions: 8'7" x 9'11"
Area: 85 sq. ft
Counted as living area: Yes

Heated: Yes
Finished: Yes
Enclosed: Yes
Contiguous: Yes
Permitted: Yes
Wet space: No
Addition: No
Conversion: No

20 Floor 3 - Bath



Dimensions: 5'3" x 10'8"
Area: 55 sq. ft
Counted as living area: Yes

Heated: Yes
Finished: Yes
Enclosed: Yes
Contiguous: Yes
Permitted: Yes
Wet space: Yes
Addition: No
Conversion: No