

## Home data report

# 1601 Lexington Drive, Lynchburg, Virginia 24503, United States



**Total Area: 3414 sq. ft**

Basement: 0 sq. ft, 1st Floor: 2136 sq. ft, 2nd Floor: 1278 sq. ft

Excluded: Room 365 sq. ft, Hall 141 sq. ft, Storage 262 sq. ft, Utility 186 sq. ft, Sunroom 302 sq. ft, Porch 122 sq. ft, Patio 679 sq. ft, Low ceiling 291 sq. ft, Attic 294 sq. ft, Open to below 42 sq. ft, Walls: 305 sq. ft

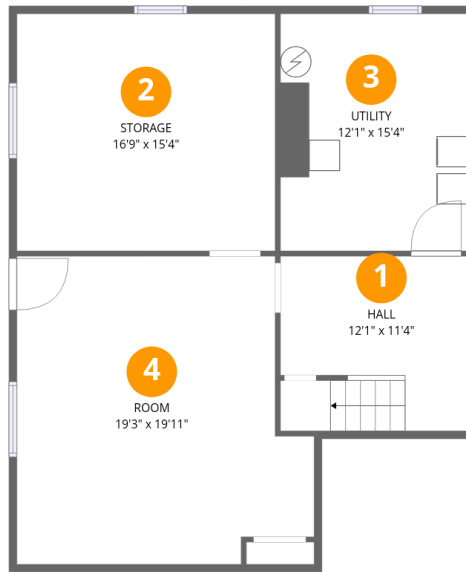
## Property summary

 **3** Floors

 **5** Bedrooms

 **3** Bathrooms

 **1** Half baths



## Room dimensions

Floor 1 Below grade

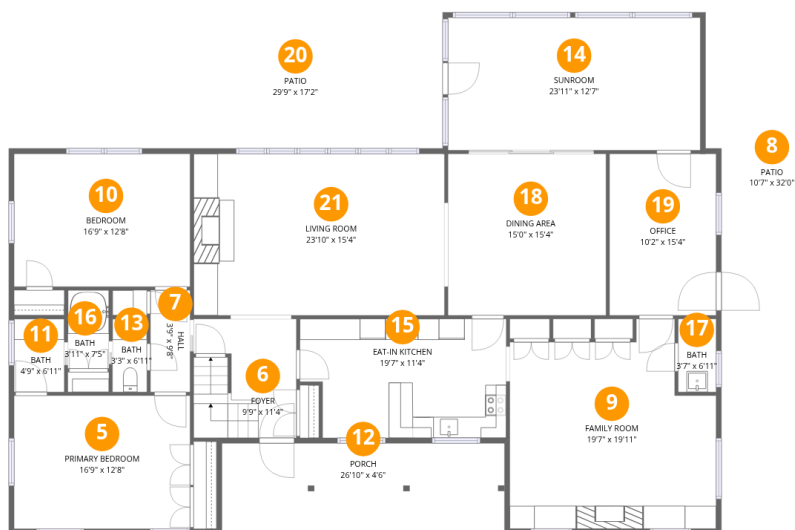
Total:0sqft

Excluded: 954sqft

#		Dimensions	sqft	Counted as living area
1	Hall	12'1" x 11'4"	137 sq. ft	No
2	Storage	16'9" x 15'4"	257 sq. ft	No
3	Utility	12'1" x 15'4"	185 sq. ft	No
4	Room	19'3" x 19'11"	384 sq. ft	No

# Home data report

## 1601 Lexington Drive, Lynchburg, Virginia 24503, United States



### Room dimensions

Floor 2

Total:2136sqft

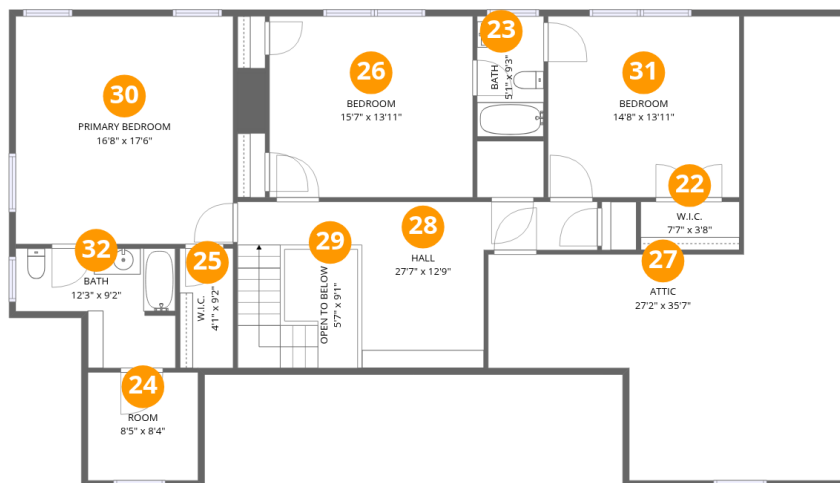
Excluded: 1103sqft

#		Dimensions	sqft	Counted as living area
5	Primary Bedroom	16'9" x 12'8"	212 sq. ft	Yes
6	Foyer	9'9" x 11'4"	111 sq. ft	Yes
7	Hall	3'9" x 9'8"	36 sq. ft	Yes
8	Patio	10'7" x 32'0"	340 sq. ft	No
9	Family Room	19'7" x 19'11"	391 sq. ft	Yes
10	Bedroom	16'9" x 12'8"	211 sq. ft	Yes
11	Bath	4'9" x 6'11"	33 sq. ft	Yes
12	Porch	26'10" x 4'6"	121 sq. ft	No
13	Bath	3'3" x 6'11"	23 sq. ft	Yes
14	Sunroom	23'11" x 12'7"	301 sq. ft	No
15	Eat-in Kitchen	19'7" x 11'4"	222 sq. ft	Yes

Home data report

**1601 Lexington Drive, Lynchburg, Virginia 24503, United States**

#		Dimensions	sqft	Counted as living area
16	Bath	3'11" x 7'5"	29 sq. ft	Yes
17	Bath	3'7" x 6'11"	25 sq. ft	Yes
18	Dining Area	15'0" x 15'4"	231 sq. ft	Yes
19	Office	10'2" x 15'4"	155 sq. ft	Yes
20	Patio	29'9" x 17'2"	510 sq. ft	No
21	Living Room	23'10" x 15'4"	365 sq. ft	Yes



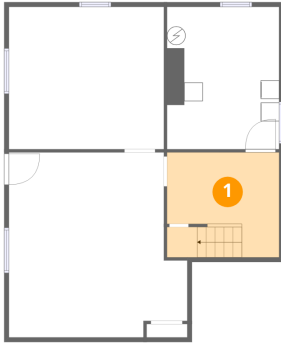
## Room dimensions

Floor 3

Total:1278sqft Excluded: 627sqft

#		Dimensions	sqft	Counted as living area
22	W.I.C.	7'7" x 3'8"	28 sq. ft	Yes
23	Bath	5'1" x 9'3"	47 sq. ft	Yes
24	Room	8'5" x 8'4"	70 sq. ft	Yes
25	W.I.C.	4'1" x 9'2"	38 sq. ft	Yes
26	Bedroom	15'7" x 13'11"	217 sq. ft	Yes
27	Attic	27'2" x 35'7"	968 sq. ft	No
28	Hall	27'7" x 12'9"	352 sq. ft	Yes
29	Open To Below	5'7" x 9'1"	51 sq. ft	No
30	Primary Bedroom	16'8" x 17'6"	292 sq. ft	Yes
31	Bedroom	14'8" x 13'11"	204 sq. ft	Yes
32	Bath	12'3" x 9'2"	113 sq. ft	Yes

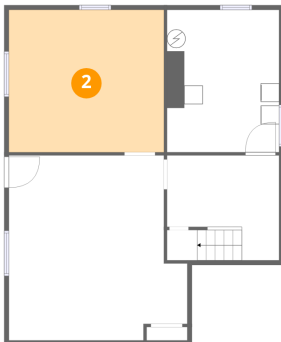
## 1 Floor 1 - Hall



Dimensions: 12'1" x 11'4"  
Area: 137 sq. ft  
Counted as living area: No

Heated: Yes  
Finished: No  
Enclosed: Yes  
Contiguous: Yes  
Permitted: Yes  
Wet space: No  
Addition: No  
Conversion: No

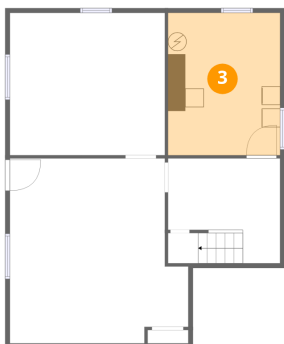
## 2 Floor 1 - Storage



Dimensions: 16'9" x 15'4"  
Area: 257 sq. ft  
Counted as living area: No

Heated: No  
Finished: No  
Enclosed: No  
Contiguous: Yes  
Permitted: Yes  
Wet space: No  
Addition: No  
Conversion: No

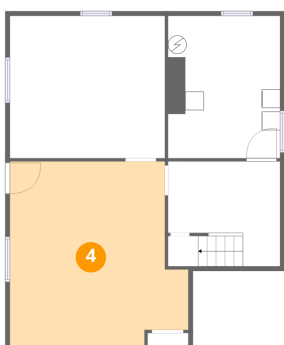
### 3 Floor 1 - Utility



Dimensions: 12'1" x 15'4"  
Area: 185 sq. ft  
Counted as living area: No

Heated: Yes  
Finished: No  
Enclosed: Yes  
Contiguous: Yes  
Permitted: Yes  
Wet space: No  
Addition: No  
Conversion: No

### 4 Floor 1 - Room



Dimensions: 19'3" x 19'11"  
Area: 384 sq. ft  
Counted as living area: No

Heated: Yes  
Finished: No  
Enclosed: Yes  
Contiguous: Yes  
Permitted: Yes  
Wet space: No  
Addition: No  
Conversion: No

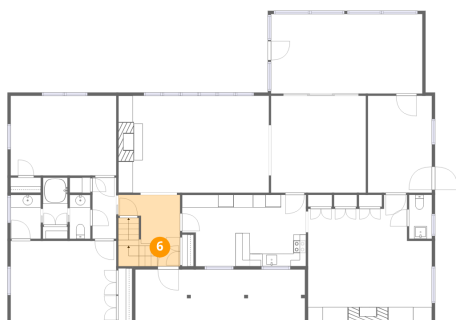
### 5 Floor 2 - Primary Bedroom



Dimensions: 16'9" x 12'8"  
Area: 212 sq. ft  
Counted as living area: Yes

Heated: Yes  
Finished: Yes  
Enclosed: Yes  
Contiguous: Yes  
Permitted: Yes  
Wet space: No  
Addition: No  
Conversion: No

## 6 Floor 2 - Foyer



Dimensions: 9'9" x 11'4"  
Area: 111 sq. ft  
Counted as living area: Yes

Heated: Yes  
Finished: Yes  
Enclosed: Yes  
Contiguous: Yes  
Permitted: Yes  
Wet space: No  
Addition: No  
Conversion: No

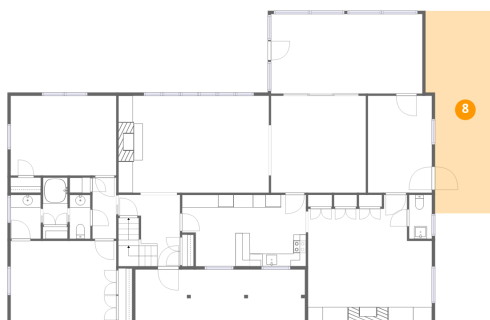
## 7 Floor 2 - Hall



Dimensions: 3'9" x 9'8"  
Area: 36 sq. ft  
Counted as living area: Yes

Heated: Yes  
Finished: Yes  
Enclosed: Yes  
Contiguous: Yes  
Permitted: Yes  
Wet space: No  
Addition: No  
Conversion: No

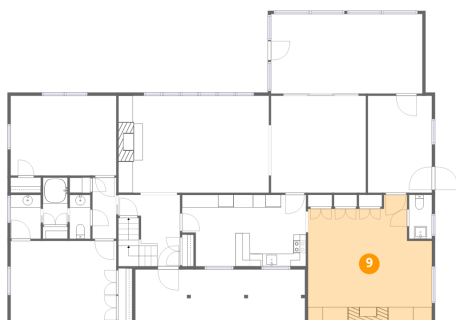
## 8 Floor 2 - Patio



Dimensions: 10'7" x 32'0"  
Area: 340 sq. ft  
Counted as living area: No

Heated: No  
Finished: No  
Enclosed: No  
Contiguous: Yes  
Permitted: Yes  
Wet space: No  
Addition: No  
Conversion: No

## 9 Floor 2 - Family Room



Dimensions: 19'7" x 19'11"  
Area: 391 sq. ft  
Counted as living area: Yes

Heated: Yes  
Finished: Yes  
Enclosed: Yes  
Contiguous: Yes  
Permitted: Yes  
Wet space: No  
Addition: No  
Conversion: No

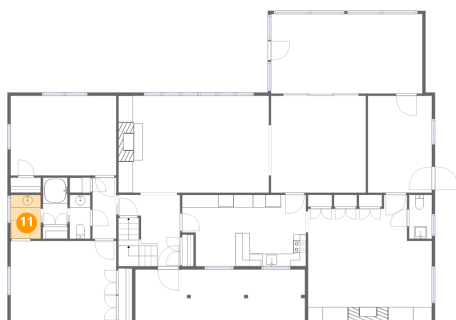
## 10 Floor 2 - Bedroom



Dimensions: 16'9" x 12'8"  
Area: 211 sq. ft  
Counted as living area: Yes

Heated: Yes  
Finished: Yes  
Enclosed: Yes  
Contiguous: Yes  
Permitted: Yes  
Wet space: No  
Addition: No  
Conversion: No

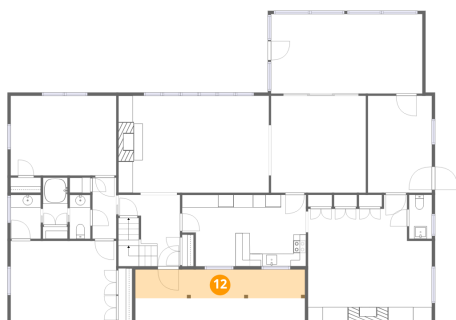
## 11 Floor 2 - Bath



Dimensions: 4'9" x 6'11"  
Area: 33 sq. ft  
Counted as living area: Yes

Heated: Yes  
Finished: Yes  
Enclosed: Yes  
Contiguous: Yes  
Permitted: Yes  
Wet space: Yes  
Addition: No  
Conversion: No

## 12 Floor 2 - Porch



Dimensions: 26'10" x 4'6"  
Area: 121 sq. ft  
Counted as living area: No

Heated: No  
Finished: No  
Enclosed: No  
Contiguous: Yes  
Permitted: Yes  
Wet space: No  
Addition: No  
Conversion: No

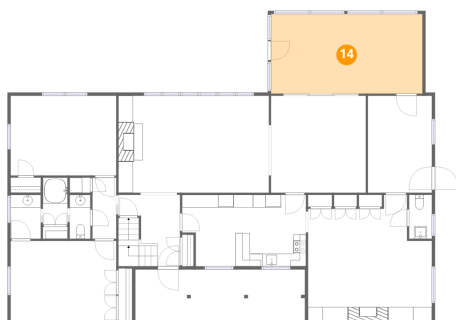
## 13 Floor 2 - Bath



Dimensions: 3'3" x 6'11"  
Area: 23 sq. ft  
Counted as living area: Yes

Heated: Yes  
Finished: Yes  
Enclosed: Yes  
Contiguous: Yes  
Permitted: Yes  
Wet space: No  
Addition: No  
Conversion: No

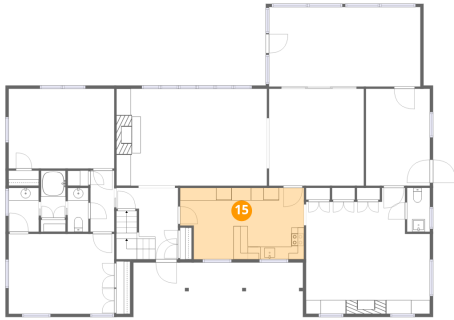
## 14 Floor 2 - Sunroom



Dimensions: 23'11" x 12'7"  
Area: 301 sq. ft  
Counted as living area: No

Heated: No  
Finished: No  
Enclosed: No  
Contiguous: Yes  
Permitted: Yes  
Wet space: No  
Addition: No  
Conversion: No

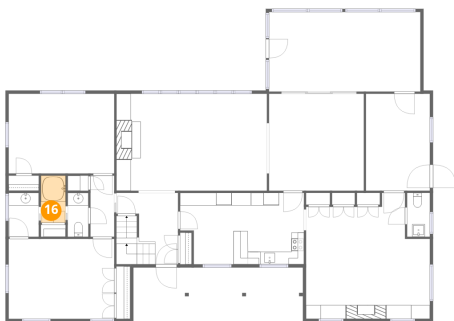
**15** Floor 2 - Eat-in Kitchen



Dimensions: 19'7" x 11'4"  
Area: 222 sq. ft  
Counted as living area: Yes

Heated: Yes  
Finished: Yes  
Enclosed: Yes  
Contiguous: Yes  
Permitted: Yes  
Wet space: No  
Addition: No  
Conversion: No

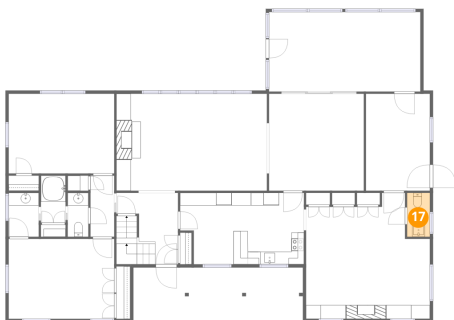
**16** Floor 2 - Bath



Dimensions: 3'11" x 7'5"  
Area: 29 sq. ft  
Counted as living area: Yes

Heated: Yes  
Finished: Yes  
Enclosed: Yes  
Contiguous: Yes  
Permitted: Yes  
Wet space: Yes  
Addition: No  
Conversion: No

**17** Floor 2 - Bath



Dimensions: 3'7" x 6'11"  
Area: 25 sq. ft  
Counted as living area: Yes

Heated: Yes  
Finished: Yes  
Enclosed: Yes  
Contiguous: Yes  
Permitted: Yes  
Wet space: Yes  
Addition: No  
Conversion: No

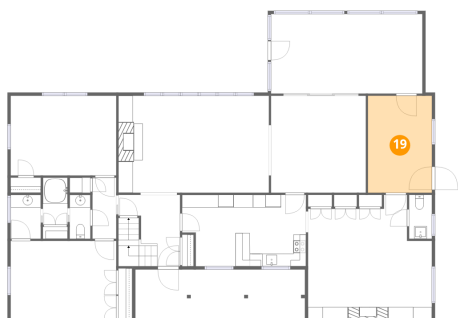
### 18 Floor 2 - Dining Area



Dimensions: 15'0" x 15'4"  
Area: 231 sq. ft  
Counted as living area: Yes

Heated: Yes  
Finished: Yes  
Enclosed: Yes  
Contiguous: Yes  
Permitted: Yes  
Wet space: No  
Addition: No  
Conversion: No

### 19 Floor 2 - Office



Dimensions: 10'2" x 15'4"  
Area: 155 sq. ft  
Counted as living area: Yes

Heated: Yes  
Finished: Yes  
Enclosed: Yes  
Contiguous: Yes  
Permitted: Yes  
Wet space: No  
Addition: No  
Conversion: No

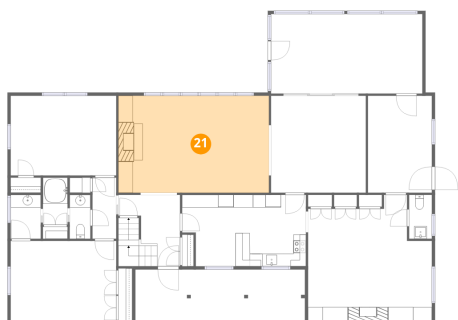
### 20 Floor 2 - Patio



Dimensions: 29'9" x 17'2"  
Area: 510 sq. ft  
Counted as living area: No

Heated: No  
Finished: No  
Enclosed: No  
Contiguous: Yes  
Permitted: Yes  
Wet space: No  
Addition: No  
Conversion: No

## 21 Floor 2 - Living Room



Dimensions: 23'10" x 15'4"  
Area: 365 sq. ft  
Counted as living area: Yes

Heated: Yes  
Finished: Yes  
Enclosed: Yes  
Contiguous: Yes  
Permitted: Yes  
Wet space: No  
Addition: No  
Conversion: No

## 22 Floor 3 - W.I.C.



Dimensions: 7'7" x 3'8"  
Area: 28 sq. ft  
Counted as living area: Yes

Heated: Yes  
Finished: Yes  
Enclosed: Yes  
Contiguous: Yes  
Permitted: Yes  
Wet space: No  
Addition: No  
Conversion: No

## 23 Floor 3 - Bath



Dimensions: 5'1" x 9'3"  
Area: 47 sq. ft  
Counted as living area: Yes

Heated: Yes  
Finished: Yes  
Enclosed: Yes  
Contiguous: Yes  
Permitted: Yes  
Wet space: Yes  
Addition: No  
Conversion: No

### 24 Floor 3 - Room



Dimensions: 8'5" x 8'4"  
Area: 70 sq. ft  
Counted as living area: Yes

Heated: Yes  
Finished: Yes  
Enclosed: Yes  
Contiguous: Yes  
Permitted: Yes  
Wet space: No  
Addition: No  
Conversion: No

### 25 Floor 3 - W.I.C.



Dimensions: 4'1" x 9'2"  
Area: 38 sq. ft  
Counted as living area: Yes

Heated: Yes  
Finished: Yes  
Enclosed: Yes  
Contiguous: Yes  
Permitted: Yes  
Wet space: No  
Addition: No  
Conversion: No

### 26 Floor 3 - Bedroom



Dimensions: 15'7" x 13'11"  
Area: 217 sq. ft  
Counted as living area: Yes

Heated: Yes  
Finished: Yes  
Enclosed: Yes  
Contiguous: Yes  
Permitted: Yes  
Wet space: No  
Addition: No  
Conversion: No

### 27 Floor 3 - Attic



Dimensions: 27'2" x 35'7"  
Area: 968 sq. ft  
Counted as living area: No

Heated: No  
Finished: No  
Enclosed: Yes  
Contiguous: Yes  
Permitted: Yes  
Wet space: No  
Addition: No  
Conversion: No

### 28 Floor 3 - Hall



Dimensions: 27'7" x 12'9"  
Area: 352 sq. ft  
Counted as living area: Yes

Heated: Yes  
Finished: Yes  
Enclosed: Yes  
Contiguous: Yes  
Permitted: Yes  
Wet space: No  
Addition: No  
Conversion: No

### 29 Floor 3 - Open To Below



Dimensions: 5'7" x 9'1"  
Area: 51 sq. ft  
Counted as living area: No

Heated: No  
Finished: No  
Enclosed: No  
Contiguous: Yes  
Permitted: No  
Wet space: No  
Addition: No  
Conversion: No

### 30 Floor 3 - Primary Bedroom



Dimensions: 16'8" x 17'6"  
Area: 292 sq. ft  
Counted as living area: Yes

Heated: Yes  
Finished: Yes  
Enclosed: Yes  
Contiguous: Yes  
Permitted: Yes  
Wet space: No  
Addition: No  
Conversion: No

### 31 Floor 3 - Bedroom



Dimensions: 14'8" x 13'11"  
Area: 204 sq. ft  
Counted as living area: Yes

Heated: Yes  
Finished: Yes  
Enclosed: Yes  
Contiguous: Yes  
Permitted: Yes  
Wet space: No  
Addition: No  
Conversion: No

### 32 Floor 3 - Bath



Dimensions: 12'3" x 9'2"  
Area: 113 sq. ft  
Counted as living area: Yes

Heated: Yes  
Finished: Yes  
Enclosed: Yes  
Contiguous: Yes  
Permitted: Yes  
Wet space: Yes  
Addition: No  
Conversion: No